

BRADLEY HILLS GROVE (120060090)

Attachment 1



Map compiled on October 20, 2005 at 4:37 PM | Site located on base sheet no - 210NW07

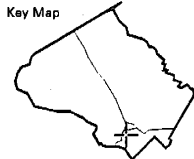
NOTICE

The planimetric, property, and topographic information shown on this map is based on copyrighted Map Products from the Montgomery County Department of Park and Planning of the Maryland-National Capital Park and Planning Commission, and may not be copied or reproduced without written permission from M-NCPPC.

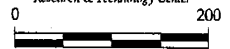
Property lines are compiled by adjusting the property lines to topography created from aerial photography and should not be interpreted as actual field surveys. Planimetric features were compiled from 1:14400 scale aerial photography using stereo photogrammetric methods.

This map is created from a variety of data sources, and may not reflect the most current conditions in any one location and may not be completely accurate or up to date. All map features are approximately within five feet of their true location. This map may not be the same as a map of the same area plotted at an earlier time as the data is continuously updated. Use of this map, other than for general planning purposes is not recommended. - Copyright 1998

Key Map

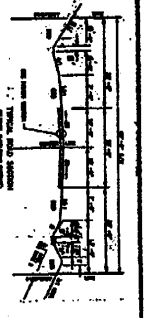
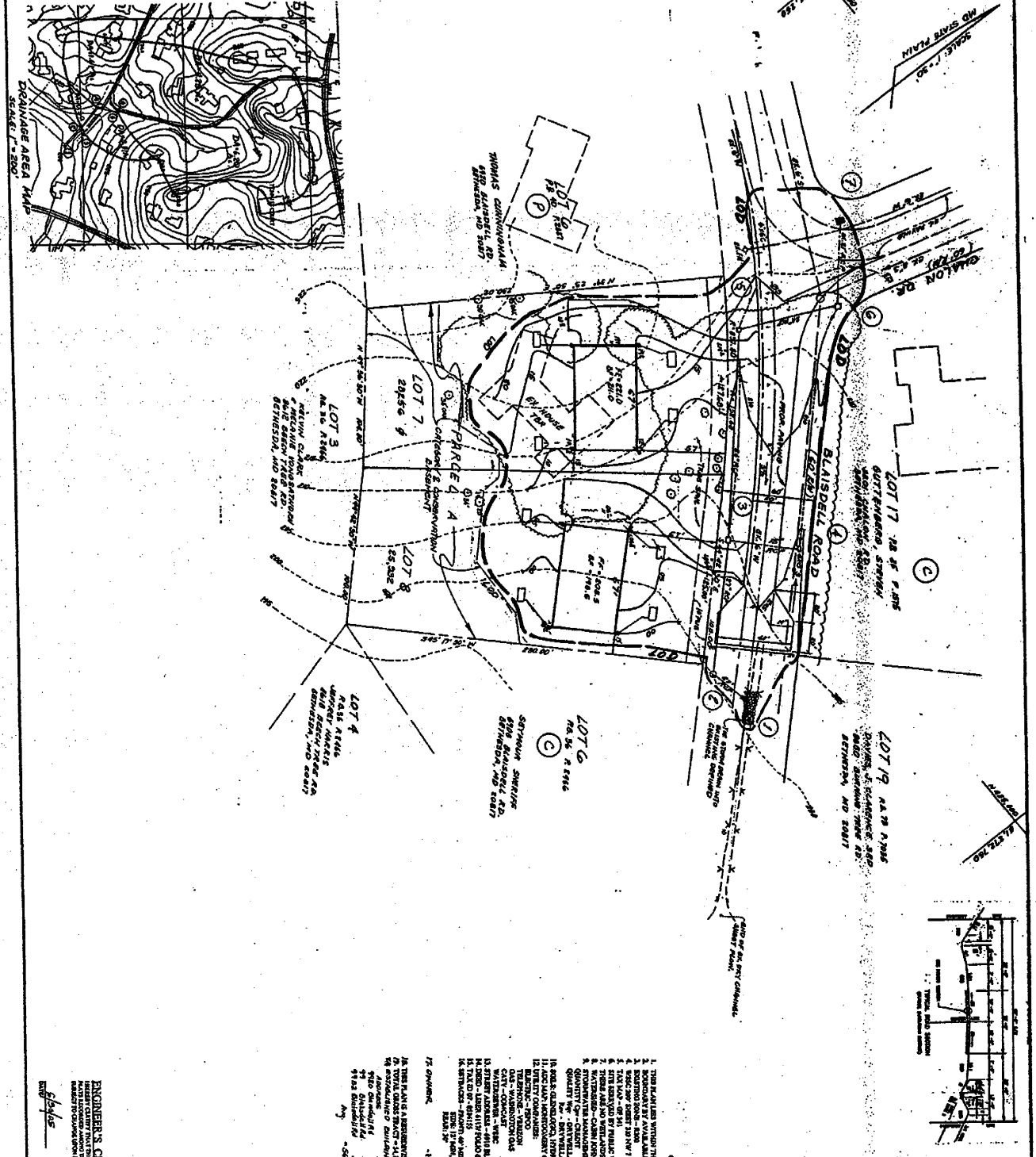


Research & Technology Center



1 inch = 200 feet
1 : 2400

Attachment 2



GENERAL NOTES

1. THIS PLAN IS WITHIN THE BRITISH MASTERS PLAN
2. BOUNDARIES BY ADJACENT LOTS AND PLATS
3. 1/4" = 100' SCALE
4. 1/4" = 100' SCALE
5. 1/4" = 100' SCALE
6. 1/4" = 100' SCALE
7. 1/4" = 100' SCALE
8. 1/4" = 100' SCALE
9. 1/4" = 100' SCALE
10. 1/4" = 100' SCALE
11. 1/4" = 100' SCALE
12. 1/4" = 100' SCALE
13. 1/4" = 100' SCALE
14. 1/4" = 100' SCALE
15. 1/4" = 100' SCALE
16. 1/4" = 100' SCALE
17. 1/4" = 100' SCALE
18. 1/4" = 100' SCALE
19. 1/4" = 100' SCALE
20. 1/4" = 100' SCALE
21. 1/4" = 100' SCALE
22. 1/4" = 100' SCALE
23. 1/4" = 100' SCALE
24. 1/4" = 100' SCALE
25. 1/4" = 100' SCALE
26. 1/4" = 100' SCALE
27. 1/4" = 100' SCALE
28. 1/4" = 100' SCALE
29. 1/4" = 100' SCALE
30. 1/4" = 100' SCALE
31. 1/4" = 100' SCALE
32. 1/4" = 100' SCALE
33. 1/4" = 100' SCALE
34. 1/4" = 100' SCALE
35. 1/4" = 100' SCALE
36. 1/4" = 100' SCALE
37. 1/4" = 100' SCALE
38. 1/4" = 100' SCALE
39. 1/4" = 100' SCALE
40. 1/4" = 100' SCALE
41. 1/4" = 100' SCALE
42. 1/4" = 100' SCALE
43. 1/4" = 100' SCALE
44. 1/4" = 100' SCALE
45. 1/4" = 100' SCALE
46. 1/4" = 100' SCALE
47. 1/4" = 100' SCALE
48. 1/4" = 100' SCALE
49. 1/4" = 100' SCALE
50. 1/4" = 100' SCALE
51. 1/4" = 100' SCALE
52. 1/4" = 100' SCALE
53. 1/4" = 100' SCALE
54. 1/4" = 100' SCALE
55. 1/4" = 100' SCALE
56. 1/4" = 100' SCALE
57. 1/4" = 100' SCALE
58. 1/4" = 100' SCALE
59. 1/4" = 100' SCALE
60. 1/4" = 100' SCALE
61. 1/4" = 100' SCALE
62. 1/4" = 100' SCALE
63. 1/4" = 100' SCALE
64. 1/4" = 100' SCALE
65. 1/4" = 100' SCALE
66. 1/4" = 100' SCALE
67. 1/4" = 100' SCALE
68. 1/4" = 100' SCALE
69. 1/4" = 100' SCALE
70. 1/4" = 100' SCALE
71. 1/4" = 100' SCALE
72. 1/4" = 100' SCALE
73. 1/4" = 100' SCALE
74. 1/4" = 100' SCALE
75. 1/4" = 100' SCALE
76. 1/4" = 100' SCALE
77. 1/4" = 100' SCALE
78. 1/4" = 100' SCALE
79. 1/4" = 100' SCALE
80. 1/4" = 100' SCALE
81. 1/4" = 100' SCALE
82. 1/4" = 100' SCALE
83. 1/4" = 100' SCALE
84. 1/4" = 100' SCALE
85. 1/4" = 100' SCALE
86. 1/4" = 100' SCALE
87. 1/4" = 100' SCALE
88. 1/4" = 100' SCALE
89. 1/4" = 100' SCALE
90. 1/4" = 100' SCALE
91. 1/4" = 100' SCALE
92. 1/4" = 100' SCALE
93. 1/4" = 100' SCALE
94. 1/4" = 100' SCALE
95. 1/4" = 100' SCALE
96. 1/4" = 100' SCALE
97. 1/4" = 100' SCALE
98. 1/4" = 100' SCALE
99. 1/4" = 100' SCALE
100. 1/4" = 100' SCALE

ENGINEER'S CERTIFICATE

I, the undersigned, being a duly Licensed Professional Engineer in the State of Maryland, do hereby certify that the above is a true and correct copy of the original plan as shown to me by the applicant and that the same conforms to the requirements of the laws of the State of Maryland relating to the subdivision of land.

Witness my hand and seal this 1st day of May, 1965.

John P. ...

PRELIMINARY PLAN
BRADLEY HILLS GROVE
 LOTS 3 + 8, BLOCK P
 RESUBDIVISION OF PARTS OF A, BLOCK P
 BETHESDA ELECTION DISTRICT NO. 7
 MONTGOMERY COUNTY, MARYLAND

P.G. ASSOCIATES, INC.
 CIVIL ENGINEERS * SURVEYORS * LAND PLANNERS
 932 HUNGERFORD DRIVE, SUITE 48
 ROCKVILLE, MARYLAND 20850
 PHONE (301) 309-1361

DATE	REVISIONS	BY	DATE

Bradley Hills Grove Resubdivision Table

LOT	BLOCK	FRONTAGE	ALIGNMENT	SHAPE	WIDTH @ BRL	SIZE (sq.ft.)	LOT AREA (sq.ft.)
4	C	151'	PERPENDICULAR TO STREET	IRREGULAR	151'	22,474	9,208
5	C	189'	PERPENDICULAR TO STREET	IRREGULAR	189'	27,368	7,450
6	C	125'	PERPENDICULAR TO STREET	IRREGULAR	125'	22,038	9,343
6	N	176'	PERPENDICULAR TO STREET	RECTANGULAR	176'	27,034	7,296
7	N	145'	PERPENDICULAR TO STREET	IRREGULAR	145'	25,334	11,340
8	N	130'	PERPENDICULAR TO STREET	RECTANGULAR	130'	29,250	16,430
9	N	255'	PERPENDICULAR TO STREET	IRREGULAR	76'	30,634	13,105
19	C	481'	PERPENDICULAR TO STREET	IRREGULAR	139'	40,007	17,236
3	P	183'	PERPENDICULAR TO STREET	IRREGULAR	176'	31,153	13,200
4	P	135'	PERPENDICULAR TO STREET	RECTANGULAR	135'	25,887	13,764
5	P	125'	PERPENDICULAR TO STREET	RECTANGULAR	123'	24,490	12,928
6	P	135'	PERPENDICULAR TO STREET	RECTANGULAR	153'	27,747	17,760
7	P	128'	PERPENDICULAR TO STREET	RECTANGULAR	125'	28,256	16,940
8	P	125'	PERPENDICULAR TO STREET	RECTANGULAR	123'	25,932	11,980

Proposed Lots