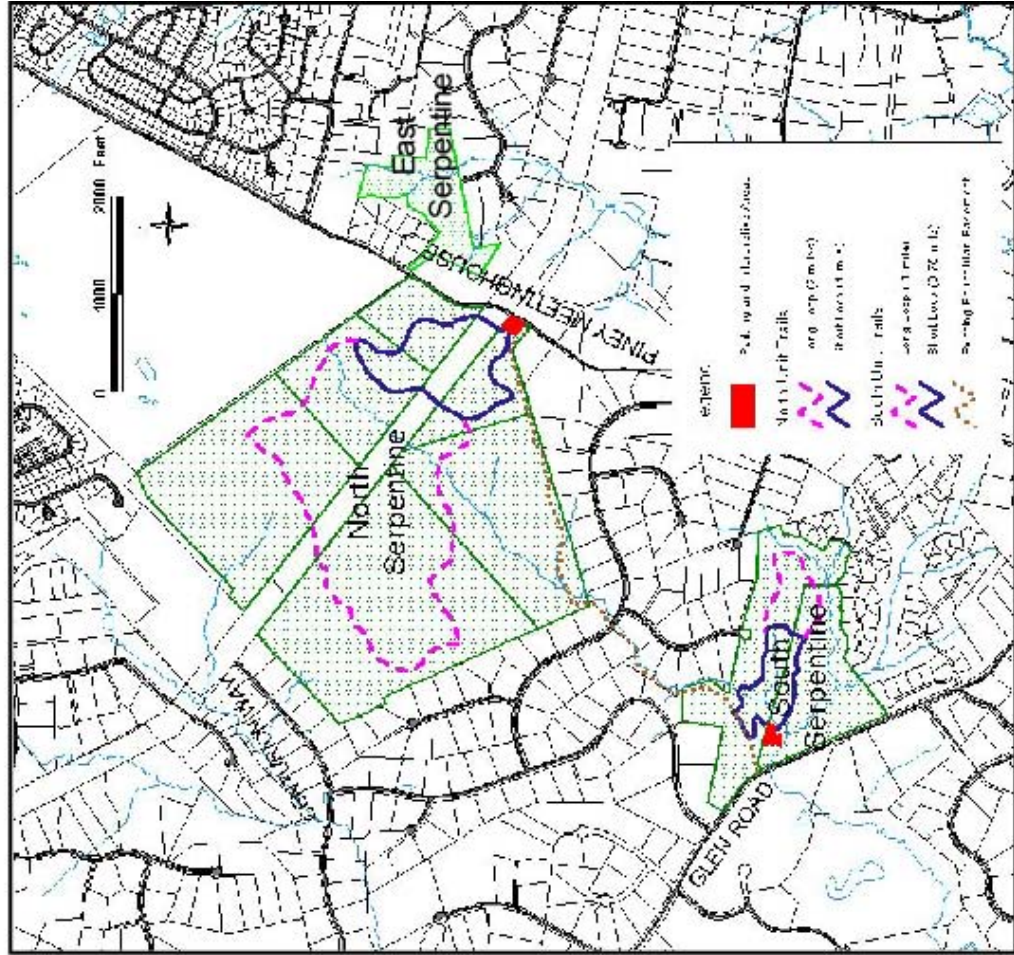


Attachment V Management Plan Alternatives

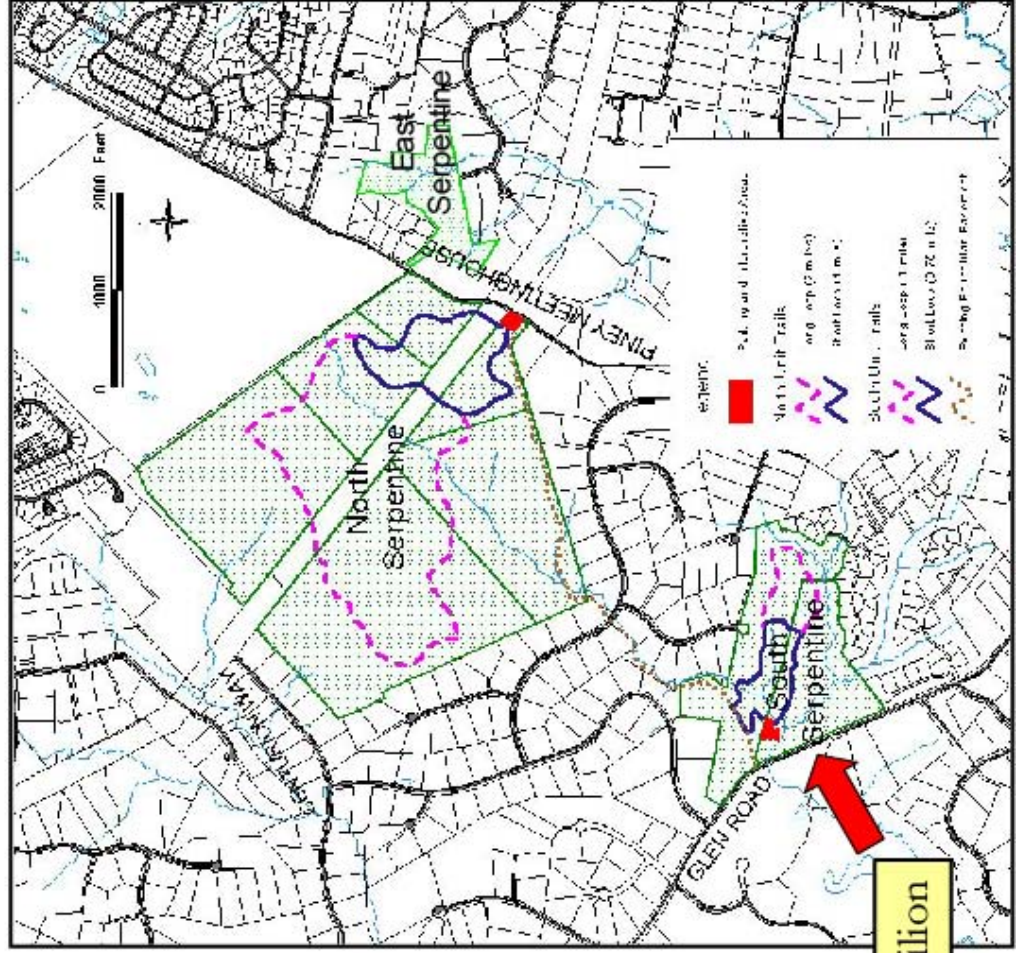
Alternative A – Conservation Emphasis, Limited Development

- Loop trails hiker only
- Equestrian use limited to existing easements
- Interpretive signage
- Naturalist tours in South Serpentine
- North Serpentine generally limited to self-guided walks
- Minimal infrastructure for parking and trailheads



Alternative B – Conservation in North, Interpretation in South

- Loop trails hiker only
- Equestrian use limited to existing easements
- Interpretive pavilion, parking, signage, and naturalist tours in South Serpentine, to take advantage of compactness and variety of South Serpentine, and introduction to explore North Serpentine
- Limited infrastructure in North Serpentine to protect more pristine ecosystem



Interpretive Pavilion

Alternative C – Interpretation in North, Recreation in South

- Loop trails in South Serpentine Multi-Use
- Interpretive pavilion, parking, signage, and naturalist tours focused on North Serpentine, to explore higher quality example of ecosystem and avoid user conflicts in South Serpentine.
- Parking and trailhead infrastructure in South Serpentine

