

# NORMANDY FARMS - SURROUNDING AREA USES



Map created on January 20, 2004 at 9:09 AM | Site based on last sheet of - 2330970

**NOTICE**

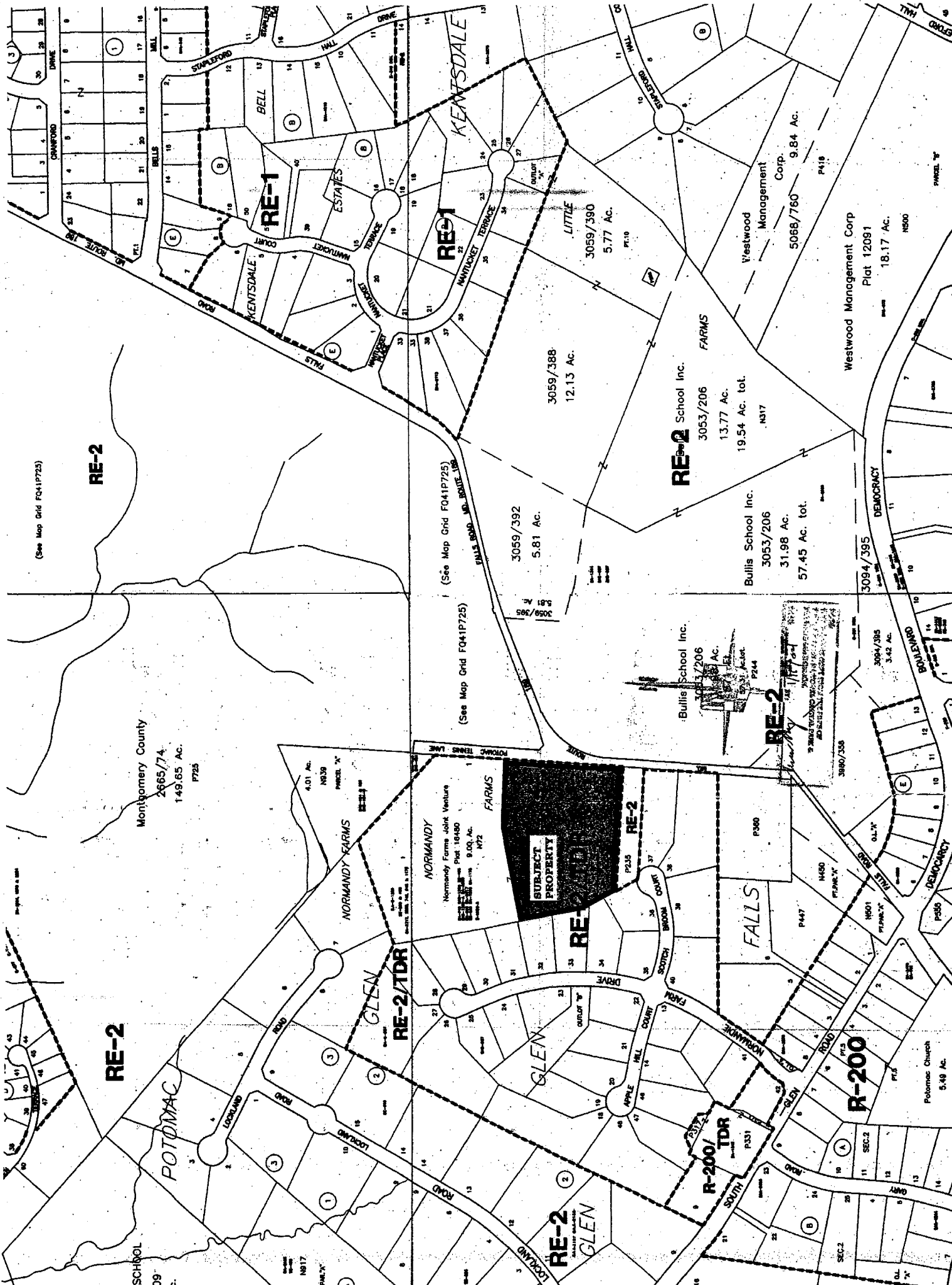
This map is a preliminary and illustrative representation of the proposed project. It is not intended to be used for any other purpose. The user of this map is advised that the information shown on this map is based on the best available information and is not a guarantee of accuracy. The user of this map is advised that the information shown on this map is not to be used for any other purpose. The user of this map is advised that the information shown on this map is not to be used for any other purpose.


**Key Map**

**North Arrow**

**Scale**

1:10,000



(See Map Grid FQ41P723)

RE-2

Montgomery County  
2665/74  
149.65 AC.  
P725

RE-2

POTOMAC

SCHOOL  
109  
AC.

RE-1

(See Map Grid FQ41P725)

(See Map Grid FQ41P725)

RE-2/TDR

RE-2

NORMANDY FARMS  
Normandy Farms Joint Venture  
Plat 10480  
9.00 AC.  
M72

3059/388  
12.13 AC.

3059/392  
5.81 AC.

3059/395  
5.81 AC.

RE-2

RE-2

RE-2

RE-2

RE-2

Bullis School Inc.  
3053/206  
13.77 AC.  
19.54 AC. tot.  
N317

Bullis School Inc.  
3053/206  
31.98 AC.  
57.45 AC. tot.

FALLS

R-200/TDR

Westwood Management Corp.  
5088/760  
9.84 AC.

Westwood Management Corp  
Plat 12081  
18.17 AC.  
N500

R-200

Polomac Church  
5.48 AC.

SUBJECT PROPERTY

