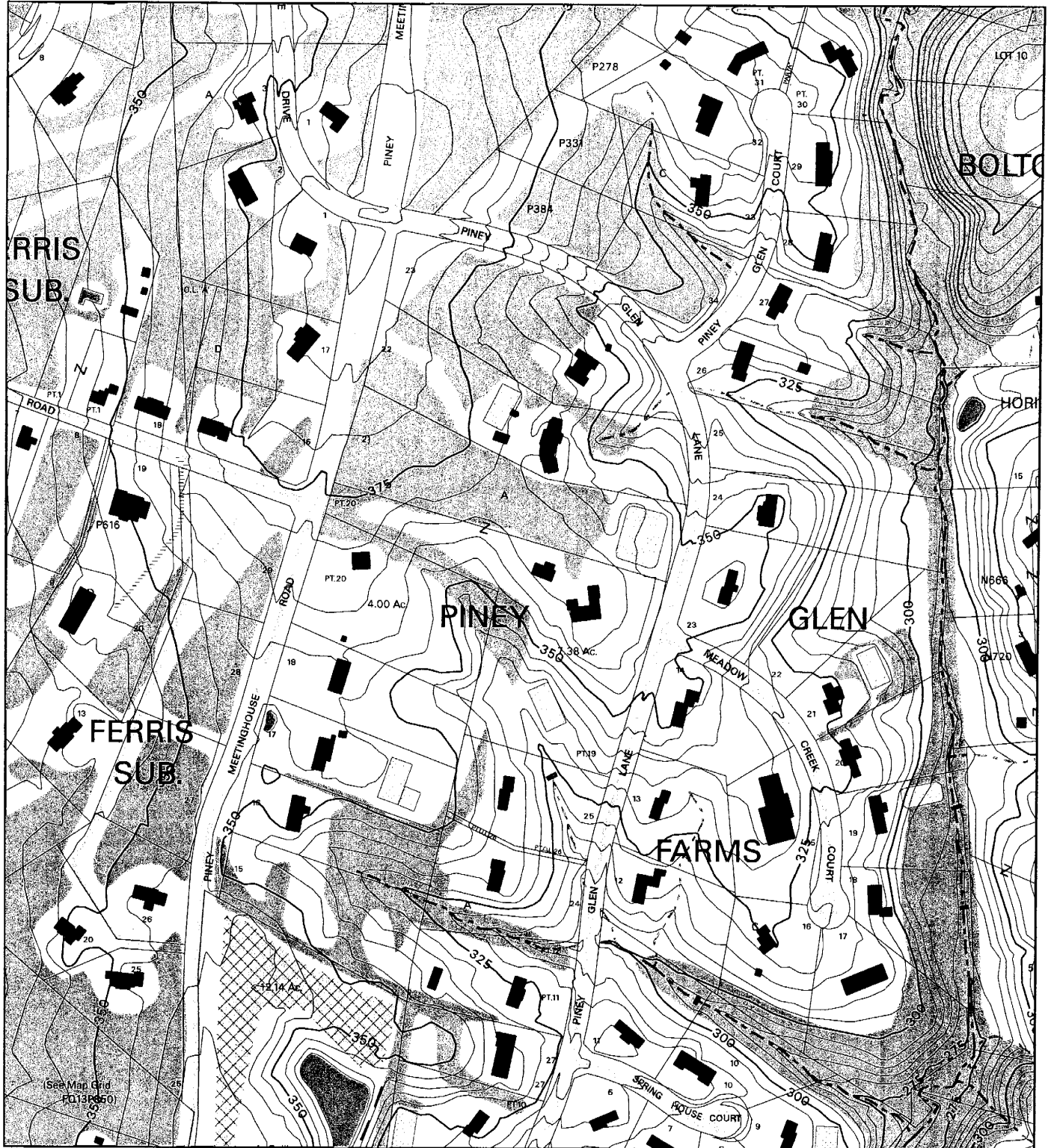


Table 1. Preliminary Plan Data Table and Checklist

Plan Name: Piney Glen Farms				
Plan Number: 120050310 (formerly 1-05031)				
Zoning: RE-2				
# of Lots: 5				
# of Outlots: 0				
Dev. Type: One-family detached residential				
PLAN DATA	Zoning Ordinance Development Standard	Proposed for Approval on the Preliminary Plan	Verified	Date
Minimum Lot Area	87,120 sq.ft.	107,158 sq.ft. is minimum proposed	CAC	2/2/06
Lot Width	150 ft.	Must meet minimum	CAC	2/2/06
Lot Frontage	25 ft.	Must meet minimum	CAC	2/2/06
Setbacks				
Front	50 ft. Min.	Must meet minimum	CAC	2/2/06
Side	17ft. Min./ 35 ft. total	Must meet minimum	CAC	2/2/06
Rear	35 ft. Min.	Must meet minimum	CAC	2/2/06
Height	50 ft. Max.	May not exceed maximum	CAC	2/2/06
Max Resid'l d.u. or Comm'l s.f. per Zoning	6 dwelling units	5 dwelling units	CAC	2/2/06
MPDUs	N/a			
TDRs	N/a			
Site Plan Req'd?	No			
FINDINGS				
SUBDIVISION				
Lot frontage on Public Street	Yes	Yes	CAC	2/2/06
Road dedication and frontage improvements	Dedication along frontage of public roads	Yes	CAC	1/30/05
Environmental Guidelines	Yes	Yes	Staff memo	2/2/06
Forest Conservation	Yes	Yes	Staff memo	2/2/06
Master Plan Compliance	Yes	Yes		2/2/06
Other	Trail Easement	Yes	Staff memo	2/2/06
ADEQUATE PUBLIC FACILITIES				
Stormwater Management	Yes	Yes	Agency Letter	2/28/05
Water and Sewer (WSSC)	Yes	Yes	Agency memo	12/16/05
10-yr Water and Sewer Plan Compliance	Yes	Yes	Agency memo	12/16/05
Well and Septic	Yes	Yes	Agency Letter	9/23/05
Local Area Traffic Review	Not required	N/a		
Fire and Rescue	Yes	Yes	CAC	2/2/06

PINEY GLEN FARMS (1-05031)



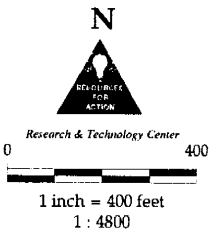
Map compiled on September 29, 2004 at 10:01 AM | Site located on base sheet no - 216NW11

NOTICE

The planimetric, property, and topographic information shown on this map is based on copyrighted Map Products from the Montgomery County Department of Park and Planning of the Maryland-National Capital Park and Planning Commission, and may not be copied or reproduced without written permission from M-NCPPC.

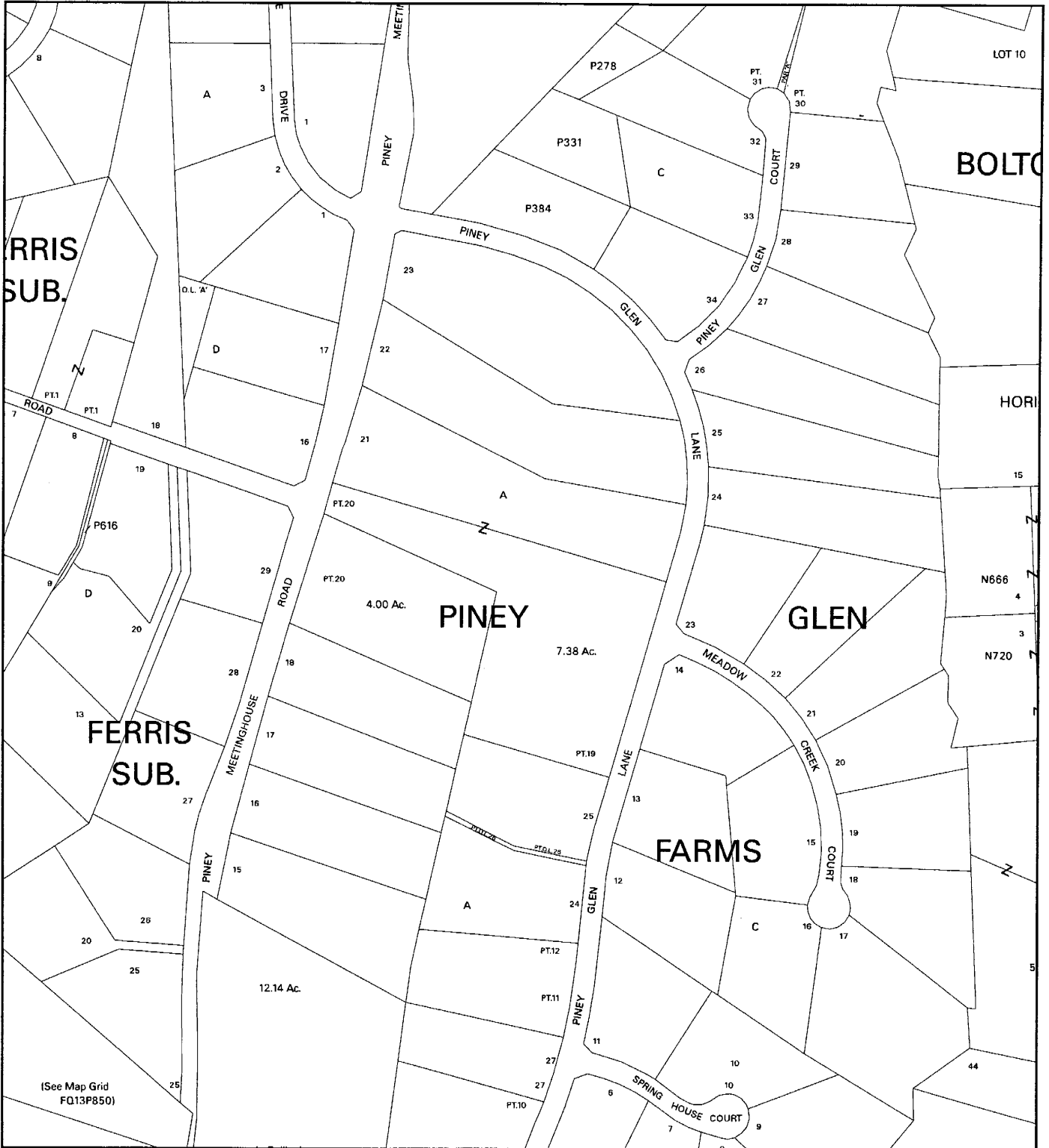
Property lines are compiled by adjusting the property lines to topography created from aerial photography and should not be interpreted as actual field surveys. Planimetric features were compiled from 1:14400 scale aerial photography using stereo photogrammetric methods.

This map is created from a variety of data sources, and may not reflect the most current conditions in any one location and may not be completely accurate or up to date. All map features are approximately within five feet of their true location. This map may not be the same as a map of the same area plotted at an earlier time as the data is continuously updated. Use of this map, other than for general planning purposes is not recommended. - Copyright 1998



①

PINEY GLEN FARMS (1-05031)



Map compiled on September 29, 2004 at 10:26 AM | Site located on base sheet no - 216NW11

NOTICE

The planimetric, property, and topographic information shown on this map is based on copyrighted Map Products from the Montgomery County Department of Park and Planning of the Maryland-National Capital Park and Planning Commission, and may not be copied or reproduced without written permission from M-NCPPC.

Property lines are compiled by adjusting the property lines to topography created from aerial photography and should not be interpreted as actual field surveys. Planimetric features were compiled from 1:14400 scale aerial photography using stereo photogrammetric methods.

This map is created from a variety of data sources, and may not reflect the most current conditions in any one location and may not be completely accurate or up to date. All map features are approximately within five feet of their true location. This map may not be the same as a map of the same area plotted at an earlier time as the data is continuously updated. Use of this map, other than for general planning purposes is not recommended. - Copyright 1998



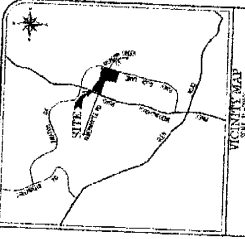
N

Research & Technology Center

1 inch = 400 feet
1 : 4800

2

Attachment B



SITE DATA

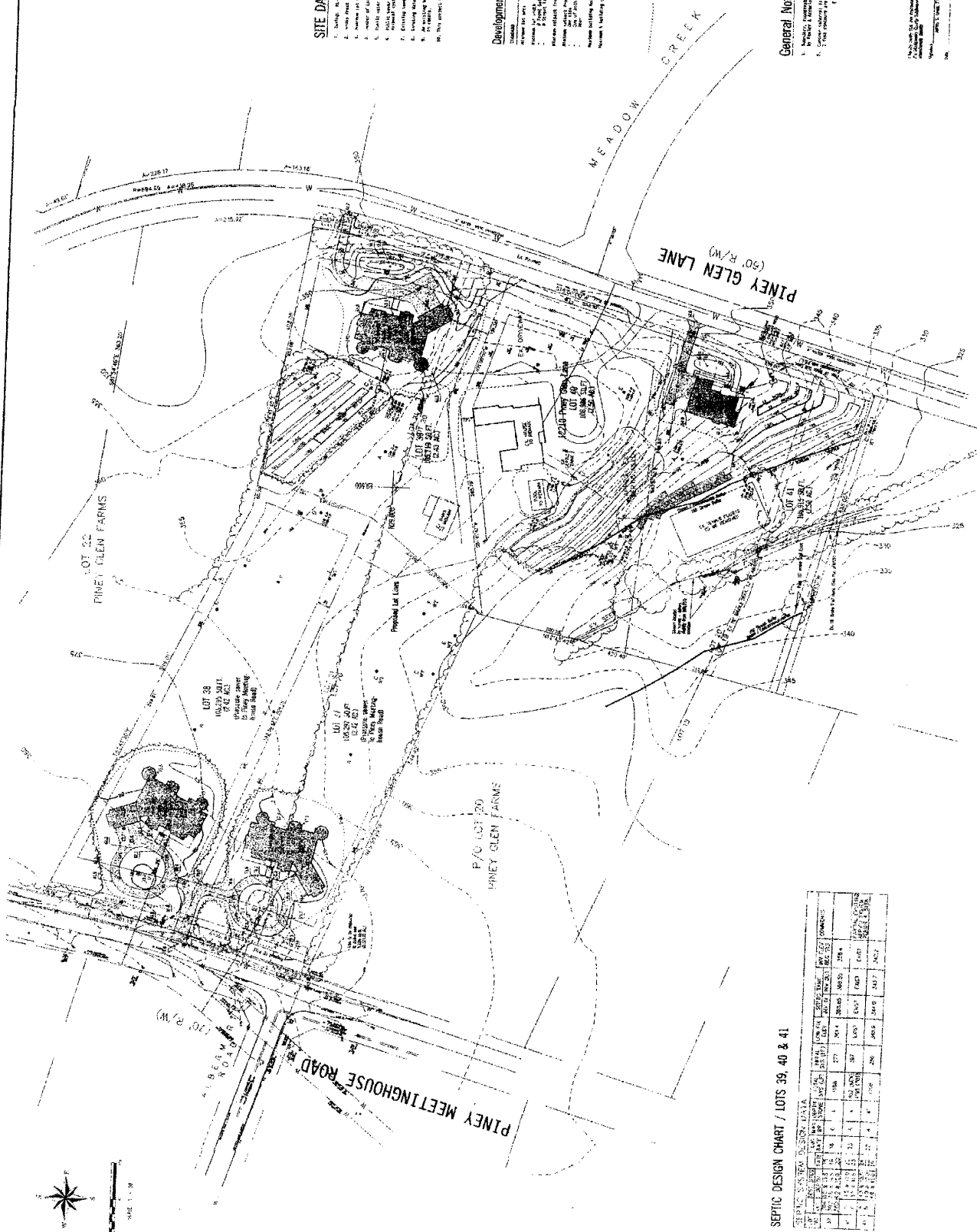
1. Survey No. 2
2. Survey Date: 04/11/2011
3. Surveyed by: [Name]
4. Project Name: [Name]
5. Project Location: [Address]
6. Project Description: [Description]
7. Project Owner: [Name]
8. Project Engineer: [Name]
9. Project Date: [Date]
10. Project Status: [Status]

Development Standards: Per RE-2 Zoning

Standard	Requirement
1. Lot Area	10,000 sq. ft.
2. Lot Width	30 ft.
3. Lot Depth	30 ft.
4. Front Setback	10 ft.
5. Side Setback	5 ft.
6. Rear Setback	5 ft.
7. Height	12 ft.
8. Maximum Building Coverage	20%
9. Maximum Building Height	12 ft.
10. Maximum Building Footprint	2,000 sq. ft.

General Notes

1. All dimensions are in feet and inches.
2. All bearings are in degrees, minutes and seconds.
3. All distances are in feet and inches.
4. All areas are in square feet.
5. All volumes are in cubic feet.
6. All weights are in pounds.
7. All temperatures are in degrees Fahrenheit.
8. All pressures are in pounds per square inch.
9. All speeds are in miles per hour.
10. All times are in hours, minutes and seconds.



SEPTIC DESIGN CHART / LOTS 39, 40 & 41

Lot No.	Area (sq. ft.)	Volume (cu. ft.)	Flow (gpd)	Design (gpd)	Notes
22	10,000	100,000	1,000	1,000	Standard
20	10,000	100,000	1,000	1,000	Standard
39	10,000	100,000	1,000	1,000	Standard
40	10,000	100,000	1,000	1,000	Standard
41	10,000	100,000	1,000	1,000	Standard

SS SITE SOLUTIONS, INC.
 10000 W. 10th Street, Suite 100, Denver, CO 80202
 Phone: (303) 751-1000 | Fax: (303) 751-1001
 Email: info@site-solutions.com | Website: www.site-solutions.com

PROJECT: PINEY GLEN FARMS
 PREPARED BY: [Name]
 DATE: [Date]

CLIENT: PINEY GLEN FARMS
 10000 W. 10th Street, Suite 100, Denver, CO 80202
 Phone: (303) 751-1000 | Fax: (303) 751-1001
 Email: info@site-solutions.com | Website: www.site-solutions.com

SCALE: 1" = 30'

DATE: 04/11/2011

PROJECT NO: 11-001

LOT: 39, 40 & 41

REVISIONS:

No.	Description
1	Initial Issue
2	Revised
3	Final

(3)

**PINEY GLEN FARMS
NEIGHBORHOOD DATA TABLE**

Neighborhood Data Table with Steam Valley Buffers Shown

<u>Subdivision</u>	<u>Lot/Block No.</u>	<u>Frontage</u>	<u>Alignment</u>	<u>Lot Size</u>	<u>Shape</u>	<u>Width at BRL</u>	<u>Buildable Area</u>
Piney Glen Farms	34-C	308' CL	Perpendicular	2.01	Rectangle	290'	1.15
Piney Glen Farms	26-C	140' CL	Perpendicular	2.70	Rectangle	195'	1.58
Piney Glen Farms	25-C	226'	Perpendicular	2.51	Rectangle	220'	1.57
Piney Glen Farms	24-C	153'	Perpendicular	2.78	Rectangle	160'	1.81
Piney Glen Farms	23-C	288' CL	Perpendicular	2.08	Rectangle	320'	1.18
Piney Glen Farms	14-C	252' CL	Perpendicular	2.01	Rectangle	285'	1.06
Piney Glen Farms	13-C	275'	Perpendicular	2.02	Rectangle	280'	1.26
Piney Glen Farms	12-C	210'	Perpendicular	2.13	Rectangle	225'	1.40
Piney Glen Farms	11-C	185' CL	Perpendicular	2.05	Rectangle	230'	1.07
Piney Glen Farms	6-C	191' CL	Perpendicular	2.07	Rectangle	210'	1.02
Piney Glen Farms	5-C	165' CL	Perpendicular	2.04	Rectangle	190'	1.12
Piney Glen Farms	1-B	410' CL	Perpendicular	2.19	Rectangle	460'	1.16
Piney Glen Farms	20-B	233'	Perpendicular	2.00	Rectangle	240'	1.27
Piney Glen Farms	12-B	190'	Perpendicular	2.47	Rectangle	230'	1.49
Piney Glen Farms	7-B	285'	Perpendicular	2.00	Square	300'	1.25
Piney Glen Farms	6-B	252' CL	Perpendicular	2.10	Rectangle	272'	1.18
Piney Glen Farms	1-A	192' CL	Perpendicular	2.06	Rectangle	230'	1.29
Piney Glen Farms	2-A	266'	Perpendicular	2.02	Rectangle	255'	1.32
Piney Glen Farms	3-A	447'	Radial	2.05	Pie	387'	1.17
Piney Glen Farms	4-A	242'	Perpendicular	2.10	Rectangle	230'	1.40
Piney Glen Farms	5-A	248'	Perpendicular	2.00	Rectangle	237'	1.36
Piney Glen Farms	6-A	245'	Perpendicular	2.04	Rectangle	237'	1.35
Piney Glen Farms	7-A	225'	Perpendicular	2.01	Rectangle	224'	1.33
Piney Glen Farms	8-A	212'	Perpendicular	2.03	Rectangle	221'	1.34
Piney Glen Farms	14	202'	Perpendicular	2.04	Rectangle	207'	1.36
Piney Glen Farms	27-A	203'	Perpendicular	2.04	Rectangle	194'	1.36
Piney Glen Farms	24-A	219'	Perpendicular	2.56	Rectangle	224'	1.30
Piney Glen Farms	25-A	222'	Perpendicular	2.20	Rectangle	226'	1.10
SUBJECT PROPERTY	37-A	185'	Perpendicular	2.42	Rectangle	185'	1.67
SUBJECT PROPERTY	38-A	191'	Perpendicular	2.42	Rectangle	185'	1.65
SUBJECT PROPERTY	39-A	277'	Perpendicular	2.43	Rectangle	265'	1.57
SUBJECT PROPERTY	40-A	230'	Perpendicular	2.50	Rectangle	240'	1.76
SUBJECT PROPERTY	41-A	289'	Perpendicular	2.50	Rectangle	280'	1.74
Piney Glen Farms	22-A	236'	Perpendicular	5.00	Rectangle	225'	3.50
Piney Glen Farms	23-A	1035' CL	Perpendicular	5.31	2 Corner Lot	940'	3.00
Piney Glen Farms	18-A	210'	Perpendicular	2.63	Rectangle	210'	1.84
Piney Glen Farms	17-A	207'	Perpendicular	2.63	Rectangle	205'	1.84
Piney Glen Farms	16-A	197'	Perpendicular	2.55	Rectangle	200'	2.18
Piney Glen Farms	15-A	190'	Perpendicular	3.08	Rectangle	205'	1.95
Piney Glen Farms	36-A	180'	Perpendicular	2.55	Rectangle	180'	1.75
Piney Glen Farms	35-A	285'	Perpendicular	3.03	Rectangle	275'	2.17
Piney Glen Farms	34-A	211'	Perpendicular	2.67	Rectangle	215'	1.83
Ferris Subdivision	25	410'	Perpendicular	2.10	Irregular Pie	380'	1.24
Ferris Subdivision	20	25'	Perpendicular	2.20	Pan Handle	150'	1.18
Ferris Subdivision	26	180'	Perpendicular	2.00	Irregular	250'	1.27
Ferris Subdivision	27	346'	Parallel	2.10	Rectangle	350'	1.23
Ferris Subdivision	28	346'	Parallel	2.10	Rectangle	360'	0.90
Ferris Subdivision	29	300' CL	Parallel	2.10	Irregular	330'	0.35
Ferris Subdivision	16	325' CL	Perpendicular	2.00	Rectangle	225'	0.80
Ferris Subdivision	17	234'	Perpendicular	2.00	Rectangle	230'	1.21
Palatine Subdivision	1-A	158' CL	Parallel Corner	2.00	Irregular	184'	1.15
Palatine Subdivision	1-B	507' CL	Parallel Corner	2.00	Irregular	395'	1.00
Palatine Subdivision	2-B	284'	Perpendicular	2.00	Irregular	300'	1.00
Palatine Subdivision	3-B	143'	Perpendicular	2.00	Irregular	154'	1.30
Palatine Subdivision	4-B	120'	Perpendicular	2.00	Irregular	130'	1.30

CL= Corner Lot

**PINEY GLEN FARMS
NEIGHBORHOOD DATA TABLE**

Neighborhood Data Table with Steam Valley Buffers Shown

Neighborhood Rank by Frontage

<u>Subdivision</u>	<u>Lot/Block No.</u>	<u>Frontage</u>	<u>Alignment</u>	<u>Lot Size</u>	<u>Shape</u>	<u>Width at BRL</u>	<u>Buildable Area</u>
Ferris Subdivision	20	25'	Perpendicular	2.20	Pan Handle	150'	1.18
Palatine Subdivision	4-B	120'	Perpendicular	2.00	Irregular	130'	1.30
Piney Glen Farms	26-C	140' CL	Perpendicular	2.70	Rectangle	195'	1.58
Palatine Subdivision	3-B	143'	Perpendicular	2.00	Irregular	154'	1.30
Piney Glen farms	24-C	153'	Perpendicular	2.78	Rectangle	160'	1.81
Palatine Subdivision	1-A	158' CL	Parallel Corner	2.00	Irregular	184'	1.15
Piney Glen Farms	5-C	165' CL	Perpendicular	2.04	Rectangle	190'	1.12
Ferris Subdivision	26	180'	Perpendicular	2.00	Irregular	250'	1.27
Piney Glen Farms	36-A	180'	Perpendicular	2.55	Rectangle	180'	1.75
SUBJECT PROPERTY	37-A	185'	Perpendicular	2.42	Rectangle	185'	1.67
Piney Glen Farms	11-C	185' CL	Perpendicular	2.05	Rectangle	230'	1.07
Piney Glen Farms	15-A	190'	Perpendicular	3.08	Rectangle	205'	1.95
Piney Glen Farms	12-B	190'	Perpendicular	2.47	Rectangle	230'	1.49
SUBJECT PROPERTY	38-A	191'	Perpendicular	2.42	Rectangle	185'	1.65
Piney Glen Farms	6-C	191' CL	Perpendicular	2.07	Rectangle	210'	1.02
Piney Glen Farms	1-A	192' CL	Perpendicular	2.06	Rectangle	230'	1.29
Piney Glen Farms	16-A	197'	Perpendicular	2.55	Rectangle	200'	2.18
Piney Glen Farms	14	202'	Perpendicular	2.04	Rectangle	207'	1.36
Piney Glen Farms	27-A	203'	Perpendicular	2.04	Rectangle	194'	1.36
Piney Glen Farms	17-A	207'	Perpendicular	2.63	Rectangle	205'	1.84
Piney Glen Farms	18-A	210'	Perpendicular	2.63	Rectangle	210'	1.84
Piney Glen Farms	12-C	210'	Perpendicular	2.13	Rectangle	225'	1.40
Piney Glen Farms	34-A	211'	Perpendicular	2.67	Rectangle	215'	1.83
Piney Glen Farms	8-A	212'	Perpendicular	2.03	Rectangle	221'	1.34
Piney Glen Farms	24-A	219'	Perpendicular	2.56	Rectangle	224'	1.30
Piney Glen Farms	25-A	222'	Perpendicular	2.20	Rectangle	226'	1.10
Piney Glen Farms	7-A	225'	Perpendicular	2.01	Rectangle	224'	1.33
Piney Glen Farms	25-C	226'	Perpendicular	2.51	Rectangle	220'	1.57
SUBJECT PROPERTY	40-A	230'	Perpendicular	2.50	Rectangle	240'	1.76
Piney Glen Farms	20-B	233'	Perpendicular	2.00	Rectangle	240'	1.27
Ferris Subdivision	17	234'	Perpendicular	2.00	Rectangle	230'	1.21
Piney Glen Farms	22-A	236'	Perpendicular	5.00	Rectangle	225'	3.50
Piney Glen Farms	4-A	242'	Perpendicular	2.10	Rectangle	230'	1.40
Piney Glen Farms	6-A	245'	Perpendicular	2.04	Rectangle	237'	1.35
Piney Glen Farms	5-A	248'	Perpendicular	2.00	Rectangle	237'	1.36
Piney Glen Farms	6-B	252' CL	Perpendicular	2.10	Rectangle	272'	1.18
Piney Glen Farms	14-C	252' CL	Perpendicular	2.01	Rectangle	285'	1.06
Piney Glen Farms	2-A	266'	Perpendicular	2.02	Rectangle	255'	1.32
Piney Glen Farms	13-C	275'	Perpendicular	2.02	Rectangle	280'	1.26
SUBJECT PROPERTY	39-A	277'	Perpendicular	2.43	Rectangle	265'	1.57
Palatine Subdivision	2-B	284'	Perpendicular	2.00	Irregular	300'	1.00
Piney Glen Farms	7-B	285'	Perpendicular	2.00	Square	300'	1.25
Piney Glen Farms	35-A	285'	Perpendicular	3.03	Rectangle	275'	2.17
Piney Glen Farms	23-C	288' CL	Perpendicular	2.08	Rectangle	320'	1.18
SUBJECT PROPERTY	41-A	289'	Perpendicular	2.50	Rectangle	280'	1.74
Ferris Subdivision	29	300' CL	Parallel	2.10	Irregular	330'	0.35
Piney Glen Farms	34-C	308' CL	Perpendicular	2.01	Rectangle	290'	1.15
Ferris Subdivision	16	325' CL	Perpendicular	2.00	Rectangle	225'	0.80
Ferris Subdivision	27	346'	Parallel	2.10	Rectangle	350'	1.23
Ferris Subdivision	28	346'	Parallel	2.10	Rectangle	360'	0.90
Ferris Subdivision	25	410'	Perpendicular	2.10	Irregular Pie	380'	1.24
Piney Glen Farms	1-B	410' CL	Perpendicular	2.19	Rectangle	460'	1.16
Piney Glen Farms	3-A	447'	Radial	2.05	Pie	387'	1.17
Palatine Subdivision	1-B	507' CL	Parallel Corner	2.00	Irregular	395'	1.00
Piney Glen Farms	23-A	1035' CL	Perpendicular	5.31	2 Corner Lot	940'	3.00

CL= Corner Lot

**PINEY GLEN FARMS
NEIGHBORHOOD DATA TABLE**

Neighborhood Data Table with Steam Valley Buffers Shown

Neighborhood Rank by Lot Size

<u>Subdivision</u>	<u>Lot/Block No.</u>	<u>Frontage</u>	<u>Alignment</u>	<u>Lot Size</u>	<u>Shape</u>	<u>Width at BRL</u>	<u>Buildable Area</u>
Palatine Subdivision	1-A	158' CL	Parallel Corner	2.00	Irregular	184'	1.15
Palatine Subdivision	4-B	120'	Perpendicular	2.00	Irregular	130'	1.30
Palatine Subdivision	3-B	143'	Perpendicular	2.00	Irregular	154'	1.30
Palatine Subdivision	2-B	284'	Perpendicular	2.00	Irregular	300'	1.00
Ferris Subdivision	26	180'	Perpendicular	2.00	Irregular	250'	1.27
Palatine Subdivision	1-B	507' CL	Parallel Corner	2.00	Irregular	395'	1.00
Piney Glen Farms	7-B	285'	Perpendicular	2.00	Square	300'	1.25
Ferris Subdivision	16	325' CL	Perpendicular	2.00	Rectangle	225'	0.80
Piney Glen Farms	5-A	248'	Perpendicular	2.00	Rectangle	237'	1.36
Ferris Subdivision	17	234'	Perpendicular	2.00	Rectangle	230'	1.21
Piney Glen Farms	20-B	233'	Perpendicular	2.00	Rectangle	240'	1.27
Piney Glen Farms	7-A	225'	Perpendicular	2.01	Rectangle	224'	1.33
Piney Glen Farms	34-C	308' CL	Perpendicular	2.01	Rectangle	290'	1.15
Piney Glen Farms	14-C	252' CL	Perpendicular	2.01	Rectangle	285'	1.06
Piney Glen Farms	13-C	275'	Perpendicular	2.02	Rectangle	280'	1.26
Piney Glen Farms	2-A	266'	Perpendicular	2.02	Rectangle	255'	1.32
Piney Glen Farms	8-A	212'	Perpendicular	2.03	Rectangle	221'	1.34
Piney Glen Farms	5-C	165' CL	Perpendicular	2.04	Rectangle	190'	1.12
Piney Glen Farms	14	202'	Perpendicular	2.04	Rectangle	207'	1.36
Piney Glen Farms	27-A	203'	Perpendicular	2.04	Rectangle	194'	1.36
Piney Glen Farms	6-A	245'	Perpendicular	2.04	Rectangle	237'	1.35
Piney Glen Farms	3-A	447'	Radial	2.05	Pie	387'	1.17
Piney Glen Farms	11-C	185' CL	Perpendicular	2.05	Rectangle	230'	1.07
Piney Glen Farms	1-A	192' CL	Perpendicular	2.06	Rectangle	230'	1.29
Piney Glen Farms	6-C	191' CL	Perpendicular	2.07	Rectangle	210'	1.02
Piney Glen Farms	23-C	288' CL	Perpendicular	2.08	Rectangle	320'	1.18
Ferris Subdivision	25	410'	Perpendicular	2.10	Irregular Pie	380'	1.24
Piney Glen Farms	4-A	242'	Perpendicular	2.10	Rectangle	230'	1.40
Piney Glen Farms	6-B	252' CL	Perpendicular	2.10	Rectangle	272'	1.18
Ferris Subdivision	29	300' CL	Parallel	2.10	Irregular	330'	0.35
Ferris Subdivision	28	346'	Parallel	2.10	Rectangle	360'	0.90
Ferris Subdivision	27	346'	Parallel	2.10	Rectangle	350'	1.23
Piney Glen Farms	12-C	210'	Perpendicular	2.13	Rectangle	225'	1.40
Piney Glen Farms	1-B	410' CL	Perpendicular	2.19	Rectangle	460'	1.16
Ferris Subdivision	20	25'	Perpendicular	2.20	Pan Handle	150'	1.18
Piney Glen Farms	25-A	222'	Perpendicular	2.20	Rectangle	226'	1.10
SUBJECT PROPERTY	37-A	185'	Perpendicular	2.42	Rectangle	185'	1.67
SUBJECT PROPERTY	38-A	191'	Perpendicular	2.42	Rectangle	185'	1.65
SUBJECT PROPERTY	39-A	277'	Perpendicular	2.43	Rectangle	265'	1.57
Piney Glen Farms	12-B	190'	Perpendicular	2.47	Rectangle	230'	1.49
SUBJECT PROPERTY	41-A	289'	Perpendicular	2.50	Rectangle	280'	1.74
SUBJECT PROPERTY	40-A	230'	Perpendicular	2.50	Rectangle	240'	1.76
Piney Glen Farms	25-C	226'	Perpendicular	2.51	Rectangle	220'	1.57
Piney Glen Farms	16-A	197'	Perpendicular	2.55	Rectangle	200'	2.18
Piney Glen Farms	36-A	180'	Perpendicular	2.55	Rectangle	180'	1.75
Piney Glen Farms	24-A	219'	Perpendicular	2.56	Rectangle	224'	1.30
Piney Glen Farms	18-A	210'	Perpendicular	2.63	Rectangle	210'	1.84
Piney Glen Farms	17-A	207'	Perpendicular	2.63	Rectangle	205'	1.84
Piney Glen Farms	34-A	211'	Perpendicular	2.67	Rectangle	215'	1.83
Piney Glen Farms	26-C	140' CL	Perpendicular	2.70	Rectangle	195'	1.58
Piney Glen farms	24-C	153'	Perpendicular	2.78	Rectangle	160'	1.81
Piney Glen Farms	35-A	285'	Perpendicular	3.03	Rectangle	275'	2.17
Piney Glen Farms	15-A	190'	Perpendicular	3.08	Rectangle	205'	1.95
Piney Glen Farms	22-A	236'	Perpendicular	5.00	Rectangle	225'	3.50
Piney Glen Farms	23-A	1035' CL	Perpendicular	5.31	2 Corner Lot	940'	3.00

CL= Corner Lot

**PINEY GLEN FARMS
NEIGHBORHOOD DATA TABLE**

Neighborhood Data Table with Steam Valley Buffers Shown

Neighborhood Rank by Width at BRL

<u>Subdivision</u>	<u>Lot/Block No.</u>	<u>Frontage</u>	<u>Alignment</u>	<u>Lot Size</u>	<u>Shape</u>	<u>Width at BRL</u>	<u>Buildable Area</u>
Palatine Subdivision	4-B	120'	Perpendicular	2.00	Irregular	130'	1.30
Ferris Subdivision	20	25'	Perpendicular	2.20	Pan Handle	150'	1.18
Palatine Subdivision	3-B	143'	Perpendicular	2.00	Irregular	154'	1.30
Piney Glen farms	24-C	153'	Perpendicular	2.78	Rectangle	160'	1.81
Piney Glen Farms	36-A	180'	Perpendicular	2.55	Rectangle	180'	1.75
Palatine Subdivision	1-A	158' CL	Parallel Corner	2.00	Irregular	184'	1.15
SUBJECT PROPERTY	38-A	191'	Perpendicular	2.42	Rectangle	185'	1.65
SUBJECT PROPERTY	37-A	185'	Perpendicular	2.42	Rectangle	185'	1.67
Piney Glen Farms	5-C	165' CL	Perpendicular	2.04	Rectangle	190'	1.12
Piney Glen Farms	27-A	203'	Perpendicular	2.04	Rectangle	194'	1.36
Piney Glen Farms	26-C	140' CL	Perpendicular	2.70	Rectangle	195'	1.58
Piney Glen Farms	16-A	197'	Perpendicular	2.55	Rectangle	200'	2.18
Piney Glen Farms	17-A	207'	Perpendicular	2.63	Rectangle	205'	1.84
Piney Glen Farms	15-A	190'	Perpendicular	3.08	Rectangle	205'	1.95
Piney Glen Farms	14	202'	Perpendicular	2.04	Rectangle	207'	1.36
Piney Glen Farms	6-C	191' CL	Perpendicular	2.07	Rectangle	210'	1.02
Piney Glen Farms	18-A	210'	Perpendicular	2.63	Rectangle	210'	1.84
Piney Glen Farms	34-A	211'	Perpendicular	2.67	Rectangle	215'	1.83
Piney Glen Farms	25-C	226'	Perpendicular	2.51	Rectangle	220'	1.57
Piney Glen Farms	8-A	212'	Perpendicular	2.03	Rectangle	221'	1.34
Piney Glen Farms	24-A	219'	Perpendicular	2.56	Rectangle	224'	1.30
Piney Glen Farms	7-A	225'	Perpendicular	2.01	Rectangle	224'	1.33
Piney Glen Farms	22-A	236'	Perpendicular	5.00	Rectangle	225'	3.50
Piney Glen Farms	12-C	210'	Perpendicular	2.13	Rectangle	225'	1.40
Ferris Subdivision	16	325' CL	Perpendicular	2.00	Rectangle	225'	0.80
Piney Glen Farms	25-A	222'	Perpendicular	2.20	Rectangle	226'	1.10
Ferris Subdivision	17	234'	Perpendicular	2.00	Rectangle	230'	1.21
Piney Glen Farms	11-C	185' CL	Perpendicular	2.05	Rectangle	230'	1.07
Piney Glen Farms	4-A	242'	Perpendicular	2.10	Rectangle	230'	1.40
Piney Glen Farms	12-B	190'	Perpendicular	2.47	Rectangle	230'	1.49
Piney Glen Farms	1-A	192' CL	Perpendicular	2.06	Rectangle	230'	1.29
Piney Glen Farms	6-A	245'	Perpendicular	2.04	Rectangle	237'	1.35
Piney Glen Farms	5-A	248'	Perpendicular	2.00	Rectangle	237'	1.36
SUBJECT PROPERTY	40-A	230'	Perpendicular	2.50	Rectangle	240'	1.76
Piney Glen Farms	20-B	233'	Perpendicular	2.00	Rectangle	240'	1.27
Ferris Subdivision	26	180'	Perpendicular	2.00	Irregular	250'	1.27
Piney Glen Farms	2-A	266'	Perpendicular	2.02	Rectangle	255'	1.32
SUBJECT PROPERTY	39-A	277'	Perpendicular	2.43	Rectangle	265'	1.57
Piney Glen Farms	6-B	252' CL	Perpendicular	2.10	Rectangle	272'	1.18
Piney Glen Farms	35-A	285'	Perpendicular	3.03	Rectangle	275'	2.17
Piney Glen Farms	13-C	275'	Perpendicular	2.02	Rectangle	280'	1.26
SUBJECT PROPERTY	41-A	289'	Perpendicular	2.50	Rectangle	280'	1.74
Piney Glen Farms	14-C	252' CL	Perpendicular	2.01	Rectangle	285'	1.06
Piney Glen Farms	34-C	308' CL	Perpendicular	2.01	Rectangle	290'	1.15
Piney Glen Farms	7-B	285'	Perpendicular	2.00	Square	300'	1.25
Palatine Subdivision	2-B	284'	Perpendicular	2.00	Irregular	300'	1.00
Piney Glen Farms	23-C	288' CL	Perpendicular	2.08	Rectangle	320'	1.18
Ferris Subdivision	29	300' CL	Parallel	2.10	Irregular	330'	0.35
Ferris Subdivision	27	346'	Parallel	2.10	Rectangle	350'	1.23
Ferris Subdivision	28	346'	Parallel	2.10	Rectangle	360'	0.90
Ferris Subdivision	25	410'	Perpendicular	2.10	Irregular Pie	380'	1.24
Piney Glen Farms	3-A	447'	Radial	2.05	Pie	387'	1.17
Palatine Subdivision	1-B	507' CL	Parallel Corner	2.00	Irregular	395'	1.00
Piney Glen Farms	1-B	410' CL	Perpendicular	2.19	Rectangle	460'	1.16
Piney Glen Farms	23-A	1035' CL	Perpendicular	5.31	2 Corner Lot	940'	3.00

CL= Corner Lot

**PINEY GLEN FARMS
NEIGHBORHOOD DATA TABLE**

Neighborhood Data Table with Steam Valley Buffers Shown

Neighborhood Rank by Buildable Area

<u>Subdivision</u>	<u>Lot/Block No.</u>	<u>Frontage</u>	<u>Alignment</u>	<u>Lot Size</u>	<u>Shape</u>	<u>Width at BRL</u>	<u>Buildable Area</u>
Ferris Subdivision	29	300' CL	Parallel	2.10	Irregular	330'	0.35
Ferris Subdivision	16	325' CL	Perpendicular	2.00	Rectangle	225'	0.80
Ferris Subdivision	28	346'	Parallel	2.10	Rectangle	360'	0.90
Palatine Subdivision	1-B	507' CL	Parallel Corner	2.00	Irregular	395'	1.00
Palatine Subdivision	2-B	284'	Perpendicular	2.00	Irregular	300'	1.00
Piney Glen Farms	6-C	191' CL	Perpendicular	2.07	Rectangle	210'	1.02
Piney Glen Farms	14-C	252' CL	Perpendicular	2.01	Rectangle	285'	1.06
Piney Glen Farms	11-C	185' CL	Perpendicular	2.05	Rectangle	230'	1.07
Piney Glen Farms	25-A	222'	Perpendicular	2.20	Rectangle	226'	1.10
Piney Glen Farms	5-C	165' CL	Perpendicular	2.04	Rectangle	190'	1.12
Piney Glen Farms	34-C	308' CL	Perpendicular	2.01	Rectangle	290'	1.15
Palatine Subdivision	1-A	158' CL	Parallel Corner	2.00	Irregular	184'	1.15
Piney Glen Farms	1-B	410' CL	Perpendicular	2.19	Rectangle	460'	1.16
Piney Glen Farms	3-A	447'	Radial	2.05	Pie	387'	1.17
Piney Glen Farms	23-C	288' CL	Perpendicular	2.08	Rectangle	320'	1.18
Piney Glen Farms	6-B	252' CL	Perpendicular	2.10	Rectangle	272'	1.18
Ferris Subdivision	20	25'	Perpendicular	2.20	Pan Handle	150'	1.18
Ferris Subdivision	17	234'	Perpendicular	2.00	Rectangle	230'	1.21
Ferris Subdivision	27	346'	Parallel	2.10	Rectangle	350'	1.23
Ferris Subdivision	25	410'	Perpendicular	2.10	Irregular Pie	380'	1.24
Piney Glen Farms	7-B	285'	Perpendicular	2.00	Square	300'	1.25
Piney Glen Farms	13-C	275'	Perpendicular	2.02	Rectangle	280'	1.26
Piney Glen Farms	20-B	233'	Perpendicular	2.00	Rectangle	240'	1.27
Ferris Subdivision	26	180'	Perpendicular	2.00	Irregular	250'	1.27
Piney Glen Farms	1-A	192' CL	Perpendicular	2.06	Rectangle	230'	1.29
Piney Glen Farms	24-A	219'	Perpendicular	2.56	Rectangle	224'	1.30
Palatine Subdivision	3-B	143'	Perpendicular	2.00	Irregular	154'	1.30
Palatine Subdivision	4-B	120'	Perpendicular	2.00	Irregular	130'	1.30
Piney Glen Farms	2-A	266'	Perpendicular	2.02	Rectangle	255'	1.32
Piney Glen Farms	7-A	225'	Perpendicular	2.01	Rectangle	224'	1.33
Piney Glen Farms	8-A	212'	Perpendicular	2.03	Rectangle	221'	1.34
Piney Glen Farms	6-A	245'	Perpendicular	2.04	Rectangle	237'	1.35
Piney Glen Farms	14	202'	Perpendicular	2.04	Rectangle	207'	1.36
Piney Glen Farms	27-A	203'	Perpendicular	2.04	Rectangle	194'	1.36
Piney Glen Farms	5-A	248'	Perpendicular	2.00	Rectangle	237'	1.36
Piney Glen Farms	12-C	210'	Perpendicular	2.13	Rectangle	225'	1.40
Piney Glen Farms	4-A	242'	Perpendicular	2.10	Rectangle	230'	1.40
Piney Glen Farms	12-B	190'	Perpendicular	2.47	Rectangle	230'	1.49
Piney Glen Farms	25-C	226'	Perpendicular	2.51	Rectangle	220'	1.57
SUBJECT PROPERTY	39-A	277'	Perpendicular	2.43	Rectangle	265'	1.57
Piney Glen Farms	26-C	140' CL	Perpendicular	2.70	Rectangle	195'	1.58
SUBJECT PROPERTY	38-A	191'	Perpendicular	2.42	Rectangle	185'	1.65
SUBJECT PROPERTY	37-A	185'	Perpendicular	2.42	Rectangle	185'	1.67
SUBJECT PROPERTY	41-A	289'	Perpendicular	2.50	Rectangle	280'	1.74
Piney Glen Farms	36-A	180'	Perpendicular	2.55	Rectangle	180'	1.75
SUBJECT PROPERTY	40-A	230'	Perpendicular	2.50	Rectangle	240'	1.76
Piney Glen farms	24-C	153'	Perpendicular	2.78	Rectangle	160'	1.81
Piney Glen Farms	34-A	211'	Perpendicular	2.67	Rectangle	215'	1.83
Piney Glen Farms	18-A	210'	Perpendicular	2.63	Rectangle	210'	1.84
Piney Glen Farms	17-A	207'	Perpendicular	2.63	Rectangle	205'	1.84
Piney Glen Farms	15-A	190'	Perpendicular	3.08	Rectangle	205'	1.95
Piney Glen Farms	35-A	285'	Perpendicular	3.03	Rectangle	275'	2.17
Piney Glen Farms	16-A	197'	Perpendicular	2.55	Rectangle	200'	2.18
Piney Glen Farms	23-A	1035' CL	Perpendicular	5.31	2 Corner Lot	940'	3.00
Piney Glen Farms	22-A	236'	Perpendicular	5.00	Rectangle	225'	3.50

CL= Corner Lot



**PINEY GLEN FARMS
NEIGHBORHOOD DATA TABLE**

Attachment C-2

Neighborhood Data Table with Steam Valley Buffers Removed

<u>Subdivision</u>	<u>Lot/Block No.</u>	<u>Frontage</u>	<u>Alignment</u>	<u>Lot Size</u>	<u>Shape</u>	<u>Width at BRL</u>	<u>Buildable Area</u>
Piney Glen Farms	34-C	308' CL	Perpendicular	2.01	Rectangle	290'	0.85
Piney Glen Farms	26-C	140' CL	Perpendicular	2.70	Rectangle	195'	0.24
Piney Glen Farms	25-C	226'	Perpendicular	2.51	Rectangle	220'	0.57
Piney Glen Farms	24-C	153'	Perpendicular	2.78	Rectangle	160'	1.51
Piney Glen Farms	23-C	288' CL	Perpendicular	2.08	Rectangle	320'	1.18
Piney Glen Farms	14-C	252' CL	Perpendicular	2.01	Rectangle	285'	1.06
Piney Glen Farms	13-C	275'	Perpendicular	2.02	Rectangle	280'	1.26
Piney Glen Farms	12-C	210'	Perpendicular	2.13	Rectangle	225'	1.40
Piney Glen Farms	11-C	185' CL	Perpendicular	2.05	Rectangle	230'	0.67
Piney Glen Farms	6-C	191' CL	Perpendicular	2.07	Rectangle	210'	0.42
Piney Glen Farms	5-C	165' CL	Perpendicular	2.04	Rectangle	190'	0.52
Piney Glen Farms	1-B	410' CL	Perpendicular	2.19	Rectangle	460'	1.06
Piney Glen Farms	20-B	233'	Perpendicular	2.00	Rectangle	240'	1.27
Piney Glen Farms	12-B	190'	Perpendicular	2.47	Rectangle	230'	1.49
Piney Glen Farms	7-B	285'	Perpendicular	2.00	Square	300'	1.25
Piney Glen Farms	6-B	252' CL	Perpendicular	2.10	Rectangle	272'	1.18
Piney Glen Farms	1-A	192' CL	Perpendicular	2.06	Rectangle	230'	1.29
Piney Glen Farms	2-A	266'	Perpendicular	2.02	Rectangle	255'	1.32
Piney Glen Farms	3-A	447'	Radial	2.05	Pie	387'	1.17
Piney Glen Farms	4-A	242'	Perpendicular	2.10	Rectangle	230'	1.40
Piney Glen Farms	5-A	248'	Perpendicular	2.00	Rectangle	237'	0.96
Piney Glen Farms	6-A	245'	Perpendicular	2.04	Rectangle	237'	1.35
Piney Glen Farms	7-A	225'	Perpendicular	2.01	Rectangle	224'	1.33
Piney Glen Farms	8-A	212'	Perpendicular	2.03	Rectangle	221'	0.74
Piney Glen Farms	14	202'	Perpendicular	2.04	Rectangle	207'	0.76
Piney Glen Farms	27-A	203'	Perpendicular	2.04	Rectangle	194'	1.36
Piney Glen Farms	24-A	219'	Perpendicular	2.56	Rectangle	224'	0.50
Piney Glen Farms	25-A	222'	Perpendicular	2.20	Rectangle	226'	0.70
SUBJECT PROPERTY	37-A	185'	Perpendicular	2.42	Rectangle	185'	1.42
SUBJECT PROPERTY	38-A	191'	Perpendicular	2.42	Rectangle	185'	0.55
SUBJECT PROPERTY	39-A	277'	Perpendicular	2.43	Rectangle	265'	1.57
SUBJECT PROPERTY	40-A	230'	Perpendicular	2.50	Rectangle	240'	1.45
SUBJECT PROPERTY	41-A	289'	Perpendicular	2.50	Rectangle	280'	0.65
Piney Glen Farms	22-A	236'	Perpendicular	5.00	Rectangle	225'	2.90
Piney Glen Farms	23-A	1035' CL	Perpendicular	5.31	2 Corner Lot	940'	2.80
Piney Glen Farms	18-A	210'	Perpendicular	2.63	Rectangle	210'	1.84
Piney Glen Farms	17-A	207'	Perpendicular	2.63	Rectangle	205'	1.84
Piney Glen Farms	16-A	197'	Perpendicular	2.55	Rectangle	200'	1.78
Piney Glen Farms	15-A	190'	Perpendicular	3.08	Rectangle	205'	1.95
Piney Glen Farms	36-A	180'	Perpendicular	2.55	Rectangle	180'	1.75
Piney Glen Farms	35-A	285'	Perpendicular	3.03	Rectangle	275'	2.17
Piney Glen Farms	34-A	211'	Perpendicular	2.67	Rectangle	215'	1.83
Ferris Subdivision	25	410'	Perpendicular	2.10	Irregular Pie	380'	0.80
Ferris Subdivision	20	25'	Perpendicular	2.20	Pan Handle	150'	0.40
Ferris Subdivision	26	180'	Perpendicular	2.00	Irregular	250'	0.90
Ferris Subdivision	27	346'	Parallel	2.10	Rectangle	350'	0.84
Ferris Subdivision	28	346'	Parallel	2.10	Rectangle	360'	0.70
Ferris Subdivision	29	300' CL	Parallel	2.10	Irregular	330'	0.35
Ferris Subdivision	16	325' CL	Perpendicular	2.00	Rectangle	225'	0.60
Ferris Subdivision	17	234'	Perpendicular	2.00	Rectangle	230'	0.46
Palatine Subdivision	1-A	158' CL	Parallel Corner	2.00	Irregular	184'	1.15
Palatine Subdivision	1-B	507' CL	Parallel Corner	2.00	Irregular	395'	1.00
Palatine Subdivision	2-B	284'	Perpendicular	2.00	Irregular	300'	1.00
Palatine Subdivision	3-B	143'	Perpendicular	2.00	Irregular	154'	1.30
Palatine Subdivision	4-B	120'	Perpendicular	2.00	Irregular	130'	1.30

CL= Corner Lot

**PINEY GLEN FARMS
NEIGHBORHOOD DATA TABLE**

Neighborhood Data Table with Steam Valley Buffers Removed

Neighborhood Rank by Frontage

<u>Subdivision</u>	<u>Lot/Block No.</u>	<u>Frontage</u>	<u>Alignment</u>	<u>Lot Size</u>	<u>Shape</u>	<u>Width at BRL</u>	<u>Buildable Area</u>
Ferris Subdivision	20	25'	Perpendicular	2.20	Pan Handle	150'	0.40
Palatine Subdivision	4-B	120'	Perpendicular	2.00	Irregular	130'	1.30
Piney Glen Farms	26-C	140' CL	Perpendicular	2.70	Rectangle	195'	0.24
Palatine Subdivision	3-B	143'	Perpendicular	2.00	Irregular	154'	1.30
Piney Glen Farms	24-C	153'	Perpendicular	2.78	Rectangle	160'	1.51
Palatine Subdivision	1-A	158' CL	Parallel Corner	2.00	Irregular	184'	1.15
Piney Glen Farms	5-C	165' CL	Perpendicular	2.04	Rectangle	190'	0.52
Ferris Subdivision	26	180'	Perpendicular	2.00	Irregular	250'	0.90
Piney Glen Farms	36-A	180'	Perpendicular	2.55	Rectangle	180'	1.75
SUBJECT PROPERTY	37-A	185'	Perpendicular	2.42	Rectangle	185'	1.42
Piney Glen Farms	11-C	185' CL	Perpendicular	2.05	Rectangle	230'	0.67
Piney Glen Farms	15-A	190'	Perpendicular	3.08	Rectangle	205'	1.95
Piney Glen Farms	12-B	190'	Perpendicular	2.47	Rectangle	230'	1.49
SUBJECT PROPERTY	38-A	191'	Perpendicular	2.42	Rectangle	185'	0.55
Piney Glen Farms	6-C	191' CL	Perpendicular	2.07	Rectangle	210'	0.42
Piney Glen Farms	1-A	192' CL	Perpendicular	2.06	Rectangle	230'	1.29
Piney Glen Farms	16-A	197'	Perpendicular	2.55	Rectangle	200'	1.78
Piney Glen Farms	14	202'	Perpendicular	2.04	Rectangle	207'	0.76
Piney Glen Farms	27-A	203'	Perpendicular	2.04	Rectangle	194'	1.36
Piney Glen Farms	17-A	207'	Perpendicular	2.63	Rectangle	205'	1.84
Piney Glen Farms	18-A	210'	Perpendicular	2.63	Rectangle	210'	1.84
Piney Glen Farms	12-C	210'	Perpendicular	2.13	Rectangle	225'	1.40
Piney Glen Farms	34-A	211'	Perpendicular	2.67	Rectangle	215'	1.83
Piney Glen Farms	8-A	212'	Perpendicular	2.03	Rectangle	221'	0.74
Piney Glen Farms	24-A	219'	Perpendicular	2.56	Rectangle	224'	0.50
Piney Glen Farms	25-A	222'	Perpendicular	2.20	Rectangle	226'	0.70
Piney Glen Farms	7-A	225'	Perpendicular	2.01	Rectangle	224'	1.33
Piney Glen Farms	25-C	226'	Perpendicular	2.51	Rectangle	220'	0.57
SUBJECT PROPERTY	40-A	230'	Perpendicular	2.50	Rectangle	240'	1.45
Piney Glen Farms	20-B	233'	Perpendicular	2.00	Rectangle	240'	1.27
Ferris Subdivision	17	234'	Perpendicular	2.00	Rectangle	230'	0.46
Piney Glen Farms	22-A	236'	Perpendicular	5.00	Rectangle	225'	2.90
Piney Glen Farms	4-A	242'	Perpendicular	2.10	Rectangle	230'	1.40
Piney Glen Farms	6-A	245'	Perpendicular	2.04	Rectangle	237'	1.35
Piney Glen Farms	5-A	248'	Perpendicular	2.00	Rectangle	237'	0.96
Piney Glen Farms	6-B	252' CL	Perpendicular	2.10	Rectangle	272'	1.18
Piney Glen Farms	14-C	252' CL	Perpendicular	2.01	Rectangle	285'	1.06
Piney Glen Farms	2-A	266'	Perpendicular	2.02	Rectangle	255'	1.32
Piney Glen Farms	13-C	275'	Perpendicular	2.02	Rectangle	280'	1.26
SUBJECT PROPERTY	39-A	277'	Perpendicular	2.43	Rectangle	265'	1.57
Palatine Subdivision	2-B	284'	Perpendicular	2.00	Irregular	300'	1.00
Piney Glen Farms	7-B	285'	Perpendicular	2.00	Square	300'	1.25
Piney Glen Farms	35-A	285'	Perpendicular	3.03	Rectangle	275'	2.17
Piney Glen Farms	23-C	288' CL	Perpendicular	2.08	Rectangle	320'	1.18
SUBJECT PROPERTY	41-A	289'	Perpendicular	2.50	Rectangle	280'	0.65
Ferris Subdivision	29	300' CL	Parallel	2.10	Irregular	330'	0.35
Piney Glen Farms	34-C	308' CL	Perpendicular	2.01	Rectangle	290'	0.85
Ferris Subdivision	16	325' CL	Perpendicular	2.00	Rectangle	225'	0.60
Ferris Subdivision	27	346'	Parallel	2.10	Rectangle	350'	0.84
Ferris Subdivision	28	346'	Parallel	2.10	Rectangle	360'	0.70
Ferris Subdivision	25	410'	Perpendicular	2.10	Irregular Pie	380'	0.80
Piney Glen Farms	1-B	410' CL	Perpendicular	2.19	Rectangle	460'	1.06
Piney Glen Farms	3-A	447'	Radial	2.05	Pie	387'	1.17
Palatine Subdivision	1-B	507' CL	Parallel Corner	2.00	Irregular	395'	1.00
Piney Glen Farms	23-A	1035' CL	Perpendicular	5.31	2 Corner Lot	940'	2.80

CL= Corner Lot

**PINEY GLEN FARMS
NEIGHBORHOOD DATA TABLE**

Neighborhood Data Table with Steam Valley Buffers Removed

Neighborhood Rank by Lot Size

<u>Subdivision</u>	<u>Lot/Block No.</u>	<u>Frontage</u>	<u>Alignment</u>	<u>Lot Size</u>	<u>Shape</u>	<u>Width at BRL</u>	<u>Buildable Area</u>
Palatine Subdivision	1-A	158' CL	Parallel Corner	2.00	Irregular	184'	1.15
Palatine Subdivision	4-B	120'	Perpendicular	2.00	Irregular	130'	1.30
Palatine Subdivision	3-B	143'	Perpendicular	2.00	Irregular	154'	1.30
Palatine Subdivision	2-B	284'	Perpendicular	2.00	Irregular	300'	1.00
Ferris Subdivision	26	180'	Perpendicular	2.00	Irregular	250'	0.90
Palatine Subdivision	1-B	507' CL	Parallel Corner	2.00	Irregular	395'	1.00
Piney Glen Farms	7-B	285'	Perpendicular	2.00	Square	300'	1.25
Ferris Subdivision	16	325' CL	Perpendicular	2.00	Rectangle	225'	0.60
Piney Glen Farms	5-A	248'	Perpendicular	2.00	Rectangle	237'	0.96
Ferris Subdivision	17	234'	Perpendicular	2.00	Rectangle	230'	0.46
Piney Glen Farms	20-B	233'	Perpendicular	2.00	Rectangle	240'	1.27
Piney Glen Farms	7-A	225'	Perpendicular	2.01	Rectangle	224'	1.33
Piney Glen Farms	34-C	308' CL	Perpendicular	2.01	Rectangle	290'	0.85
Piney Glen Farms	14-C	252' CL	Perpendicular	2.01	Rectangle	285'	1.06
Piney Glen Farms	13-C	275'	Perpendicular	2.02	Rectangle	280'	1.26
Piney Glen Farms	2-A	266'	Perpendicular	2.02	Rectangle	255'	1.32
Piney Glen Farms	8-A	212'	Perpendicular	2.03	Rectangle	221'	0.74
Piney Glen Farms	5-C	165' CL	Perpendicular	2.04	Rectangle	190'	0.52
Piney Glen Farms	14	202'	Perpendicular	2.04	Rectangle	207'	0.76
Piney Glen Farms	27-A	203'	Perpendicular	2.04	Rectangle	194'	1.36
Piney Glen Farms	6-A	245'	Perpendicular	2.04	Rectangle	237'	1.35
Piney Glen Farms	3-A	447'	Radial	2.05	Pie	387'	1.17
Piney Glen Farms	11-C	185' CL	Perpendicular	2.05	Rectangle	230'	0.67
Piney Glen Farms	1-A	192' CL	Perpendicular	2.06	Rectangle	230'	1.29
Piney Glen Farms	6-C	191' CL	Perpendicular	2.07	Rectangle	210'	0.42
Piney Glen Farms	23-C	288' CL	Perpendicular	2.08	Rectangle	320'	1.18
Ferris Subdivision	25	410'	Perpendicular	2.10	Irregular Pie	380'	0.80
Piney Glen Farms	4-A	242'	Perpendicular	2.10	Rectangle	230'	1.40
Piney Glen Farms	6-B	252' CL	Perpendicular	2.10	Rectangle	272'	1.18
Ferris Subdivision	29	300' CL	Parallel	2.10	Irregular	330'	0.35
Ferris Subdivision	28	346'	Parallel	2.10	Rectangle	360'	0.70
Ferris Subdivision	27	346'	Parallel	2.10	Rectangle	350'	0.84
Piney Glen Farms	12-C	210'	Perpendicular	2.13	Rectangle	225'	1.40
Piney Glen Farms	1-B	410' CL	Perpendicular	2.19	Rectangle	460'	1.06
Ferris Subdivision	20	25'	Perpendicular	2.20	Pan Handle	150'	0.40
Piney Glen Farms	25-A	222'	Perpendicular	2.20	Rectangle	226'	0.70
SUBJECT PROPERTY	37-A	185'	Perpendicular	2.42	Rectangle	185'	1.42
SUBJECT PROPERTY	38-A	191'	Perpendicular	2.42	Rectangle	185'	0.55
SUBJECT PROPERTY	39-A	277'	Perpendicular	2.43	Rectangle	265'	1.57
Piney Glen Farms	12-B	190'	Perpendicular	2.47	Rectangle	230'	1.49
SUBJECT PROPERTY	41-A	289'	Perpendicular	2.50	Rectangle	280'	0.65
SUBJECT PROPERTY	40-A	230'	Perpendicular	2.50	Rectangle	240'	1.45
Piney Glen Farms	25-C	226'	Perpendicular	2.51	Rectangle	220'	0.57
Piney Glen Farms	16-A	197'	Perpendicular	2.55	Rectangle	200'	1.78
Piney Glen Farms	36-A	180'	Perpendicular	2.55	Rectangle	180'	1.75
Piney Glen Farms	24-A	219'	Perpendicular	2.56	Rectangle	224'	0.50
Piney Glen Farms	18-A	210'	Perpendicular	2.63	Rectangle	210'	1.84
Piney Glen Farms	17-A	207'	Perpendicular	2.63	Rectangle	205'	1.84
Piney Glen Farms	34-A	211'	Perpendicular	2.67	Rectangle	215'	1.83
Piney Glen Farms	26-C	140' CL	Perpendicular	2.70	Rectangle	195'	0.24
Piney Glen Farms	24-C	153'	Perpendicular	2.78	Rectangle	160'	1.51
Piney Glen Farms	35-A	285'	Perpendicular	3.03	Rectangle	275'	2.17
Piney Glen Farms	15-A	190'	Perpendicular	3.08	Rectangle	205'	1.95
Piney Glen Farms	22-A	236'	Perpendicular	5.00	Rectangle	225'	2.90
Piney Glen Farms	23-A	1035' CL	Perpendicular	5.31	2 Corner Lot	940'	2.80

CL= Corner Lot

**PINEY GLEN FARMS
NEIGHBORHOOD DATA TABLE**

Neighborhood Data Table with Steam Valley Buffers Removed

Neighborhood Rank by Buildable Area

<u>Subdivision</u>	<u>Lot/Block No.</u>	<u>Frontage</u>	<u>Alignment</u>	<u>Lot Size</u>	<u>Shape</u>	<u>Width at BRL</u>	<u>Buildable Area</u>
Piney Glen Farms	26-C	140' CL	Perpendicular	2.70	Rectangle	195'	0.24
Ferris Subdivision	29	300' CL	Parallel	2.10	Irregular	330'	0.35
Ferris Subdivision	20	25'	Perpendicular	2.20	Pan Handle	150'	0.40
Piney Glen Farms	6-C	191' CL	Perpendicular	2.07	Rectangle	210'	0.42
Ferris Subdivision	17	234'	Perpendicular	2.00	Rectangle	230'	0.46
Piney Glen Farms	24-A	219'	Perpendicular	2.56	Rectangle	224'	0.50
Piney Glen Farms	5-C	165' CL	Perpendicular	2.04	Rectangle	190'	0.52
SUBJECT PROPERTY	38-A	191'	Perpendicular	2.42	Rectangle	185'	0.55
Piney Glen Farms	25-C	226'	Perpendicular	2.51	Rectangle	220'	0.57
Ferris Subdivision	16	325' CL	Perpendicular	2.00	Rectangle	225'	0.60
SUBJECT PROPERTY	41-A	289'	Perpendicular	2.50	Rectangle	280'	0.65
Piney Glen Farms	11-C	185' CL	Perpendicular	2.05	Rectangle	230'	0.67
Piney Glen Farms	25-A	222'	Perpendicular	2.20	Rectangle	226'	0.70
Ferris Subdivision	28	346'	Parallel	2.10	Rectangle	360'	0.70
Piney Glen Farms	8-A	212'	Perpendicular	2.03	Rectangle	221'	0.74
Piney Glen Farms	14	202'	Perpendicular	2.04	Rectangle	207'	0.76
Ferris Subdivision	25	410'	Perpendicular	2.10	Irregular Pie	380'	0.80
Ferris Subdivision	27	346'	Parallel	2.10	Rectangle	350'	0.84
Piney Glen Farms	34-C	308' CL	Perpendicular	2.01	Rectangle	290'	0.85
Ferris Subdivision	26	180'	Perpendicular	2.00	Irregular	250'	0.90
Piney Glen Farms	5-A	248'	Perpendicular	2.00	Rectangle	237'	0.96
Palatine Subdivision	2-B	284'	Perpendicular	2.00	Irregular	300'	1.00
Palatine Subdivision	1-B	507' CL	Parallel Corner	2.00	Irregular	395'	1.00
Piney Glen Farms	14-C	252' CL	Perpendicular	2.01	Rectangle	285'	1.06
Piney Glen Farms	1-B	410' CL	Perpendicular	2.19	Rectangle	460'	1.06
Palatine Subdivision	1-A	158' CL	Parallel Corner	2.00	Irregular	184'	1.15
Piney Glen Farms	3-A	447'	Radial	2.05	Pie	387'	1.17
Piney Glen Farms	6-B	252' CL	Perpendicular	2.10	Rectangle	272'	1.18
Piney Glen Farms	23-C	288' CL	Perpendicular	2.08	Rectangle	320'	1.18
Piney Glen Farms	7-B	285'	Perpendicular	2.00	Square	300'	1.25
Piney Glen Farms	13-C	275'	Perpendicular	2.02	Rectangle	280'	1.26
Piney Glen Farms	20-B	233'	Perpendicular	2.00	Rectangle	240'	1.27
Piney Glen Farms	1-A	192' CL	Perpendicular	2.06	Rectangle	230'	1.29
Palatine Subdivision	4-B	120'	Perpendicular	2.00	Irregular	130'	1.30
Palatine Subdivision	3-B	143'	Perpendicular	2.00	Irregular	154'	1.30
Piney Glen Farms	2-A	266'	Perpendicular	2.02	Rectangle	255'	1.32
Piney Glen Farms	7-A	225'	Perpendicular	2.01	Rectangle	224'	1.33
Piney Glen Farms	6-A	245'	Perpendicular	2.04	Rectangle	237'	1.35
Piney Glen Farms	27-A	203'	Perpendicular	2.04	Rectangle	194'	1.36
Piney Glen Farms	4-A	242'	Perpendicular	2.10	Rectangle	230'	1.40
Piney Glen Farms	12-C	210'	Perpendicular	2.13	Rectangle	225'	1.40
SUBJECT PROPERTY	37-A	185'	Perpendicular	2.42	Rectangle	185'	1.42
SUBJECT PROPERTY	40-A	230'	Perpendicular	2.50	Rectangle	240'	1.45
Piney Glen Farms	12-B	190'	Perpendicular	2.47	Rectangle	230'	1.49
Piney Glen Farms	24-C	153'	Perpendicular	2.78	Rectangle	160'	1.51
SUBJECT PROPERTY	39-A	277'	Perpendicular	2.43	Rectangle	265'	1.57
Piney Glen Farms	36-A	180'	Perpendicular	2.55	Rectangle	180'	1.75
Piney Glen Farms	16-A	197'	Perpendicular	2.55	Rectangle	200'	1.78
Piney Glen Farms	34-A	211'	Perpendicular	2.67	Rectangle	215'	1.83
Piney Glen Farms	17-A	207'	Perpendicular	2.63	Rectangle	205'	1.84
Piney Glen Farms	18-A	210'	Perpendicular	2.63	Rectangle	210'	1.84
Piney Glen Farms	15-A	190'	Perpendicular	3.08	Rectangle	205'	1.95
Piney Glen Farms	35-A	285'	Perpendicular	3.03	Rectangle	275'	2.17
Piney Glen Farms	23-A	1035' CL	Perpendicular	5.31	2 Corner Lot	940'	2.80
Piney Glen Farms	22-A	236'	Perpendicular	5.00	Rectangle	225'	2.90

CL= Corner Lot

**PINEY GLEN FARMS
NEIGHBORHOOD DATA TABLE**

Neighborhood Data Table with Steam Valley Buffers Removed

Neighborhood Rank by Width at BRL

<u>Subdivision</u>	<u>Lot/Block No.</u>	<u>Frontage</u>	<u>Alignment</u>	<u>Lot Size</u>	<u>Shape</u>	<u>Width at BRL</u>	<u>Buildable Area</u>
Palatine Subdivision	4-B	120'	Perpendicular	2.00	Irregular	130'	1.30
Ferris Subdivision	20	25'	Perpendicular	2.20	Pan Handle	150'	0.40
Palatine Subdivision	3-B	143'	Perpendicular	2.00	Irregular	154'	1.30
Piney Glen Farms	24-C	153'	Perpendicular	2.78	Rectangle	160'	1.51
Piney Glen Farms	36-A	180'	Perpendicular	2.55	Rectangle	180'	1.75
Palatine Subdivision	1-A	158' CL	Parallel Corner	2.00	Irregular	184'	1.15
SUBJECT PROPERTY	38-A	191'	Perpendicular	2.42	Rectangle	185'	0.55
SUBJECT PROPERTY	37-A	185'	Perpendicular	2.42	Rectangle	185'	1.42
Piney Glen Farms	5-C	165' CL	Perpendicular	2.04	Rectangle	190'	0.52
Piney Glen Farms	27-A	203'	Perpendicular	2.04	Rectangle	194'	1.36
Piney Glen Farms	26-C	140' CL	Perpendicular	2.70	Rectangle	195'	0.24
Piney Glen Farms	16-A	197'	Perpendicular	2.55	Rectangle	200'	1.78
Piney Glen Farms	17-A	207'	Perpendicular	2.63	Rectangle	205'	1.84
Piney Glen Farms	15-A	190'	Perpendicular	3.08	Rectangle	205'	1.95
Piney Glen Farms	14	202'	Perpendicular	2.04	Rectangle	207'	0.76
Piney Glen Farms	6-C	191' CL	Perpendicular	2.07	Rectangle	210'	0.42
Piney Glen Farms	18-A	210'	Perpendicular	2.63	Rectangle	210'	1.84
Piney Glen Farms	34-A	211'	Perpendicular	2.67	Rectangle	215'	1.83
Piney Glen Farms	25-C	226'	Perpendicular	2.51	Rectangle	220'	0.57
Piney Glen Farms	8-A	212'	Perpendicular	2.03	Rectangle	221'	0.74
Piney Glen Farms	24-A	219'	Perpendicular	2.56	Rectangle	224'	0.50
Piney Glen Farms	7-A	225'	Perpendicular	2.01	Rectangle	224'	1.33
Piney Glen Farms	22-A	236'	Perpendicular	5.00	Rectangle	225'	2.90
Piney Glen Farms	12-C	210'	Perpendicular	2.13	Rectangle	225'	1.40
Ferris Subdivision	16	325' CL	Perpendicular	2.00	Rectangle	225'	0.60
Piney Glen Farms	25-A	222'	Perpendicular	2.20	Rectangle	226'	0.70
Ferris Subdivision	17	234'	Perpendicular	2.00	Rectangle	230'	0.46
Piney Glen Farms	11-C	185' CL	Perpendicular	2.05	Rectangle	230'	0.67
Piney Glen Farms	4-A	242'	Perpendicular	2.10	Rectangle	230'	1.40
Piney Glen Farms	12-B	190'	Perpendicular	2.47	Rectangle	230'	1.49
Piney Glen Farms	1-A	192' CL	Perpendicular	2.06	Rectangle	230'	1.29
Piney Glen Farms	6-A	245'	Perpendicular	2.04	Rectangle	237'	1.35
Piney Glen Farms	5-A	248'	Perpendicular	2.00	Rectangle	237'	0.96
SUBJECT PROPERTY	40-A	230'	Perpendicular	2.50	Rectangle	240'	1.45
Piney Glen Farms	20-B	233'	Perpendicular	2.00	Rectangle	240'	1.27
Ferris Subdivision	26	180'	Perpendicular	2.00	Irregular	250'	0.90
Piney Glen Farms	2-A	266'	Perpendicular	2.02	Rectangle	255'	1.32
SUBJECT PROPERTY	39-A	277'	Perpendicular	2.43	Rectangle	265'	1.57
Piney Glen Farms	6-B	252' CL	Perpendicular	2.10	Rectangle	272'	1.18
Piney Glen Farms	35-A	285'	Perpendicular	3.03	Rectangle	275'	2.17
Piney Glen Farms	13-C	275'	Perpendicular	2.02	Rectangle	280'	1.26
SUBJECT PROPERTY	41-A	289'	Perpendicular	2.50	Rectangle	280'	0.65
Piney Glen Farms	14-C	252' CL	Perpendicular	2.01	Rectangle	285'	1.06
Piney Glen Farms	34-C	308' CL	Perpendicular	2.01	Rectangle	290'	0.85
Piney Glen Farms	7-B	285'	Perpendicular	2.00	Square	300'	1.25
Palatine Subdivision	2-B	284'	Perpendicular	2.00	Irregular	300'	1.00
Piney Glen Farms	23-C	288' CL	Perpendicular	2.08	Rectangle	320'	1.18
Ferris Subdivision	29	300' CL	Parallel	2.10	Irregular	330'	0.35
Ferris Subdivision	27	346'	Parallel	2.10	Rectangle	350'	0.84
Ferris Subdivision	28	346'	Parallel	2.10	Rectangle	360'	0.70
Ferris Subdivision	25	410'	Perpendicular	2.10	Irregular Pie	380'	0.80
Piney Glen Farms	3-A	447'	Radial	2.05	Pie	387'	1.17
Palatine Subdivision	1-B	507' CL	Parallel Corner	2.00	Irregular	395'	1.00
Piney Glen Farms	1-B	410' CL	Perpendicular	2.19	Rectangle	460'	1.06
Piney Glen Farms	23-A	1035' CL	Perpendicular	5.31	2 Corner Lot	940'	2.80

CL= Corner Lot