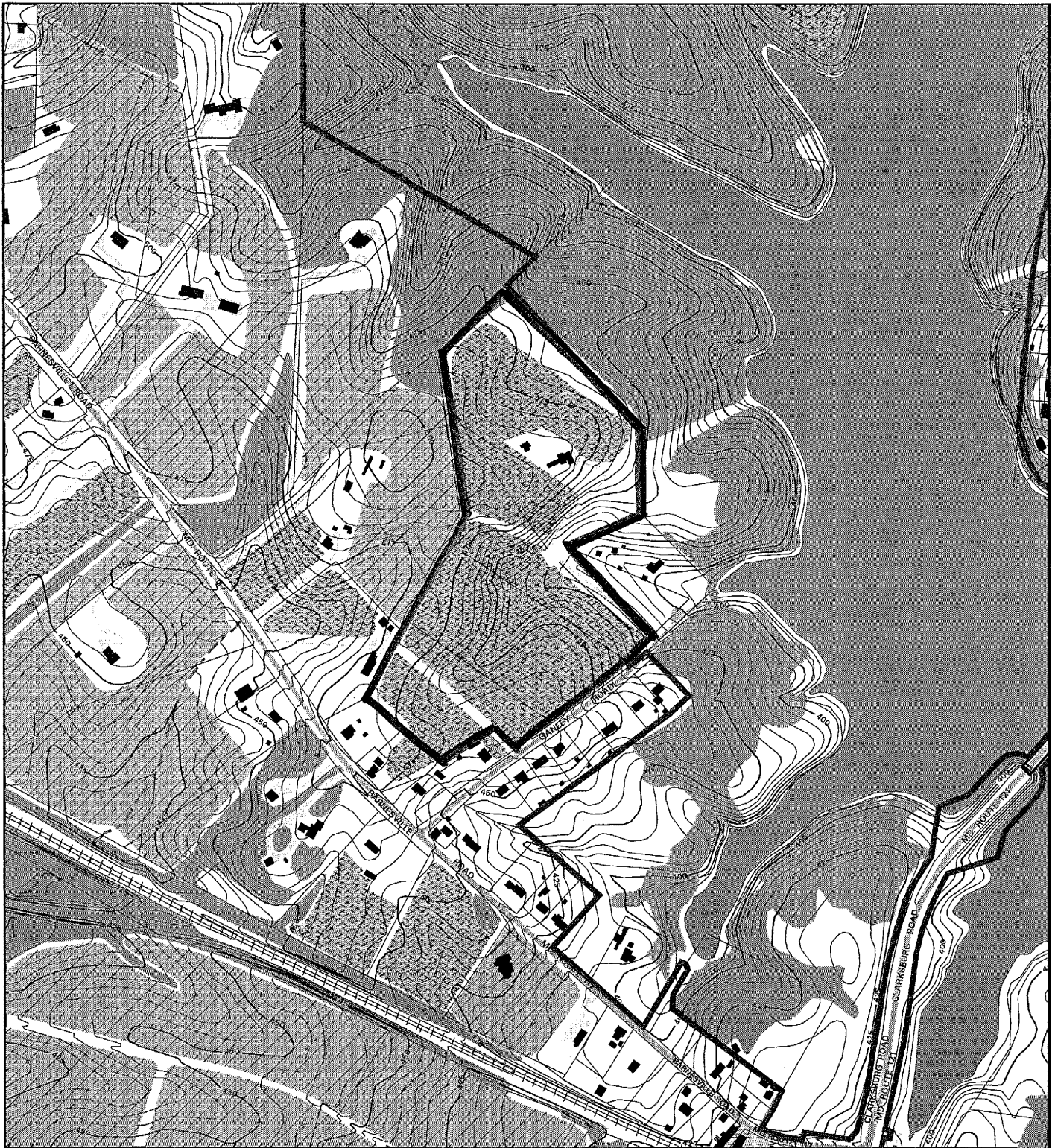


LAWSON PROPERTY (120060530)



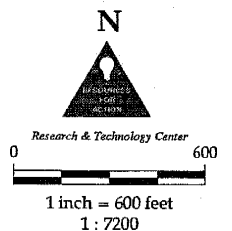
Map compiled on November 09, 2005 at 2:08 PM | Site located on base sheet no - 228NW15

NOTICE

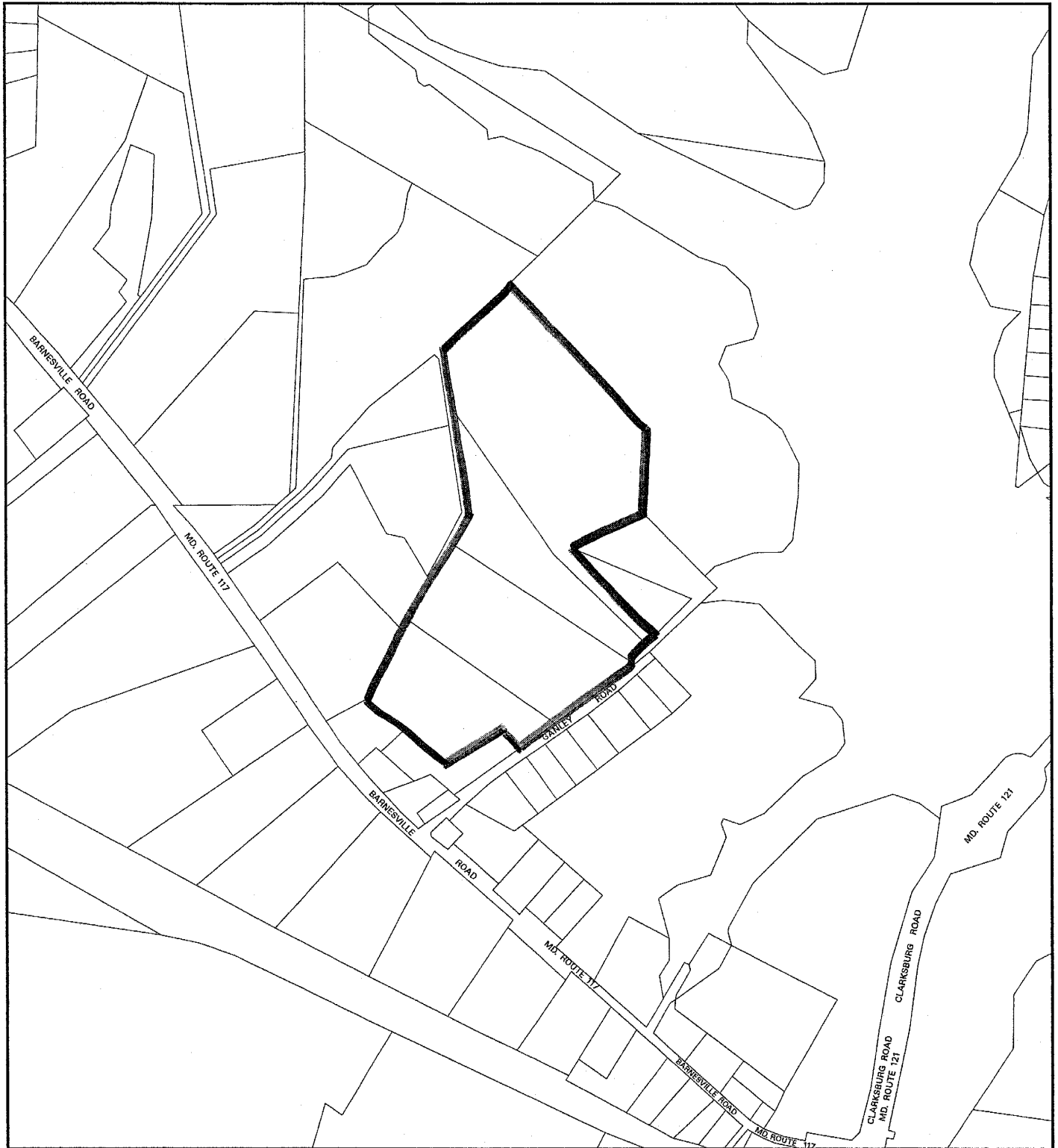
The planimetric, property, and topographic information shown on this map is based on copyrighted Map Products from the Montgomery County Department of Park and Planning of the Maryland National Capital Park and Planning Commission, and may not be copied or reproduced without written permission from M-NCPPC.

Property lines are compiled by adjusting the property lines to topography created from aerial photography and should not be interpreted as actual field surveys. Planimetric features were compiled from 1:14400 scale aerial photography using stereo photogrammetric methods.

This map is created from a variety of data sources, and may not reflect the most current conditions in any one location and may not be completely accurate or up to date. All map features are approximately within five feet of their true location. This map may not be the same as a map of the same area plotted at an earlier time as the data is continuously updated. Use of this map, other than for general planning purposes is not recommended. - Copyright 1998



LAWSON PROPERTY (120060530)



Map compiled on November 09, 2005 at 2:12 PM | Site located on base sheet no - 228NW15

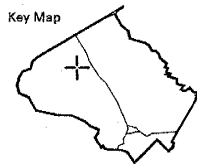
NOTICE

The planimetric, property, and topographic information shown on this map is based on copyrighted Map Products from the Montgomery County Department of Park and Planning of the Maryland -National Capital Park and Planning Commission, and may not be copied or reproduced without written permission from M-NCPPC.

Property lines are compiled by adjusting the property lines to topography created from aerial photography and should not be interpreted as actual field surveys. Planimetric features were compiled from 1:14400 scale aerial photography using stereo photogrammetric methods.

This map is created from a variety of data sources, and may not reflect the most current conditions in any one location and may not be completely accurate or up to date. All map features are approximately within five feet of their true location. This map may not be the same as a map of the same area plotted at an earlier time as the data is continuously updated. Use of this map, other than for general planning purposes is not recommended. - Copyright 1998

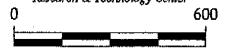
Key Map



N



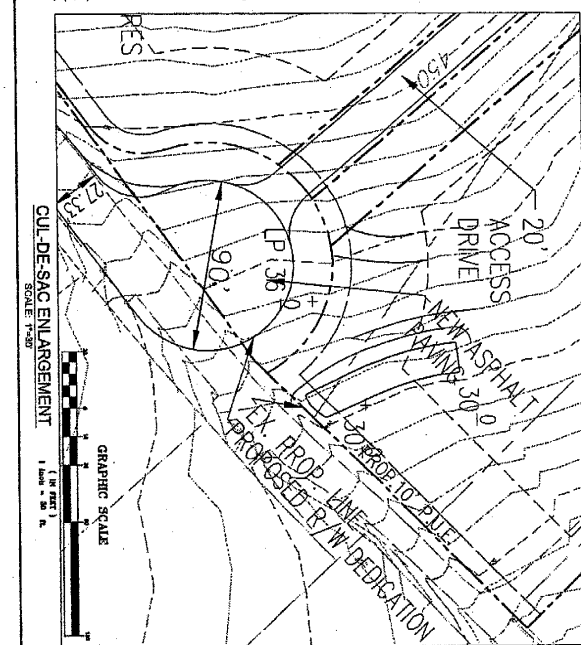
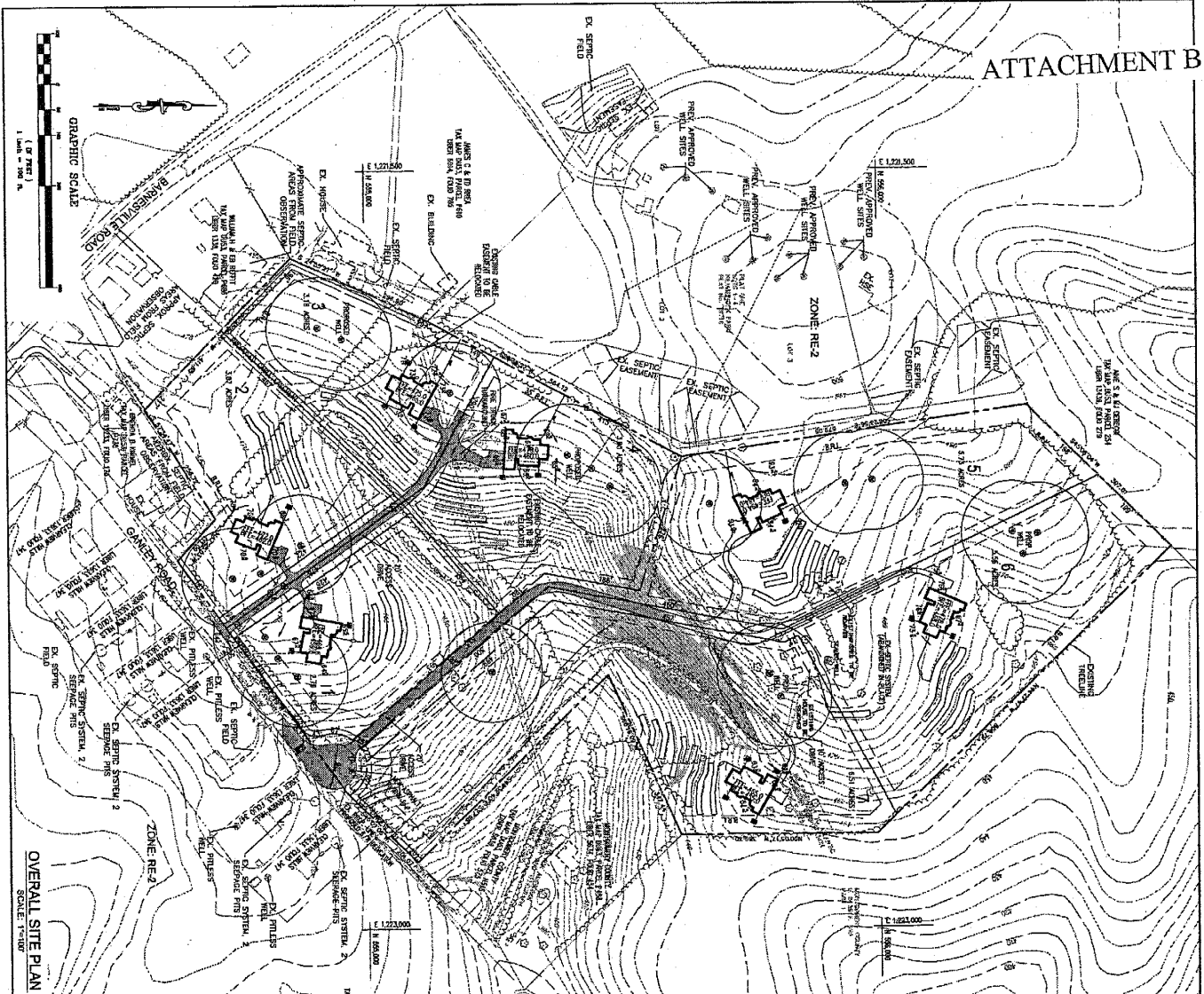
Research & Technology Center



1 inch = 600 feet
1 : 7200

MONTGOMERY COUNTY DEPARTMENT OF PARK AND PLANNING
THE MARYLAND-NATIONAL CAPITAL PARK AND PLANNING COMMISSION

8787 Georgia Avenue - Silver Spring, Maryland 20910-3760

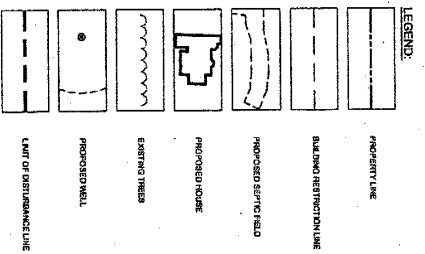


SITE DATA

LOT 1	241,408 SQ. FT.
LOT 2	318,408 SQ. FT.
LOT 3	318,408 SQ. FT.
LOT 4	318,408 SQ. FT.
LOT 5	514,408 SQ. FT.
LOT 6	514,408 SQ. FT.
LOT 7	514,408 SQ. FT.
LOT 8	514,408 SQ. FT.
LOT 9	514,408 SQ. FT.
LOT 10	514,408 SQ. FT.
LOT 11	514,408 SQ. FT.
LOT 12	514,408 SQ. FT.
LOT 13	514,408 SQ. FT.
LOT 14	514,408 SQ. FT.
LOT 15	514,408 SQ. FT.
LOT 16	514,408 SQ. FT.
LOT 17	514,408 SQ. FT.
LOT 18	514,408 SQ. FT.
LOT 19	514,408 SQ. FT.
LOT 20	514,408 SQ. FT.
LOT 21	514,408 SQ. FT.
LOT 22	514,408 SQ. FT.
LOT 23	514,408 SQ. FT.
LOT 24	514,408 SQ. FT.
LOT 25	514,408 SQ. FT.
LOT 26	514,408 SQ. FT.
LOT 27	514,408 SQ. FT.
LOT 28	514,408 SQ. FT.
LOT 29	514,408 SQ. FT.
LOT 30	514,408 SQ. FT.
LOT 31	514,408 SQ. FT.
LOT 32	514,408 SQ. FT.
LOT 33	514,408 SQ. FT.
LOT 34	514,408 SQ. FT.
LOT 35	514,408 SQ. FT.
LOT 36	514,408 SQ. FT.
LOT 37	514,408 SQ. FT.
LOT 38	514,408 SQ. FT.
LOT 39	514,408 SQ. FT.
LOT 40	514,408 SQ. FT.
LOT 41	514,408 SQ. FT.
LOT 42	514,408 SQ. FT.
LOT 43	514,408 SQ. FT.
LOT 44	514,408 SQ. FT.
LOT 45	514,408 SQ. FT.
LOT 46	514,408 SQ. FT.
LOT 47	514,408 SQ. FT.
LOT 48	514,408 SQ. FT.
LOT 49	514,408 SQ. FT.
LOT 50	514,408 SQ. FT.
LOT 51	514,408 SQ. FT.
LOT 52	514,408 SQ. FT.
LOT 53	514,408 SQ. FT.
LOT 54	514,408 SQ. FT.
LOT 55	514,408 SQ. FT.
LOT 56	514,408 SQ. FT.
LOT 57	514,408 SQ. FT.
LOT 58	514,408 SQ. FT.
LOT 59	514,408 SQ. FT.
LOT 60	514,408 SQ. FT.
LOT 61	514,408 SQ. FT.
LOT 62	514,408 SQ. FT.
LOT 63	514,408 SQ. FT.
LOT 64	514,408 SQ. FT.
LOT 65	514,408 SQ. FT.
LOT 66	514,408 SQ. FT.
LOT 67	514,408 SQ. FT.
LOT 68	514,408 SQ. FT.
LOT 69	514,408 SQ. FT.
LOT 70	514,408 SQ. FT.
LOT 71	514,408 SQ. FT.
LOT 72	514,408 SQ. FT.
LOT 73	514,408 SQ. FT.
LOT 74	514,408 SQ. FT.
LOT 75	514,408 SQ. FT.
LOT 76	514,408 SQ. FT.
LOT 77	514,408 SQ. FT.
LOT 78	514,408 SQ. FT.
LOT 79	514,408 SQ. FT.
LOT 80	514,408 SQ. FT.
LOT 81	514,408 SQ. FT.
LOT 82	514,408 SQ. FT.
LOT 83	514,408 SQ. FT.
LOT 84	514,408 SQ. FT.
LOT 85	514,408 SQ. FT.
LOT 86	514,408 SQ. FT.
LOT 87	514,408 SQ. FT.
LOT 88	514,408 SQ. FT.
LOT 89	514,408 SQ. FT.
LOT 90	514,408 SQ. FT.
LOT 91	514,408 SQ. FT.
LOT 92	514,408 SQ. FT.
LOT 93	514,408 SQ. FT.
LOT 94	514,408 SQ. FT.
LOT 95	514,408 SQ. FT.
LOT 96	514,408 SQ. FT.
LOT 97	514,408 SQ. FT.
LOT 98	514,408 SQ. FT.
LOT 99	514,408 SQ. FT.
LOT 100	514,408 SQ. FT.

LITTLE SENECA LAKE

- GENERAL NOTES:**
1. FOUNDARY INFORMATION IS PROVIDED BY PATTON HARRIS RUST & ASSOCIATES, INC.
 2. TOPOGRAPHY INFORMATION PROVIDED BY PATTON HARRIS RUST & ASSOCIATES, INC. CONTOUR INTERVAL: 2'
 3. PROPERTY IS ZONED RE-2. BUILDING SETBACKS: SIDE: 17' 35" BOTH SIDES REAR: 35'
 4. TOTAL SITE AREA IS 50.98 ACRES.
 5. TAX MAP DUS3, PARCEL P355, P508, P617, P668.
 6. USE: SINGLE FAMILY DETACHED.
 7. LOTS ARE TO BE SERVED BY WELL & SEPTIC.
 8. MAX. LOT COVERAGE: 25%
 9. MAX. BUILDING HEIGHT: 50'



PRELIMINARY PLAN

LAWSON PROPERTY
TAX MAP DUS3, PARCEL P355, P508, P617, P668
15115 GABLEY ROAD
BOYDS, MD 20841

2ND ELECTION DISTRICT
MONTGOMERY COUNTY, MARYLAND

PPRA

DESIGNED BY: JPP
DRAWN BY: JPP
SCALE: AS SHOWN
SHEET 1 OF 1

No.	REVISION	DATE	BY
1	REVISE GABLEY ROAD CUI-DE-SAC	11/27/2017	JPP
2	REVISE GABLEY ROAD CUI-DE-SAC	11/27/2017	JPP
3	REVISE LOT LINE BETWEEN LOTS 1 & 2	11/27/2017	JPP

OWNER: JAMES LAWSON
15115 GABLEY ROAD
BOYDS, MD 20841

DEVELOPER: HOLLY RIDGE DEVELOPMENT, LLC
CHRIS PETRELLA
18015 GEORGIA AVENUE, 2ND FLOOR
OLNEY, MARYLAND 20832

Patton Harris Rust & Associates, pc
Engineers, Surveyors, Planners, Landscape Architects.
12850 Middlebrook Road, Suite 205, Germantown, MD 20876
T 301.228.4320 F 301.228.4319

