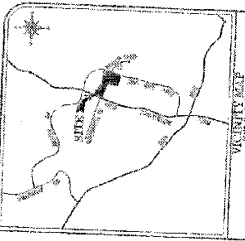


Attachment B



SITE DATA

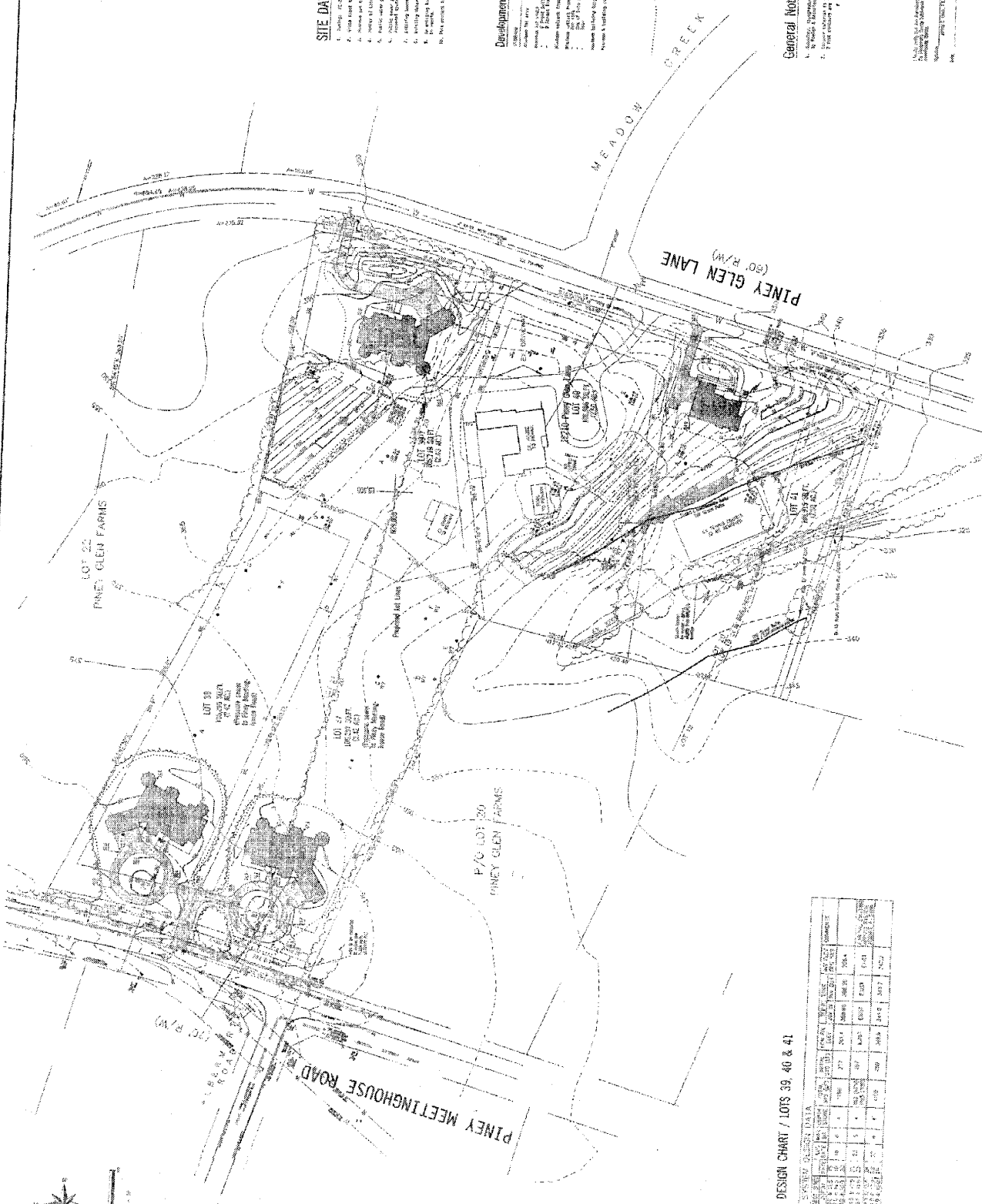
1. Zoning: R-2
2. Project Name: PINEY GLEN FARMS
3. Address: 10000 Valley Center Road, Valley Center, MO 64689
4. Property Owner: PINEY GLEN FARMS, INC.
5. Project Description: 100 Residential Units
6. Projected Population: 250
7. Projected Daily Water Use: 10,000 Gallons
8. Projected Daily Sewer Flow: 10,000 Gallons
9. Projected Peak Hourly Sewer Flow: 1,000 Gallons
10. Projected Peak Hourly Water Use: 1,000 Gallons
11. Projected Peak Hourly Sewer Flow: 1,000 Gallons
12. Projected Peak Hourly Water Use: 1,000 Gallons
13. Projected Peak Hourly Sewer Flow: 1,000 Gallons
14. Projected Peak Hourly Water Use: 1,000 Gallons

Development Standards Per R-2 Zoning

Category	Standard
Lot Area	10,000 sq. ft.
Lot Coverage	30%
Setbacks	5 feet
Height	35 feet
Use	Residential Single-Family
Other	See R-2 Zoning Ordinance

General Notes

1. All work shall be in accordance with the latest editions of the International Building Code and the International Plumbing Code.
2. All materials shall be of standard quality and shall be approved by the local health department.
3. All work shall be completed within the specified time frame.
4. All work shall be done in accordance with the local health department's requirements.



SEPTIC DESIGN CHART / LOTS 39, 40 & 41

Lot No.	Area (sq. ft.)	Volume (gallons)	Flow (gpm)	Notes
39	10,000	10,000	100	
40	10,000	10,000	100	
41	10,000	10,000	100	



SHEET NO. 1 OF 1
 DATE: 10/15/2024
 PROJECT: PINEY GLEN FARMS
 CLIENT: PINEY GLEN FARMS, INC.
 ADDRESS: 10000 VALLEY CENTER ROAD, VALLEY CENTER, MO 64689
 CONTACT: [REDACTED]

SITE SOLUTIONS, INC.
 10000 VALLEY CENTER ROAD, VALLEY CENTER, MO 64689
 (816) 451-4514
 www.sitesolutionsinc.com

2

**PINEY GLEN FARMS
NEIGHBORHOOD DATA TABLE**

Neighborhood Data Table with Steam Valley Buffers Shown

<u>Subdivision</u>	<u>Lot/Block No.</u>	<u>Frontage</u>	<u>Alignment</u>	<u>Lot Size</u>	<u>Shape</u>	<u>Width at BRL</u>	<u>Buildable Area</u>
Piney Glen Farms	34-C	308' CL	Perpendicular	2.01	Rectangle	290'	1.15
Piney Glen Farms	26-C	140' CL	Perpendicular	2.70	Rectangle	195'	1.58
Piney Glen Farms	25-C	226'	Perpendicular	2.51	Rectangle	220'	1.57
Piney Glen Farms	24-C	153'	Perpendicular	2.78	Rectangle	160'	1.81
Piney Glen Farms	23-C	288' CL	Perpendicular	2.08	Rectangle	320'	1.18
Piney Glen Farms	14-C	252' CL	Perpendicular	2.01	Rectangle	285'	1.06
Piney Glen Farms	13-C	275'	Perpendicular	2.02	Rectangle	280'	1.26
Piney Glen Farms	12-C	210'	Perpendicular	2.13	Rectangle	225'	1.40
Piney Glen Farms	11-C	185' CL	Perpendicular	2.05	Rectangle	230'	1.07
Piney Glen Farms	6-C	191' CL	Perpendicular	2.07	Rectangle	210'	1.02
Piney Glen Farms	5-C	165' CL	Perpendicular	2.04	Rectangle	190'	1.12
Piney Glen Farms	1-B	410' CL	Perpendicular	2.19	Rectangle	460'	1.16
Piney Glen Farms	20-B	233'	Perpendicular	2.00	Rectangle	240'	1.27
Piney Glen Farms	12-B	190'	Perpendicular	2.47	Rectangle	230'	1.49
Piney Glen Farms	7-B	285'	Perpendicular	2.00	Square	300'	1.25
Piney Glen Farms	6-B	252' CL	Perpendicular	2.10	Rectangle	272'	1.18
Piney Glen Farms	1-A	192' CL	Perpendicular	2.06	Rectangle	230'	1.29
Piney Glen Farms	2-A	266'	Perpendicular	2.02	Rectangle	255'	1.32
Piney Glen Farms	3-A	447'	Radial	2.05	Pie	387'	1.17
Piney Glen Farms	4-A	242'	Perpendicular	2.10	Rectangle	230'	1.40
Piney Glen Farms	5-A	248'	Perpendicular	2.00	Rectangle	237'	1.36
Piney Glen Farms	6-A	245'	Perpendicular	2.04	Rectangle	237'	1.35
Piney Glen Farms	7-A	225'	Perpendicular	2.01	Rectangle	224'	1.33
Piney Glen Farms	8-A	212'	Perpendicular	2.03	Rectangle	221'	1.34
Piney Glen Farms	14	202'	Perpendicular	2.04	Rectangle	207'	1.36
Piney Glen Farms	27-A	203'	Perpendicular	2.04	Rectangle	194'	1.36
Piney Glen Farms	24-A	219'	Perpendicular	2.56	Rectangle	224'	1.30
Piney Glen Farms	25-A	222'	Perpendicular	2.20	Rectangle	226'	1.10
SUBJECT PROPERTY	37-A	185'	Perpendicular	2.42	Rectangle	185'	1.67
SUBJECT PROPERTY	38-A	191'	Perpendicular	2.42	Rectangle	185'	1.65
SUBJECT PROPERTY	39-A	277'	Perpendicular	2.43	Rectangle	265'	1.57
SUBJECT PROPERTY	40-A	230'	Perpendicular	2.50	Rectangle	240'	1.76
SUBJECT PROPERTY	41-A	289'	Perpendicular	2.50	Rectangle	280'	1.74
Piney Glen Farms	22-A	236'	Perpendicular	5.00	Rectangle	225'	3.50
Piney Glen Farms	23-A	1035' CL	Perpendicular	5.31	2 Corner Lot	940'	3.00
Piney Glen Farms	18-A	210'	Perpendicular	2.63	Rectangle	210'	1.84
Piney Glen Farms	17-A	207'	Perpendicular	2.63	Rectangle	205'	1.84
Piney Glen Farms	16-A	197'	Perpendicular	2.55	Rectangle	200'	2.18
Piney Glen Farms	15-A	190'	Perpendicular	3.08	Rectangle	205'	1.95
Piney Glen Farms	36-A	180'	Perpendicular	2.55	Rectangle	180'	1.75
Piney Glen Farms	35-A	285'	Perpendicular	3.03	Rectangle	275'	2.17
Piney Glen Farms	34-A	211'	Perpendicular	2.67	Rectangle	215'	1.83
Ferris Subdivision	25	410'	Perpendicular	2.10	Irregular Pie	380'	1.24
Ferris Subdivision	20	25'	Perpendicular	2.20	Pan Handle	150'	1.18
Ferris Subdivision	26	180'	Perpendicular	2.00	Irregular	250'	1.27
Ferris Subdivision	27	346'	Parallel	2.10	Rectangle	350'	1.23
Ferris Subdivision	28	346'	Parallel	2.10	Rectangle	360'	0.90
Ferris Subdivision	29	300' CL	Parallel	2.10	Irregular	330'	0.35
Ferris Subdivision	16	325' CL	Perpendicular	2.00	Rectangle	225'	0.80
Ferris Subdivision	17	234'	Perpendicular	2.00	Rectangle	230'	1.21
Palatine Subdivision	1-A	158' CL	Parallel Corner	2.00	Irregular	184'	1.15
Palatine Subdivision	1-B	507' CL	Parallel Corner	2.00	Irregular	395'	1.00
Palatine Subdivision	2-B	284'	Perpendicular	2.00	Irregular	300'	1.00
Palatine Subdivision	3-B	143'	Perpendicular	2.00	Irregular	154'	1.30
Palatine Subdivision	4-B	120'	Perpendicular	2.00	Irregular	130'	1.30

CL= Corner Lot

**PINEY GLEN FARMS
NEIGHBORHOOD DATA TABLE**

Neighborhood Data Table with Steam Valley Buffers Shown

Neighborhood Rank by Frontage

<u>Subdivision</u>	<u>Lot/Block No.</u>	<u>Frontage</u>	<u>Alignment</u>	<u>Lot Size</u>	<u>Shape</u>	<u>Width at BRL</u>	<u>Buildable Area</u>
Ferris Subdivision	20	25'	Perpendicular	2.20	Pan Handle	150'	1.18
Palatine Subdivision	4-B	120'	Perpendicular	2.00	Irregular	130'	1.30
Piney Glen Farms	26-C	140' CL	Perpendicular	2.70	Rectangle	195'	1.58
Palatine Subdivision	3-B	143'	Perpendicular	2.00	Irregular	154'	1.30
Piney Glen farms	24-C	153'	Perpendicular	2.78	Rectangle	160'	1.81
Palatine Subdivision	1-A	158' CL	Parallel Corner	2.00	Irregular	184'	1.15
Piney Glen Farms	5-C	165' CL	Perpendicular	2.04	Rectangle	190'	1.12
Ferris Subdivision	26	180'	Perpendicular	2.00	Irregular	250'	1.27
Piney Glen Farms	36-A	180'	Perpendicular	2.55	Rectangle	180'	1.75
SUBJECT PROPERTY	37-A	185'	Perpendicular	2.42	Rectangle	185'	1.67
Piney Glen Farms	11-C	185' CL	Perpendicular	2.05	Rectangle	230'	1.07
Piney Glen Farms	15-A	190'	Perpendicular	3.08	Rectangle	205'	1.95
Piney Glen Farms	12-B	190'	Perpendicular	2.47	Rectangle	230'	1.49
SUBJECT PROPERTY	38-A	191'	Perpendicular	2.42	Rectangle	185'	1.65
Piney Glen Farms	6-C	191' CL	Perpendicular	2.07	Rectangle	210'	1.02
Piney Glen Farms	1-A	192' CL	Perpendicular	2.06	Rectangle	230'	1.29
Piney Glen Farms	16-A	197'	Perpendicular	2.55	Rectangle	200'	2.18
Piney Glen Farms	14	202'	Perpendicular	2.04	Rectangle	207'	1.36
Piney Glen Farms	27-A	203'	Perpendicular	2.04	Rectangle	194'	1.36
Piney Glen Farms	17-A	207'	Perpendicular	2.63	Rectangle	205'	1.84
Piney Glen Farms	18-A	210'	Perpendicular	2.63	Rectangle	210'	1.84
Piney Glen Farms	12-C	210'	Perpendicular	2.13	Rectangle	225'	1.40
Piney Glen Farms	34-A	211'	Perpendicular	2.67	Rectangle	215'	1.83
Piney Glen Farms	8-A	212'	Perpendicular	2.03	Rectangle	221'	1.34
Piney Glen Farms	24-A	219'	Perpendicular	2.56	Rectangle	224'	1.30
Piney Glen Farms	25-A	222'	Perpendicular	2.20	Rectangle	226'	1.10
Piney Glen Farms	7-A	225'	Perpendicular	2.01	Rectangle	224'	1.33
Piney Glen Farms	25-C	226'	Perpendicular	2.51	Rectangle	220'	1.57
SUBJECT PROPERTY	40-A	230'	Perpendicular	2.50	Rectangle	240'	1.76
Piney Glen Farms	20-B	233'	Perpendicular	2.00	Rectangle	240'	1.27
Ferris Subdivision	17	234'	Perpendicular	2.00	Rectangle	230'	1.21
Piney Glen Farms	22-A	236'	Perpendicular	5.00	Rectangle	225'	3.50
Piney Glen Farms	4-A	242'	Perpendicular	2.10	Rectangle	230'	1.40
Piney Glen Farms	6-A	245'	Perpendicular	2.04	Rectangle	237'	1.35
Piney Glen Farms	5-A	248'	Perpendicular	2.00	Rectangle	237'	1.36
Piney Glen Farms	6-B	252' CL	Perpendicular	2.10	Rectangle	272'	1.18
Piney Glen Farms	14-C	252' CL	Perpendicular	2.01	Rectangle	285'	1.06
Piney Glen Farms	2-A	266'	Perpendicular	2.02	Rectangle	255'	1.32
Piney Glen Farms	13-C	275'	Perpendicular	2.02	Rectangle	280'	1.26
SUBJECT PROPERTY	39-A	277'	Perpendicular	2.43	Rectangle	265'	1.57
Palatine Subdivision	2-B	284'	Perpendicular	2.00	Irregular	300'	1.00
Piney Glen Farms	7-B	285'	Perpendicular	2.00	Square	300'	1.25
Piney Glen Farms	35-A	285'	Perpendicular	3.03	Rectangle	275'	2.17
Piney Glen Farms	23-C	288' CL	Perpendicular	2.08	Rectangle	320'	1.18
SUBJECT PROPERTY	41-A	289'	Perpendicular	2.50	Rectangle	280'	1.74
Ferris Subdivision	29	300' CL	Parallel	2.10	Irregular	330'	0.35
Piney Glen Farms	34-C	308' CL	Perpendicular	2.01	Rectangle	290'	1.15
Ferris Subdivision	16	325' CL	Perpendicular	2.00	Rectangle	225'	0.80
Ferris Subdivision	27	346'	Parallel	2.10	Rectangle	350'	1.23
Ferris Subdivision	28	346'	Parallel	2.10	Rectangle	360'	0.90
Ferris Subdivision	25	410'	Perpendicular	2.10	Irregular Pie	380'	1.24
Piney Glen Farms	1-B	410' CL	Perpendicular	2.19	Rectangle	460'	1.16
Piney Glen Farms	3-A	447'	Radial	2.05	Pie	387'	1.17
Palatine Subdivision	1-B	507' CL	Parallel Corner	2.00	Irregular	395'	1.00
Piney Glen Farms	23-A	1035' CL	Perpendicular	5.31	2 Corner Lot	940'	3.00

CL= Corner Lot

**PINEY GLEN FARMS
NEIGHBORHOOD DATA TABLE**

Neighborhood Data Table with Steam Valley Buffers Shown

Neighborhood Rank by Lot Size

<u>Subdivision</u>	<u>Lot/Block No.</u>	<u>Frontage</u>	<u>Alignment</u>	<u>Lot Size</u>	<u>Shape</u>	<u>Width at BRL</u>	<u>Buildable Area</u>
Palatine Subdivision	1-A	158' CL	Parallel Corner	2.00	Irregular	184'	1.15
Palatine Subdivision	4-B	120'	Perpendicular	2.00	Irregular	130'	1.30
Palatine Subdivision	3-B	143'	Perpendicular	2.00	Irregular	154'	1.30
Palatine Subdivision	2-B	284'	Perpendicular	2.00	Irregular	300'	1.00
Ferris Subdivision	26	180'	Perpendicular	2.00	Irregular	250'	1.27
Palatine Subdivision	1-B	507' CL	Parallel Corner	2.00	Irregular	395'	1.00
Piney Glen Farms	7-B	285'	Perpendicular	2.00	Square	300'	1.25
Ferris Subdivision	16	325' CL	Perpendicular	2.00	Rectangle	225'	0.80
Piney Glen Farms	5-A	248'	Perpendicular	2.00	Rectangle	237'	1.36
Ferris Subdivision	17	234'	Perpendicular	2.00	Rectangle	230'	1.21
Piney Glen Farms	20-B	233'	Perpendicular	2.00	Rectangle	240'	1.27
Piney Glen Farms	7-A	225'	Perpendicular	2.01	Rectangle	224'	1.33
Piney Glen Farms	34-C	308' CL	Perpendicular	2.01	Rectangle	290'	1.15
Piney Glen Farms	14-C	252' CL	Perpendicular	2.01	Rectangle	285'	1.06
Piney Glen Farms	13-C	275'	Perpendicular	2.02	Rectangle	280'	1.26
Piney Glen Farms	2-A	266'	Perpendicular	2.02	Rectangle	255'	1.32
Piney Glen Farms	8-A	212'	Perpendicular	2.03	Rectangle	221'	1.34
Piney Glen Farms	5-C	165' CL	Perpendicular	2.04	Rectangle	190'	1.12
Piney Glen Farms	14	202'	Perpendicular	2.04	Rectangle	207'	1.36
Piney Glen Farms	27-A	203'	Perpendicular	2.04	Rectangle	194'	1.36
Piney Glen Farms	6-A	245'	Perpendicular	2.04	Rectangle	237'	1.35
Piney Glen Farms	3-A	447'	Radial	2.05	Pie	387'	1.17
Piney Glen Farms	11-C	185' CL	Perpendicular	2.05	Rectangle	230'	1.07
Piney Glen Farms	1-A	192' CL	Perpendicular	2.06	Rectangle	230'	1.29
Piney Glen Farms	6-C	191' CL	Perpendicular	2.07	Rectangle	210'	1.02
Piney Glen Farms	23-C	288' CL	Perpendicular	2.08	Rectangle	320'	1.18
Ferris Subdivision	25	410'	Perpendicular	2.10	Irregular Pie	380'	1.24
Piney Glen Farms	4-A	242'	Perpendicular	2.10	Rectangle	230'	1.40
Piney Glen Farms	6-B	252' CL	Perpendicular	2.10	Rectangle	272'	1.18
Ferris Subdivision	29	300' CL	Parallel	2.10	Irregular	330'	0.35
Ferris Subdivision	28	346'	Parallel	2.10	Rectangle	360'	0.90
Ferris Subdivision	27	346'	Parallel	2.10	Rectangle	350'	1.23
Piney Glen Farms	12-C	210'	Perpendicular	2.13	Rectangle	225'	1.40
Piney Glen Farms	1-B	410' CL	Perpendicular	2.19	Rectangle	460'	1.16
Ferris Subdivision	20	25'	Perpendicular	2.20	Pan Handle	150'	1.18
Piney Glen Farms	25-A	222'	Perpendicular	2.20	Rectangle	226'	1.10
SUBJECT PROPERTY	37-A	185'	Perpendicular	2.42	Rectangle	185'	1.67
SUBJECT PROPERTY	38-A	191'	Perpendicular	2.42	Rectangle	185'	1.65
SUBJECT PROPERTY	39-A	277'	Perpendicular	2.43	Rectangle	265'	1.57
Piney Glen Farms	12-B	190'	Perpendicular	2.47	Rectangle	230'	1.49
SUBJECT PROPERTY	41-A	289'	Perpendicular	2.50	Rectangle	280'	1.74
SUBJECT PROPERTY	40-A	230'	Perpendicular	2.50	Rectangle	240'	1.76
Piney Glen Farms	25-C	226'	Perpendicular	2.51	Rectangle	220'	1.57
Piney Glen Farms	16-A	197'	Perpendicular	2.55	Rectangle	200'	2.18
Piney Glen Farms	36-A	180'	Perpendicular	2.55	Rectangle	180'	1.75
Piney Glen Farms	24-A	219'	Perpendicular	2.56	Rectangle	224'	1.30
Piney Glen Farms	18-A	210'	Perpendicular	2.63	Rectangle	210'	1.84
Piney Glen Farms	17-A	207'	Perpendicular	2.63	Rectangle	205'	1.84
Piney Glen Farms	34-A	211'	Perpendicular	2.67	Rectangle	215'	1.83
Piney Glen Farms	26-C	140' CL	Perpendicular	2.70	Rectangle	195'	1.58
Piney Glen farms	24-C	153'	Perpendicular	2.78	Rectangle	160'	1.81
Piney Glen Farms	35-A	285'	Perpendicular	3.03	Rectangle	275'	2.17
Piney Glen Farms	15-A	190'	Perpendicular	3.08	Rectangle	205'	1.95
Piney Glen Farms	22-A	236'	Perpendicular	5.00	Rectangle	225'	3.50
Piney Glen Farms	23-A	1035' CL	Perpendicular	5.31	2 Corner Lot	940'	3.00

CL= Corner Lot

(6)

**PINEY GLEN FARMS
NEIGHBORHOOD DATA TABLE**

Neighborhood Data Table with Steam Valley Buffers Shown

Neighborhood Rank by Width at BRL

<u>Subdivision</u>	<u>Lot/Block No.</u>	<u>Frontage</u>	<u>Alignment</u>	<u>Lot Size</u>	<u>Shape</u>	<u>Width at BRL</u>	<u>Buildable Area</u>
Palatine Subdivision	4-B	120'	Perpendicular	2.00	Irregular	130'	1.30
Ferris Subdivision	20	25'	Perpendicular	2.20	Pan Handle	150'	1.18
Palatine Subdivision	3-B	143'	Perpendicular	2.00	Irregular	154'	1.30
Piney Glen farms	24-C	153'	Perpendicular	2.78	Rectangle	160'	1.81
Piney Glen Farms	36-A	180'	Perpendicular	2.55	Rectangle	180'	1.75
Palatine Subdivision	1-A	158' CL	Parallel Corner	2.00	Irregular	184'	1.15
SUBJECT PROPERTY	38-A	191'	Perpendicular	2.42	Rectangle	185'	1.65
SUBJECT PROPERTY	37-A	185'	Perpendicular	2.42	Rectangle	185'	1.67
Piney Glen Farms	5-C	165' CL	Perpendicular	2.04	Rectangle	190'	1.12
Piney Glen Farms	27-A	203'	Perpendicular	2.04	Rectangle	194'	1.36
Piney Glen Farms	26-C	140' CL	Perpendicular	2.70	Rectangle	195'	1.58
Piney Glen Farms	16-A	197'	Perpendicular	2.55	Rectangle	200'	2.18
Piney Glen Farms	17-A	207'	Perpendicular	2.63	Rectangle	205'	1.84
Piney Glen Farms	15-A	190'	Perpendicular	3.08	Rectangle	205'	1.95
Piney Glen Farms	14	202'	Perpendicular	2.04	Rectangle	207'	1.36
Piney Glen Farms	6-C	191' CL	Perpendicular	2.07	Rectangle	210'	1.02
Piney Glen Farms	18-A	210'	Perpendicular	2.63	Rectangle	210'	1.84
Piney Glen Farms	34-A	211'	Perpendicular	2.67	Rectangle	215'	1.83
Piney Glen Farms	25-C	226'	Perpendicular	2.51	Rectangle	220'	1.57
Piney Glen Farms	8-A	212'	Perpendicular	2.03	Rectangle	221'	1.34
Piney Glen Farms	24-A	219'	Perpendicular	2.56	Rectangle	224'	1.30
Piney Glen Farms	7-A	225'	Perpendicular	2.01	Rectangle	224'	1.33
Piney Glen Farms	22-A	236'	Perpendicular	5.00	Rectangle	225'	3.50
Piney Glen Farms	12-C	210'	Perpendicular	2.13	Rectangle	225'	1.40
Ferris Subdivision	16	325' CL	Perpendicular	2.00	Rectangle	225'	0.80
Piney Glen Farms	25-A	222'	Perpendicular	2.20	Rectangle	226'	1.10
Ferris Subdivision	17	234'	Perpendicular	2.00	Rectangle	230'	1.21
Piney Glen Farms	11-C	185' CL	Perpendicular	2.05	Rectangle	230'	1.07
Piney Glen Farms	4-A	242'	Perpendicular	2.10	Rectangle	230'	1.40
Piney Glen Farms	12-B	190'	Perpendicular	2.47	Rectangle	230'	1.49
Piney Glen Farms	1-A	192' CL	Perpendicular	2.06	Rectangle	230'	1.29
Piney Glen Farms	6-A	245'	Perpendicular	2.04	Rectangle	237'	1.35
Piney Glen Farms	5-A	248'	Perpendicular	2.00	Rectangle	237'	1.36
SUBJECT PROPERTY	40-A	230'	Perpendicular	2.50	Rectangle	240'	1.76
Piney Glen Farms	20-B	233'	Perpendicular	2.00	Rectangle	240'	1.27
Ferris Subdivision	26	180'	Perpendicular	2.00	Irregular	250'	1.27
Piney Glen Farms	2-A	266'	Perpendicular	2.02	Rectangle	255'	1.32
SUBJECT PROPERTY	39-A	277'	Perpendicular	2.43	Rectangle	265'	1.57
Piney Glen Farms	6-B	252' CL	Perpendicular	2.10	Rectangle	272'	1.18
Piney Glen Farms	35-A	285'	Perpendicular	3.03	Rectangle	275'	2.17
Piney Glen Farms	13-C	275'	Perpendicular	2.02	Rectangle	280'	1.26
SUBJECT PROPERTY	41-A	289'	Perpendicular	2.50	Rectangle	280'	1.74
Piney Glen Farms	14-C	252' CL	Perpendicular	2.01	Rectangle	285'	1.06
Piney Glen Farms	34-C	308' CL	Perpendicular	2.01	Rectangle	290'	1.15
Piney Glen Farms	7-B	285'	Perpendicular	2.00	Square	300'	1.25
Palatine Subdivision	2-B	284'	Perpendicular	2.00	Irregular	300'	1.00
Piney Glen Farms	23-C	288' CL	Perpendicular	2.08	Rectangle	320'	1.18
Ferris Subdivision	29	300' CL	Parallel	2.10	Irregular	330'	0.35
Ferris Subdivision	27	346'	Parallel	2.10	Rectangle	350'	1.23
Ferris Subdivision	28	346'	Parallel	2.10	Rectangle	360'	0.90
Ferris Subdivision	25	410'	Perpendicular	2.10	Irregular Pie	380'	1.24
Piney Glen Farms	3-A	447'	Radial	2.05	Pie	387'	1.17
Palatine Subdivision	1-B	507' CL	Parallel Corner	2.00	Irregular	395'	1.00
Piney Glen Farms	1-B	410' CL	Perpendicular	2.19	Rectangle	460'	1.16
Piney Glen Farms	23-A	1035' CL	Perpendicular	5.31	2 Corner Lot	940'	3.00

CL= Corner Lot

**PINEY GLEN FARMS
NEIGHBORHOOD DATA TABLE**

Neighborhood Data Table with Steam Valley Buffers Shown

Neighborhood Rank by Buildable Area

<u>Subdivision</u>	<u>Lot/Block No.</u>	<u>Frontage</u>	<u>Alignment</u>	<u>Lot Size</u>	<u>Shape</u>	<u>Width at BRL</u>	<u>Buildable Area</u>
Ferris Subdivision	29	300' CL	Parallel	2.10	Irregular	330'	0.35
Ferris Subdivision	16	325' CL	Perpendicular	2.00	Rectangle	225'	0.80
Ferris Subdivision	28	346'	Parallel	2.10	Rectangle	360'	0.90
Palatine Subdivision	1-B	507' CL	Parallel Corner	2.00	Irregular	395'	1.00
Palatine Subdivision	2-B	284'	Perpendicular	2.00	Irregular	300'	1.00
Piney Glen Farms	6-C	191' CL	Perpendicular	2.07	Rectangle	210'	1.02
Piney Glen Farms	14-C	252' CL	Perpendicular	2.01	Rectangle	285'	1.06
Piney Glen Farms	11-C	185' CL	Perpendicular	2.05	Rectangle	230'	1.07
Piney Glen Farms	25-A	222'	Perpendicular	2.20	Rectangle	226'	1.10
Piney Glen Farms	5-C	165' CL	Perpendicular	2.04	Rectangle	190'	1.12
Piney Glen Farms	34-C	308' CL	Perpendicular	2.01	Rectangle	290'	1.15
Palatine Subdivision	1-A	158' CL	Parallel Corner	2.00	Irregular	184'	1.15
Piney Glen Farms	1-B	410' CL	Perpendicular	2.19	Rectangle	460'	1.16
Piney Glen Farms	3-A	447'	Radial	2.05	Pie	387'	1.17
Piney Glen Farms	23-C	288' CL	Perpendicular	2.08	Rectangle	320'	1.18
Piney Glen Farms	6-B	252' CL	Perpendicular	2.10	Rectangle	272'	1.18
Ferris Subdivision	20	25'	Perpendicular	2.20	Pan Handle	150'	1.18
Ferris Subdivision	17	234'	Perpendicular	2.00	Rectangle	230'	1.21
Ferris Subdivision	27	346'	Parallel	2.10	Rectangle	350'	1.23
Ferris Subdivision	25	410'	Perpendicular	2.10	Irregular Pie	380'	1.24
Piney Glen Farms	7-B	285'	Perpendicular	2.00	Square	300'	1.25
Piney Glen Farms	13-C	275'	Perpendicular	2.02	Rectangle	280'	1.26
Piney Glen Farms	20-B	233'	Perpendicular	2.00	Rectangle	240'	1.27
Ferris Subdivision	26	180'	Perpendicular	2.00	Irregular	250'	1.27
Piney Glen Farms	1-A	192' CL	Perpendicular	2.06	Rectangle	230'	1.29
Piney Glen Farms	24-A	219'	Perpendicular	2.56	Rectangle	224'	1.30
Palatine Subdivision	3-B	143'	Perpendicular	2.00	Irregular	154'	1.30
Palatine Subdivision	4-B	120'	Perpendicular	2.00	Irregular	130'	1.30
Piney Glen Farms	2-A	266'	Perpendicular	2.02	Rectangle	255'	1.32
Piney Glen Farms	7-A	225'	Perpendicular	2.01	Rectangle	224'	1.33
Piney Glen Farms	8-A	212'	Perpendicular	2.03	Rectangle	221'	1.34
Piney Glen Farms	6-A	245'	Perpendicular	2.04	Rectangle	237'	1.35
Piney Glen Farms	14	202'	Perpendicular	2.04	Rectangle	207'	1.36
Piney Glen Farms	27-A	203'	Perpendicular	2.04	Rectangle	194'	1.36
Piney Glen Farms	5-A	248'	Perpendicular	2.00	Rectangle	237'	1.36
Piney Glen Farms	12-C	210'	Perpendicular	2.13	Rectangle	225'	1.40
Piney Glen Farms	4-A	242'	Perpendicular	2.10	Rectangle	230'	1.40
Piney Glen Farms	12-B	190'	Perpendicular	2.47	Rectangle	230'	1.49
Piney Glen Farms	25-C	226'	Perpendicular	2.51	Rectangle	220'	1.57
SUBJECT PROPERTY	39-A	277'	Perpendicular	2.43	Rectangle	265'	1.57
Piney Glen Farms	26-C	140' CL	Perpendicular	2.70	Rectangle	195'	1.58
SUBJECT PROPERTY	38-A	191'	Perpendicular	2.42	Rectangle	185'	1.65
SUBJECT PROPERTY	37-A	185'	Perpendicular	2.42	Rectangle	185'	1.67
SUBJECT PROPERTY	41-A	289'	Perpendicular	2.50	Rectangle	280'	1.74
Piney Glen Farms	36-A	180'	Perpendicular	2.55	Rectangle	180'	1.75
SUBJECT PROPERTY	40-A	230'	Perpendicular	2.50	Rectangle	240'	1.76
Piney Glen farms	24-C	153'	Perpendicular	2.78	Rectangle	160'	1.81
Piney Glen Farms	34-A	211'	Perpendicular	2.67	Rectangle	215'	1.83
Piney Glen Farms	18-A	210'	Perpendicular	2.63	Rectangle	210'	1.84
Piney Glen Farms	17-A	207'	Perpendicular	2.63	Rectangle	205'	1.84
Piney Glen Farms	15-A	190'	Perpendicular	3.08	Rectangle	205'	1.95
Piney Glen Farms	35-A	285'	Perpendicular	3.03	Rectangle	275'	2.17
Piney Glen Farms	16-A	197'	Perpendicular	2.55	Rectangle	200'	2.18
Piney Glen Farms	23-A	1035' CL	Perpendicular	5.31	2 Corner Lot	940'	3.00
Piney Glen Farms	22-A	236'	Perpendicular	5.00	Rectangle	225'	3.50

CL= Corner Lot

PINEY GLEN FARMS
NEIGHBORHOOD DATA TABLE

Attachment C-2

Neighborhood Data Table with Steam Valley Buffers Removed

<u>Subdivision</u>	<u>Lot/Block No.</u>	<u>Frontage</u>	<u>Alignment</u>	<u>Lot Size</u>	<u>Shape</u>	<u>Width at BRL</u>	<u>Buildable Area</u>
Piney Glen Farms	34-C	308' CL	Perpendicular	2.01	Rectangle	290'	0.85
Piney Glen Farms	26-C	140' CL	Perpendicular	2.70	Rectangle	195'	0.24
Piney Glen Farms	25-C	226'	Perpendicular	2.51	Rectangle	220'	0.57
Piney Glen Farms	24-C	153'	Perpendicular	2.78	Rectangle	160'	1.51
Piney Glen Farms	23-C	288' CL	Perpendicular	2.08	Rectangle	320'	1.18
Piney Glen Farms	14-C	252' CL	Perpendicular	2.01	Rectangle	285'	1.06
Piney Glen Farms	13-C	275'	Perpendicular	2.02	Rectangle	280'	1.26
Piney Glen Farms	12-C	210'	Perpendicular	2.13	Rectangle	225'	1.40
Piney Glen Farms	11-C	185' CL	Perpendicular	2.05	Rectangle	230'	0.67
Piney Glen Farms	6-C	191' CL	Perpendicular	2.07	Rectangle	210'	0.42
Piney Glen Farms	5-C	165' CL	Perpendicular	2.04	Rectangle	190'	0.52
Piney Glen Farms	1-B	410' CL	Perpendicular	2.19	Rectangle	460'	1.06
Piney Glen Farms	20-B	233'	Perpendicular	2.00	Rectangle	240'	1.27
Piney Glen Farms	12-B	190'	Perpendicular	2.47	Rectangle	230'	1.49
Piney Glen Farms	7-B	285'	Perpendicular	2.00	Square	300'	1.25
Piney Glen Farms	6-B	252' CL	Perpendicular	2.10	Rectangle	272'	1.18
Piney Glen Farms	1-A	192' CL	Perpendicular	2.06	Rectangle	230'	1.29
Piney Glen Farms	2-A	266'	Perpendicular	2.02	Rectangle	255'	1.32
Piney Glen Farms	3-A	447'	Radial	2.05	Pie	387'	1.17
Piney Glen Farms	4-A	242'	Perpendicular	2.10	Rectangle	230'	1.40
Piney Glen Farms	5-A	248'	Perpendicular	2.00	Rectangle	237'	0.96
Piney Glen Farms	6-A	245'	Perpendicular	2.04	Rectangle	237'	1.35
Piney Glen Farms	7-A	225'	Perpendicular	2.01	Rectangle	224'	1.33
Piney Glen Farms	8-A	212'	Perpendicular	2.03	Rectangle	221'	0.74
Piney Glen Farms	14	202'	Perpendicular	2.04	Rectangle	207'	0.76
Piney Glen Farms	27-A	203'	Perpendicular	2.04	Rectangle	194'	1.36
Piney Glen Farms	24-A	219'	Perpendicular	2.56	Rectangle	224'	0.50
Piney Glen Farms	25-A	222'	Perpendicular	2.20	Rectangle	226'	0.70
SUBJECT PROPERTY	37-A	185'	Perpendicular	2.42	Rectangle	185'	1.42
SUBJECT PROPERTY	38-A	191'	Perpendicular	2.42	Rectangle	185'	0.55
SUBJECT PROPERTY	39-A	277'	Perpendicular	2.43	Rectangle	265'	1.57
SUBJECT PROPERTY	40-A	230'	Perpendicular	2.50	Rectangle	240'	1.45
SUBJECT PROPERTY	41-A	289'	Perpendicular	2.50	Rectangle	280'	0.65
Piney Glen Farms	22-A	236'	Perpendicular	5.00	Rectangle	225'	2.90
Piney Glen Farms	23-A	1035' CL	Perpendicular	5.31	2 Corner Lot	940'	2.80
Piney Glen Farms	18-A	210'	Perpendicular	2.63	Rectangle	210'	1.84
Piney Glen Farms	17-A	207'	Perpendicular	2.63	Rectangle	205'	1.84
Piney Glen Farms	16-A	197'	Perpendicular	2.55	Rectangle	200'	1.78
Piney Glen Farms	15-A	190'	Perpendicular	3.08	Rectangle	205'	1.95
Piney Glen Farms	36-A	180'	Perpendicular	2.55	Rectangle	180'	1.75
Piney Glen Farms	35-A	285'	Perpendicular	3.03	Rectangle	275'	2.17
Piney Glen Farms	34-A	211'	Perpendicular	2.67	Rectangle	215'	1.83
Ferris Subdivision	25	410'	Perpendicular	2.10	Irregular Pie	380'	0.80
Ferris Subdivision	20	25'	Perpendicular	2.20	Pan Handle	150'	0.40
Ferris Subdivision	26	180'	Perpendicular	2.00	Irregular	250'	0.90
Ferris Subdivision	27	346'	Parallel	2.10	Rectangle	350'	0.84
Ferris Subdivision	28	346'	Parallel	2.10	Rectangle	360'	0.70
Ferris Subdivision	29	300' CL	Parallel	2.10	Irregular	330'	0.35
Ferris Subdivision	16	325' CL	Perpendicular	2.00	Rectangle	225'	0.60
Ferris Subdivision	17	234'	Perpendicular	2.00	Rectangle	230'	0.46
Palatine Subdivision	1-A	158' CL	Parallel Corner	2.00	Irregular	184'	1.15
Palatine Subdivision	1-B	507' CL	Parallel Corner	2.00	Irregular	395'	1.00
Palatine Subdivision	2-B	284'	Perpendicular	2.00	Irregular	300'	1.00
Palatine Subdivision	3-B	143'	Perpendicular	2.00	Irregular	154'	1.30
Palatine Subdivision	4-B	120'	Perpendicular	2.00	Irregular	130'	1.30

CL= Corner Lot

**PINEY GLEN FARMS
NEIGHBORHOOD DATA TABLE**

Neighborhood Data Table with Steam Valley Buffers Removed

Neighborhood Rank by Frontage

<u>Subdivision</u>	<u>Lot/Block No.</u>	<u>Frontage</u>	<u>Alignment</u>	<u>Lot Size</u>	<u>Shape</u>	<u>Width at BRL</u>	<u>Buildable Area</u>
Ferris Subdivision	20	25'	Perpendicular	2.20	Pan Handle	150'	0.40
Palatine Subdivision	4-B	120'	Perpendicular	2.00	Irregular	130'	1.30
Piney Glen Farms	26-C	140' CL	Perpendicular	2.70	Rectangle	195'	0.24
Palatine Subdivision	3-B	143'	Perpendicular	2.00	Irregular	154'	1.30
Piney Glen Farms	24-C	153'	Perpendicular	2.78	Rectangle	160'	1.51
Palatine Subdivision	1-A	158' CL	Parallel Corner	2.00	Irregular	184'	1.15
Piney Glen Farms	5-C	165' CL	Perpendicular	2.04	Rectangle	190'	0.52
Ferris Subdivision	26	180'	Perpendicular	2.00	Irregular	250'	0.90
Piney Glen Farms	36-A	180'	Perpendicular	2.55	Rectangle	180'	1.75
SUBJECT PROPERTY	37-A	185'	Perpendicular	2.42	Rectangle	185'	1.42
Piney Glen Farms	11-C	185' CL	Perpendicular	2.05	Rectangle	230'	0.67
Piney Glen Farms	15-A	190'	Perpendicular	3.08	Rectangle	205'	1.95
Piney Glen Farms	12-B	190'	Perpendicular	2.47	Rectangle	230'	1.49
SUBJECT PROPERTY	38-A	191'	Perpendicular	2.42	Rectangle	185'	0.55
Piney Glen Farms	6-C	191' CL	Perpendicular	2.07	Rectangle	210'	0.42
Piney Glen Farms	1-A	192' CL	Perpendicular	2.06	Rectangle	230'	1.29
Piney Glen Farms	16-A	197'	Perpendicular	2.55	Rectangle	200'	1.78
Piney Glen Farms	14	202'	Perpendicular	2.04	Rectangle	207'	0.76
Piney Glen Farms	27-A	203'	Perpendicular	2.04	Rectangle	194'	1.36
Piney Glen Farms	17-A	207'	Perpendicular	2.63	Rectangle	205'	1.84
Piney Glen Farms	18-A	210'	Perpendicular	2.63	Rectangle	210'	1.84
Piney Glen Farms	12-C	210'	Perpendicular	2.13	Rectangle	225'	1.40
Piney Glen Farms	34-A	211'	Perpendicular	2.67	Rectangle	215'	1.83
Piney Glen Farms	8-A	212'	Perpendicular	2.03	Rectangle	221'	0.74
Piney Glen Farms	24-A	219'	Perpendicular	2.56	Rectangle	224'	0.50
Piney Glen Farms	25-A	222'	Perpendicular	2.20	Rectangle	226'	0.70
Piney Glen Farms	7-A	225'	Perpendicular	2.01	Rectangle	224'	1.33
Piney Glen Farms	25-C	226'	Perpendicular	2.51	Rectangle	220'	0.57
SUBJECT PROPERTY	40-A	230'	Perpendicular	2.50	Rectangle	240'	1.45
Piney Glen Farms	20-B	233'	Perpendicular	2.00	Rectangle	240'	1.27
Ferris Subdivision	17	234'	Perpendicular	2.00	Rectangle	230'	0.46
Piney Glen Farms	22-A	236'	Perpendicular	5.00	Rectangle	225'	2.90
Piney Glen Farms	4-A	242'	Perpendicular	2.10	Rectangle	230'	1.40
Piney Glen Farms	6-A	245'	Perpendicular	2.04	Rectangle	237'	1.35
Piney Glen Farms	5-A	248'	Perpendicular	2.00	Rectangle	237'	0.96
Piney Glen Farms	6-B	252' CL	Perpendicular	2.10	Rectangle	272'	1.18
Piney Glen Farms	14-C	252' CL	Perpendicular	2.01	Rectangle	285'	1.06
Piney Glen Farms	2-A	266'	Perpendicular	2.02	Rectangle	255'	1.32
Piney Glen Farms	13-C	275'	Perpendicular	2.02	Rectangle	280'	1.26
SUBJECT PROPERTY	39-A	277'	Perpendicular	2.43	Rectangle	265'	1.57
Palatine Subdivision	2-B	284'	Perpendicular	2.00	Irregular	300'	1.00
Piney Glen Farms	7-B	285'	Perpendicular	2.00	Square	300'	1.25
Piney Glen Farms	35-A	285'	Perpendicular	3.03	Rectangle	275'	2.17
Piney Glen Farms	23-C	288' CL	Perpendicular	2.08	Rectangle	320'	1.18
SUBJECT PROPERTY	41-A	289'	Perpendicular	2.50	Rectangle	280'	0.65
Ferris Subdivision	29	300' CL	Parallel	2.10	Irregular	330'	0.35
Piney Glen Farms	34-C	308' CL	Perpendicular	2.01	Rectangle	290'	0.85
Ferris Subdivision	16	325' CL	Perpendicular	2.00	Rectangle	225'	0.60
Ferris Subdivision	27	346'	Parallel	2.10	Rectangle	350'	0.84
Ferris Subdivision	28	346'	Parallel	2.10	Rectangle	360'	0.70
Ferris Subdivision	25	410'	Perpendicular	2.10	Irregular Pie	380'	0.80
Piney Glen Farms	1-B	410' CL	Perpendicular	2.19	Rectangle	460'	1.06
Piney Glen Farms	3-A	447'	Radial	2.05	Pie	387'	1.17
Palatine Subdivision	1-B	507' CL	Parallel Corner	2.00	Irregular	395'	1.00
Piney Glen Farms	23-A	1035' CL	Perpendicular	5.31	2 Corner Lot	940'	2.80

CL= Corner Lot

**PINEY GLEN FARMS
NEIGHBORHOOD DATA TABLE**

Neighborhood Data Table with Steam Valley Buffers Removed

Neighborhood Rank by Lot Size

<u>Subdivision</u>	<u>Lot/Block No.</u>	<u>Frontage</u>	<u>Alignment</u>	<u>Lot Size</u>	<u>Shape</u>	<u>Width at BRL</u>	<u>Buildable Area</u>
Palatine Subdivision	1-A	158' CL	Parallel Corner	2.00	Irregular	184'	1.15
Palatine Subdivision	4-B	120'	Perpendicular	2.00	Irregular	130'	1.30
Palatine Subdivision	3-B	143'	Perpendicular	2.00	Irregular	154'	1.30
Palatine Subdivision	2-B	284'	Perpendicular	2.00	Irregular	300'	1.00
Ferris Subdivision	26	180'	Perpendicular	2.00	Irregular	250'	0.90
Palatine Subdivision	1-B	507' CL	Parallel Corner	2.00	Irregular	395'	1.00
Piney Glen Farms	7-B	285'	Perpendicular	2.00	Square	300'	1.25
Ferris Subdivision	16	325' CL	Perpendicular	2.00	Rectangle	225'	0.60
Piney Glen Farms	5-A	248'	Perpendicular	2.00	Rectangle	237'	0.96
Ferris Subdivision	17	234'	Perpendicular	2.00	Rectangle	230'	0.46
Piney Glen Farms	20-B	233'	Perpendicular	2.00	Rectangle	240'	1.27
Piney Glen Farms	7-A	225'	Perpendicular	2.01	Rectangle	224'	1.33
Piney Glen Farms	34-C	308' CL	Perpendicular	2.01	Rectangle	290'	0.85
Piney Glen Farms	14-C	252' CL	Perpendicular	2.01	Rectangle	285'	1.06
Piney Glen Farms	13-C	275'	Perpendicular	2.02	Rectangle	280'	1.26
Piney Glen Farms	2-A	266'	Perpendicular	2.02	Rectangle	255'	1.32
Piney Glen Farms	8-A	212'	Perpendicular	2.03	Rectangle	221'	0.74
Piney Glen Farms	5-C	165' CL	Perpendicular	2.04	Rectangle	190'	0.52
Piney Glen Farms	14	202'	Perpendicular	2.04	Rectangle	207'	0.76
Piney Glen Farms	27-A	203'	Perpendicular	2.04	Rectangle	194'	1.36
Piney Glen Farms	6-A	245'	Perpendicular	2.04	Rectangle	237'	1.35
Piney Glen Farms	3-A	447'	Radial	2.05	Pie	387'	1.17
Piney Glen Farms	11-C	185' CL	Perpendicular	2.05	Rectangle	230'	0.67
Piney Glen Farms	1-A	192' CL	Perpendicular	2.06	Rectangle	230'	1.29
Piney Glen Farms	6-C	191' CL	Perpendicular	2.07	Rectangle	210'	0.42
Piney Glen Farms	23-C	288' CL	Perpendicular	2.08	Rectangle	320'	1.18
Ferris Subdivision	25	410'	Perpendicular	2.10	Irregular Pie	380'	0.80
Piney Glen Farms	4-A	242'	Perpendicular	2.10	Rectangle	230'	1.40
Piney Glen Farms	6-B	252' CL	Perpendicular	2.10	Rectangle	272'	1.18
Ferris Subdivision	29	300' CL	Parallel	2.10	Irregular	330'	0.35
Ferris Subdivision	28	346'	Parallel	2.10	Rectangle	360'	0.70
Ferris Subdivision	27	346'	Parallel	2.10	Rectangle	350'	0.84
Piney Glen Farms	12-C	210'	Perpendicular	2.13	Rectangle	225'	1.40
Piney Glen Farms	1-B	410' CL	Perpendicular	2.19	Rectangle	460'	1.06
Ferris Subdivision	20	25'	Perpendicular	2.20	Pan Handle	150'	0.40
Piney Glen Farms	25-A	222'	Perpendicular	2.20	Rectangle	226'	0.70
SUBJECT PROPERTY	37-A	185'	Perpendicular	2.42	Rectangle	185'	1.42
SUBJECT PROPERTY	38-A	191'	Perpendicular	2.42	Rectangle	185'	0.55
SUBJECT PROPERTY	39-A	277'	Perpendicular	2.43	Rectangle	265'	1.57
Piney Glen Farms	12-B	190'	Perpendicular	2.47	Rectangle	230'	1.49
SUBJECT PROPERTY	41-A	289'	Perpendicular	2.50	Rectangle	280'	0.65
SUBJECT PROPERTY	40-A	230'	Perpendicular	2.50	Rectangle	240'	1.45
Piney Glen Farms	25-C	226'	Perpendicular	2.51	Rectangle	220'	0.57
Piney Glen Farms	16-A	197'	Perpendicular	2.55	Rectangle	200'	1.78
Piney Glen Farms	36-A	180'	Perpendicular	2.55	Rectangle	180'	1.75
Piney Glen Farms	24-A	219'	Perpendicular	2.56	Rectangle	224'	0.50
Piney Glen Farms	18-A	210'	Perpendicular	2.63	Rectangle	210'	1.84
Piney Glen Farms	17-A	207'	Perpendicular	2.63	Rectangle	205'	1.84
Piney Glen Farms	34-A	211'	Perpendicular	2.67	Rectangle	215'	1.83
Piney Glen Farms	26-C	140' CL	Perpendicular	2.70	Rectangle	195'	0.24
Piney Glen Farms	24-C	153'	Perpendicular	2.78	Rectangle	160'	1.51
Piney Glen Farms	35-A	285'	Perpendicular	3.03	Rectangle	275'	2.17
Piney Glen Farms	15-A	190'	Perpendicular	3.08	Rectangle	205'	1.95
Piney Glen Farms	22-A	236'	Perpendicular	5.00	Rectangle	225'	2.90
Piney Glen Farms	23-A	1035' CL	Perpendicular	5.31	2 Corner Lot	940'	2.80

CL= Corner Lot

**PINEY GLEN FARMS
NEIGHBORHOOD DATA TABLE**

Neighborhood Data Table with Steam Valley Buffers Removed

Neighborhood Rank by Buildable Area

<u>Subdivision</u>	<u>Lot/Block No.</u>	<u>Frontage</u>	<u>Alignment</u>	<u>Lot Size</u>	<u>Shape</u>	<u>Width at BRL</u>	<u>Buildable Area</u>
Piney Glen Farms	26-C	140' CL	Perpendicular	2.70	Rectangle	195'	0.24
Ferris Subdivision	29	300' CL	Parallel	2.10	Irregular	330'	0.35
Ferris Subdivision	20	25'	Perpendicular	2.20	Pan Handle	150'	0.40
Piney Glen Farms	6-C	191' CL	Perpendicular	2.07	Rectangle	210'	0.42
Ferris Subdivision	17	234'	Perpendicular	2.00	Rectangle	230'	0.46
Piney Glen Farms	24-A	219'	Perpendicular	2.56	Rectangle	224'	0.50
Piney Glen Farms	5-C	165' CL	Perpendicular	2.04	Rectangle	190'	0.52
SUBJECT PROPERTY	38-A	191'	Perpendicular	2.42	Rectangle	185'	0.55
Piney Glen Farms	25-C	226'	Perpendicular	2.51	Rectangle	220'	0.57
Ferris Subdivision	16	325' CL	Perpendicular	2.00	Rectangle	225'	0.60
SUBJECT PROPERTY	41-A	289'	Perpendicular	2.50	Rectangle	280'	0.65
Piney Glen Farms	11-C	185' CL	Perpendicular	2.05	Rectangle	230'	0.67
Piney Glen Farms	25-A	222'	Perpendicular	2.20	Rectangle	226'	0.70
Ferris Subdivision	28	346'	Parallel	2.10	Rectangle	360'	0.70
Piney Glen Farms	8-A	212'	Perpendicular	2.03	Rectangle	221'	0.74
Piney Glen Farms	14	202'	Perpendicular	2.04	Rectangle	207'	0.76
Ferris Subdivision	25	410'	Perpendicular	2.10	Irregular Pie	380'	0.80
Ferris Subdivision	27	346'	Parallel	2.10	Rectangle	350'	0.84
Piney Glen Farms	34-C	308' CL	Perpendicular	2.01	Rectangle	290'	0.85
Ferris Subdivision	26	180'	Perpendicular	2.00	Irregular	250'	0.90
Piney Glen Farms	5-A	248'	Perpendicular	2.00	Rectangle	237'	0.96
Palatine Subdivision	2-B	284'	Perpendicular	2.00	Irregular	300'	1.00
Palatine Subdivision	1-B	507' CL	Parallel Corner	2.00	Irregular	395'	1.00
Piney Glen Farms	14-C	252' CL	Perpendicular	2.01	Rectangle	285'	1.06
Piney Glen Farms	1-B	410' CL	Perpendicular	2.19	Rectangle	460'	1.06
Palatine Subdivision	1-A	158' CL	Parallel Corner	2.00	Irregular	184'	1.15
Piney Glen Farms	3-A	447'	Radial	2.05	Pie	387'	1.17
Piney Glen Farms	6-B	252' CL	Perpendicular	2.10	Rectangle	272'	1.18
Piney Glen Farms	23-C	288' CL	Perpendicular	2.08	Rectangle	320'	1.18
Piney Glen Farms	7-B	285'	Perpendicular	2.00	Square	300'	1.25
Piney Glen Farms	13-C	275'	Perpendicular	2.02	Rectangle	280'	1.26
Piney Glen Farms	20-B	233'	Perpendicular	2.00	Rectangle	240'	1.27
Piney Glen Farms	1-A	192' CL	Perpendicular	2.06	Rectangle	230'	1.29
Palatine Subdivision	4-B	120'	Perpendicular	2.00	Irregular	130'	1.30
Palatine Subdivision	3-B	143'	Perpendicular	2.00	Irregular	154'	1.30
Piney Glen Farms	2-A	266'	Perpendicular	2.02	Rectangle	255'	1.32
Piney Glen Farms	7-A	225'	Perpendicular	2.01	Rectangle	224'	1.33
Piney Glen Farms	6-A	245'	Perpendicular	2.04	Rectangle	237'	1.35
Piney Glen Farms	27-A	203'	Perpendicular	2.04	Rectangle	194'	1.36
Piney Glen Farms	4-A	242'	Perpendicular	2.10	Rectangle	230'	1.40
Piney Glen Farms	12-C	210'	Perpendicular	2.13	Rectangle	225'	1.40
SUBJECT PROPERTY	37-A	185'	Perpendicular	2.42	Rectangle	185'	1.42
SUBJECT PROPERTY	40-A	230'	Perpendicular	2.50	Rectangle	240'	1.45
Piney Glen Farms	12-B	190'	Perpendicular	2.47	Rectangle	230'	1.49
Piney Glen Farms	24-C	153'	Perpendicular	2.78	Rectangle	160'	1.51
SUBJECT PROPERTY	39-A	277'	Perpendicular	2.43	Rectangle	265'	1.57
Piney Glen Farms	36-A	180'	Perpendicular	2.55	Rectangle	180'	1.75
Piney Glen Farms	16-A	197'	Perpendicular	2.55	Rectangle	200'	1.78
Piney Glen Farms	34-A	211'	Perpendicular	2.67	Rectangle	215'	1.83
Piney Glen Farms	17-A	207'	Perpendicular	2.63	Rectangle	205'	1.84
Piney Glen Farms	18-A	210'	Perpendicular	2.63	Rectangle	210'	1.84
Piney Glen Farms	15-A	190'	Perpendicular	3.08	Rectangle	205'	1.95
Piney Glen Farms	35-A	285'	Perpendicular	3.03	Rectangle	275'	2.17
Piney Glen Farms	23-A	1035' CL	Perpendicular	5.31	2 Corner Lot	940'	2.80
Piney Glen Farms	22-A	236'	Perpendicular	5.00	Rectangle	225'	2.90

CL= Corner Lot

**PINEY GLEN FARMS
NEIGHBORHOOD DATA TABLE**

Neighborhood Data Table with Steam Valley Buffers Removed

Neighborhood Rank by Width at BRL

<u>Subdivision</u>	<u>Lot/Block No.</u>	<u>Frontage</u>	<u>Alignment</u>	<u>Lot Size</u>	<u>Shape</u>	<u>Width at BRL</u>	<u>Buildable Area</u>
Palatine Subdivision	4-B	120'	Perpendicular	2.00	Irregular	130'	1.30
Ferris Subdivision	20	25'	Perpendicular	2.20	Pan Handle	150'	0.40
Palatine Subdivision	3-B	143'	Perpendicular	2.00	Irregular	154'	1.30
Piney Glen Farms	24-C	153'	Perpendicular	2.78	Rectangle	160'	1.51
Piney Glen Farms	36-A	180'	Perpendicular	2.55	Rectangle	180'	1.75
Palatine Subdivision	1-A	158' CL	Parallel Corner	2.00	Irregular	184'	1.15
SUBJECT PROPERTY	38-A	191'	Perpendicular	2.42	Rectangle	185'	0.55
SUBJECT PROPERTY	37-A	185'	Perpendicular	2.42	Rectangle	185'	1.42
Piney Glen Farms	5-C	165' CL	Perpendicular	2.04	Rectangle	190'	0.52
Piney Glen Farms	27-A	203'	Perpendicular	2.04	Rectangle	194'	1.36
Piney Glen Farms	26-C	140' CL	Perpendicular	2.70	Rectangle	195'	0.24
Piney Glen Farms	16-A	197'	Perpendicular	2.55	Rectangle	200'	1.78
Piney Glen Farms	17-A	207'	Perpendicular	2.63	Rectangle	205'	1.84
Piney Glen Farms	15-A	190'	Perpendicular	3.08	Rectangle	205'	1.95
Piney Glen Farms	14	202'	Perpendicular	2.04	Rectangle	207'	0.76
Piney Glen Farms	6-C	191' CL	Perpendicular	2.07	Rectangle	210'	0.42
Piney Glen Farms	18-A	210'	Perpendicular	2.63	Rectangle	210'	1.84
Piney Glen Farms	34-A	211'	Perpendicular	2.67	Rectangle	215'	1.83
Piney Glen Farms	25-C	226'	Perpendicular	2.51	Rectangle	220'	0.57
Piney Glen Farms	8-A	212'	Perpendicular	2.03	Rectangle	221'	0.74
Piney Glen Farms	24-A	219'	Perpendicular	2.56	Rectangle	224'	0.50
Piney Glen Farms	7-A	225'	Perpendicular	2.01	Rectangle	224'	1.33
Piney Glen Farms	22-A	236'	Perpendicular	5.00	Rectangle	225'	2.90
Piney Glen Farms	12-C	210'	Perpendicular	2.13	Rectangle	225'	1.40
Ferris Subdivision	16	325' CL	Perpendicular	2.00	Rectangle	225'	0.60
Piney Glen Farms	25-A	222'	Perpendicular	2.20	Rectangle	226'	0.70
Ferris Subdivision	17	234'	Perpendicular	2.00	Rectangle	230'	0.46
Piney Glen Farms	11-C	185' CL	Perpendicular	2.05	Rectangle	230'	0.67
Piney Glen Farms	4-A	242'	Perpendicular	2.10	Rectangle	230'	1.40
Piney Glen Farms	12-B	190'	Perpendicular	2.47	Rectangle	230'	1.49
Piney Glen Farms	1-A	192' CL	Perpendicular	2.06	Rectangle	230'	1.29
Piney Glen Farms	6-A	245'	Perpendicular	2.04	Rectangle	237'	1.35
Piney Glen Farms	5-A	248'	Perpendicular	2.00	Rectangle	237'	0.96
SUBJECT PROPERTY	40-A	230'	Perpendicular	2.50	Rectangle	240'	1.45
Piney Glen Farms	20-B	233'	Perpendicular	2.00	Rectangle	240'	1.27
Ferris Subdivision	26	180'	Perpendicular	2.00	Irregular	250'	0.90
Piney Glen Farms	2-A	266'	Perpendicular	2.02	Rectangle	255'	1.32
SUBJECT PROPERTY	39-A	277'	Perpendicular	2.43	Rectangle	265'	1.57
Piney Glen Farms	6-B	252' CL	Perpendicular	2.10	Rectangle	272'	1.18
Piney Glen Farms	35-A	285'	Perpendicular	3.03	Rectangle	275'	2.17
Piney Glen Farms	13-C	275'	Perpendicular	2.02	Rectangle	280'	1.26
SUBJECT PROPERTY	41-A	289'	Perpendicular	2.50	Rectangle	280'	0.65
Piney Glen Farms	14-C	252' CL	Perpendicular	2.01	Rectangle	285'	1.06
Piney Glen Farms	34-C	308' CL	Perpendicular	2.01	Rectangle	290'	0.85
Piney Glen Farms	7-B	285'	Perpendicular	2.00	Square	300'	1.25
Palatine Subdivision	2-B	284'	Perpendicular	2.00	Irregular	300'	1.00
Piney Glen Farms	23-C	288' CL	Perpendicular	2.08	Rectangle	320'	1.18
Ferris Subdivision	29	300' CL	Parallel	2.10	Irregular	330'	0.35
Ferris Subdivision	27	346'	Parallel	2.10	Rectangle	350'	0.84
Ferris Subdivision	28	346'	Parallel	2.10	Rectangle	360'	0.70
Ferris Subdivision	25	410'	Perpendicular	2.10	Irregular Pie	380'	0.80
Piney Glen Farms	3-A	447'	Radial	2.05	Pie	387'	1.17
Palatine Subdivision	1-B	507' CL	Parallel Corner	2.00	Irregular	395'	1.00
Piney Glen Farms	1-B	410' CL	Perpendicular	2.19	Rectangle	460'	1.06
Piney Glen Farms	23-A	1035' CL	Perpendicular	5.31	2 Corner Lot	940'	2.80

CL= Corner Lot