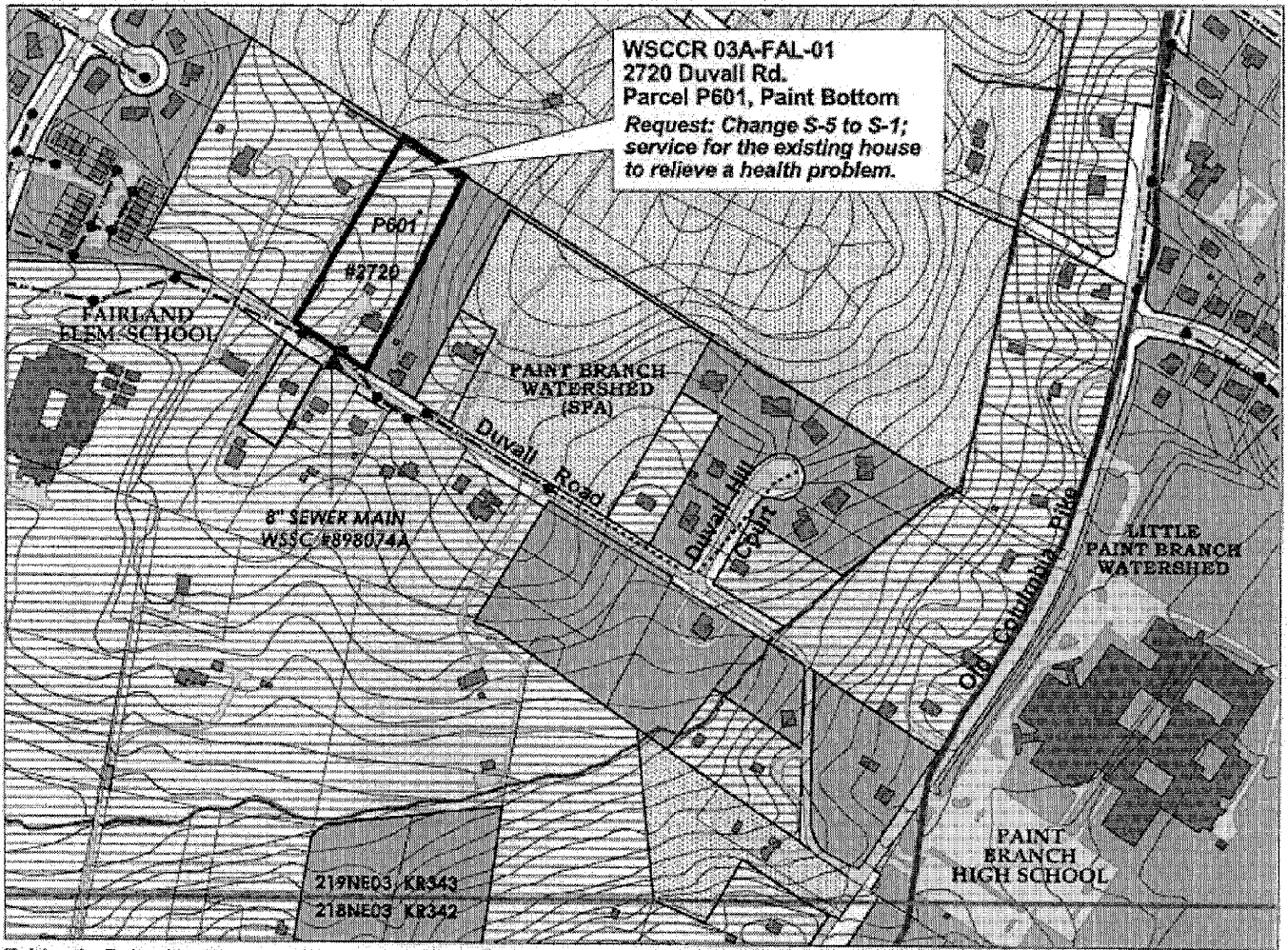


Sewer Service Area Categories Map WSSCR 03A-FAL-01 (McIntyre & Wade)

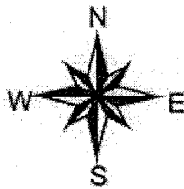


Fairland - Beltsville Planning Area



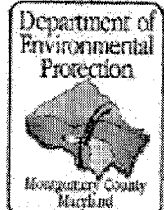
MAP LEGEND

- | | |
|--|---|
| Property | |
| WSSC Map Grid | |
| Sewer Manholes | |
| Sewer Mains | |
| Small-Diameter, Low-Pressure Mains | |
| 6\"- to 8\"-Diameter Gravity Mains | |
| 10\"- to 14\"-Diameter Gravity Mains | |
| 15\"- to 42\"-Diameter (CIP) Trunk Mains | |
| 48\"- or Larger-Diameter (CIP) Trunk Mains | |
| Buildings | |
| Roads | |
| Topography (C.L. = 5 Feet) | |
| Watersheds | |
| Streams | |
| Ponds - Lakes | |
| | Sewer Service Area Categories (6/03) |
| | S-1 |
| | S-3 |
| | S-4 |
| | S-5 |
| | S-6 |



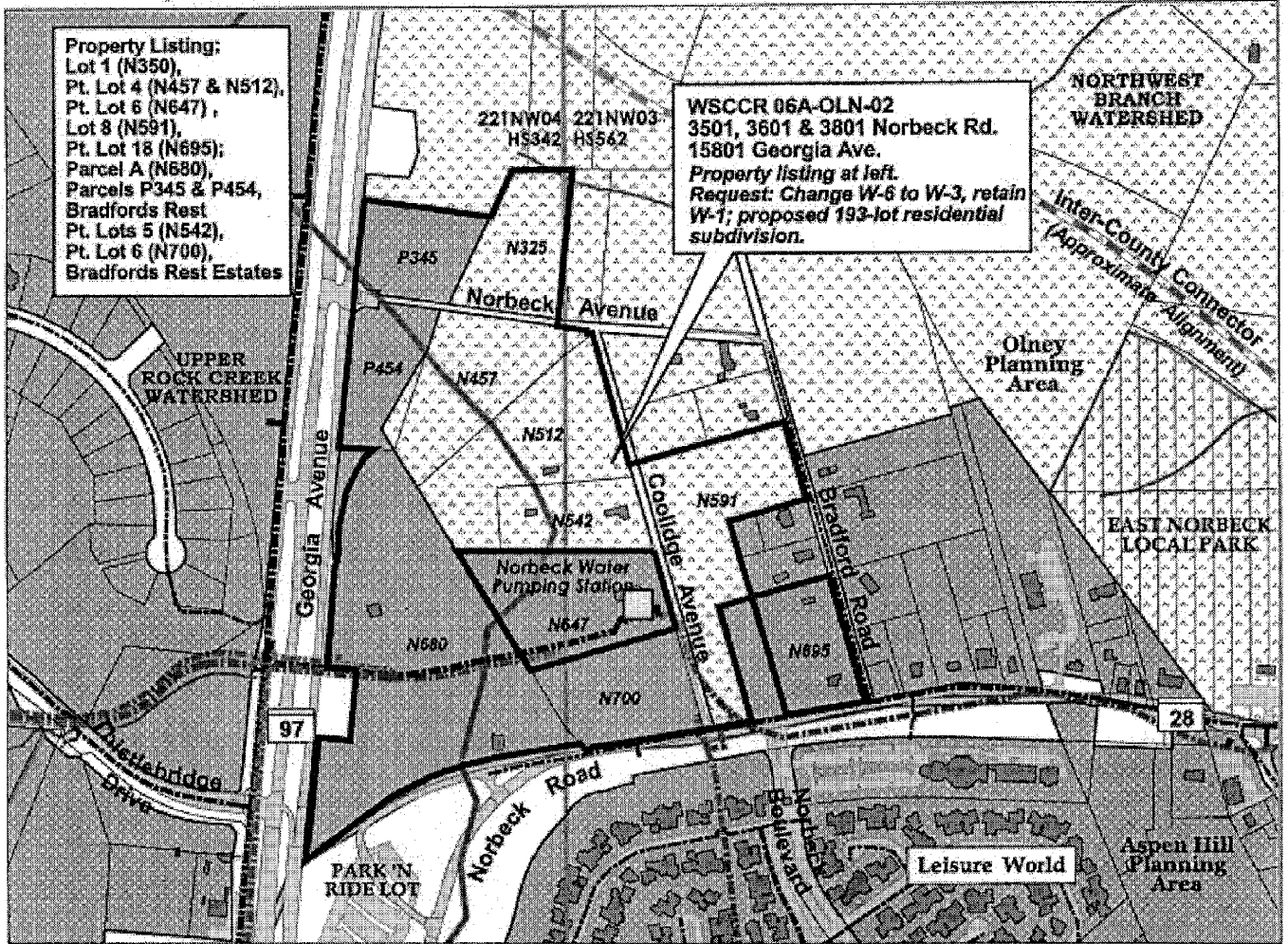
June 2003 Update
Service Area Categories Map

Montgomery County, Maryland
Comprehensive Water Supply
and Sewerage Systems Plan



Water and Wastewater Policy Group
2/10/06 update - GIS Project File:
o:\wwteam\ccrs-pas\fairland\03a-fal-01=mcintyre-wade=s.apr

Water Service Area Categories Map: WSCCR 06A-OLN-02 (The Georgia Group LP & Mid-Atlantic Golf/Norbeck LLC)

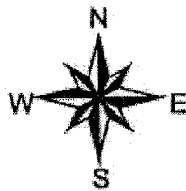


MAP LEGEND

- Property
- WSSC Map Grid
- Water Mains**
- 8" - or Smaller-Dia. Mains
- 10" to 15"-Dia. Mains
- 16" - to 24"-Dia. (CIP) Mains
- 30" - to 42"-Dia. (CIP) Mains *
- 48" - or Larger-Dia. (CIP) Mains *
- * No Individual Connections
- Buildings
- Roads
- Watersheds
- Streams
- Ponds - Lakes
- M-NCPPC Planning Areas
- County - State - Federal Parks

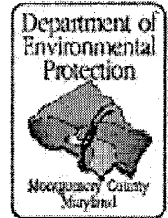
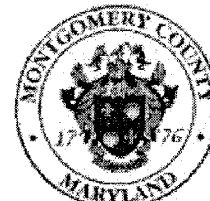
Water Service Area Categories

- W-1
- W-3
- W-4
- W-5
- W-6



June 2003 Update
Service Area Categories Map

Montgomery County, Maryland
Comprehensive Water Supply
and Sewerage Systems Plan



Water & Wastewater Policy Group
2/1/06 - GIS Project File:
o:\wteam\ccrs-pas\olney\2006ccrs\06a-oln-02-norbeck-crossing=ws.apr