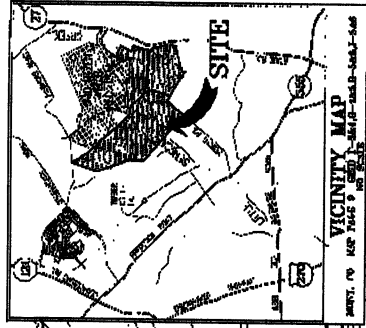


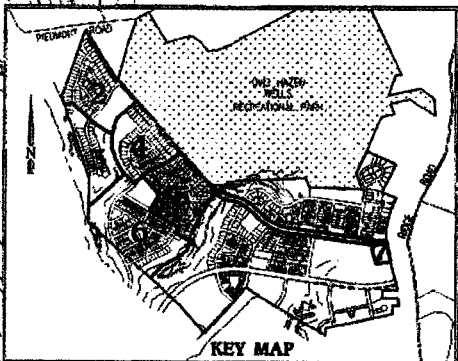
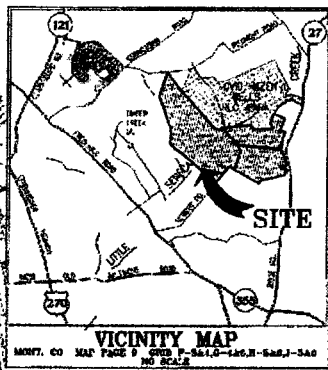
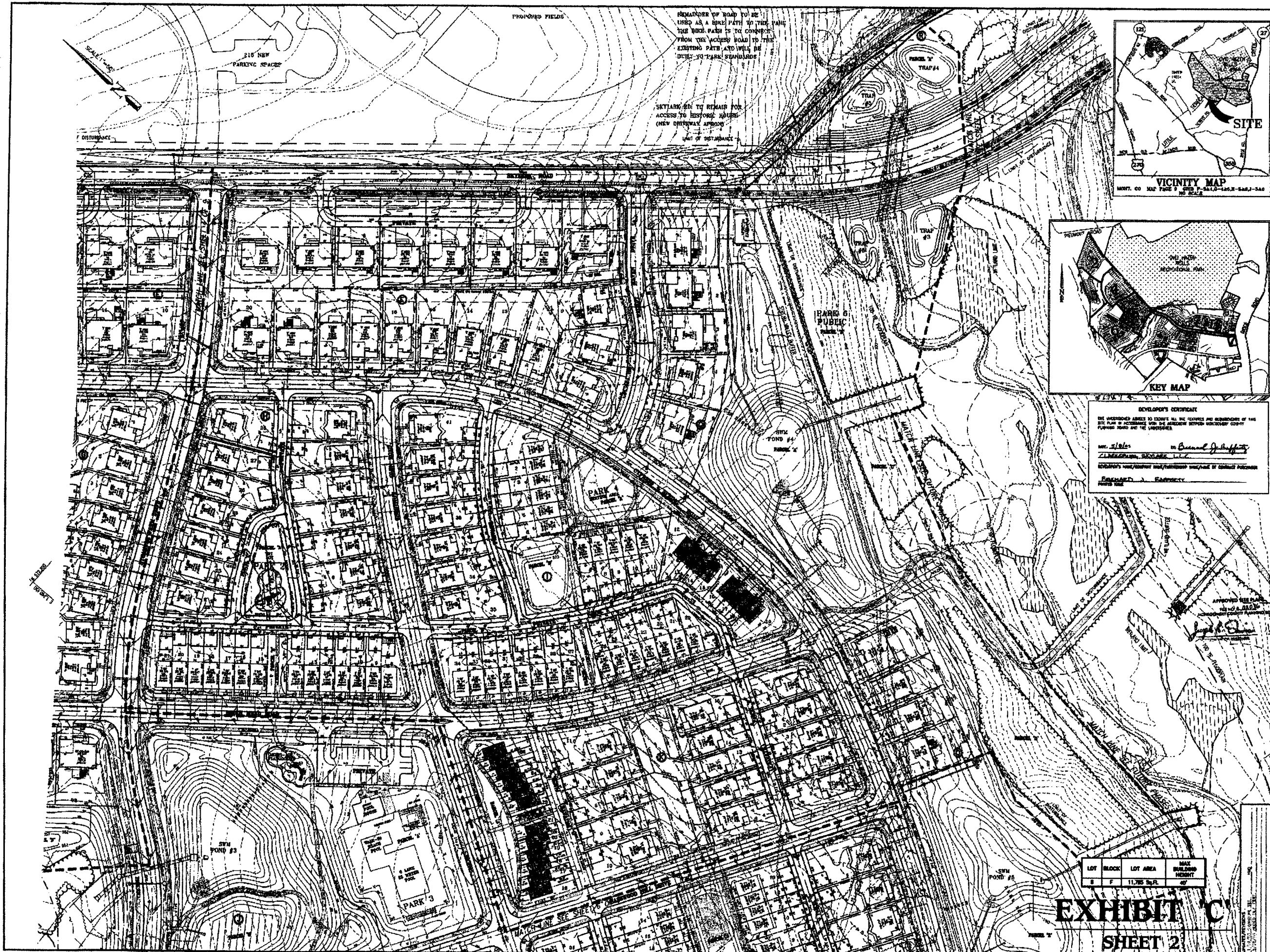
DATE	NO.	DESCRIPTION
12/11/02	1	PRELIMINARY SITE DEVELOPMENT PLAN
03/04/03	2	REVISION: PER COMMENTS FROM MONTGOMERY COUNTY DEPARTMENT OF PUBLIC WORKS AND SAFETY
06/10/03	3	REVISION: PER COMMENTS FROM MONTGOMERY COUNTY DEPARTMENT OF PUBLIC WORKS AND SAFETY
09/15/03	4	REVISION: PER COMMENTS FROM MONTGOMERY COUNTY DEPARTMENT OF PUBLIC WORKS AND SAFETY
12/11/03	5	REVISION: PER COMMENTS FROM MONTGOMERY COUNTY DEPARTMENT OF PUBLIC WORKS AND SAFETY
03/04/04	6	REVISION: PER COMMENTS FROM MONTGOMERY COUNTY DEPARTMENT OF PUBLIC WORKS AND SAFETY
06/10/04	7	REVISION: PER COMMENTS FROM MONTGOMERY COUNTY DEPARTMENT OF PUBLIC WORKS AND SAFETY
09/15/04	8	REVISION: PER COMMENTS FROM MONTGOMERY COUNTY DEPARTMENT OF PUBLIC WORKS AND SAFETY
12/11/04	9	REVISION: PER COMMENTS FROM MONTGOMERY COUNTY DEPARTMENT OF PUBLIC WORKS AND SAFETY



LOT	WIDTH	LOT AREA	MAX. BUILDING HEIGHT
10	65	13,600 S.F.	35'
11	65	13,600 S.F.	35'
12	65	13,600 S.F.	35'
13	65	13,600 S.F.	35'
14	65	13,600 S.F.	35'

**EXHIBIT 'C'**  
**SHEET 1**

REVIEWER'S CERTIFICATE:  
 I, the undersigned, being a duly licensed professional engineer in the State of Maryland, do hereby certify that I am a duly licensed professional engineer in the State of Maryland, and that I am the author of the above-mentioned plan, and that the same complies with all the provisions of the laws and regulations of the State of Maryland relating to the practice of my profession.  
 My Comm. No. 13278  
 Charles F. Johnson & Associates, Inc.  
 Licensed Professional Engineer  
 State of Maryland



**DEVELOPER'S CERTIFICATE**  
 I, THE UNDERSIGNED, HEREBY CERTIFY THAT ALL THE FEATURES AND MEMORANDA OF THIS PLAN IN ACCORDANCE WITH THE AGREEMENT BETWEEN MONTGOMERY COUNTY PLANNING BOARD AND THE UNDERSIGNED.  
 PREPARED BY: Charles P. Johnson & Associates, Inc.  
 DATE: 10/15/76

**CPJ**  
 ASSOCIATES  
 Charles P. Johnson & Associates, Inc.  
 PLANNERS - ENGINEERS - ARCHITECTS - SURVEYORS  
 1000 W. WASHINGTON BLVD., SUITE 200  
 WASHINGTON, D.C. 20004  
 TELEPHONE: (202) 638-1100  
 FAX: (202) 638-1101

**SITE DEVELOPMENT PLAN**  
**GREENWAY VILLAGE AT CLARKSBURG**  
 CLARKSBURG (2nd) ELECTION DISTRICT  
 MONTGOMERY COUNTY, MARYLAND

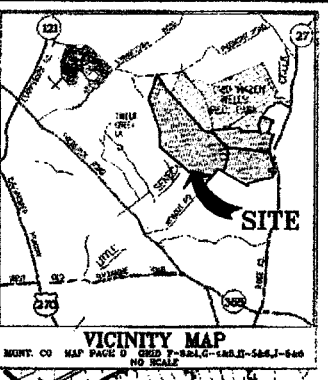
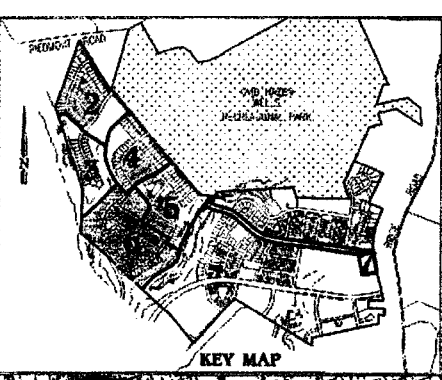
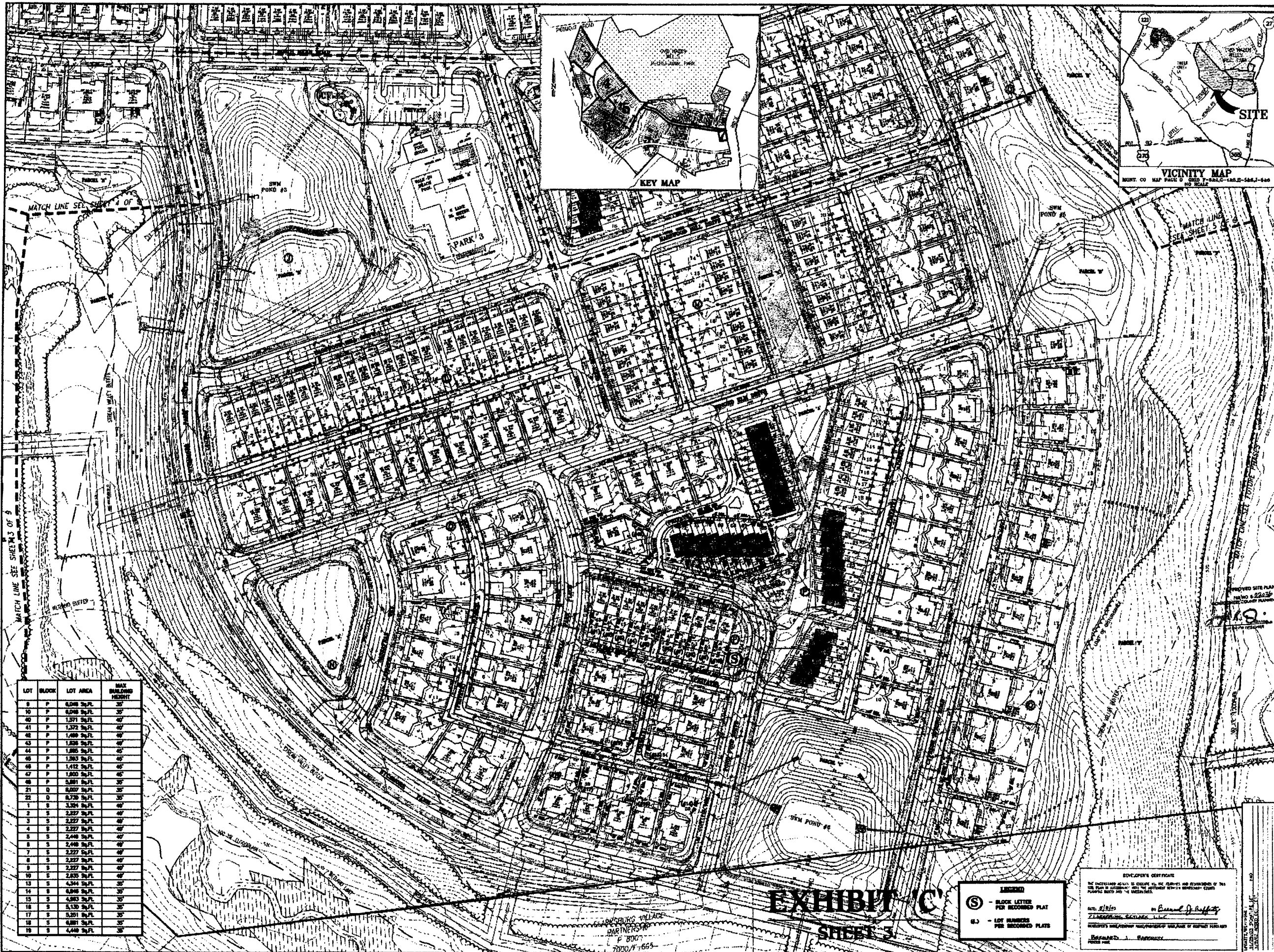
Prelim. Plan #1-02033  
 Site Plan #8-02036  
 NRI #4-02076

LOT	BLOCK	LOT AREA	MAX. BUILDING HEIGHT
8	F	11,795 Sq. Ft.	40'

**EXHIBIT C**  
**SHEET 2**

FILE NO.	DATE	BY	REVISION
5	9		





LOT	BLOCK	LOT AREA	MAX BUILDING HEIGHT
8	P	6,048 Sq.Ft.	35'
10	P	6,048 Sq.Ft.	35'
40	P	1,571 Sq.Ft.	40'
41	P	1,572 Sq.Ft.	40'
42	P	1,489 Sq.Ft.	40'
43	P	1,828 Sq.Ft.	40'
44	P	1,885 Sq.Ft.	40'
45	P	1,883 Sq.Ft.	40'
46	P	1,412 Sq.Ft.	40'
47	P	1,800 Sq.Ft.	40'
48	P	5,881 Sq.Ft.	35'
21	D	8,807 Sq.Ft.	35'
22	D	8,738 Sq.Ft.	35'
1	S	3,324 Sq.Ft.	40'
2	S	3,327 Sq.Ft.	40'
3	S	3,327 Sq.Ft.	40'
4	S	3,327 Sq.Ft.	40'
5	S	2,448 Sq.Ft.	40'
6	S	2,448 Sq.Ft.	40'
7	S	2,327 Sq.Ft.	40'
8	S	2,327 Sq.Ft.	40'
9	S	2,327 Sq.Ft.	40'
10	S	2,325 Sq.Ft.	40'
13	S	4,344 Sq.Ft.	35'
14	S	6,048 Sq.Ft.	35'
15	S	4,983 Sq.Ft.	35'
16	S	5,130 Sq.Ft.	35'
17	S	5,201 Sq.Ft.	35'
18	S	6,881 Sq.Ft.	35'
19	S	4,448 Sq.Ft.	35'

**EXHIBIT 'C'**  
SHEET 3

- LEGEND**
- Ⓢ - BLOCK LETTER FOR RECORDED PLAT
  - Ⓜ - LOT NUMBERS FOR RECORDED PLATS

DEVELOPER'S CERTIFICATE  
 THE UNDERSIGNED SHALL BE OBLIGED TO THE PLANNING AND RECORDS DEPARTMENT OF THE  
 COUNTY OF MONTGOMERY, MARYLAND, TO RECORD THIS PLAT WITHIN THE SPECIFIED PERIOD OF  
 TIME AND TO FURNISH THE NECESSARY INFORMATION TO THE COUNTY RECORDS DEPARTMENT.  
 DATE: 8/10/15  
 BY: [Signature]  
 TITLE: [Title]  
 DEVELOPER'S CERTIFICATE

**CPJ ASSOCIATES**  
 Charles P. Johnson & Associates, Inc.  
 PLANNING, ENGINEERING, LANDSCAPE ARCHITECTURE, INTERIORS  
 1000 WOODBURN ROAD, SUITE 200, WASHINGTON, MARYLAND 20004  
 PHONE: (301) 461-1100 FAX: (301) 461-1101  
 WWW: CPJASSOCIATES.COM

**GREENWAY VILLAGE AT CLARKSBURG**  
 CLARKSBURG (2ND) ELECTION DISTRICT  
 MONTGOMERY COUNTY, MARYLAND

Site Development Plan  
 Prelim. Plan #1-02033  
 Site Plan #8-02036  
 NRI #4-02076

APPROVED SITE PLAN  
 PERMITS # 22629  
 8/10/15

DATE: 8/10/15  
 BY: [Signature]  
 TITLE: [Title]

FILE NO: 9