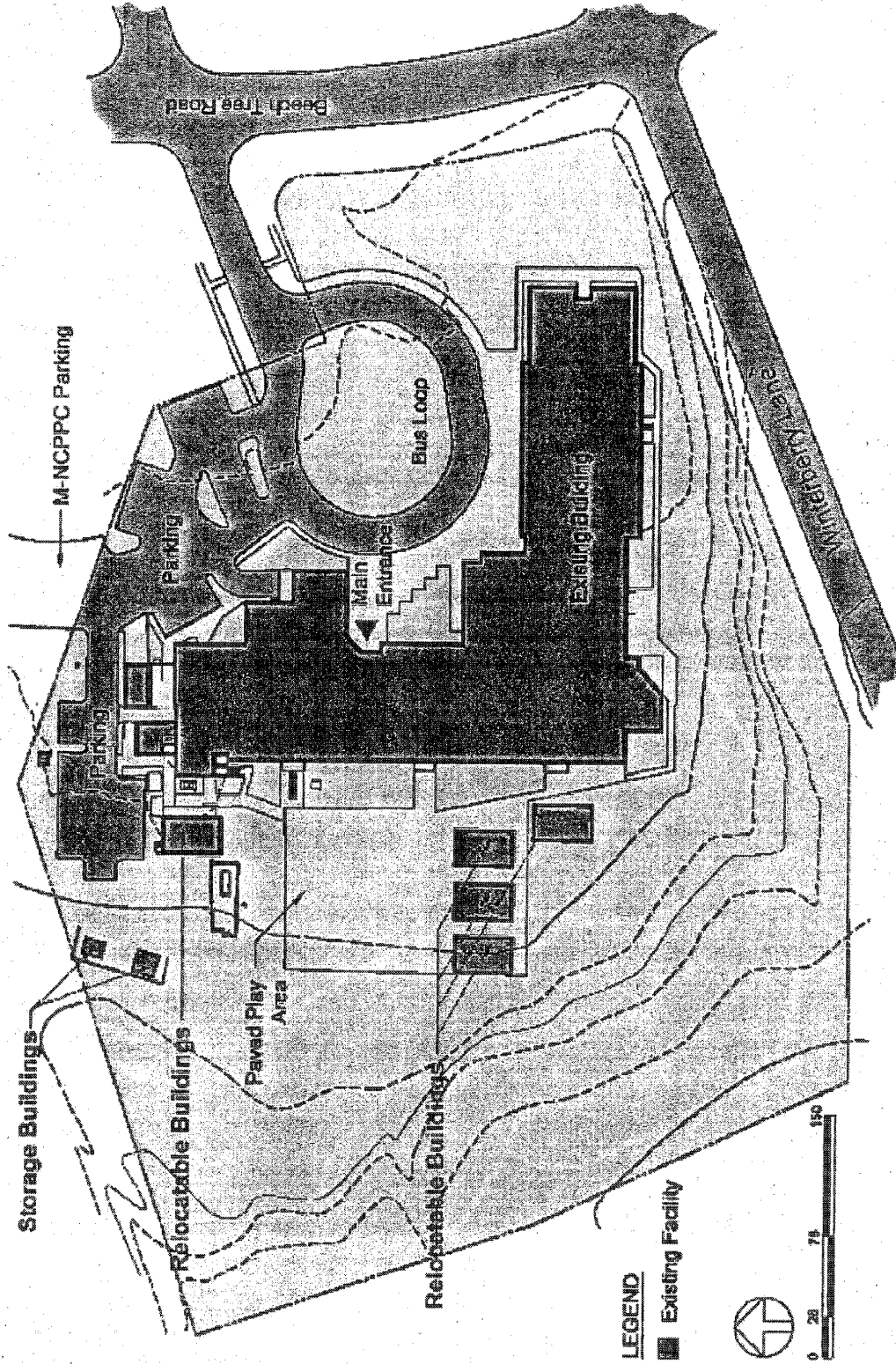
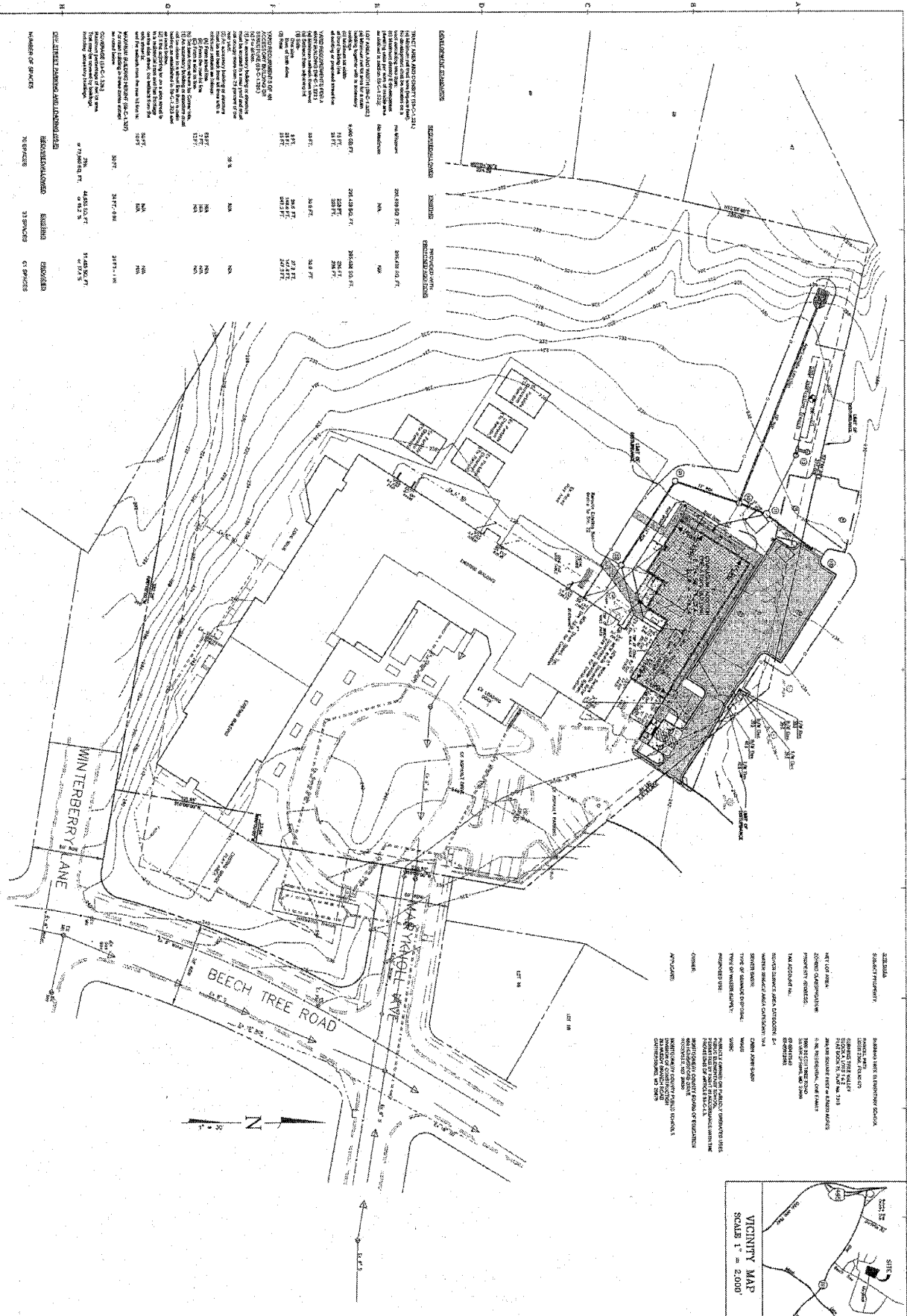


**Existing Site Plan**



# ATTACHMENT 3

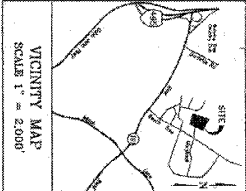


Call "Miss Urry" at 1-800-257-7777, 48 hours prior to the start of work. The work is required to be completed by the start of the school year. The work is required to be completed by the start of the school year. The work is required to be completed by the start of the school year.

DEVELOPMENT FEATURES	REQUIREMENTS	PROPOSED VALUES
1. TOTAL AREA (ACRES)	200.00 AC	200.00 AC
2. TOTAL AREA (SQ. FT.)	13,869,600 SQ. FT.	13,869,600 SQ. FT.
3. TOTAL AREA (SQ. YD.)	311,100 SQ. YD.	311,100 SQ. YD.
4. TOTAL AREA (SQ. MI.)	0.408 SQ. MI.	0.408 SQ. MI.
5. TOTAL AREA (ACRES)	200.00 AC	200.00 AC
6. TOTAL AREA (SQ. FT.)	13,869,600 SQ. FT.	13,869,600 SQ. FT.
7. TOTAL AREA (SQ. YD.)	311,100 SQ. YD.	311,100 SQ. YD.
8. TOTAL AREA (SQ. MI.)	0.408 SQ. MI.	0.408 SQ. MI.
9. TOTAL AREA (ACRES)	200.00 AC	200.00 AC
10. TOTAL AREA (SQ. FT.)	13,869,600 SQ. FT.	13,869,600 SQ. FT.
11. TOTAL AREA (SQ. YD.)	311,100 SQ. YD.	311,100 SQ. YD.
12. TOTAL AREA (SQ. MI.)	0.408 SQ. MI.	0.408 SQ. MI.
13. TOTAL AREA (ACRES)	200.00 AC	200.00 AC
14. TOTAL AREA (SQ. FT.)	13,869,600 SQ. FT.	13,869,600 SQ. FT.
15. TOTAL AREA (SQ. YD.)	311,100 SQ. YD.	311,100 SQ. YD.
16. TOTAL AREA (SQ. MI.)	0.408 SQ. MI.	0.408 SQ. MI.
17. TOTAL AREA (ACRES)	200.00 AC	200.00 AC
18. TOTAL AREA (SQ. FT.)	13,869,600 SQ. FT.	13,869,600 SQ. FT.
19. TOTAL AREA (SQ. YD.)	311,100 SQ. YD.	311,100 SQ. YD.
20. TOTAL AREA (SQ. MI.)	0.408 SQ. MI.	0.408 SQ. MI.



- 1. TOTAL AREA (ACRES)
- 2. TOTAL AREA (SQ. FT.)
- 3. TOTAL AREA (SQ. YD.)
- 4. TOTAL AREA (SQ. MI.)
- 5. TOTAL AREA (ACRES)
- 6. TOTAL AREA (SQ. FT.)
- 7. TOTAL AREA (SQ. YD.)
- 8. TOTAL AREA (SQ. MI.)
- 9. TOTAL AREA (ACRES)
- 10. TOTAL AREA (SQ. FT.)
- 11. TOTAL AREA (SQ. YD.)
- 12. TOTAL AREA (SQ. MI.)
- 13. TOTAL AREA (ACRES)
- 14. TOTAL AREA (SQ. FT.)
- 15. TOTAL AREA (SQ. YD.)
- 16. TOTAL AREA (SQ. MI.)
- 17. TOTAL AREA (ACRES)
- 18. TOTAL AREA (SQ. FT.)
- 19. TOTAL AREA (SQ. YD.)
- 20. TOTAL AREA (SQ. MI.)



NO.	DATE	DESCRIPTION
1	01/15/20	PRELIMINARY
2	02/10/20	REVISED
3	03/05/20	REVISED
4	04/01/20	REVISED
5	05/01/20	REVISED
6	06/01/20	REVISED
7	07/01/20	REVISED
8	08/01/20	REVISED
9	09/01/20	REVISED
10	10/01/20	REVISED
11	11/01/20	REVISED
12	12/01/20	REVISED
13	01/01/21	REVISED
14	02/01/21	REVISED
15	03/01/21	REVISED
16	04/01/21	REVISED
17	05/01/21	REVISED
18	06/01/21	REVISED
19	07/01/21	REVISED
20	08/01/21	REVISED
21	09/01/21	REVISED
22	10/01/21	REVISED
23	11/01/21	REVISED
24	12/01/21	REVISED
25	01/01/22	REVISED
26	02/01/22	REVISED
27	03/01/22	REVISED
28	04/01/22	REVISED
29	05/01/22	REVISED
30	06/01/22	REVISED
31	07/01/22	REVISED
32	08/01/22	REVISED
33	09/01/22	REVISED
34	10/01/22	REVISED
35	11/01/22	REVISED
36	12/01/22	REVISED
37	01/01/23	REVISED
38	02/01/23	REVISED
39	03/01/23	REVISED
40	04/01/23	REVISED
41	05/01/23	REVISED
42	06/01/23	REVISED
43	07/01/23	REVISED
44	08/01/23	REVISED
45	09/01/23	REVISED
46	10/01/23	REVISED
47	11/01/23	REVISED
48	12/01/23	REVISED
49	01/01/24	REVISED
50	02/01/24	REVISED
51	03/01/24	REVISED
52	04/01/24	REVISED
53	05/01/24	REVISED
54	06/01/24	REVISED
55	07/01/24	REVISED
56	08/01/24	REVISED
57	09/01/24	REVISED
58	10/01/24	REVISED
59	11/01/24	REVISED
60	12/01/24	REVISED
61	01/01/25	REVISED
62	02/01/25	REVISED
63	03/01/25	REVISED
64	04/01/25	REVISED
65	05/01/25	REVISED
66	06/01/25	REVISED
67	07/01/25	REVISED
68	08/01/25	REVISED
69	09/01/25	REVISED
70	10/01/25	REVISED
71	11/01/25	REVISED
72	12/01/25	REVISED
73	01/01/26	REVISED
74	02/01/26	REVISED
75	03/01/26	REVISED
76	04/01/26	REVISED
77	05/01/26	REVISED
78	06/01/26	REVISED
79	07/01/26	REVISED
80	08/01/26	REVISED
81	09/01/26	REVISED
82	10/01/26	REVISED
83	11/01/26	REVISED
84	12/01/26	REVISED
85	01/01/27	REVISED
86	02/01/27	REVISED
87	03/01/27	REVISED
88	04/01/27	REVISED
89	05/01/27	REVISED
90	06/01/27	REVISED
91	07/01/27	REVISED
92	08/01/27	REVISED
93	09/01/27	REVISED
94	10/01/27	REVISED
95	11/01/27	REVISED
96	12/01/27	REVISED
97	01/01/28	REVISED
98	02/01/28	REVISED
99	03/01/28	REVISED
100	04/01/28	REVISED

**SITE DEVELOPMENT PLAN**  
Parcel P872  
**BURNING TREE ELEMENTARY SCHOOL**  
Liber 2306 Folio 573  
7TH ELECTION DISTRICT - MONTGOMERY COUNTY - MARYLAND

**MHG** MONTGOMERY COUNTY ARCHITECTS & ENGINEERS, P.C.  
ARCHITECTS & ENGINEERS  
1000 BEECH TREE ROAD  
BETHESDA, MD 20817  
P. 301.698.0020  
F. 301.698.0920  
123 WEST PATRICK ST.  
FREDERICK, MD 21701

**MONTGOMERY COUNTY PUBLIC SCHOOLS**  
BURNING TREE ELEMENTARY SCHOOL  
1000 BEECH TREE ROAD  
BETHESDA, MD 20817

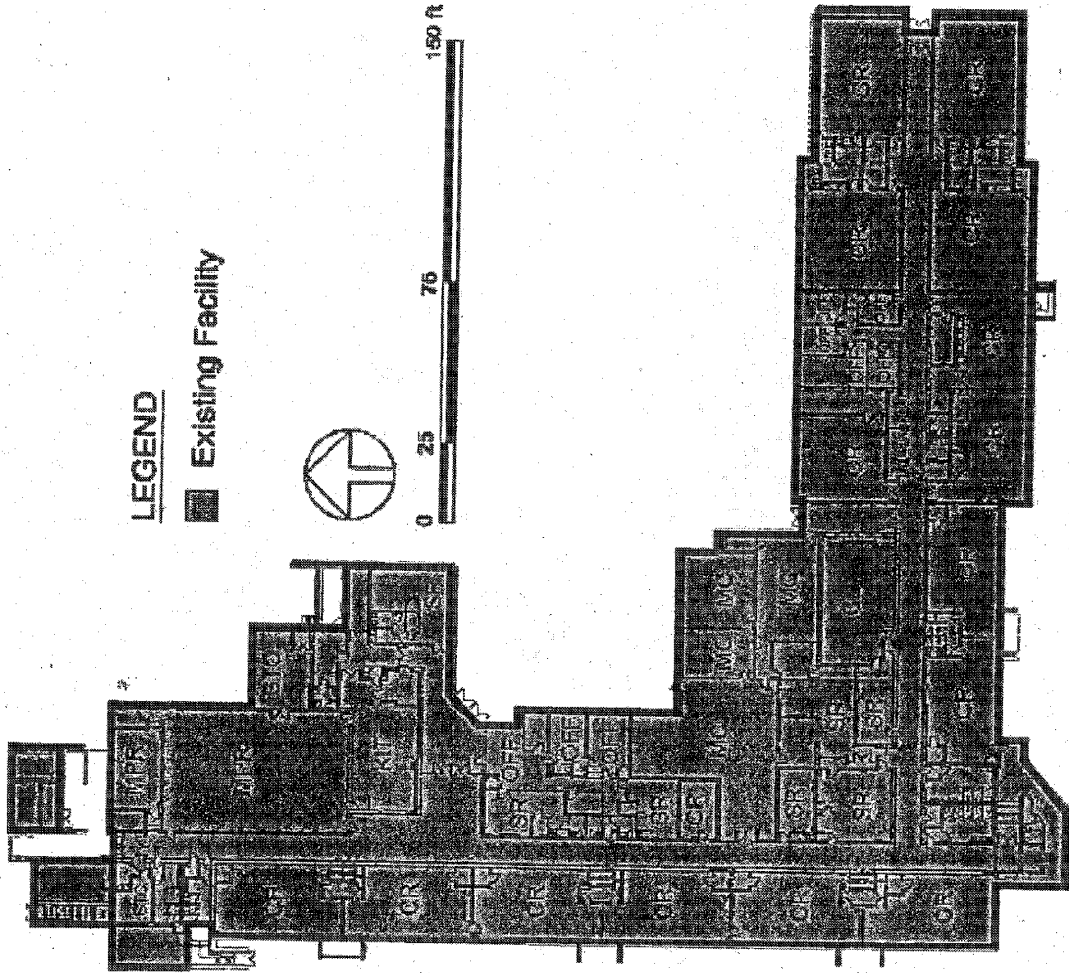
**Z+A+D**  
Zenos Architecture + Design

**PERIODS SHEET**  
DATE: 12/15/23  
BY: [Signature]  
CHECKED: [Signature]  
APPROVED: [Signature]

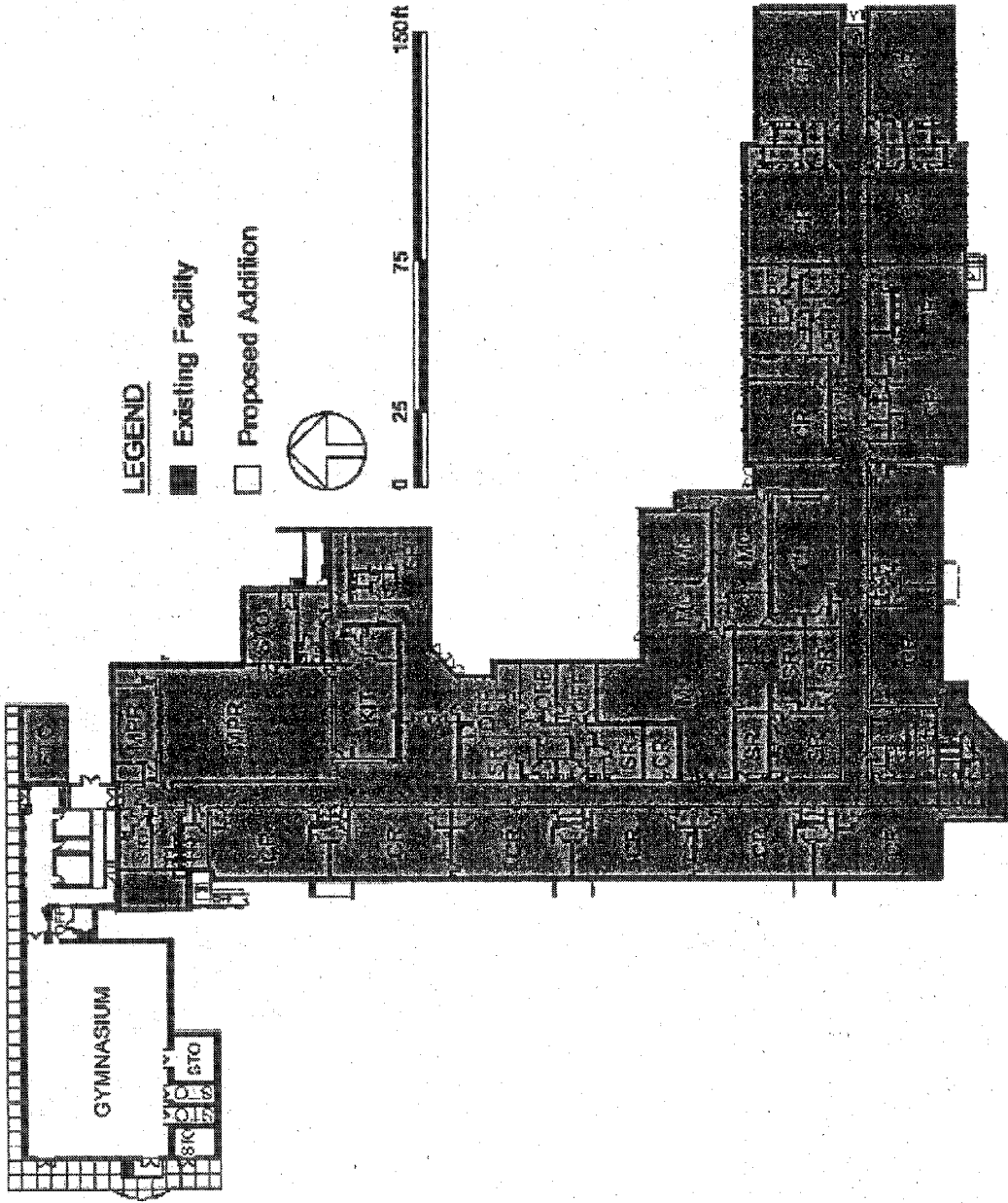
**REVISIONS**

NO.	DATE	DESCRIPTION
1	12/15/23	ISSUED FOR PERMIT
2	12/15/23	REVISED
3	12/15/23	REVISED
4	12/15/23	REVISED
5	12/15/23	REVISED
6	12/15/23	REVISED
7	12/15/23	REVISED
8	12/15/23	REVISED
9	12/15/23	REVISED
10	12/15/23	REVISED
11	12/15/23	REVISED
12	12/15/23	REVISED
13	12/15/23	REVISED
14	12/15/23	REVISED
15	12/15/23	REVISED
16	12/15/23	REVISED
17	12/15/23	REVISED
18	12/15/23	REVISED
19	12/15/23	REVISED
20	12/15/23	REVISED
21	12/15/23	REVISED
22	12/15/23	REVISED
23	12/15/23	REVISED
24	12/15/23	REVISED
25	12/15/23	REVISED
26	12/15/23	REVISED
27	12/15/23	REVISED
28	12/15/23	REVISED
29	12/15/23	REVISED
30	12/15/23	REVISED
31	12/15/23	REVISED
32	12/15/23	REVISED
33	12/15/23	REVISED
34	12/15/23	REVISED
35	12/15/23	REVISED
36	12/15/23	REVISED
37	12/15/23	REVISED
38	12/15/23	REVISED
39	12/15/23	REVISED
40	12/15/23	REVISED
41	12/15/23	REVISED
42	12/15/23	REVISED
43	12/15/23	REVISED
44	12/15/23	REVISED
45	12/15/23	REVISED
46	12/15/23	REVISED
47	12/15/23	REVISED
48	12/15/23	REVISED
49	12/15/23	REVISED
50	12/15/23	REVISED
51	12/15/23	REVISED
52	12/15/23	REVISED
53	12/15/23	REVISED
54	12/15/23	REVISED
55	12/15/23	REVISED
56	12/15/23	REVISED
57	12/15/23	REVISED
58	12/15/23	REVISED
59	12/15/23	REVISED
60	12/15/23	REVISED
61	12/15/23	REVISED
62	12/15/23	REVISED
63	12/15/23	REVISED
64	12/15/23	REVISED
65	12/15/23	REVISED
66	12/15/23	REVISED
67	12/15/23	REVISED
68	12/15/23	REVISED
69	12/15/23	REVISED
70	12/15/23	REVISED
71	12/15/23	REVISED
72	12/15/23	REVISED
73	12/15/23	REVISED
74	12/15/23	REVISED
75	12/15/23	REVISED
76	12/15/23	REVISED
77	12/15/23	REVISED
78	12/15/23	REVISED
79	12/15/23	REVISED
80	12/15/23	REVISED
81	12/15/23	REVISED
82	12/15/23	REVISED
83	12/15/23	REVISED
84	12/15/23	REVISED
85	12/15/23	REVISED
86	12/15/23	REVISED
87	12/15/23	REVISED
88	12/15/23	REVISED
89	12/15/23	REVISED
90	12/15/23	REVISED
91	12/15/23	REVISED
92	12/15/23	REVISED
93	12/15/23	REVISED
94	12/15/23	REVISED
95	12/15/23	REVISED
96	12/15/23	REVISED
97	12/15/23	REVISED
98	12/15/23	REVISED
99	12/15/23	REVISED
100	12/15/23	REVISED

**Existing Floor Plan**



**Proposed Floor Plan**



Proposed Floor Plan Enlarged

