

HOLD EDGE OF EXISTING GUTTER

MONTROSE ROAD

"OLD" OLD GEORGETOWN ROAD

to Rockville Pike

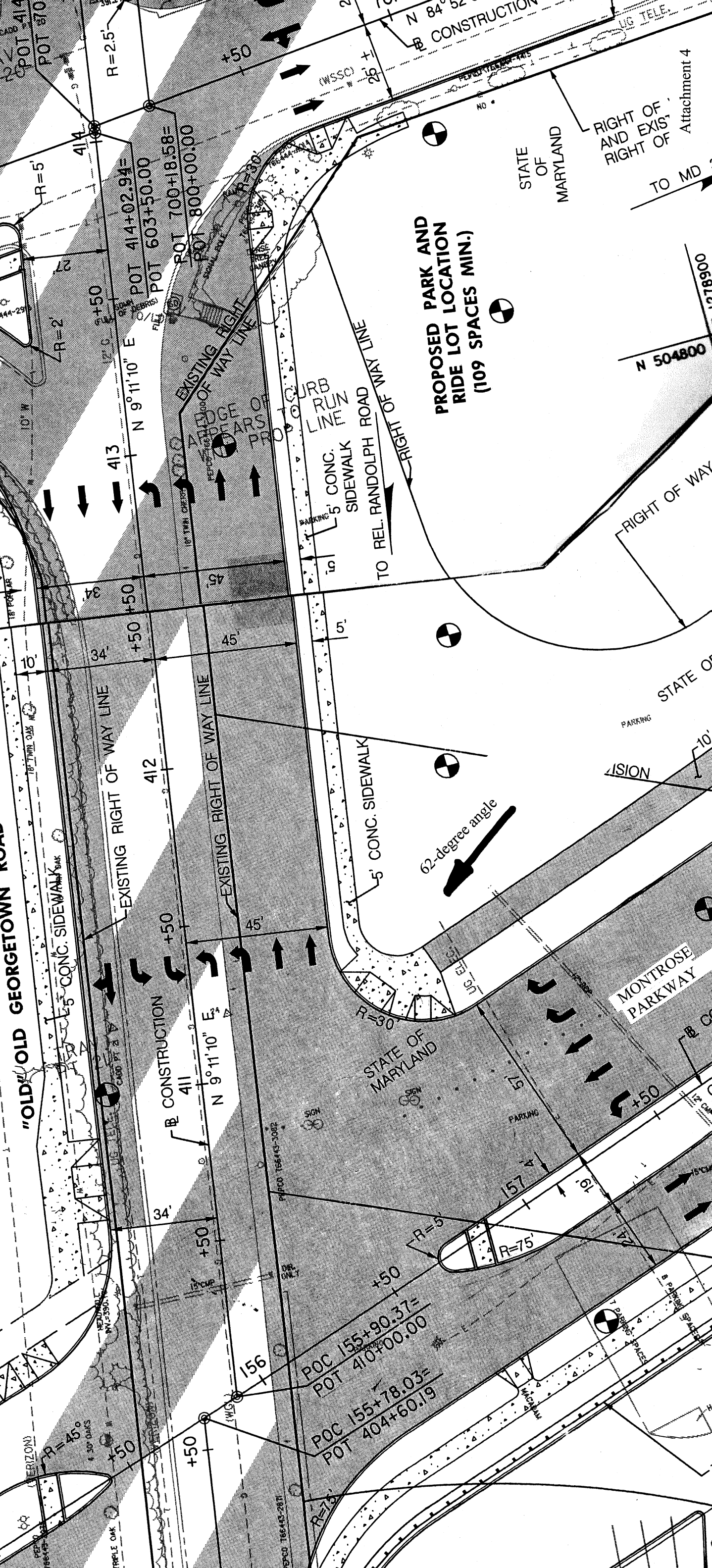
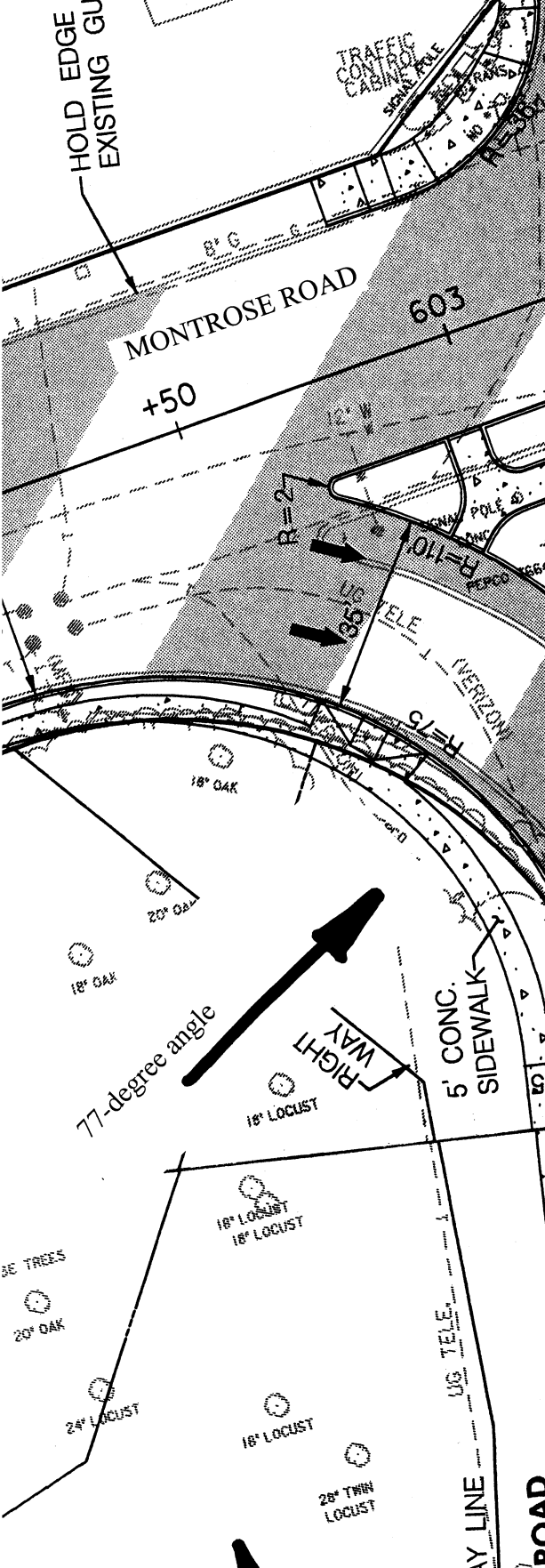
MONTROSE PARKWAY

PROPOSED PARK AND RIDE LOT LOCATION (109 SPACES MIN.)

North

77-degree angle

62-degree angle



POT 414
POT 370

POT 414+02.94=
POT 603+50.00
POT 700+18.58=
POT 800+00.00

POT 155+90.37=
POT 410+00.00
POT 155+78.03=
POT 404+60.19

POT 411
POT 412
POT 413

POT 156
POT 157

R=2.5'

R=5'

R=2'

R=10'

R=2'

R=2'

R=2'

R=2'

R=2'

R=2'

R=2'

R=2'

R=2'

R=2'

R=2'

R=2'

R=2'

R=2'

R=2'

R=2.5'

R=5'

R=2'

R=10'

R=2'

R=2'

R=2'

R=2'

R=2'

R=2'

R=2'

R=2'

R=2'

R=2'

R=2'

R=2'

R=2'

R=2'

R=2'

R=2.5'

R=5'

R=2'

R=10'

R=2'

R=2'

R=2'

R=2'

R=2'

R=2'

R=2'

R=2'

R=2'

R=2'

R=2'

R=2'

R=2'

R=2'

R=2'

R=2.5'

R=5'

R=2'

R=10'

R=2'

R=2'

R=2'

R=2'

R=2'

R=2'

R=2'

R=2'

R=2'

R=2'

R=2'

R=2'

R=2'

R=2'

R=2'