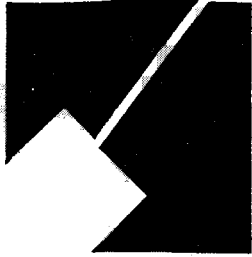


M-NCPPC



MONTGOMERY COUNTY DEPARTMENT OF PARK & PLANNING

THE MARYLAND-NATIONAL CAPITAL
PARK AND PLANNING COMMISSION

8787 Georgia Avenue
Silver Spring, Maryland 20910-3760

11

M E M O R A N D U M

DATE: August 31, 2001
TO: Montgomery County Planning Board
FROM: A. Malcolm Shaneman
Planning Department
(301)495-4587
SUBJECT: Informational Maps for Subdivision Items on the
Planning Board's Agenda for September 6, 2001.

Attached are copies of plan drawings for Items #10, #11, #12 and #13. These subdivision items are scheduled for Planning Board consideration on September 6, 2001. The items are further identified as follows:

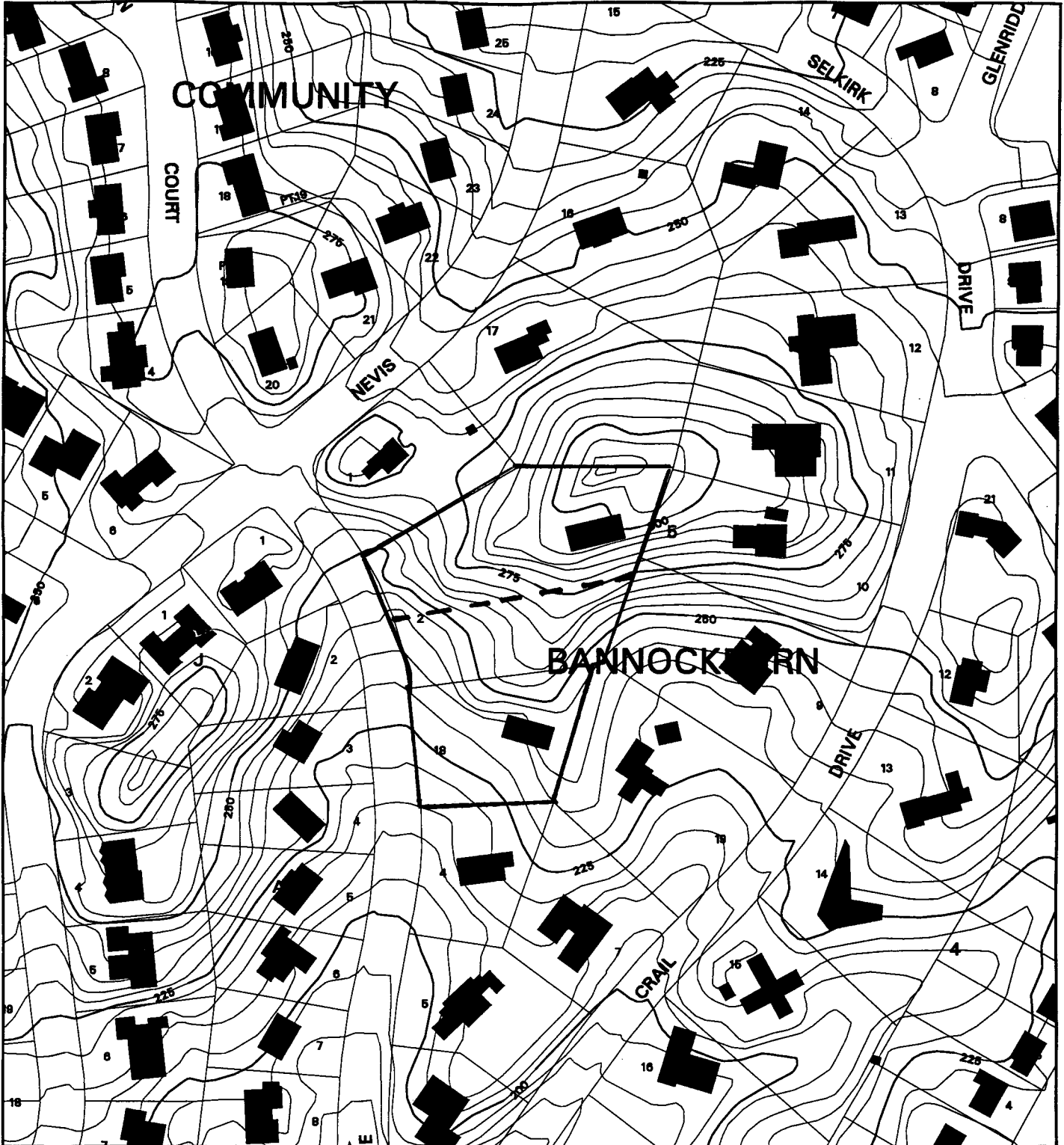
Agenda Item #10 - Preliminary Plan 1-01056
Edwards Ferry Property

Agenda Item #11 - Preliminary Plan 1-01051
Bannockburn

Agenda Item #12 - Preliminary Plan 1-97047E
Silverwood

Agenda Item #13 - Preliminary Plan 1-77082R
Olney Village Mart

VICINITY MAP FOR
BANNOCKBURN (1-01051)



Map compiled on August 31, 2001 at 1:01 PM | Site located on base sheet no - 209NW07

NOTICE

The planimetric, property, and topographic information shown on this map is based on copyrighted Map Products from the Montgomery County Department of Park and Planning of the Maryland-National Capital Park and Planning Commission, and may not be copied or reproduced without written permission from M-NCPPC.

Property lines are compiled by adjusting the property lines to topography created from aerial photography and should not be interpreted as actual field surveys. Planimetric features were compiled from 1:14400 scale aerial photography using stereo photogrammetric methods.

This map is created from a variety of data sources, and may not reflect the most current conditions in any one location and may not be completely accurate or up to date. All map features are approximately within five feet of their true location. This map may not be the same as a map of the same area plotted at an earlier time as the data is continuously updated. Use of this map, other than for general planning purposes is not recommended. - Copyright 1998

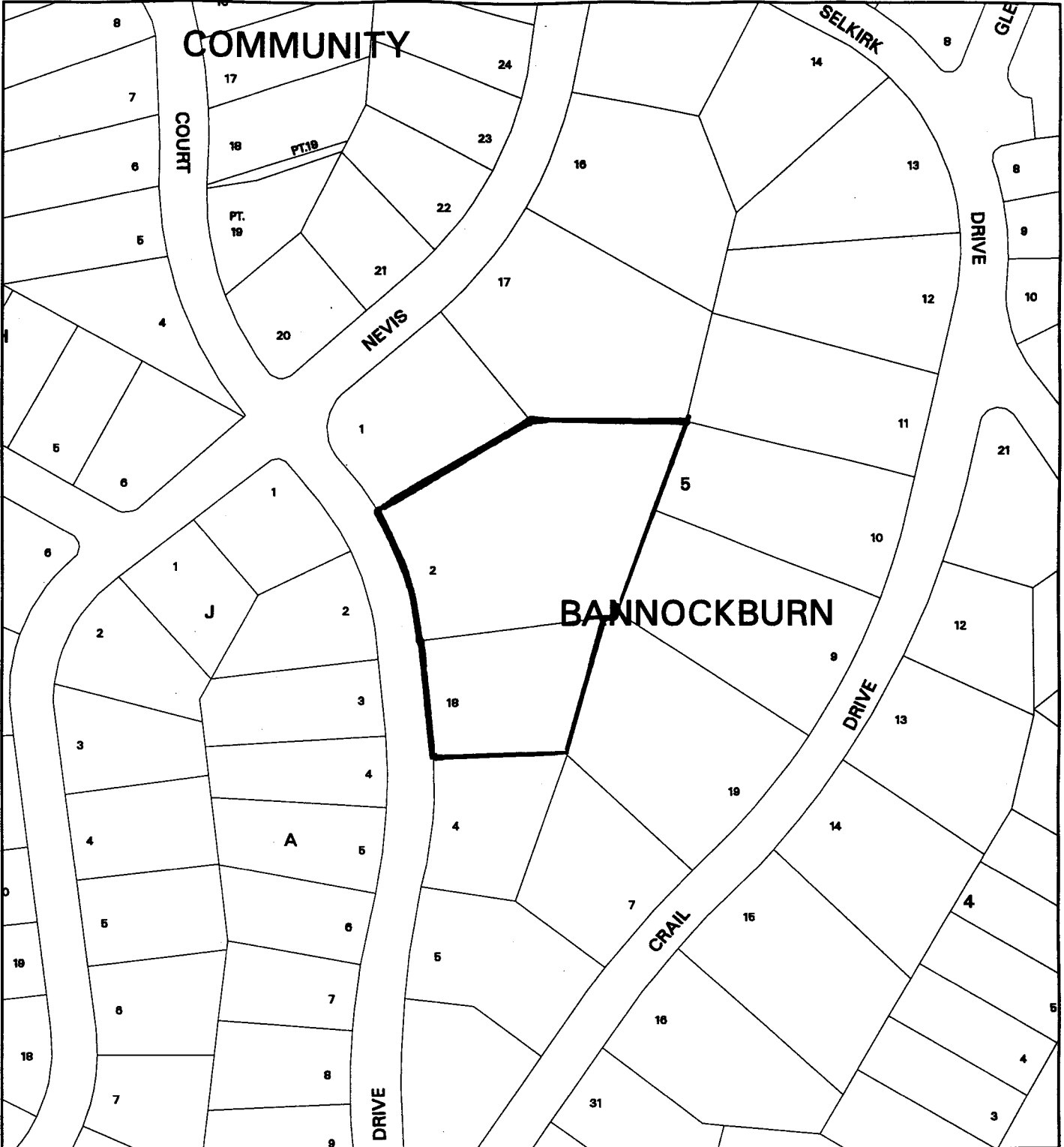
Key Map



1 : 2400

VICINITY MAP FOR

BANNOCKBURN (1-01051)



Map compiled on March 13, 2001 at 8:11 AM | Site located on base sheet no - 209NW07

NOTICE

The planimetric, property, and topographic information shown on this map is based on copyrighted Map Products from the Montgomery County Department of Park and Planning of the Maryland-National Capital Park and Planning Commission, and may not be copied or reproduced without written permission from M-NCPPC.

Property lines are compiled by adjusting the property lines to topography created from aerial photography and should not be interpreted as actual field surveys. Planimetric features were compiled from 1:14400 scale aerial photography using stereo photogrammetric methods.

This map is created from a variety of data sources, and may not reflect the most current conditions in any one location and may not be completely accurate or up to date. All map features are approximately within five feet of their true location. This map may not be the same as a map of the same area plotted at an earlier time as the data is continuously updated. Use of this map, other than for general planning purposes is not recommended. - Copyright 1998

Key Map



N



1 : 2400

