

Item #7



THE MARYLAND-NATIONAL CAPITAL PARK AND PLANNING COMMISSION

MEMORANDUM

DATE: March 01, 2002
TO: Montgomery County Planning Board
FROM: A. Malcolm Shaneman
Development Review Division
(301) 495-4587
SUBJECT: Informational Maps for Subdivision Items on the
Planning Board's Agenda for March 07, 2002.

Attached are copies of plan drawings for Items #06, #07, #08, #09, #10. These subdivision items are scheduled for Planning Board consideration on March 07, 2002. The items are further identified as follows:

Agenda Item #06 - Preliminary Plan 1-01080
The Retreat at Liberty Mill

Agenda Item #07 - Preliminary Plan 1-99001E
Montgomery Chinese Christian Church

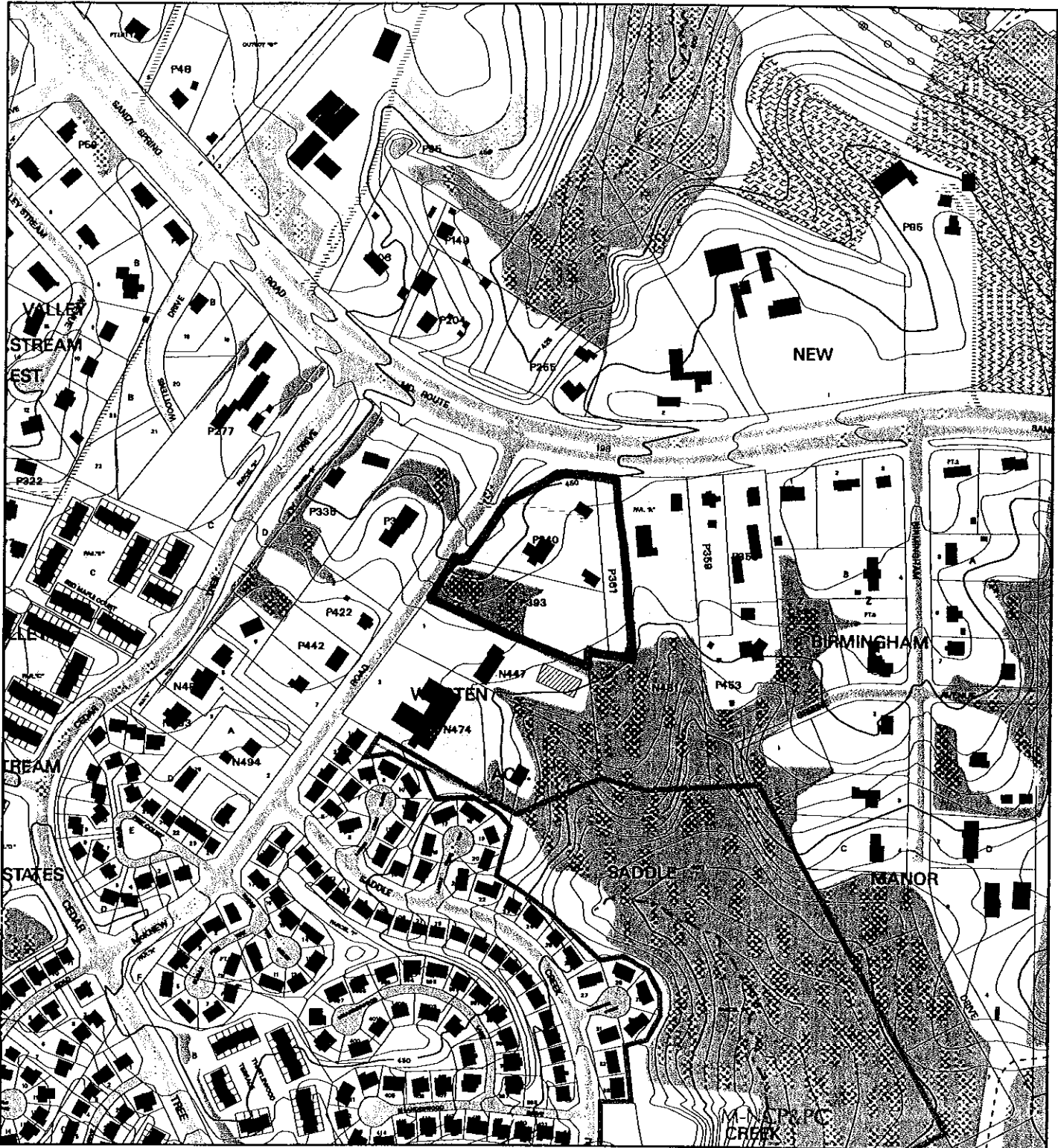
Agenda Item #08 - Preliminary Plan 1-00095
Warfield Property

Agenda Item #09 - Preliminary Plan 1-02046
Sunnymeade

Agenda Item #10 - Preliminary Plan 1-02047
Gladhill Tractor Sales

Attachment

VICINITY MAP FOR
MONTGOMERY CHINESE CHRISTIAN CHURCH (1-99001E)



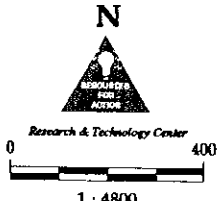
Map compiled on February 28, 2002 at 12:51 PM | Site located on base sheet no - 220NE05

NOTICE

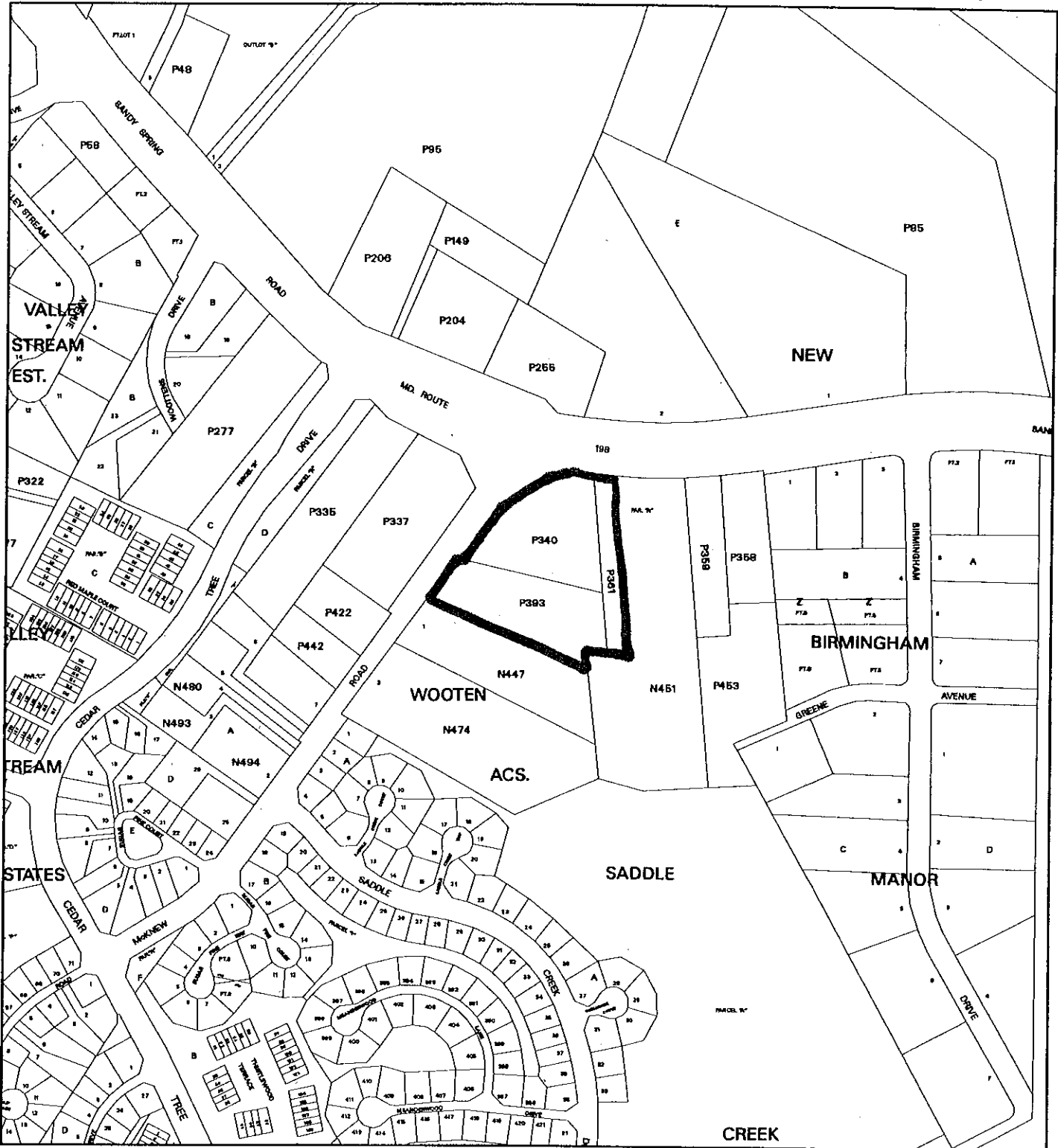
The planimetric, property, and topographic information shown on this map is based on copyrighted Map Products from the Montgomery County Department of Park and Planning of the Maryland-National Capital Park and Planning Commission, and may not be copied or reproduced without written permission from M-NCPPC.

Property lines are compiled by adjusting the property lines to topography created from aerial photography and should not be interpreted as actual field surveys. Planimetric features were compiled from 1:14400 scale aerial photography using stereo photogrammetric methods.

This map is created from a variety of data sources, and may not reflect the most current conditions in any one location and may not be completely accurate or up to date. All map features are approximately within five feet of their true location. This map may not be the same as a map of the same area plotted at an earlier time as the data is continuously updated. Use of this map, other than for general planning purposes is not recommended. - Copyright 1998



VICINITY MAP FOR
MONTGOMERY CHINESE CHRISTIAN CHURCH (1-99001E)



Map compiled on February 28, 2002 at 12:16 PM | Site located on base sheet no - 220NE06

NOTICE

The planimetric, property, and topographic information shown on this map is based on copyrighted Map Products from the Montgomery County Department of Park and Planning of the Maryland-National Capital Park and Planning Commission, and may not be copied or reproduced without written permission from M-NCPPC.

Property lines are compiled by adjusting the property lines to topography created from aerial photography and should not be interpreted as actual field surveys. Planimetric features were compiled from 1:14400 scale aerial photography using stereo photogrammetric methods.

This map is created from a variety of data sources, and may not reflect the most current conditions in any one location and may not be completely accurate or up to date. All map features are approximately within five feet of their true location. This map may not be the same as a map of the same area plotted at an earlier time as the data is continuously updated. Use of this map, other than for general planning purposes is not recommended. - Copyright 1998

