

Item # 8



THE MARYLAND-NATIONAL CAPITAL PARK AND PLANNING COMMISSION

M E M O R A N D U M

DATE: March 01, 2002
TO: Montgomery County Planning Board
FROM: A. Malcolm Shaneman
Development Review Division
(301) 495-4587
SUBJECT: Informational Maps for Subdivision Items on the
Planning Board's Agenda for March 07, 2002.

Attached are copies of plan drawings for Items #06, #07, #08, #09, #10. These subdivision items are scheduled for Planning Board consideration on March 07, 2002. The items are further identified as follows:

- Agenda Item #06 - Preliminary Plan 1-01080
The Retreat at Liberty Mill
- Agenda Item #07 - Preliminary Plan 1-99001E
Montgomery Chinese Christian Church
- Agenda Item #08 - Preliminary Plan 1-00095
Warfield Property
- Agenda Item #09 - Preliminary Plan 1-02046
Sunnymeade
- Agenda Item #10 - Preliminary Plan 1-02047
Gladhill Tractor Sales

Attachment

VICINITY MAP FOR

WARFIELD PROPERTY (1-00095)



Map compiled on June 27, 2000 at 8:18 AM | Site located on base sheet no - 234NW08

NOTICE

The planimetric, property, and topographic information shown on this map is based on copyrighted Map Products from the Montgomery County Department of Park and Planning of the Maryland-National Capital Park and Planning Commission, and may not be copied or reproduced without written permission from M-NCPPC.

Property lines are compiled by adjusting the property lines to topography created from aerial photography and should not be interpreted as actual field surveys. Planimetric features were compiled from 1:14400 scale aerial photography using stereo photogrammetric methods.

This map is created from a variety of data sources, and may not reflect the most current conditions in any one location and may not be completely accurate or up to date. All map features are approximately within five feet of their true location. This map may not be the same as a map of the same area plotted at an earlier time as the data is continuously updated. Use of this map, other than for general planning purposes is not recommended. - Copyright 1998

Key Map



N



Research & Technology Center



1 : 14400

M-NCPPC



MONTGOMERY COUNTY DEPARTMENT OF PARK AND PLANNING
THE MARYLAND-NATIONAL CAPITAL PARK AND PLANNING COMMISSION

8787 Georgia Avenue - Silver Spring, Maryland 20910-3760

VICINITY MAP FOR

WARFIELD PROPERTY (1-00095)



Map compiled on June 27, 2000 at 8:26 AM | Site located on base sheet no - 234NW09

NOTICE

The planimetric, property, and topographic information shown on this map is based on copyrighted Map Products from the Montgomery County Department of Park and Planning of the Maryland-National Capital Park and Planning Commission, and may not be copied or reproduced without written permission from M-NCPPC.

Property lines are compiled by adjusting the property lines to topography created from aerial photography and should not be interpreted as actual field surveys. Planimetric features were compiled from 1:14400 scale aerial photography using stereo photogrammetric methods.

This map is created from a variety of data sources, and may not reflect the most current conditions in any one location and may not be completely accurate or up to date. All map features are approximately within five feet of their true location. This map may not be the same as a map of the same area plotted at an earlier time as the data is continuously updated. Use of this map, other than for general planning purposes is not recommended. - Copyright 1998

Key Map



N



Research & Technology Center



1 : 14400

M-NCPPC



MONTGOMERY COUNTY DEPARTMENT OF PARK AND PLANNING
THE MARYLAND-NATIONAL CAPITAL PARK AND PLANNING COMMISSION

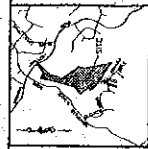
3787 Georgia Avenue - Silver Spring, Maryland 20910-3760

DATE	DESCRIPTION
1/15/11	PRELIMINARY PLAN
2/10/11	REVISED PLAN
3/15/11	REVISED PLAN
4/20/11	REVISED PLAN
5/25/11	REVISED PLAN
6/30/11	REVISED PLAN
7/31/11	REVISED PLAN
8/31/11	REVISED PLAN
9/30/11	REVISED PLAN
10/31/11	REVISED PLAN
11/30/11	REVISED PLAN
12/31/11	REVISED PLAN

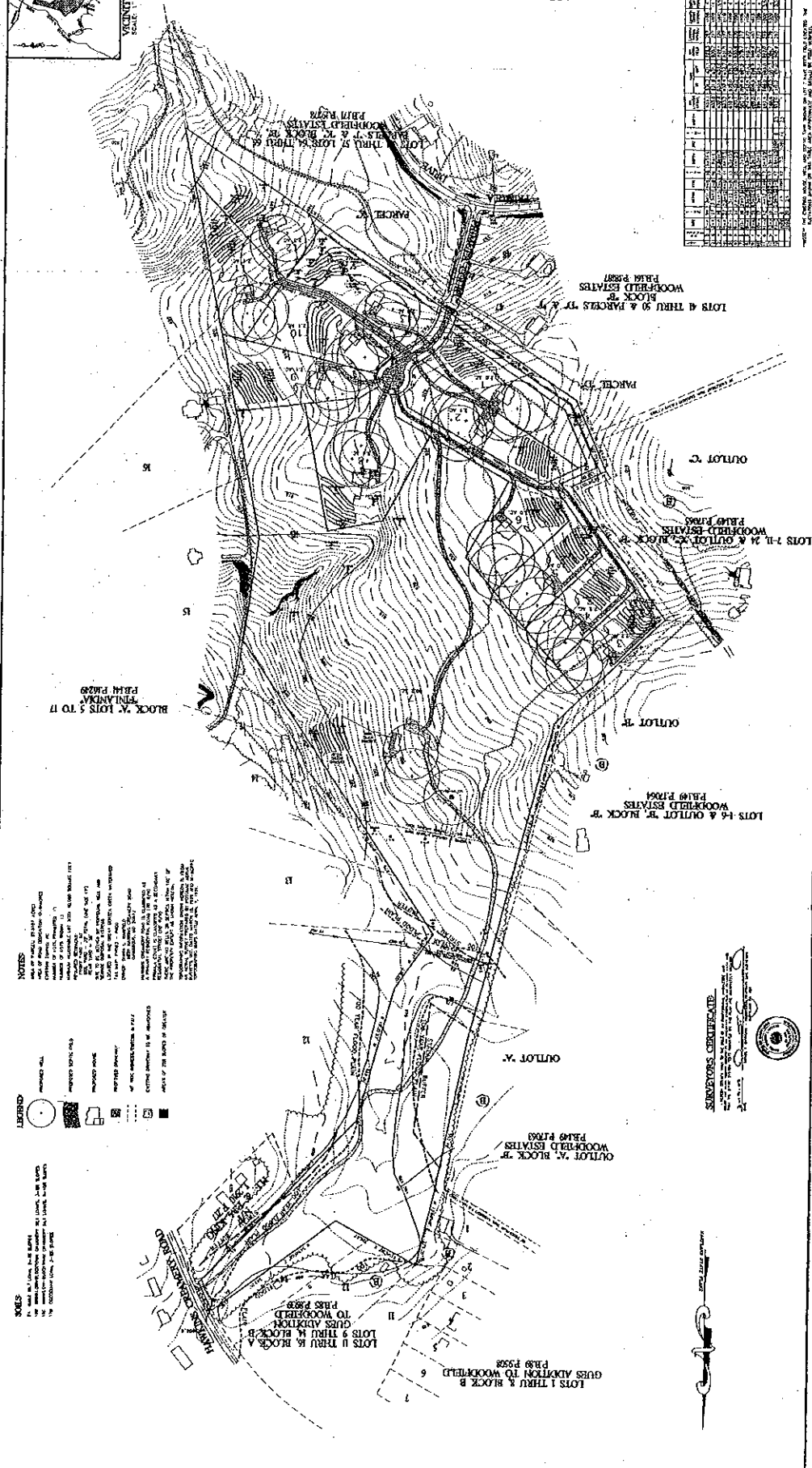
DANA L. WARREN PROPERTY
 LIBER 3022 VOLUME 33

PRELIMINARY PLAN

ENGINEERS & SURVEYORS
MADDOX
 1120 N. STATE STREET
 SUITE 100
 RICHMOND, VIRGINIA 23219
 (804) 353-2200



LOT	ACRES	REMARKS
1		
2		
3		
4		
5		
6		
7		
8		
9		
10		
11		
12		
13		
14		
15		
16		
17		
18		
19		
20		
21		
22		
23		
24		
25		
26		
27		
28		
29		
30		
31		
32		
33		
34		
35		
36		
37		
38		
39		
40		
41		
42		
43		
44		
45		
46		
47		
48		
49		
50		
51		
52		
53		
54		
55		
56		
57		
58		
59		
60		
61		
62		
63		
64		
65		
66		
67		
68		
69		
70		
71		
72		
73		
74		
75		
76		
77		
78		
79		
80		
81		
82		
83		
84		
85		
86		
87		
88		
89		
90		
91		
92		
93		
94		
95		
96		
97		
98		
99		
100		



NOTES

1. ALL DIMENSIONS ARE AS SHOWN ON THIS PLAN.
2. THIS PLAN IS A PRELIMINARY PLAN AND IS NOT TO BE USED FOR CONSTRUCTION.
3. THE BOUNDARIES SHOWN ON THIS PLAN ARE BASED ON THE SURVEY DATA PROVIDED TO THE ENGINEER.
4. THE ENGINEER HAS NOT CONDUCTED A FIELD SURVEY TO VERIFY THE ACCURACY OF THE SURVEY DATA.
5. THIS PLAN IS SUBJECT TO ALL APPLICABLE LAWS, REGULATIONS, AND ORDINANCES.
6. THE ENGINEER IS NOT RESPONSIBLE FOR ANY CONSTRUCTION DEFECTS OR OMISSIONS.
7. THE ENGINEER HAS NOT CONDUCTED A GEOLOGICAL SURVEY.
8. THE ENGINEER HAS NOT CONDUCTED A SOIL TEST.
9. THE ENGINEER HAS NOT CONDUCTED A HYDROLOGICAL SURVEY.
10. THE ENGINEER HAS NOT CONDUCTED A VEGETATION SURVEY.
11. THE ENGINEER HAS NOT CONDUCTED A HISTORY ARCHAEOLGY SURVEY.
12. THE ENGINEER HAS NOT CONDUCTED A UTILITY SURVEY.
13. THE ENGINEER HAS NOT CONDUCTED A TRANSPORTATION SURVEY.
14. THE ENGINEER HAS NOT CONDUCTED A VISUAL QUALITY ANALYSIS.
15. THE ENGINEER HAS NOT CONDUCTED A CULTURAL RESOURCE SURVEY.
16. THE ENGINEER HAS NOT CONDUCTED A HISTORIC ARCHAEOLGY SURVEY.
17. THE ENGINEER HAS NOT CONDUCTED A PALEONTOLOGY SURVEY.
18. THE ENGINEER HAS NOT CONDUCTED A PLANT AND ANIMAL SURVEY.
19. THE ENGINEER HAS NOT CONDUCTED A SPECIAL USE SURVEY.
20. THE ENGINEER HAS NOT CONDUCTED A SEISMIC SURVEY.
21. THE ENGINEER HAS NOT CONDUCTED A FLOOD HAZARD SURVEY.
22. THE ENGINEER HAS NOT CONDUCTED A LANDSLIDE SURVEY.
23. THE ENGINEER HAS NOT CONDUCTED A COASTAL EROSION SURVEY.
24. THE ENGINEER HAS NOT CONDUCTED A WETLAND SURVEY.
25. THE ENGINEER HAS NOT CONDUCTED A WETLAND Delineation SURVEY.
26. THE ENGINEER HAS NOT CONDUCTED A WETLAND RESTORATION SURVEY.
27. THE ENGINEER HAS NOT CONDUCTED A WETLAND MITIGATION SURVEY.
28. THE ENGINEER HAS NOT CONDUCTED A WETLAND MONITORING SURVEY.
29. THE ENGINEER HAS NOT CONDUCTED A WETLAND MANAGEMENT SURVEY.
30. THE ENGINEER HAS NOT CONDUCTED A WETLAND EVALUATION SURVEY.
31. THE ENGINEER HAS NOT CONDUCTED A WETLAND RESEARCH SURVEY.
32. THE ENGINEER HAS NOT CONDUCTED A WETLAND EDUCATION SURVEY.
33. THE ENGINEER HAS NOT CONDUCTED A WETLAND OUTREACH SURVEY.
34. THE ENGINEER HAS NOT CONDUCTED A WETLAND PARTNERSHIP SURVEY.
35. THE ENGINEER HAS NOT CONDUCTED A WETLAND COLLABORATION SURVEY.
36. THE ENGINEER HAS NOT CONDUCTED A WETLAND INTEGRATION SURVEY.
37. THE ENGINEER HAS NOT CONDUCTED A WETLAND SYNTHESIS SURVEY.
38. THE ENGINEER HAS NOT CONDUCTED A WETLAND RECOMMENDATION SURVEY.
39. THE ENGINEER HAS NOT CONDUCTED A WETLAND REPORT SURVEY.
40. THE ENGINEER HAS NOT CONDUCTED A WETLAND DELIVERABLE SURVEY.

Surveyor's Certificate

 Surveyor

NOTES

1. ALL DIMENSIONS ARE AS SHOWN ON THIS PLAN.
2. THIS PLAN IS A PRELIMINARY PLAN AND IS NOT TO BE USED FOR CONSTRUCTION.
3. THE BOUNDARIES SHOWN ON THIS PLAN ARE BASED ON THE SURVEY DATA PROVIDED TO THE ENGINEER.
4. THE ENGINEER HAS NOT CONDUCTED A FIELD SURVEY TO VERIFY THE ACCURACY OF THE SURVEY DATA.
5. THIS PLAN IS SUBJECT TO ALL APPLICABLE LAWS, REGULATIONS, AND ORDINANCES.
6. THE ENGINEER IS NOT RESPONSIBLE FOR ANY CONSTRUCTION DEFECTS OR OMISSIONS.
7. THE ENGINEER HAS NOT CONDUCTED A GEOLOGICAL SURVEY.
8. THE ENGINEER HAS NOT CONDUCTED A SOIL TEST.
9. THE ENGINEER HAS NOT CONDUCTED A HYDROLOGICAL SURVEY.
10. THE ENGINEER HAS NOT CONDUCTED A VEGETATION SURVEY.
11. THE ENGINEER HAS NOT CONDUCTED A HISTORY ARCHAEOLGY SURVEY.
12. THE ENGINEER HAS NOT CONDUCTED A UTILITY SURVEY.
13. THE ENGINEER HAS NOT CONDUCTED A TRANSPORTATION SURVEY.
14. THE ENGINEER HAS NOT CONDUCTED A VISUAL QUALITY ANALYSIS.
15. THE ENGINEER HAS NOT CONDUCTED A CULTURAL RESOURCE SURVEY.
16. THE ENGINEER HAS NOT CONDUCTED A HISTORIC ARCHAEOLGY SURVEY.
17. THE ENGINEER HAS NOT CONDUCTED A PALEONTOLOGY SURVEY.
18. THE ENGINEER HAS NOT CONDUCTED A PLANT AND ANIMAL SURVEY.
19. THE ENGINEER HAS NOT CONDUCTED A SPECIAL USE SURVEY.
20. THE ENGINEER HAS NOT CONDUCTED A SEISMIC SURVEY.
21. THE ENGINEER HAS NOT CONDUCTED A FLOOD HAZARD SURVEY.
22. THE ENGINEER HAS NOT CONDUCTED A LANDSLIDE SURVEY.
23. THE ENGINEER HAS NOT CONDUCTED A COASTAL EROSION SURVEY.
24. THE ENGINEER HAS NOT CONDUCTED A WETLAND SURVEY.
25. THE ENGINEER HAS NOT CONDUCTED A WETLAND Delineation SURVEY.
26. THE ENGINEER HAS NOT CONDUCTED A WETLAND RESTORATION SURVEY.
27. THE ENGINEER HAS NOT CONDUCTED A WETLAND MITIGATION SURVEY.
28. THE ENGINEER HAS NOT CONDUCTED A WETLAND MONITORING SURVEY.
29. THE ENGINEER HAS NOT CONDUCTED A WETLAND MANAGEMENT SURVEY.
30. THE ENGINEER HAS NOT CONDUCTED A WETLAND EVALUATION SURVEY.
31. THE ENGINEER HAS NOT CONDUCTED A WETLAND RESEARCH SURVEY.
32. THE ENGINEER HAS NOT CONDUCTED A WETLAND EDUCATION SURVEY.
33. THE ENGINEER HAS NOT CONDUCTED A WETLAND OUTREACH SURVEY.
34. THE ENGINEER HAS NOT CONDUCTED A WETLAND PARTNERSHIP SURVEY.
35. THE ENGINEER HAS NOT CONDUCTED A WETLAND COLLABORATION SURVEY.
36. THE ENGINEER HAS NOT CONDUCTED A WETLAND INTEGRATION SURVEY.
37. THE ENGINEER HAS NOT CONDUCTED A WETLAND SYNTHESIS SURVEY.
38. THE ENGINEER HAS NOT CONDUCTED A WETLAND RECOMMENDATION SURVEY.
39. THE ENGINEER HAS NOT CONDUCTED A WETLAND REPORT SURVEY.
40. THE ENGINEER HAS NOT CONDUCTED A WETLAND DELIVERABLE SURVEY.