

Item #9



THE MARYLAND-NATIONAL CAPITAL PARK AND PLANNING COMMISSION

**M E M O R A N D U M**

**DATE:** July 26, 2002  
**TO:** Montgomery County Planning Board  
**FROM:** A. Malcolm Shaneman  
Development Review Division  
(301) 495-4587  
**SUBJECT:** Informational Maps for Subdivision Items on the  
Planning Board's Agenda for August 1, 2002.

---

Attached are copies of plan drawings for Items #09, #11, #13, #14, #15, #16. These subdivision items are scheduled for Planning Board consideration on August 1, 2002. The items are further identified as follows:

Agenda Item #09 - Preliminary Plan 1-02086  
Layhill Village

Agenda Item #11 - Preliminary Plan 1-02109  
Plyers Mill Estates

Agenda Item #13 - Preliminary Plan 1-02106  
Chestnut Hills-Johnson's Addition

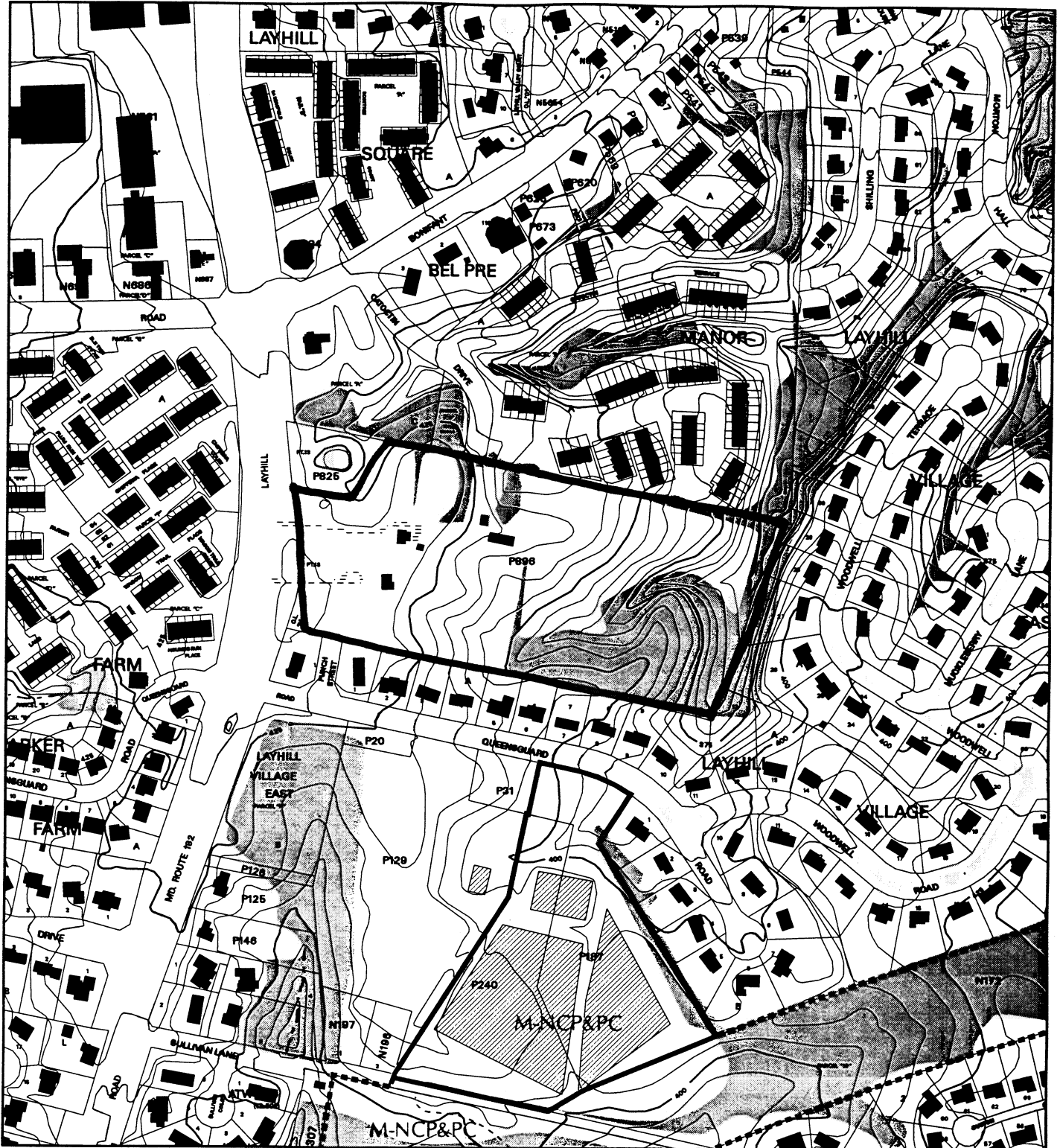
Agenda Item #14 - Preliminary Plan 1-02032  
Jones Property

Agenda Item #15 - Preliminary Plan 1-02110  
Selborne House at Saint Mark's

Agenda Item #16 - Preliminary Plan 1-02075  
Inverness Forest

Attachment

VICINITY MAP FOR  
**LAYHILL VILLAGE (1-02086)**



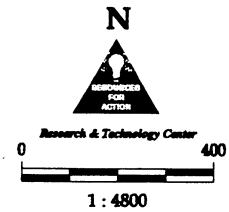
Map compiled on July 26, 2002 at 9:28 AM | Site located on base sheet no - 219NW02

**NOTICE**

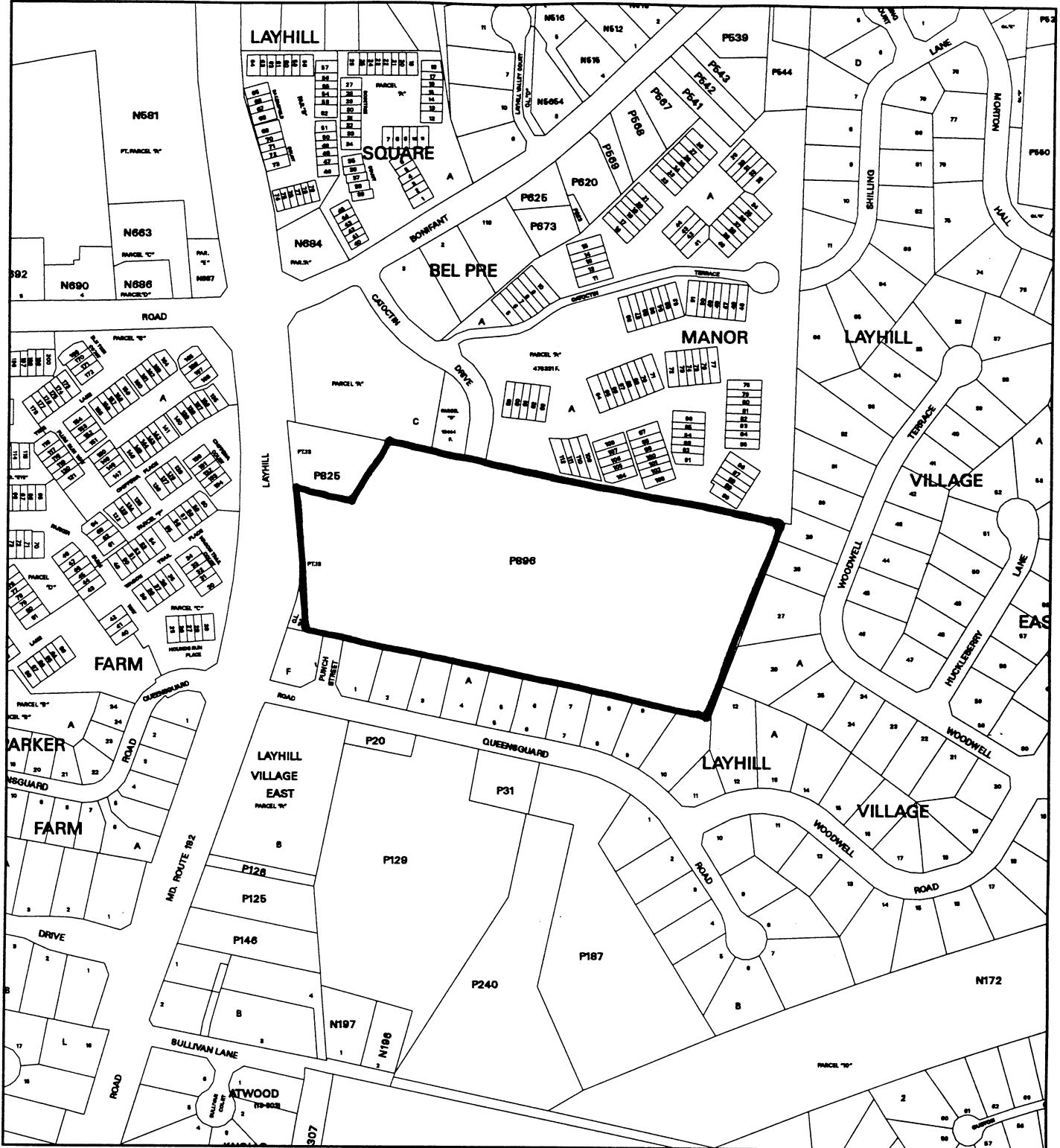
The planimetric, property, and topographic information shown on this map is based on copyrighted Map Products from the Montgomery County Department of Park and Planning of the Maryland -National Capital Park and Planning Commission, and may not be copied or reproduced without written permission from M-NCPPC.

Property lines are compiled by adjusting the property-lines to topography created from aerial photography and should not be interpreted as actual field surveys. Planimetric features were compiled from 1:14400 scale aerial photography using stereo photogrammetric methods.

This map is created from a variety of data sources, and may not reflect the most current conditions in any one location and may not be completely accurate or up to date. All map features are approximately within five feet of their true location. This map may not be the same as a map of the same area plotted at an earlier time as the data is continuously updated. Use of this map, other than for general planning purposes is not recommended. - Copyright 1998



VICINITY MAP FOR  
**LAYHILL VILLAGE (1-02086)**



Map compiled on July 24, 2002 at 6:42 PM | Site located on base sheet no - 219NW02

**NOTICE**

The planimetric, property, and topographic information shown on this map is based on copyrighted Map Products from the Montgomery County Department of Park and Planning of the Maryland-National Capital Park and Planning Commission, and may not be copied or reproduced without written permission from M-NCPPC.

Property lines are compiled by adjusting the property lines to topography created from aerial photography and should not be interpreted as actual field surveys. Planimetric features were compiled from 1:14400 scale aerial photography using stereo photogrammetric methods.

This map is created from a variety of data sources, and may not reflect the most current conditions in any one location and may not be completely accurate or up to date. All map features are approximately within five feet of their true location. This map may not be the same as a map of the same area plotted at an earlier time as the data is continuously updated. Use of this map, other than for general planning purposes is not recommended. - Copyright 1998

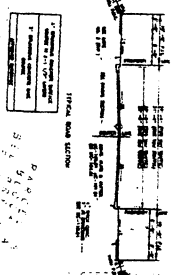
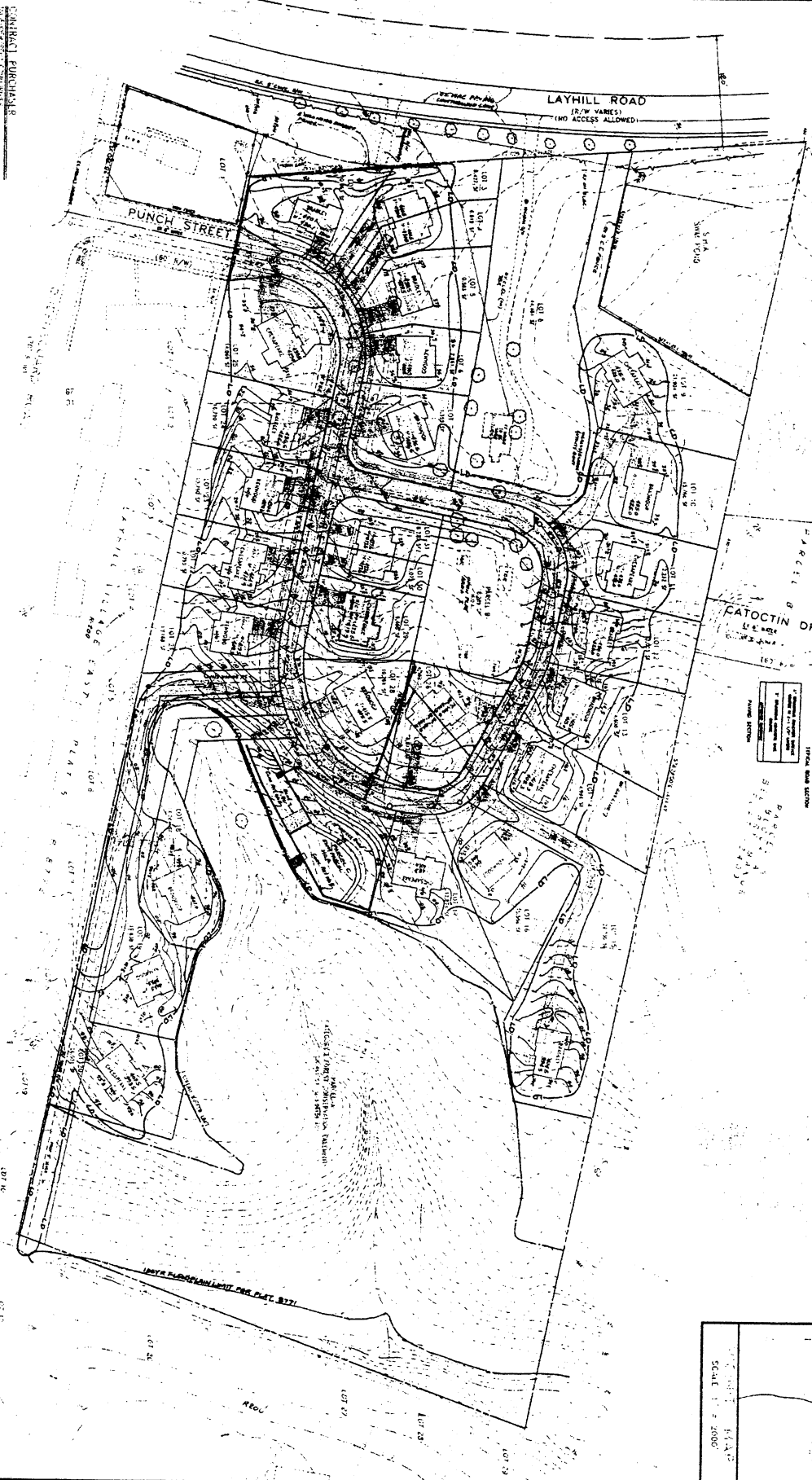
Key Map

N

Research & Technology Center

1 : 4800

As Shown, Terrain  
Contours are  
from 1950



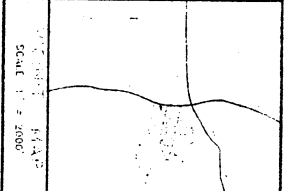
ADDITIONAL LOT  
REMARKS, SEE  
STANDARD NO. MC-210-03

5100  
John R. Bell

PRELIMINARY SITE PLAN  
OTS 2 THRU 31 - BLOCK 4  
LAYHILL VILLAGE EAST

RECORDED IN LIBER 692 AT FOLIO 257

P. G. ASSOCIATES, INC.  
CIVIL ENGINEERS \* SURVEYORS \* LAND PLANNERS



SCALE 1" = 2000'