

Item # 8



THE MARYLAND-NATIONAL CAPITAL PARK AND PLANNING COMMISSION

M E M O R A N D U M

DATE: January 24, 2003
TO: Montgomery County Planning Board
FROM: A. Malcolm Shaneman
Development Review Division
(301) 495-4587
SUBJECT: Informational Maps for Subdivision Items on the
Planning Board's Agenda for January 30, 2003.

Attached are copies of plan drawings for Items #06, #07 #08. These subdivision items are scheduled for Planning Board consideration on January 30, 2003. The items are further identified as follows:

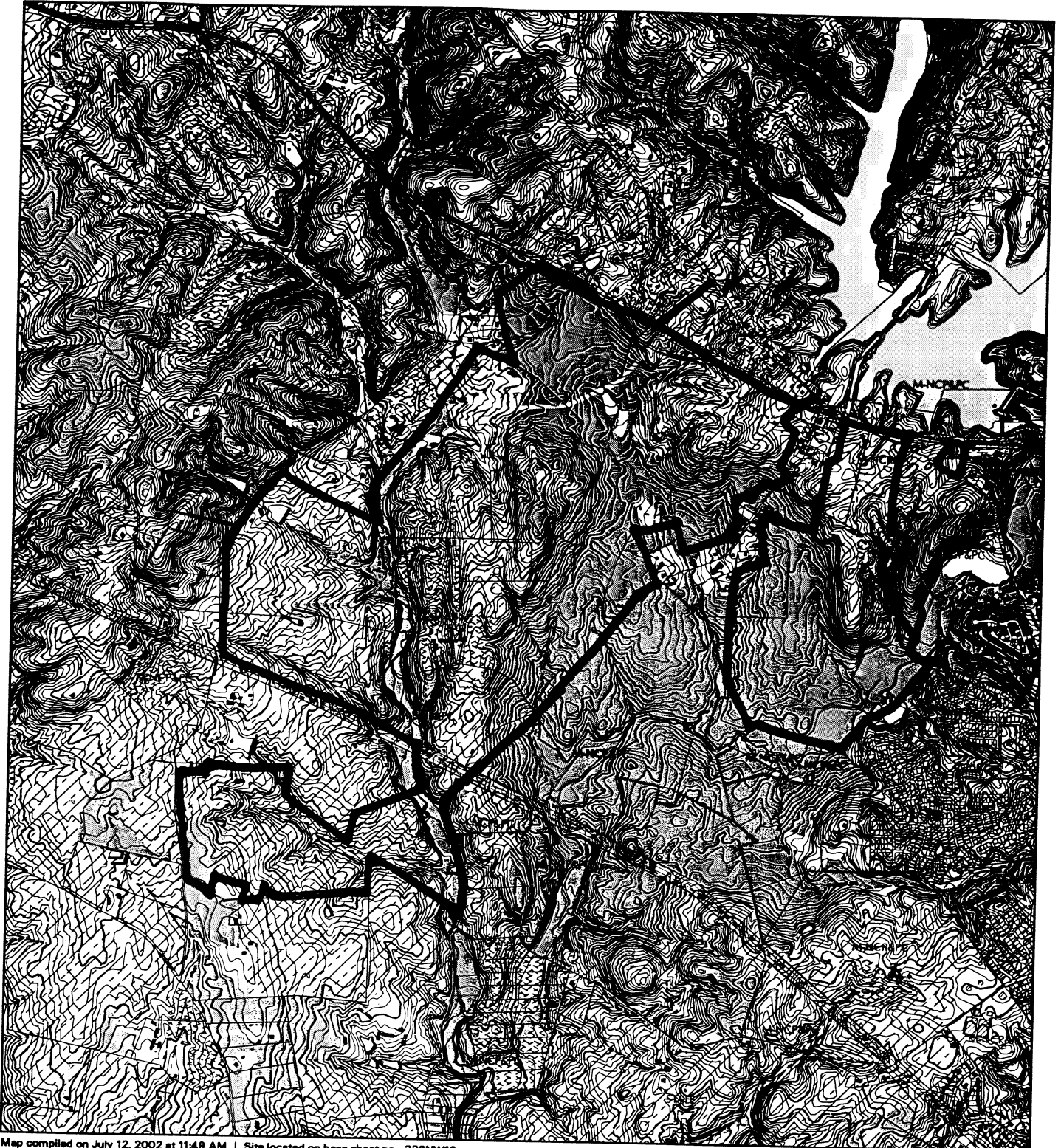
Agenda Item #06 - Preliminary Plan 1-99001E
Montgomery Chinese Christian Church

Agenda Item #07 - Preliminary Plan 1-03030
Harry M. Martin Tract

Agenda Item #08 - Pre-Preliminary Plan 7-02058R
MDR Property

Attachment

VICINITY MAP FOR
MDR PROPERTIES (7-02058)



Map compiled on July 12, 2002 at 11:48 AM | Site located on base sheet no - 228NW16

NOTICE

The planimetric, property, and topographic information shown on this map is based on copyrighted Map Products from the Montgomery County Department of Park and Planning of the Maryland -National Capital Park and Planning Commission, and may not be copied or reproduced without written permission from M-NCPPC.

Property lines are compiled by adjusting the property lines to topography created from aerial photography and should not be interpreted as actual field surveys. Planimetric features were compiled from 1:14400 scale aerial photography using stereo photogrammetric methods.

This map is created from a variety of data sources, and may not reflect the most current conditions in any one location and may not be completely accurate or up to date. All map features are approximately within five feet of their true location. This map may not be the same as a map of the same area plotted at an earlier time as the data is continuously updated. Use of this map, other than for general planning purposes is not recommended. - Copyright 1998

Key Map

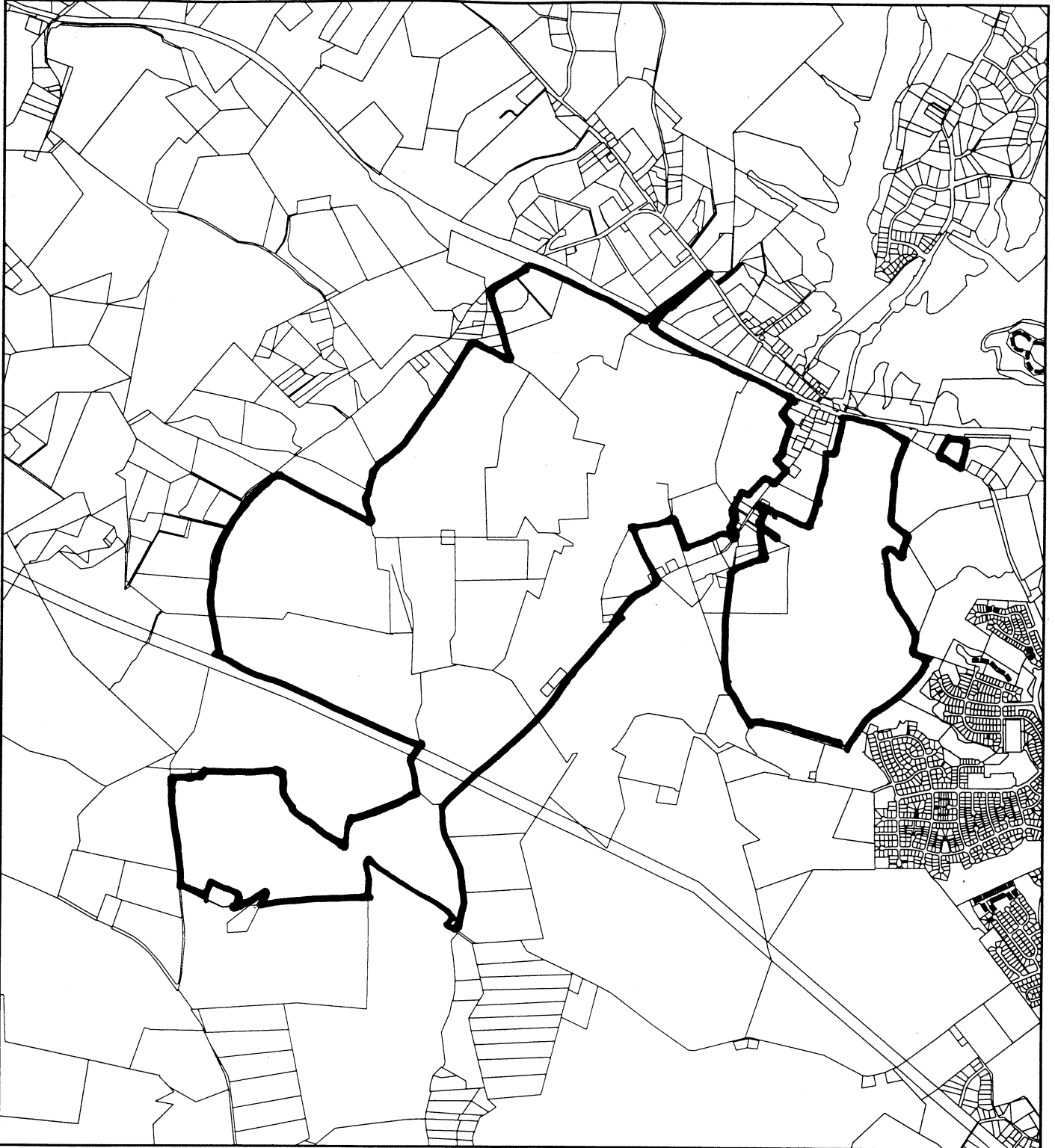


N



1: 36000

VICINITY MAP FOR
MDR PROPERTIES (7-02058)



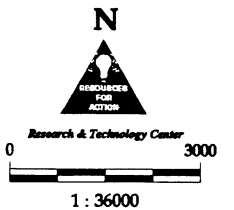
Map compiled on July 12, 2002 at 11:08 AM | Site located on base sheet no - 226NW16

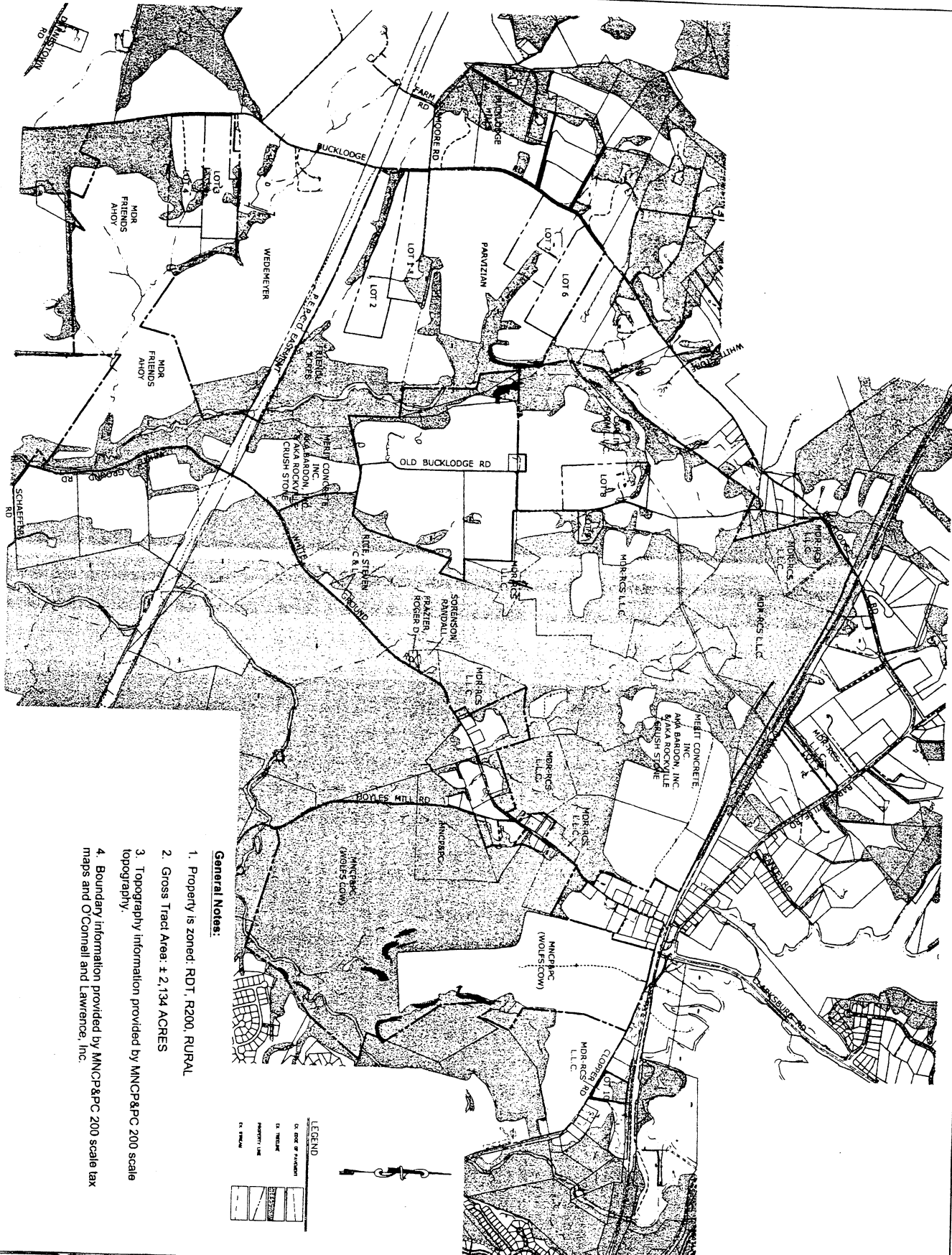
NOTICE

The planimetric, property, and topographic information shown on this map is based on copyrighted Map Products from the Montgomery County Department of Park and Planning of the Maryland - National Capital Park and Planning Commission, and may not be copied or reproduced without written permission from M-NCPPC.

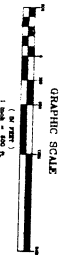
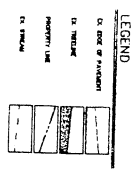
Property lines are compiled by adjusting the property lines to topography created from aerial photography and should not be interpreted as actual field surveys. Planimetric features were compiled from 1:14400 scale aerial photography using stereo photogrammetric methods.

This map is created from a variety of data sources, and may not reflect the most current conditions in any one location and may not be completely accurate or up to date. All map features are approximately within five feet of their true location. This map may not be the same as a map of the same area plotted at an earlier time as the data is continuously updated. Use of this map, other than for general planning purposes is not recommended. - Copyright 1998





- General Notes:**
1. Property is zoned: RDT, R200, RURAL
 2. Gross Tract Area: ± 2,134 ACRES
 3. Topography information provided by MNC&PC 200 scale topography.
 4. Boundary information provided by MNC&PC 200 scale tax maps and O'Connell and Lawrence, Inc.



PHRA

Professional Engineer
 License No. 10000
 State of Maryland

DATE: 11/1/2002
 SCALE: 1"=400'
 SHEET: 1 OF 2

**PRE-PRELIMINARY PLAN
 COMPOSITE SHEET**

MDR PROPERTIES

LOTS 1-10
 A MICHAEL RUBEN PROJECT

11TH ELECTION DISTRICT
 MONTGOMERY COUNTY, MARYLAND

No.	REVISION	DATE	BY

OWNER / DEVELOPER:

MICHAEL RUBEN
 ATTN: PAT SMITH
 6310 FRIENDSHIP COURT
 BETHESDA, MARYLAND 20817
 PHONE: (301) 530-8152
 FAX: (301) 530-8151

Patton Harris Rust & Associates, pc
 Engineers, Surveyors, Planners, Landscape Architects.
 6818 Centre Park Drive, Suite 200 Columbia, MD 21045
 T: 410.997.8900 F: 410.997.9222

VICINITY MAP
 SCALE: 1"=4000'