

**RESOLUTION**  
**FOR**  
**RESERVATION OF LAND FOR PUBLIC USE**

WHEREAS, The Callithea Farm, a Maryland Limited Liability Company is the owner of certain lands comprising 92.74 acres, more or less, improved, situated in Montgomery County, Maryland, Election District No. 6, located south of River Road and east of Manor Stone Drive, said lands having been conveyed to The Callithea Farm, LLC by deed dated April 30, 1999, and recorded among the Land Records of Montgomery County, Maryland, in Liber 17773 at Folio 579; and

WHEREAS, the said property lies within the proposed Callithea Farm Special Park as shown upon the Approved and Adopted Potomac Subregion Master Plan, as amended, by the Maryland-National Capital Park and Planning Commission after public hearings as a part of the General Plan of the Maryland-Washington Regional District, pursuant to the provisions of Article 28 of the Annotated Code of Maryland; and

WHEREAS, the said Callithea Farm Special Park is deemed an important addition to the park system to serve Montgomery County, and the said property is accordingly required for public use; and

WHEREAS, studies and field reconnaissance made by staff of the Park and Planning Commission indicate the feasibility of creating this park as shown on plans prepared by the technical staff of this Commission and emphasize the need to preserve the required property against loss or encroachment;

NOW, THEREFORE, BE IT RESOLVED that, pursuant to the provisions of Article 28 of The Annotated Code of Maryland, and the Regulations for the Subdivision of Land for the Maryland-Washington Regional District in Montgomery County, Maryland, adopted by the Montgomery County Council October 17, 1961, and by virtue of its authority to administer said regulations, the Montgomery County Planning Board of the Maryland-National Capital Park and Planning Commission hereby declares the above-described land, comprising 92.74 acres, more or less, to be a Reservation of Land for Public Use, said land to be used for the proposed Callithea Farm Special Park; and

BE IT FURTHER RESOLVED that certified copies of this Resolution be transmitted to the Supervisor of Assessments and the Director of Finance of Montgomery County and to the Washington Suburban Sanitary Commission, advising said offices of the tax abatement provisions of Article 28 of the Annotated Code of Maryland, with re-

spect to such Reservation of Land for Public Use, so that the land so reserved may be exempted from the levy of State and County taxes for a period of three years beginning July 1, 2003; and

BE IT FURTHER RESOLVED that a certified copy of this Resolution be transmitted to the property owners; and

BE IT FURTHER RESOLVED that the appropriate Reservation Plat covering the aforesaid property, shall be duly certified by this Commission, certified by its authorized representatives, and duly recorded among the Land Records of Montgomery County, Maryland; and

BE IT FURTHER RESOLVED that a copy of said Reservation Plat be attached to and accompany each copy of this Resolution which is transmitted to the various State and County officials hereinbefore enumerated; and

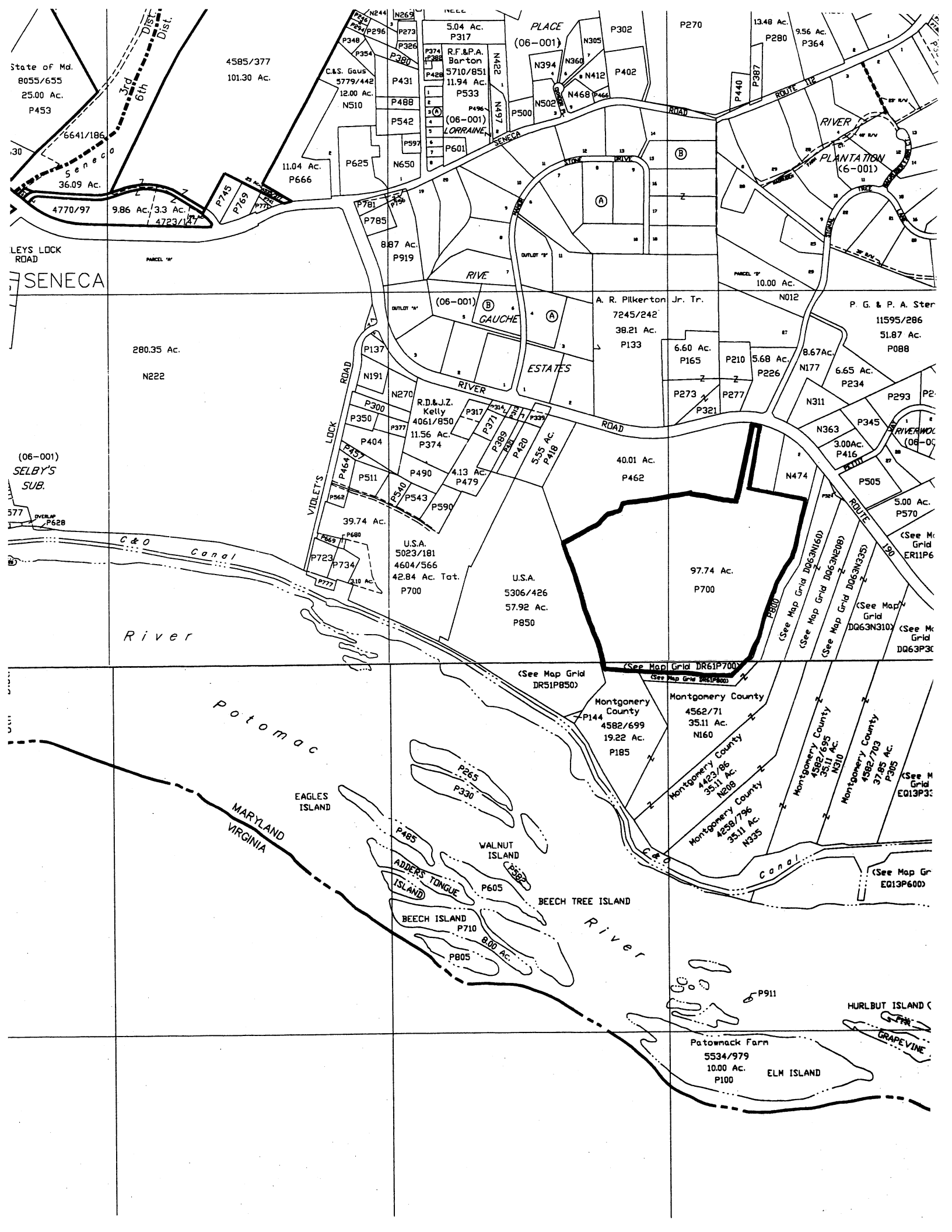
BE IT FURTHER RESOLVED that a notice of this Resolution be published in two newspapers of general circulation in the Maryland-Washington Regional District in Montgomery County as required by the above-mentioned Regulations for the Subdivision of Land.

---

This is to certify that the foregoing is a true and correct copy of a Resolution adopted by the Montgomery County Planning Board of the Maryland-National Capital Park and Planning Commission, on motion of Commissioner \_\_\_\_\_, seconded by Commissioner \_\_\_\_\_, with Commissioners \_\_\_\_\_, \_\_\_\_\_, \_\_\_\_\_, and \_\_\_\_\_ voting in favor of the motion, at its regular meeting held on \_\_\_\_\_ in Silver Spring, Maryland.

---

Trudye Morgan Johnson, Executive Director



State of Md.  
8055/655  
25.00 Ac.  
P453

4585/377  
101.30 Ac.

LEYS LOCK  
ROAD  
SENECA

280.35 Ac.  
N222

(06-001)  
SELBY'S  
SUB.  
577  
OVERLAP  
P628

C&O Canal

River

Potomac

MARYLAND  
VIRGINIA

EAGLES ISLAND

P665  
P330

P485  
ADDERS TONGUE ISLAND

BEECH ISLAND  
P710

P805  
8.00 Ac.

WALNUT ISLAND

BEECH TREE ISLAND

Potomack Farm  
5534/979  
10.00 Ac.  
P100  
ELM ISLAND

HURLBUT ISLAND  
GRAPEVINE

N244  
P273  
5.04 Ac.  
P317  
PLACE (06-001)  
N305  
P302  
P270  
13.48 Ac.  
P290  
9.56 Ac.  
P364  
N394  
N360  
N412  
P402  
N502  
N468  
P466  
P440  
P387  
ROUTE 112  
RIVER  
PLANTATION (6-001)  
N269  
P326  
R.F. & P.A. Barton  
5710/851  
11.94 Ac.  
P533  
P496  
(06-001)  
LORRAINE  
P601  
P500  
P431  
P488  
P542  
P597  
P625  
N650  
11.04 Ac.  
P666  
P745  
P769  
P770  
4770/97  
9.86 Ac., 3.3 Ac.  
4723/127  
887 Ac.  
P919  
RIVE  
(06-001) B  
GAUCHE  
A  
A. R. Pilkerton Jr. Tr.  
7245/242  
38.21 Ac.  
P133  
6.60 Ac.  
P165  
P210  
5.68 Ac.  
P226  
8.67 Ac.  
N177  
6.65 Ac.  
P234  
P273  
P277  
P321  
N311  
P293  
P2  
P. G. & P. A. Ster  
11595/286  
51.87 Ac.  
P088  
RIVER  
N191  
N270  
R.D. & J.Z. Kelly  
4061/850  
11.56 Ac.  
P374  
P317  
P314  
P315  
P316  
P317  
P318  
P319  
P320  
P321  
P322  
P323  
P324  
P325  
P326  
P327  
P328  
P329  
P330  
P331  
P332  
P333  
P334  
P335  
P336  
P337  
P338  
P339  
P340  
P341  
P342  
P343  
P344  
P345  
P346  
P347  
P348  
P349  
P350  
P351  
P352  
P353  
P354  
P355  
P356  
P357  
P358  
P359  
P360  
P361  
P362  
P363  
P364  
P365  
P366  
P367  
P368  
P369  
P370  
P371  
P372  
P373  
P374  
P375  
P376  
P377  
P378  
P379  
P380  
P381  
P382  
P383  
P384  
P385  
P386  
P387  
P388  
P389  
P390  
P391  
P392  
P393  
P394  
P395  
P396  
P397  
P398  
P399  
P400  
P401  
P402  
P403  
P404  
P405  
P406  
P407  
P408  
P409  
P410  
P411  
P412  
P413  
P414  
P415  
P416  
P417  
P418  
P419  
P420  
P421  
P422  
P423  
P424  
P425  
P426  
P427  
P428  
P429  
P430  
P431  
P432  
P433  
P434  
P435  
P436  
P437  
P438  
P439  
P440  
P441  
P442  
P443  
P444  
P445  
P446  
P447  
P448  
P449  
P450  
P451  
P452  
P453  
P454  
P455  
P456  
P457  
P458  
P459  
P460  
P461  
P462  
P463  
P464  
P465  
P466  
P467  
P468  
P469  
P470  
P471  
P472  
P473  
P474  
P475  
P476  
P477  
P478  
P479  
P480  
P481  
P482  
P483  
P484  
P485  
P486  
P487  
P488  
P489  
P490  
P491  
P492  
P493  
P494  
P495  
P496  
P497  
P498  
P499  
P500  
P501  
P502  
P503  
P504  
P505  
P506  
P507  
P508  
P509  
P510  
P511  
P512  
P513  
P514  
P515  
P516  
P517  
P518  
P519  
P520  
P521  
P522  
P523  
P524  
P525  
P526  
P527  
P528  
P529  
P530  
P531  
P532  
P533  
P534  
P535  
P536  
P537  
P538  
P539  
P540  
P541  
P542  
P543  
P544  
P545  
P546  
P547  
P548  
P549  
P550  
P551  
P552  
P553  
P554  
P555  
P556  
P557  
P558  
P559  
P560  
P561  
P562  
P563  
P564  
P565  
P566  
P567  
P568  
P569  
P570  
P571  
P572  
P573  
P574  
P575  
P576  
P577  
P578  
P579  
P580  
P581  
P582  
P583  
P584  
P585  
P586  
P587  
P588  
P589  
P590  
P591  
P592  
P593  
P594  
P595  
P596  
P597  
P598  
P599  
P600  
P601  
P602  
P603  
P604  
P605  
P606  
P607  
P608  
P609  
P610  
P611  
P612  
P613  
P614  
P615  
P616  
P617  
P618  
P619  
P620  
P621  
P622  
P623  
P624  
P625  
P626  
P627  
P628  
P629  
P630  
P631  
P632  
P633  
P634  
P635  
P636  
P637  
P638  
P639  
P640  
P641  
P642  
P643  
P644  
P645  
P646  
P647  
P648  
P649  
P650  
P651  
P652  
P653  
P654  
P655  
P656  
P657  
P658  
P659  
P660  
P661  
P662  
P663  
P664  
P665  
P666  
P667  
P668  
P669  
P670  
P671  
P672  
P673  
P674  
P675  
P676  
P677  
P678  
P679  
P680  
P681  
P682  
P683  
P684  
P685  
P686  
P687  
P688  
P689  
P690  
P691  
P692  
P693  
P694  
P695  
P696  
P697  
P698  
P699  
P700  
P701  
P702  
P703  
P704  
P705  
P706  
P707  
P708  
P709  
P710  
P711  
P712  
P713  
P714  
P715  
P716  
P717  
P718  
P719  
P720  
P721  
P722  
P723  
P724  
P725  
P726  
P727  
P728  
P729  
P730  
P731  
P732  
P733  
P734  
P735  
P736  
P737  
P738  
P739  
P740  
P741  
P742  
P743  
P744  
P745  
P746  
P747  
P748  
P749  
P750  
P751  
P752  
P753  
P754  
P755  
P756  
P757  
P758  
P759  
P760  
P761  
P762  
P763  
P764  
P765  
P766  
P767  
P768  
P769  
P770  
P771  
P772  
P773  
P774  
P775  
P776  
P777  
P778  
P779  
P780  
P781  
P782  
P783  
P784  
P785  
P786  
P787  
P788  
P789  
P790  
P791  
P792  
P793  
P794  
P795  
P796  
P797  
P798  
P799  
P800  
P801  
P802  
P803  
P804  
P805  
P806  
P807  
P808  
P809  
P810  
P811  
P812  
P813  
P814  
P815  
P816  
P817  
P818  
P819  
P820  
P821  
P822  
P823  
P824  
P825  
P826  
P827  
P828  
P829  
P830  
P831  
P832  
P833  
P834  
P835  
P836  
P837  
P838  
P839  
P840  
P841  
P842  
P843  
P844  
P845  
P846  
P847  
P848  
P849  
P850  
P851  
P852  
P853  
P854  
P855  
P856  
P857  
P858  
P859  
P860  
P861  
P862  
P863  
P864  
P865  
P866  
P867  
P868  
P869  
P870  
P871  
P872  
P873  
P874  
P875  
P876  
P877  
P878  
P879  
P880  
P881  
P882  
P883  
P884  
P885  
P886  
P887  
P888  
P889  
P890  
P891  
P892  
P893  
P894  
P895  
P896  
P897  
P898  
P899  
P900  
P901  
P902  
P903  
P904  
P905  
P906  
P907  
P908  
P909  
P910  
P911  
P912  
P913  
P914  
P915  
P916  
P917  
P918  
P919  
P920  
P921  
P922  
P923  
P924  
P925  
P926  
P927  
P928  
P929  
P930  
P931  
P932  
P933  
P934  
P935  
P936  
P937  
P938  
P939  
P940  
P941  
P942  
P943  
P944  
P945  
P946  
P947  
P948  
P949  
P950  
P951  
P952  
P953  
P954  
P955  
P956  
P957  
P958  
P959  
P960  
P961  
P962  
P963  
P964  
P965  
P966  
P967  
P968  
P969  
P970  
P971  
P972  
P973  
P974  
P975  
P976  
P977  
P978  
P979  
P980  
P981  
P982  
P983  
P984  
P985  
P986  
P987  
P988  
P989  
P990  
P991  
P992  
P993  
P994  
P995  
P996  
P997  
P998  
P999  
P1000

(See Map Grid DR51P850)

(See Map Grid DR61P700)

(See Map Grid DG63N160)  
(See Map Grid DG63N200)  
(See Map Grid DG63N335)  
(See Map Grid DG63N310)  
(See Map Grid ER11P6)  
(See Map Grid ER13P3)  
(See Map Grid EQ13P600)

Montgomery County  
4562/71  
35.11 Ac.  
N160  
Montgomery County  
4422/86  
35.11 Ac.  
N208  
Montgomery County  
4258/796  
35.11 Ac.  
N335  
Montgomery County  
4582/695  
35.11 Ac.  
N310  
Montgomery County  
4582/703  
37.85 Ac.  
P305  
(See Map Grid EQ13P3)