

Item #9



THE MARYLAND-NATIONAL CAPITAL PARK AND PLANNING COMMISSION

M E M O R A N D U M

DATE: March 07, 2003
TO: Montgomery County Planning Board
FROM: A. Malcolm Shaneman
Development Review Division
(301) 495-4587
SUBJECT: Informational Maps for Subdivision Items on the
Planning Board's Agenda for March 13, 2003.

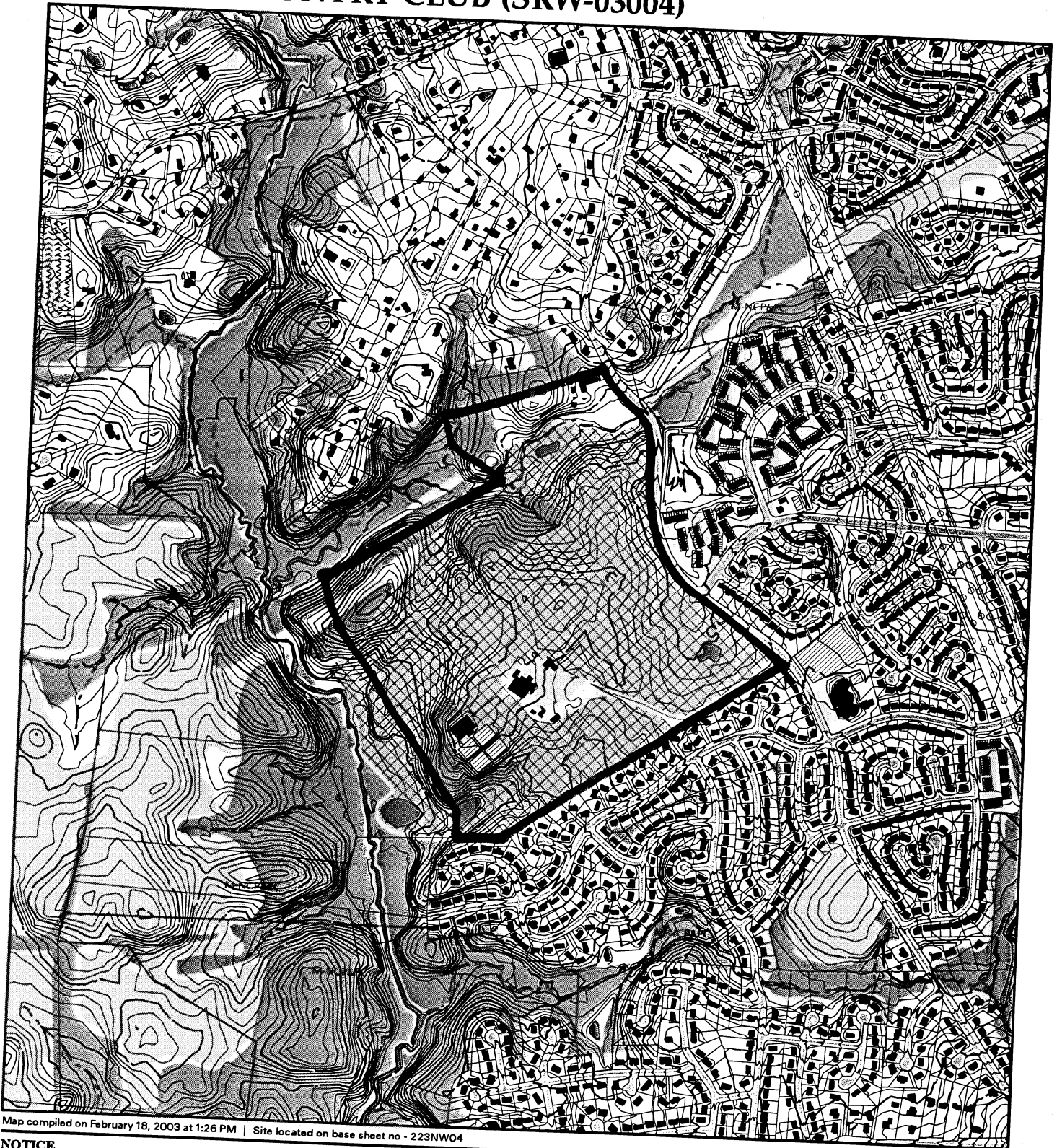
Attached are copies of plan drawings for Items #07, #08, #09 and #10. These subdivision items are scheduled for Planning Board consideration on March 13, 2003. The items are further identified as follows:

- Agenda Item #07 - Preliminary Plan 1-03051
Bannockburn Heights
- Agenda Item #08 - Pre-Preliminary Plan 7-03020
Summer Hill
- Agenda Item #09 - Subdivision Regulation Waiver SRW-03004
Norbeck Country Club
- Agenda Item #10 - Preliminary Plan 1-03009
Burgundy Park

Attachment

VICINITY MAP FOR

NORBECK COUNTRY CLUB (SRW-03004)



Map compiled on February 18, 2003 at 1:26 PM | Site located on base sheet no - 223NW04

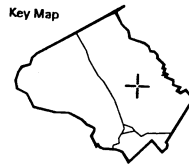
NOTICE

The planimetric, property, and topographic information shown on this map is based on copyrighted Map Products from the Montgomery County Department of Park and Planning of the Maryland -National Capital Park and Planning Commission, and may not be copied or reproduced without written permission from M-NCPPC.

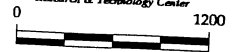
Property lines are compiled by adjusting the property lines to topography created from aerial photography and should not be interpreted as actual field surveys. Planimetric features were compiled from 1:14400 scale aerial photography using stereo photogrammetric methods.

This map is created from a variety of data sources, and may not reflect the most current conditions in any one location and may not be completely accurate or up to date. All map features are approximately within five feet of their true location. This map may not be the same as a map of the same area plotted at an earlier time as the data is continuously updated. Use of this map, other than for the general planning purposes is not recommended. - Copyright 1998

Key Map



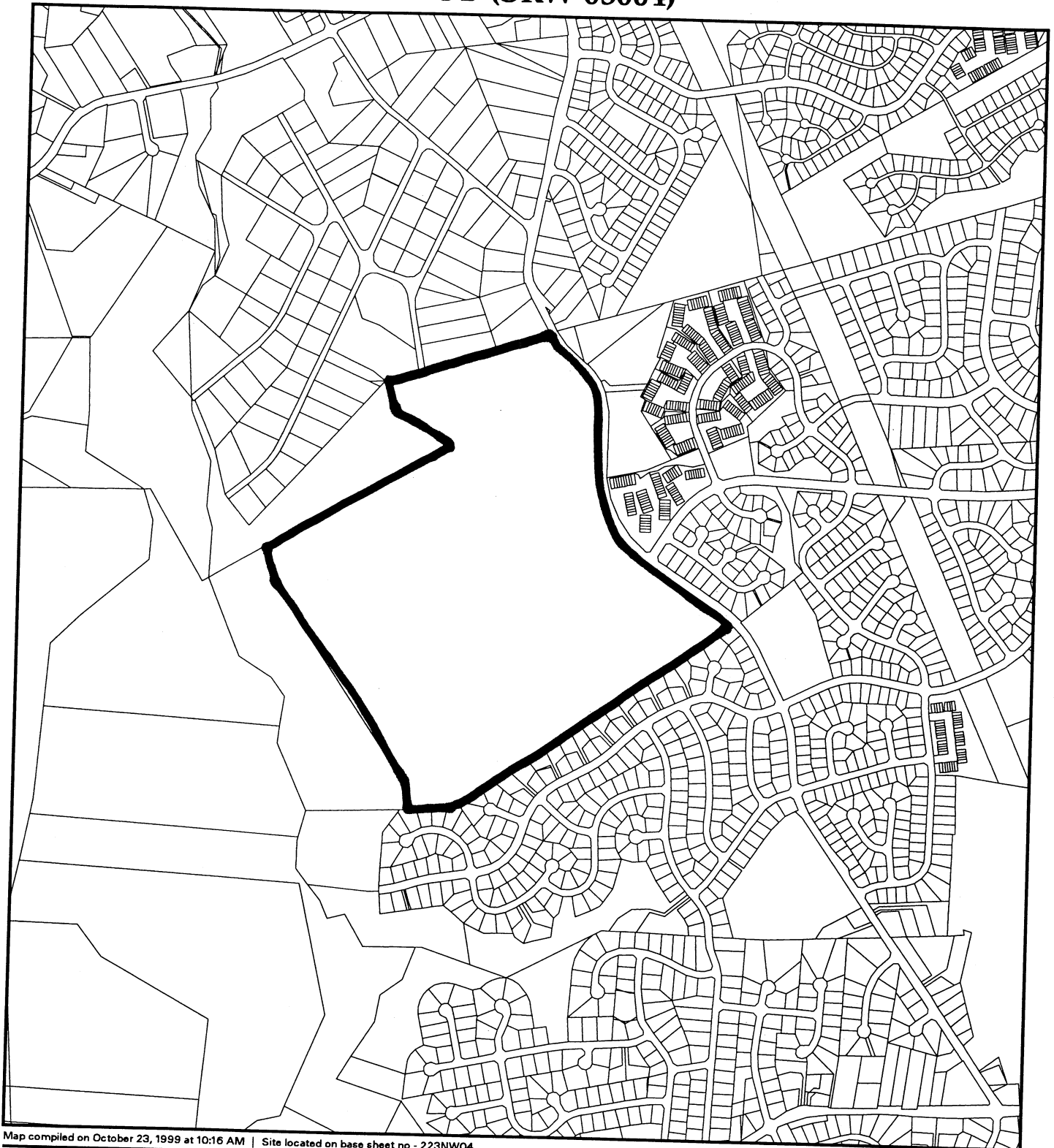
Research & Technology Center



1 : 14400

MONTGOMERY COUNTY DEPARTMENT OF PARK AND PLANNING
THE MARYLAND-NATIONAL CAPITAL PARK AND PLANNING COMMISSION
8787 Georgia Avenue - Silver Spring, Maryland 20910-3760

VICINITY MAP FOR
NORBECK COUNTRY CLUB (SRW-03004)



Map compiled on October 23, 1999 at 10:16 AM | Site located on base sheet no - 223NW04

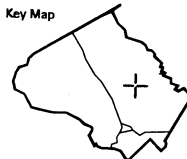
NOTICE

The planimetric, property, and topographic information shown on this map is based on copyrighted Map Products from the Montgomery County Department of Park and Planning of the Maryland -National Capital Park and Planning Commission, and may not be copied or reproduced without written permission from M-NCPPC.

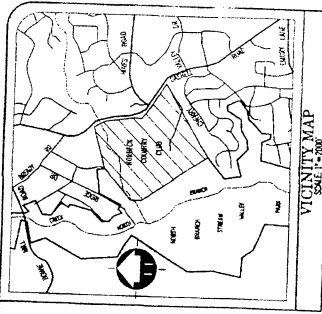
Property lines are compiled by adjusting the property lines to topography created from aerial photography and should not be interpreted as actual field surveys. Planimetric features were compiled from 1:14400 scale aerial photography using stereo photogrammetric methods.

This map is created from a variety of data sources, and may not reflect the most current conditions in any one location and may not be completely accurate or up to date. All map features are approximately within five feet of their true location. This map may not be the same as a map of the same area plotted at an earlier time as the data is continuously updated. Use of this map, other than for general planning purposes is not recommended. - Copyright 1998

Key Map



1 : 14400



SITE DATA

FORMING: RE-1
 18 HOLE GOLF COURSE
 156.68 ACRES
 SUBJECT TO SPECIAL EXCEPTION CR-274

GENERAL NOTES

1. BOUNDARY AND DIMENSIONS SHOWN ARE BASED UPON RECORDS.
 2. RECORDS FOR THIS PROJECT ARE FILED IN THE OFFICE OF THE CLERK OF COURTS, MONTGOMERY COUNTY, MARYLAND.

SS
 SITE SOLUTIONS, INC.
 10000 GOLF COURSE DRIVE
 SUITE 100
 ROCKVILLE, MARYLAND 20850
 (301) 847-8800 FAX (301) 847-3784
 PROVIDING PROFESSIONAL SURVEYING SERVICES

OWNER:
 NORBECK COUNTRY CLUB
 17200 CASSELL ROAD
 ROCKVILLE, MARYLAND 20853

PROPERTY LOCATION MAP
 NORBECK COUNTRY CLUB
 PARCELS PAID IN FULL P. 24
 MONTGOMERY COUNTY, MARYLAND

DATE	11.27.2003
BY	1/1/1
SCALE	1" = 2000'
PROJECT	
NO.	