

Item # 11



THE MARYLAND-NATIONAL CAPITAL PARK AND PLANNING COMMISSION
Office of the Chairman, Montgomery County Planning Board

M E M O R A N D U M

DATE: May 30, 2003
TO: Montgomery County Planning Board
FROM: A. Malcolm Shaneman
Development Review Division
(301) 495-4587
SUBJECT: Informational Maps for Subdivision Items on the
Planning Board's Agenda for June 05, 2003.

Attached are copies of plan drawings for Item #11, #12, and #13. These subdivision items are scheduled for Planning Board consideration on June 05, 2003. The items are further identified as follows:

Agenda Item #11 - Preliminary Plan 1-03035
Randolph Manor

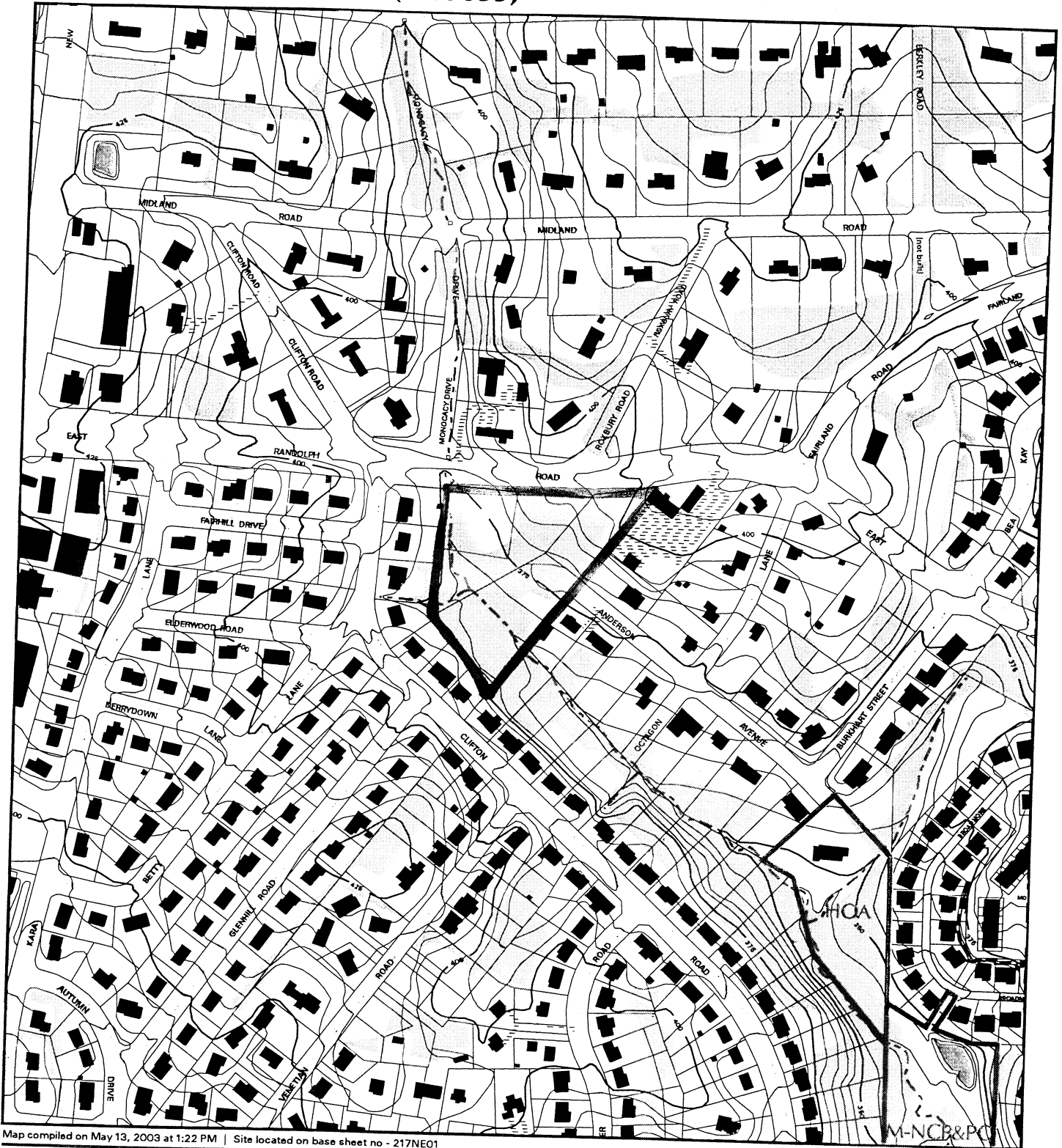
Agenda Item #12 - Preliminary Plan 1-03057
Cider Barrel Property

Agenda Item #13 - Preliminary Plan 1-03034
Bethesda Church Road

Attachment

VICINITY MAP FOR

RANDOLPH MANOR (1-03035)



Map compiled on May 13, 2003 at 1:22 PM | Site located on base sheet no - 217NE01

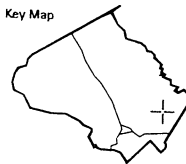
NOTICE

The planimetric, property, and topographic information shown on this map is based on copyrighted Map Products from the Montgomery County Department of Park and Planning of the Maryland-National Capital Park and Planning Commission, and may not be copied or reproduced without written permission from M-NCPPC.

Property lines are compiled by adjusting the property lines to topography created from aerial photography and should not be interpreted as actual field surveys. Planimetric features were compiled from 1:14400 scale aerial photography using stereo photogrammetric methods.

This map is created from a variety of data sources, and may not reflect the most current conditions in any one location and may not be completely accurate or up to date. All map features are approximately within five feet of their true location. This map may not be the same as a map of the same area plotted at an earlier time as the data is continuously updated. Use of this map, other than for general planning purposes is not recommended. - Copyright 1998

Key Map

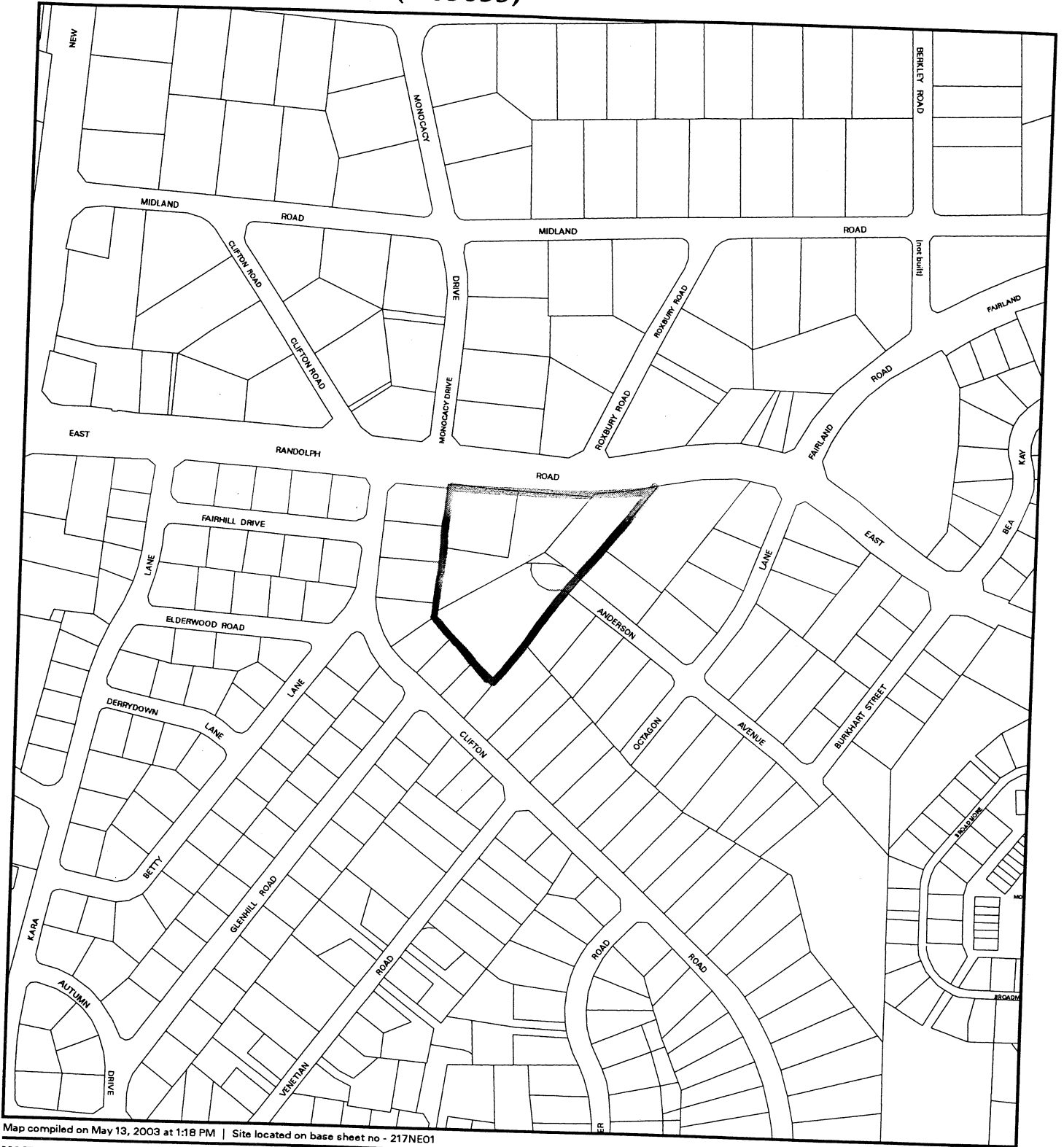


Research & Technology Center
0 200 400

1 : 4800

VICINITY MAP FOR

RANDOLPH MANOR (1-03035)



Map compiled on May 13, 2003 at 1:18 PM | Site located on base sheet no - 217NE01

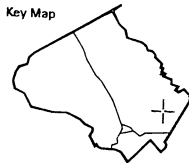
NOTICE

The planimetric, property, and topographic information shown on this map is based on copyrighted Map Products from the Montgomery County Department of Park and Planning of the Maryland -National Capital Park and Planning Commission, and may not be copied or reproduced without written permission from M-NCPPC.

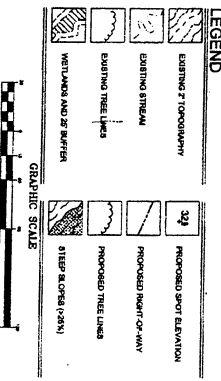
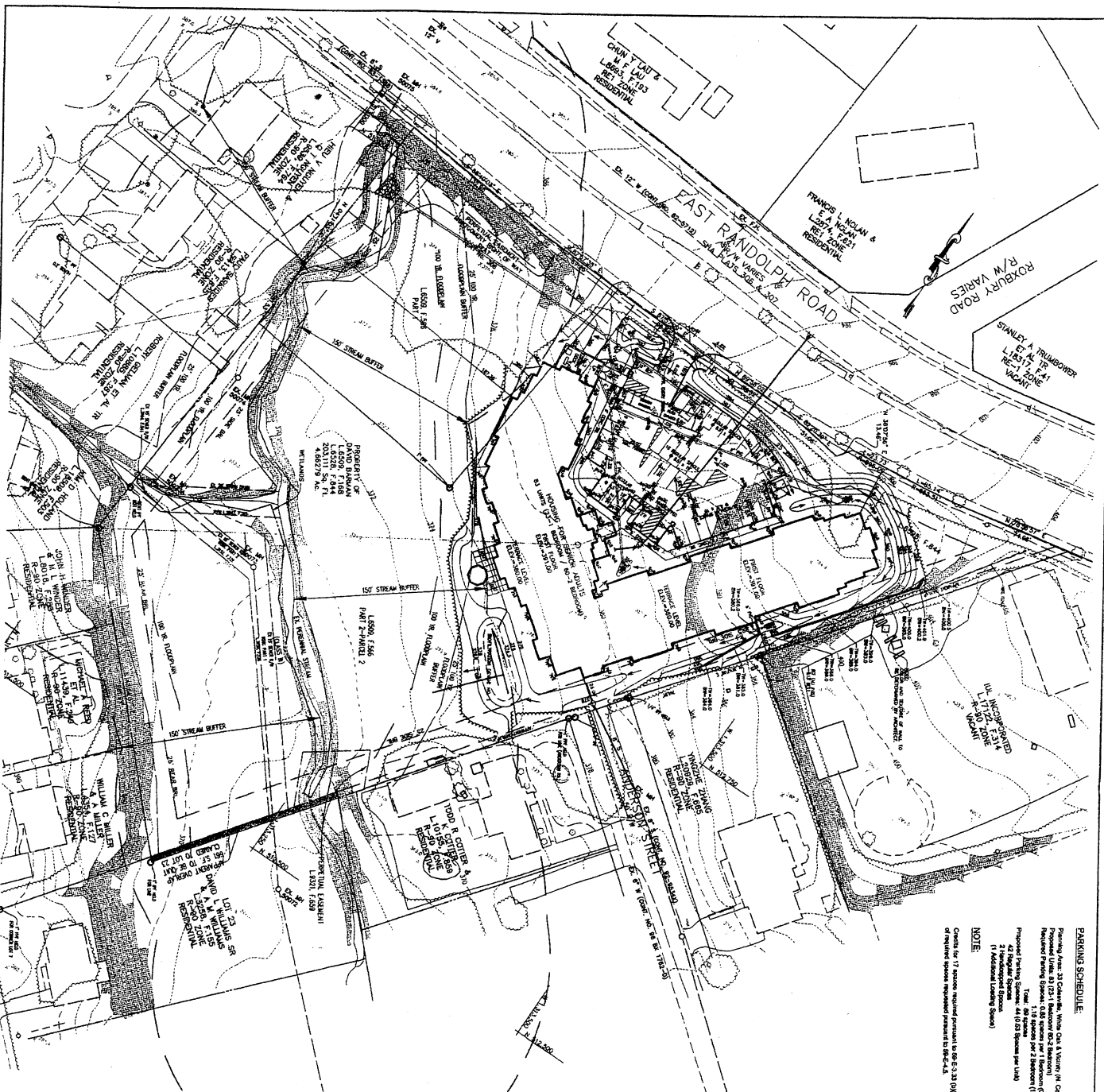
Property lines are compiled by adjusting the property lines to topography created from aerial photography and should not be interpreted as actual field surveys. Planimetric features were compiled from 1:14400 scale aerial photography using stereo photogrammetric methods.

This map is created from a variety of data sources, and may not reflect the most current conditions in any one location and may not be completely accurate or up to date. All map features are approximately within five feet of their true location. This map may not be the same as a map of the same area plotted at an earlier time as the data is continuously updated. Use of this map, other than for general planning purposes is not recommended. - Copyright 1998

Key Map



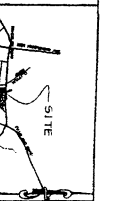
1 : 4800



PARKING SCHEDULE:
 Proposed Area: 23 Coleman, White Oak & Victory (N. Central Ave.)
 Proposed (Lots 6, 10, 21) (Maximum 602 Bicycles) - 0.86 - 23(20)
 Proposed (Lots 1, 2, 3, 4, 5, 7, 8, 9, 11, 12, 13, 14, 15, 16, 17, 18, 19, 20, 22, 24, 25, 26, 27, 28, 29, 30, 31, 32, 33, 34, 35, 36, 37, 38, 39, 40, 41, 42, 43, 44, 45, 46, 47, 48, 49, 50, 51, 52, 53, 54, 55, 56, 57, 58, 59, 60, 61, 62, 63, 64, 65, 66, 67, 68, 69, 70, 71, 72, 73, 74, 75, 76, 77, 78, 79, 80, 81, 82, 83, 84, 85, 86, 87, 88, 89, 90, 91, 92, 93, 94, 95, 96, 97, 98, 99, 100) (Maximum 112 Bicycles) - 1.18 - 28(20)
 Proposed (Lots 101, 102, 103, 104, 105, 106, 107, 108, 109, 110, 111, 112, 113, 114, 115, 116, 117, 118, 119, 120, 121, 122, 123, 124, 125, 126, 127, 128, 129, 130, 131, 132, 133, 134, 135, 136, 137, 138, 139, 140, 141, 142, 143, 144, 145, 146, 147, 148, 149, 150) (Maximum 112 Bicycles) - 1.18 - 28(20)

GENERAL NOTES:

1. 2' stripset prepared by Anderson Storm, Inc.
2. Boundary survey prepared by James H. Rust & Associates, Inc.
3. Existing Zoning: R-50
4. Total Site Area: 2,033,111 S.F. or 46.46 AC.
5. Planning Area: 203 Coleman, White Oak, and Victory
6. Surveyor: James H. Rust & Associates
7. Tax Map No. R-501, pg 11, 146
8. W.A.S.C. Map: 21710201
9. A/C/E: James H. Rust & Associates
10. Proposed (Lot: 101) (Maximum 602 Bicycles)
11. Proposed (Lots: 6, 10, 21) (Maximum 602 Bicycles)
12. Existing Front Corner: 161, 150 S.E. or 428 AC.
13. There are no proposed historic structures on this site.
14. There are no cemeteries located on or adjacent to the site.
15. Existing water category 1, existing sewer category 1, proposed public water and sewer.
16. Owner/Developer: J.K. Kirby Development, LLC
17. Professional Engineer: James H. Rust & Associates, Inc.
 2012 Green Park Drive, Suite 200
 17416 West 2600, Frederick, MD 21704
 PHONE: (410) 480-4144
 FAX: (410) 480-4145
18. Surveyor: James H. Rust & Associates, Inc.
19. Submitter: James H. Rust & Associates, Inc.
20. All markers remain to conform to Montgomery County DOT Standard No. MD-11203.
21. All corners and lot lines are in accordance with Montgomery County laws and regulations.
22. All markers are to be placed in concrete.
23. All markers are to be placed in concrete.
24. All markers are to be placed in concrete.
25. All markers are to be placed in concrete.
26. All markers are to be placed in concrete.
27. All markers are to be placed in concrete.
28. All markers are to be placed in concrete.
29. All markers are to be placed in concrete.
30. All markers are to be placed in concrete.
31. All markers are to be placed in concrete.
32. All markers are to be placed in concrete.
33. All markers are to be placed in concrete.
34. All markers are to be placed in concrete.
35. All markers are to be placed in concrete.
36. All markers are to be placed in concrete.
37. All markers are to be placed in concrete.
38. All markers are to be placed in concrete.
39. All markers are to be placed in concrete.
40. All markers are to be placed in concrete.
41. All markers are to be placed in concrete.
42. All markers are to be placed in concrete.
43. All markers are to be placed in concrete.
44. All markers are to be placed in concrete.
45. All markers are to be placed in concrete.
46. All markers are to be placed in concrete.
47. All markers are to be placed in concrete.
48. All markers are to be placed in concrete.
49. All markers are to be placed in concrete.
50. All markers are to be placed in concrete.



OWNER / DEVELOPER:
J. KIRBY DEVELOPMENT, LLC
 ATTN: JEFF KIRBY
 2205 WARWICK WAY, SUITE 210
 HARRISVILLE, MARYLAND 21104
 PHONE (410) 480-4144
 FAX (410) 480-4145

Patton Harris Rust & Associates, pc
 Engineers, Surveyors, Planners, Landscape Architects
 12850 Middlebrook Road Suite 200 Germantown, MD 20876
 T 301-528-4300 F 301-528-0419

No.	REVISION	DATE	BY

SITE PLAN
RANDOLPH MANOR
 A J. KIRBY DEVELOPMENT PROJECT
 COLESVILLE ELECTION DISTRICT (5TH)
 MONTGOMERY COUNTY, MARYLAND

Pj+R+
 Patton Harris Rust & Associates, pc
 ENGINEERS, SURVEYORS, PLANNERS, LANDSCAPE ARCHITECTS
 12850 Middlebrook Road Suite 200 Germantown, MD 20876
 T 301-528-4300 F 301-528-0419