

Item # 6

M-NCPPC



MONTGOMERY COUNTY DEPARTMENT OF PARK AND PLANNING

THE MARYLAND-NATIONAL CAPITAL
PARK AND PLANNING COMMISSION

8787 Georgia Avenue
Silver Spring, Maryland 20910-3760
301-495-4500, www.mncppc.org

MEMORANDUM

DATE: April 9, 2004
TO: Montgomery County Planning Board
FROM: A. Malcolm Shaneman
Development Review Division
(301) 495-4587
SUBJECT: Informational Maps for Subdivision Items on the
Planning Board's Agenda for April 09, 2004.

Attached are copies of plan drawings for Items #04, #05, #06, and #07. These subdivision items are scheduled for Planning Board consideration on April 09, 2004. The items are further identified as follows:

Agenda Item #04 -Preliminary Plan 1-03092
Sandy Spring Friends School

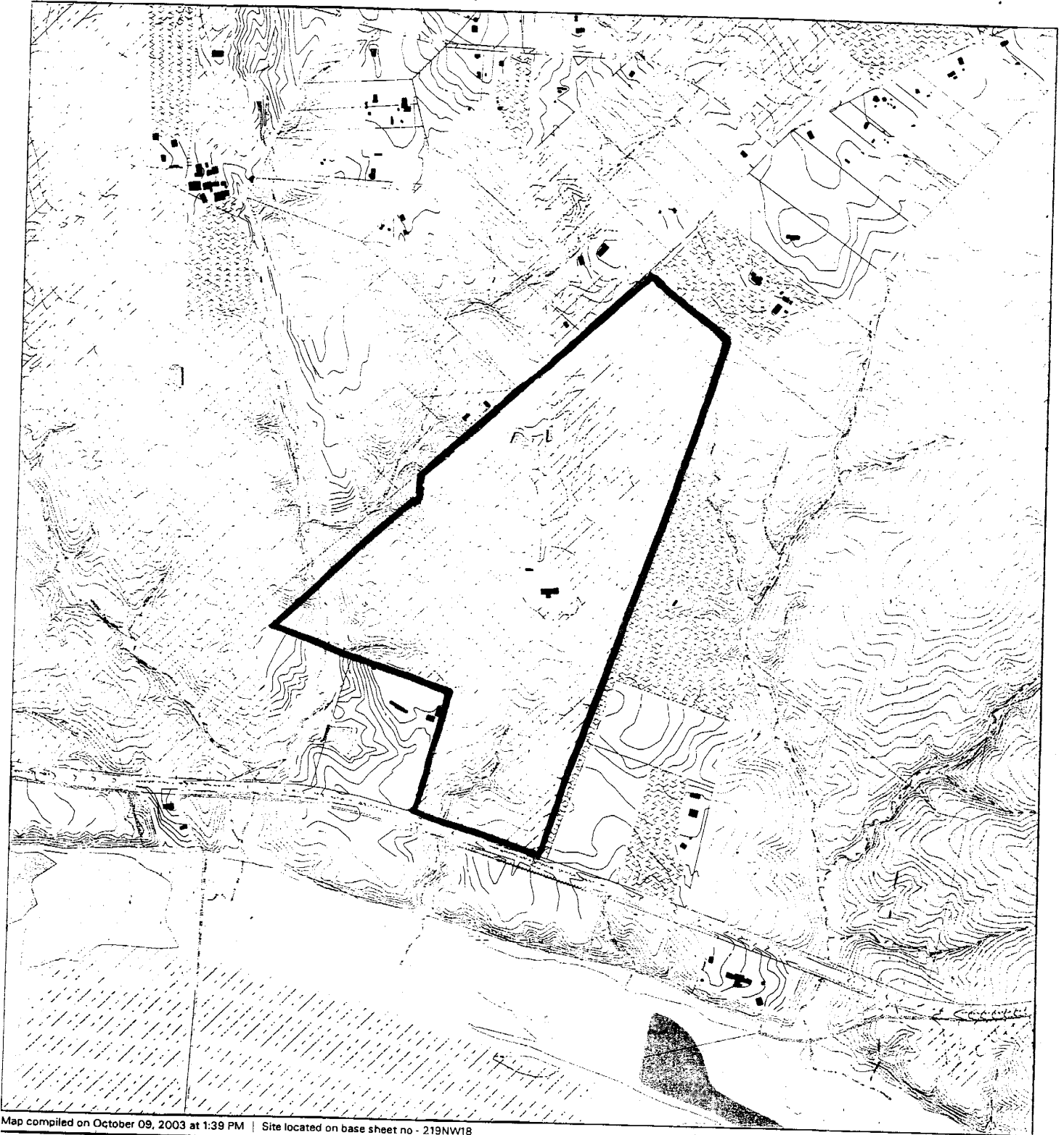
Agenda Item #05 -Preliminary Plan 1-03103
Jamison Property

Agenda Item #06 -Preliminary Plan 1-04026
Kinzie Property

Agenda Item #07 -Preliminary Plan 1-04021
Giancola Quarry

Attachment

KINZIE PROPERTY (1-04026)



Map compiled on October 09, 2003 at 1:39 PM | Site located on base sheet no - 219NW18

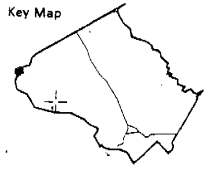
NOTICE

The planimetric, property, and topographic information shown on this map is based on copyrighted Map Products from the Montgomery County Department of Park and Planning of the Maryland-National Capital Park and Planning Commission, and may not be copied or reproduced without written permission from M-NCPPC.

Property lines are compiled by adjusting the property lines to topography created from aerial photography and should not be interpreted as actual field surveys. Planimetric features were compiled from 1:14400 scale aerial photography using stereo photogrammetric methods.

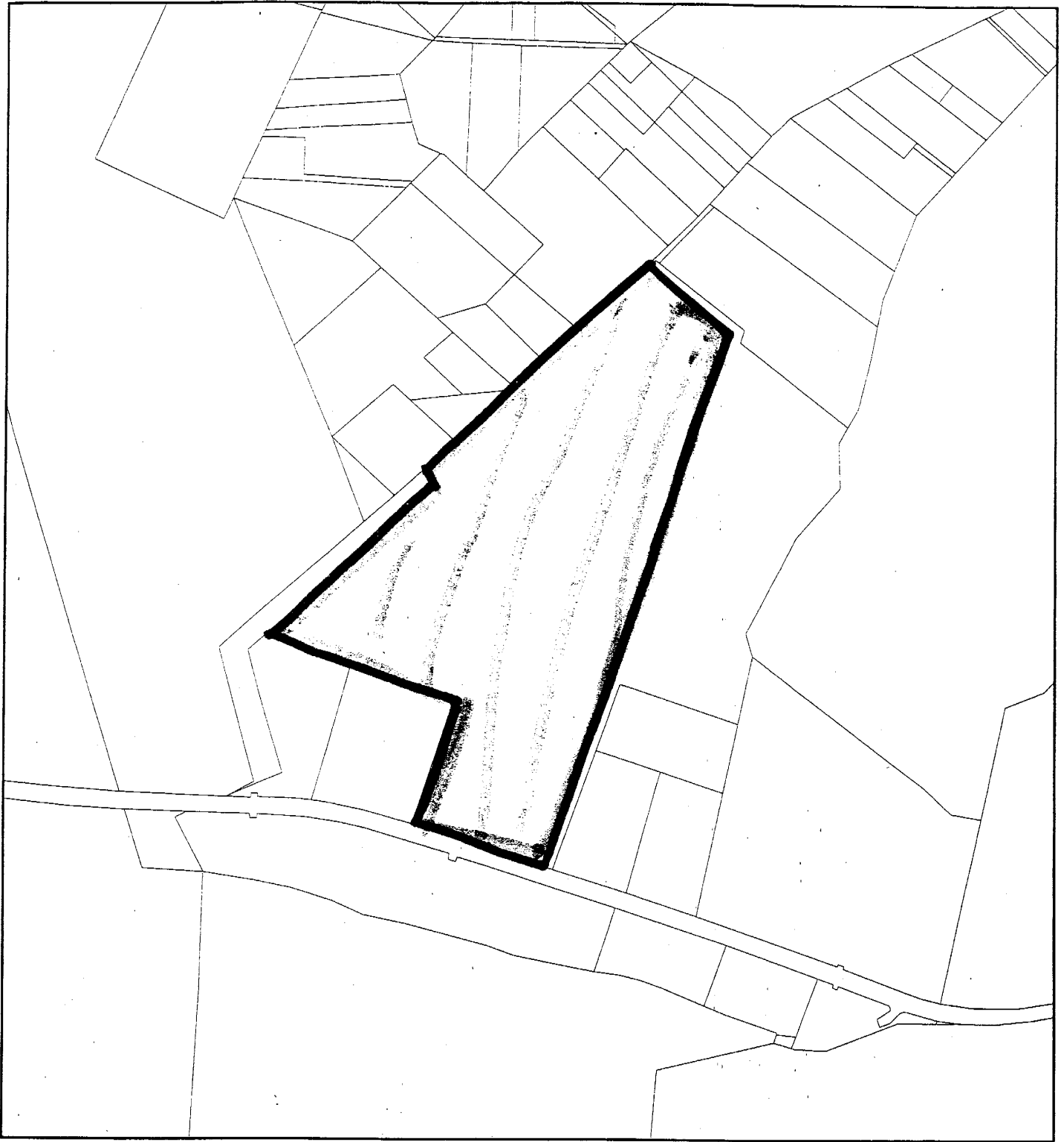
This map is created from a variety of data sources, and may not reflect the most current conditions in any one location and may not be completely accurate or up to date. All map features are approximately within five feet of their true location. This map may not be the same as a map of the same area plotted at an earlier time as the data is continuously updated. Use of this map, other than for general planning purposes is not recommended. - Copyright 1998

Key Map



1 : 12000

KINZIE PROPERTY (1-04026)



Map compiled on October 09, 2003 at 1:43 PM | Site located on base sheet no - 219NW18

NOTICE

The planimetric, property, and topographic information shown on this map is based on copyrighted Map Products from the Montgomery County Department of Park and Planning of the Maryland-National Capital Park and Planning Commission, and may not be copied or reproduced without written permission from M-NCPPC.

Property lines are compiled by adjusting the property lines to topography created from aerial photography and should not be interpreted as actual field surveys. Planimetric features were compiled from 1:14400 scale aerial photography using stereo photogrammetric methods.

This map is created from a variety of data sources, and may not reflect the most current conditions in any one location and may not be completely accurate or up to date. All map features are approximately within five feet of their true location. This map may not be the same as a map of the same area plotted at an earlier time as the data is continuously updated. Use of this map, other than for general planning purposes is not recommended. - Copyright 1998

Key Map

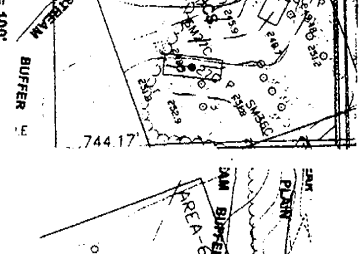
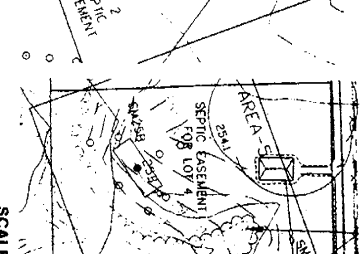
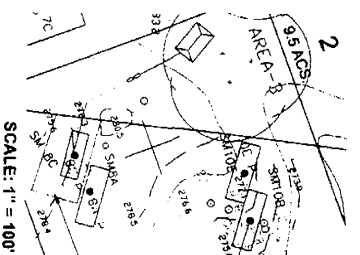
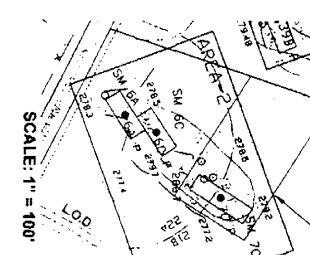
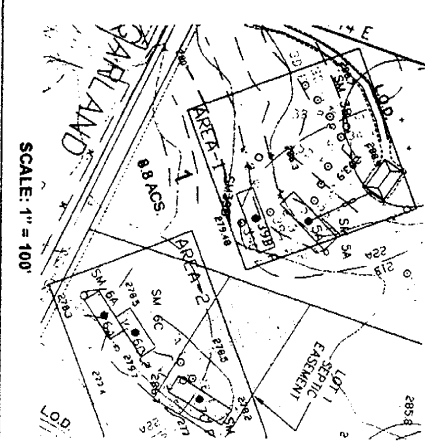


Research & Technology Center



1 : 12000

MONTGOMERY COUNTY DEPARTMENT OF PARK AND PLANNING
THE MARYLAND-NATIONAL CAPITAL PARK AND PLANNING COMMISSION
8787 Georgia Avenue - Silver Spring, Maryland 20910-3760



101.1
 101.2
 101.3
 101.4
 101.5
 101.6
 101.7
 101.8
 101.9
 101.10
 101.11
 101.12
 101.13
 101.14
 101.15
 101.16
 101.17
 101.18
 101.19
 101.20
 101.21
 101.22
 101.23
 101.24
 101.25
 101.26
 101.27
 101.28
 101.29
 101.30
 101.31
 101.32
 101.33
 101.34
 101.35
 101.36
 101.37
 101.38
 101.39
 101.40
 101.41
 101.42
 101.43
 101.44
 101.45
 101.46
 101.47
 101.48
 101.49
 101.50

101.1
 101.2
 101.3
 101.4
 101.5
 101.6
 101.7
 101.8
 101.9
 101.10
 101.11
 101.12
 101.13
 101.14
 101.15
 101.16
 101.17
 101.18
 101.19
 101.20
 101.21
 101.22
 101.23
 101.24
 101.25
 101.26
 101.27
 101.28
 101.29
 101.30
 101.31
 101.32
 101.33
 101.34
 101.35
 101.36
 101.37
 101.38
 101.39
 101.40
 101.41
 101.42
 101.43
 101.44
 101.45
 101.46
 101.47
 101.48
 101.49
 101.50

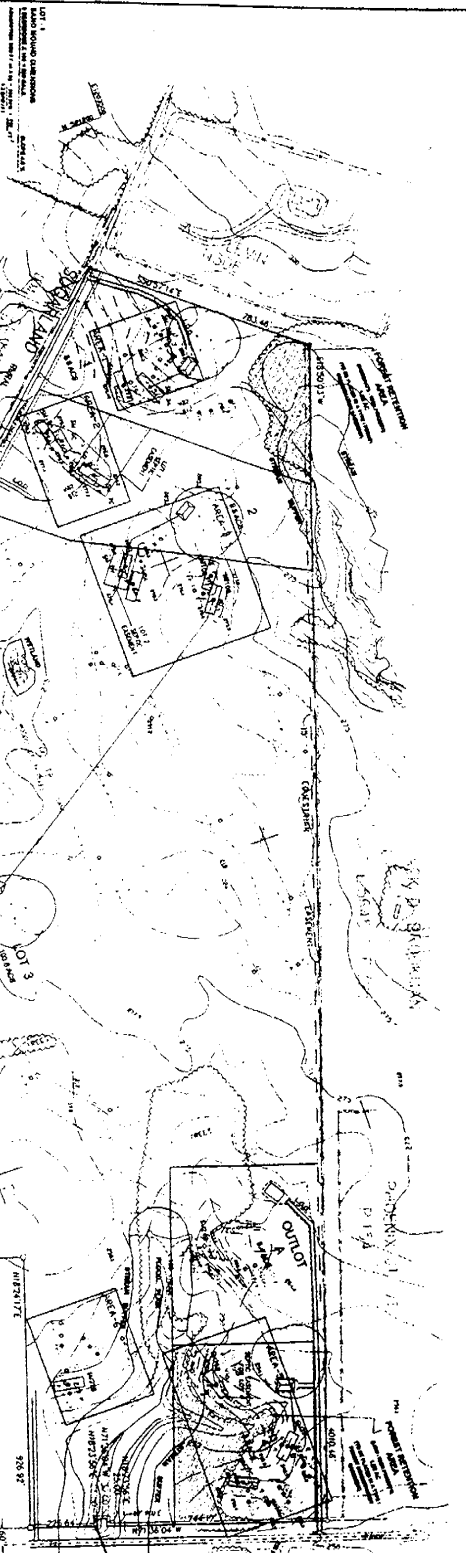
DEPTH (FEET)	SOIL TYPE	PERCENT SAND	PERCENT SILT	PERCENT CLAY
0.0 - 1.0	CLAY	15	25	60
1.0 - 2.0	CLAY	15	25	60
2.0 - 3.0	CLAY	15	25	60
3.0 - 4.0	CLAY	15	25	60
4.0 - 5.0	CLAY	15	25	60
5.0 - 6.0	CLAY	15	25	60
6.0 - 7.0	CLAY	15	25	60
7.0 - 8.0	CLAY	15	25	60
8.0 - 9.0	CLAY	15	25	60
9.0 - 10.0	CLAY	15	25	60
10.0 - 11.0	CLAY	15	25	60
11.0 - 12.0	CLAY	15	25	60
12.0 - 13.0	CLAY	15	25	60
13.0 - 14.0	CLAY	15	25	60
14.0 - 15.0	CLAY	15	25	60
15.0 - 16.0	CLAY	15	25	60
16.0 - 17.0	CLAY	15	25	60
17.0 - 18.0	CLAY	15	25	60
18.0 - 19.0	CLAY	15	25	60
19.0 - 20.0	CLAY	15	25	60
20.0 - 21.0	CLAY	15	25	60
21.0 - 22.0	CLAY	15	25	60
22.0 - 23.0	CLAY	15	25	60
23.0 - 24.0	CLAY	15	25	60
24.0 - 25.0	CLAY	15	25	60
25.0 - 26.0	CLAY	15	25	60
26.0 - 27.0	CLAY	15	25	60
27.0 - 28.0	CLAY	15	25	60
28.0 - 29.0	CLAY	15	25	60
29.0 - 30.0	CLAY	15	25	60
30.0 - 31.0	CLAY	15	25	60
31.0 - 32.0	CLAY	15	25	60
32.0 - 33.0	CLAY	15	25	60
33.0 - 34.0	CLAY	15	25	60
34.0 - 35.0	CLAY	15	25	60
35.0 - 36.0	CLAY	15	25	60
36.0 - 37.0	CLAY	15	25	60
37.0 - 38.0	CLAY	15	25	60
38.0 - 39.0	CLAY	15	25	60
39.0 - 40.0	CLAY	15	25	60
40.0 - 41.0	CLAY	15	25	60
41.0 - 42.0	CLAY	15	25	60
42.0 - 43.0	CLAY	15	25	60
43.0 - 44.0	CLAY	15	25	60
44.0 - 45.0	CLAY	15	25	60
45.0 - 46.0	CLAY	15	25	60
46.0 - 47.0	CLAY	15	25	60
47.0 - 48.0	CLAY	15	25	60
48.0 - 49.0	CLAY	15	25	60
49.0 - 50.0	CLAY	15	25	60

101.1
 101.2
 101.3
 101.4
 101.5
 101.6
 101.7
 101.8
 101.9
 101.10
 101.11
 101.12
 101.13
 101.14
 101.15
 101.16
 101.17
 101.18
 101.19
 101.20
 101.21
 101.22
 101.23
 101.24
 101.25
 101.26
 101.27
 101.28
 101.29
 101.30
 101.31
 101.32
 101.33
 101.34
 101.35
 101.36
 101.37
 101.38
 101.39
 101.40
 101.41
 101.42
 101.43
 101.44
 101.45
 101.46
 101.47
 101.48
 101.49
 101.50

101.1
 101.2
 101.3
 101.4
 101.5
 101.6
 101.7
 101.8
 101.9
 101.10
 101.11
 101.12
 101.13
 101.14
 101.15
 101.16
 101.17
 101.18
 101.19
 101.20
 101.21
 101.22
 101.23
 101.24
 101.25
 101.26
 101.27
 101.28
 101.29
 101.30
 101.31
 101.32
 101.33
 101.34
 101.35
 101.36
 101.37
 101.38
 101.39
 101.40
 101.41
 101.42
 101.43
 101.44
 101.45
 101.46
 101.47
 101.48
 101.49
 101.50

101.1
 101.2
 101.3
 101.4
 101.5
 101.6
 101.7
 101.8
 101.9
 101.10
 101.11
 101.12
 101.13
 101.14
 101.15
 101.16
 101.17
 101.18
 101.19
 101.20
 101.21
 101.22
 101.23
 101.24
 101.25
 101.26
 101.27
 101.28
 101.29
 101.30
 101.31
 101.32
 101.33
 101.34
 101.35
 101.36
 101.37
 101.38
 101.39
 101.40
 101.41
 101.42
 101.43
 101.44
 101.45
 101.46
 101.47
 101.48
 101.49
 101.50

101.1
 101.2
 101.3
 101.4
 101.5
 101.6
 101.7
 101.8
 101.9
 101.10
 101.11
 101.12
 101.13
 101.14
 101.15
 101.16
 101.17
 101.18
 101.19
 101.20
 101.21
 101.22
 101.23
 101.24
 101.25
 101.26
 101.27
 101.28
 101.29
 101.30
 101.31
 101.32
 101.33
 101.34
 101.35
 101.36
 101.37
 101.38
 101.39
 101.40
 101.41
 101.42
 101.43
 101.44
 101.45
 101.46
 101.47
 101.48
 101.49
 101.50



OWNER:
JANE P. KINZIE
 8913 MEDFORD AVE LANE
 BETHESDA, MARYLAND 20817
 (202) 956-4307

NOTES:
 1 AREA OF SUBJECTS, 14689043
 2 AREA DESIGNATED TO BE REMOVED, 14689043
 3 EXISTING ZONING, R-2
 4 NUMBER OF LOTS PER PARCEL, 1
 5 NUMBER OF LOTS PER PARCEL, 1
 6 INDIVIDUAL SEWERAGE DISPOSAL SYSTEM
 7 EXISTING SEWERAGE DISPOSAL SYSTEM, 14689043
 8 LOCATION OF PROPOSED SEWERAGE DISPOSAL SYSTEM
 9 EXISTING SEWERAGE DISPOSAL SYSTEM, 14689043
 10 PROPOSED SEWERAGE DISPOSAL SYSTEM, 14689043
 11 PROPOSED SEWERAGE DISPOSAL SYSTEM, 14689043
 12 PROPOSED SEWERAGE DISPOSAL SYSTEM, 14689043
 13 THERE ARE NO VUELLS OR SEPTIC SYSTEMS ON ADJACENT PARCELS WITHIN THE LEVEL OF THE SUBJECT PROPERTY.

**PRELIMINARY PLAN
 KINZIE PROPERTY**
 Montgomery County, Maryland

THOMAS A. MADDOX
 PROFESSIONAL LAND SURVEYOR
 8933 Shady Grove Court
 Gaithersburg, MD 20877
 (301) 984-5804

Date: AUGUST 2003
 Scale: 1" = 200'



11/23/03 - REV LAYOUT LOTS 1, 2 & 3 TO ADDRESS 19725
REVISED BY ME & S. SELIGER
2-24-04 REVISE TO SHOW 6 LOTS / 1 OUTLOT
5-18-04 ADD BAND BOUND ENCLOSURE LOT 1
5-21-04 REVISED PER CIV 2-24-04 REVIEW COMMENTS