

THE MARYLAND-NATIONAL CAPITAL PARK AND PLANNING COMMISSION
8787 Georgia Avenue • Silver Spring, Maryland 20910-3760

MCPB
Item # 1
5-27-04

May 21, 2004

MEMORANDUM

TO: Montgomery County Planning Board

VIA: Jeff Zyontz, ^{JZ} Chief
Countywide Planning

FROM: Kathy Woodworth for the ^{KCW} Park and Planning Department, 301-495-4525
Transportation Planning

SUBJECT: Highway Reservations, 2004

This item is the formal action needed by the Planning Board to continue a reservation of land for public use. Attached is a copy of the plat.

STAFF RECOMMENDATION

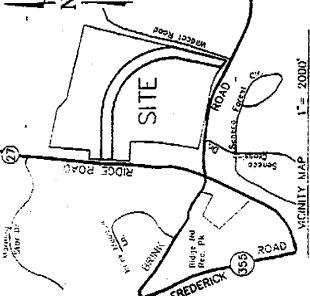
Approval of Resolution to continue in reservation for three years for:

Roman Catholic Archdiocese of Washington, DC, Owner – 13.06775 acres
Midcounty Highway

KCW:kw
Attachment

PLAT NO. 22244

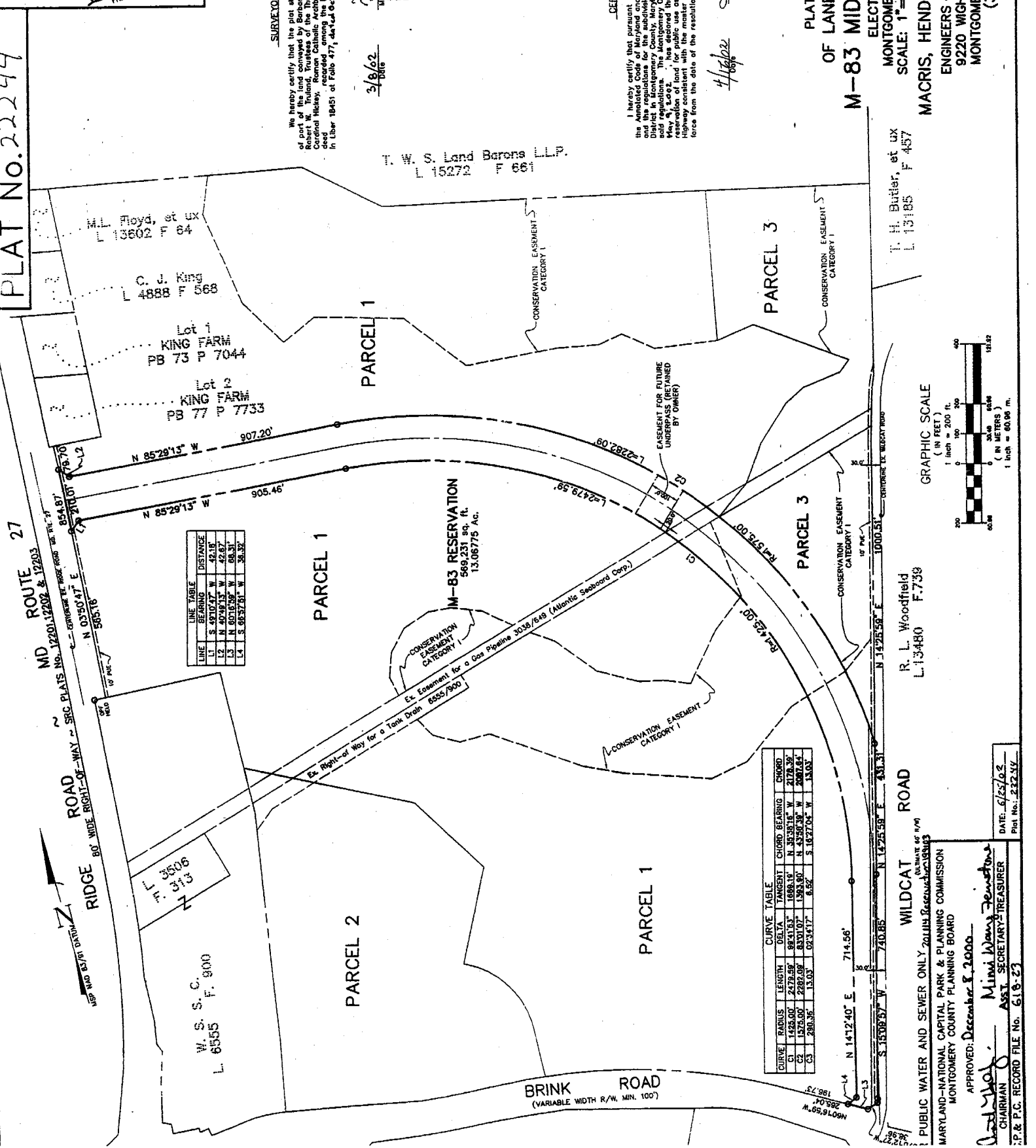
MD ROUTE 27
 SEC. PLATS NO. 12201, 12202 & 12203
 RIDGE 80' WIDE RIGHT-OF-WAY ~ SEC. PLATS NO. 12201, 12202 & 12203
 80' WIDE RIGHT-OF-WAY ~ SEC. PLATS NO. 12201, 12202 & 12203



TAX MAP No. FV 122

| LINE | BEARING | DISTANCE |
|------|-----------------|----------|
| U1 | S. 42°10'47" W. | 42.18' |
| U2 | N. 40°49'15" W. | 42.87' |
| U3 | N. 60°15'38" W. | 58.32' |
| U4 | S. 68°37'01" W. | 36.32' |

| CURVE | RADIUS | LENGTH | DELTA | TANGENT | CHORD |
|-------|----------|----------|-----------|----------|--------------------------|
| C1 | 1425.00' | 2472.50' | 98°41'53" | 1688.15' | N. 33°38'15" W. 2178.39' |
| C2 | 1575.00' | 2282.09' | 83°01'07" | 1393.90' | N. 45°58'39" W. 2087.64' |
| C3 | 280.36' | 13.03' | 02°34'17" | 6.52' | S. 16°27'04" W. 13.03' |



W. S. S. C.
 L. 6555 F. 800

Lot 1
 KING FARM
 PB 73 P 7044

Lot 2
 KING FARM
 PB 77 P 7733

M-83 RESERVATION
 569,231 sq. ft.
 13.08775 Ac.

W. S. S. C.
 L. 6555 F. 800

R. L. Woodfield
 L. 13480 F. 739

T. H. Butler, et ux
 L. 13185 F. 457

WILDCAT ROAD
 PUBLIC WATER AND SEWER ONLY
 MARYLAND-NATIONAL CAPITAL PARK & PLANNING COMMISSION
 MONTGOMERY COUNTY PLANNING BOARD

APPROVED: December 8, 2000
 Chairman: *Mimi Wang-Jenkinson*
 ASST. SECRETARY-TREASURER

DATE: 6/25/02
 Plat No.: 22244

PUBLIC WATER AND SEWER ONLY
 MARYLAND-NATIONAL CAPITAL PARK & PLANNING COMMISSION
 MONTGOMERY COUNTY PLANNING BOARD

APPROVED: December 8, 2000
 Chairman: *Mimi Wang-Jenkinson*
 ASST. SECRETARY-TREASURER

DATE: 6/25/02
 Plat No.: 22244

PUBLIC WATER AND SEWER ONLY
 MARYLAND-NATIONAL CAPITAL PARK & PLANNING COMMISSION
 MONTGOMERY COUNTY PLANNING BOARD

APPROVED: December 8, 2000
 Chairman: *Mimi Wang-Jenkinson*
 ASST. SECRETARY-TREASURER

SURVEYOR'S CERTIFICATE

We hereby certify that the plat shown herein is correct; that it is a reservation of part of the land conveyed by Barbara I. Butz o/a/a Barbara Butz Lombardi and Robert W. Truband, Trustees of the Thompson H. Butz Revocable Trust to James Cardinal Heisey, Roman Catholic, residing at 10000 Rockledge Road, Suite 200, in Liber 18481 of Folio 477, dated 6-2-00, to the Montgomery County, Maryland, Engineers • Planners • Surveyors

3/8/02
 2006

Macris, Hendricks & Glascock, P.A.
 By: Douglas H. Riggs, III
 Surveyor
 Md. Reg. No. 10712



CERTIFICATE

I hereby certify that pursuant to the provisions of Article III, Section 7-118 of the Annotated Code of Maryland and Section 50-31 of the Montgomery County Code and the regulations for the subdivision of land for the Montgomery County Code District in Montgomery County, Maryland, and by virtue of its authority to administer said Code, I have declared that 13.08775 acres of land shown herein to be a reservation of land for public use as deemed necessary for the M-83 Midcountry Highway consistent with the master plan. Said public reservation to continue in full force from the date of the resolution for not more than three (3) years.

[Signature]
 Secretary

PLAT OF RESERVATION
 OF LAND FOR PUBLIC USE
 M-83 MIDCOUNTRY HIGHWAY
 ELECTION DISTRICT NO. 2
 MONTGOMERY COUNTY, MARYLAND
 SCALE: 1" = 200' OCTOBER, 2001
 MACRIS, HENDRICKS & GLASCOCK, P.A.
 ENGINEERS • PLANNERS • SURVEYORS
 9220 WIGHTMAN ROAD, SUITE 120
 MONTGOMERY VILLAGE, MD 20886
 (301) 670-0840

