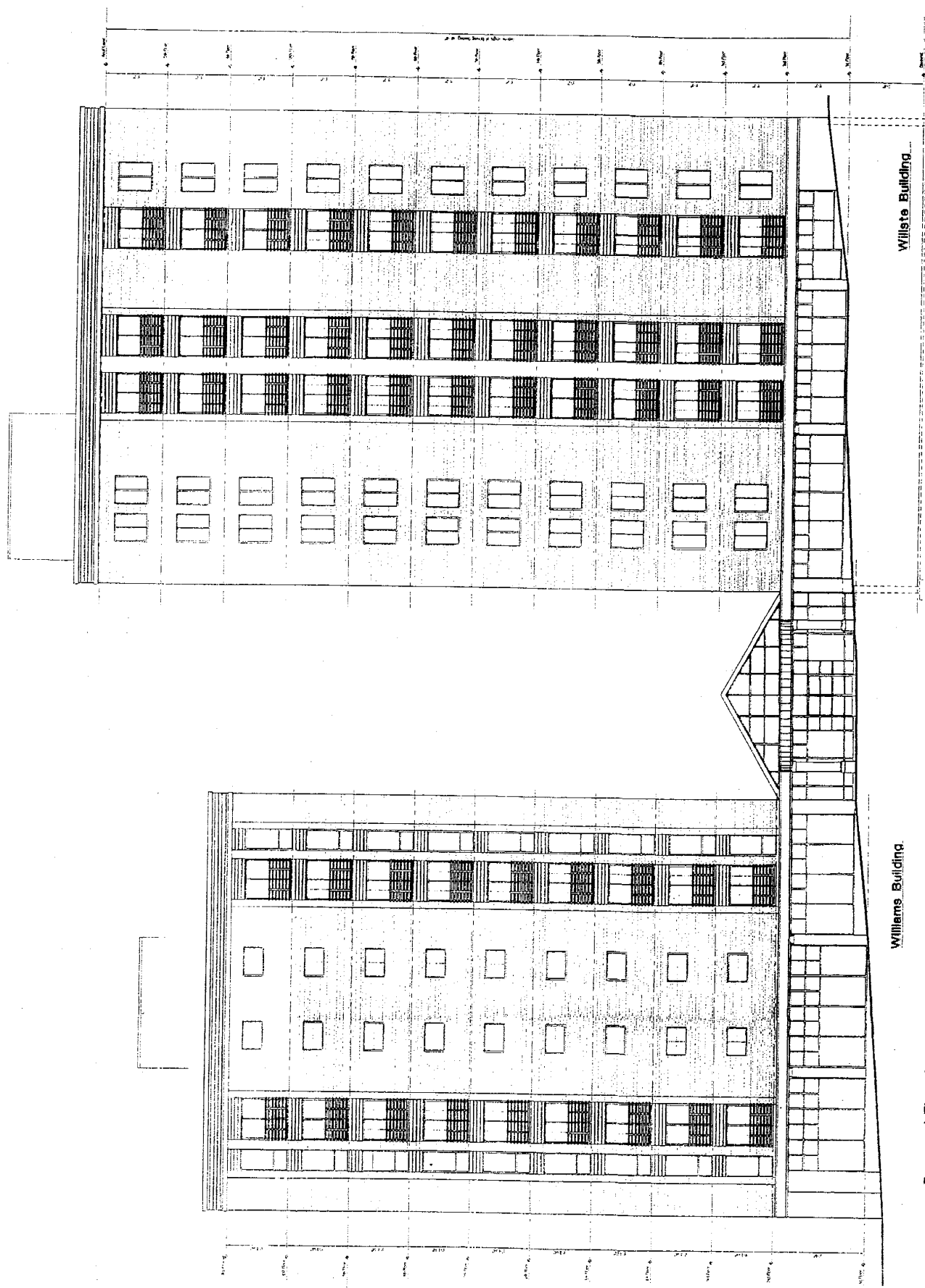


A. R. MEYERS + ASSOCIATES
ARCHITECTS, INC. AIA
ARCHITECTURAL INTERIORS PLANNING

William & Wilste Building
125 - 124 BROADWAY, NEW YORK, NY 10038
Proposed Front Elevation

March 15, 2004
1-3000-1
100%



Wilste Building

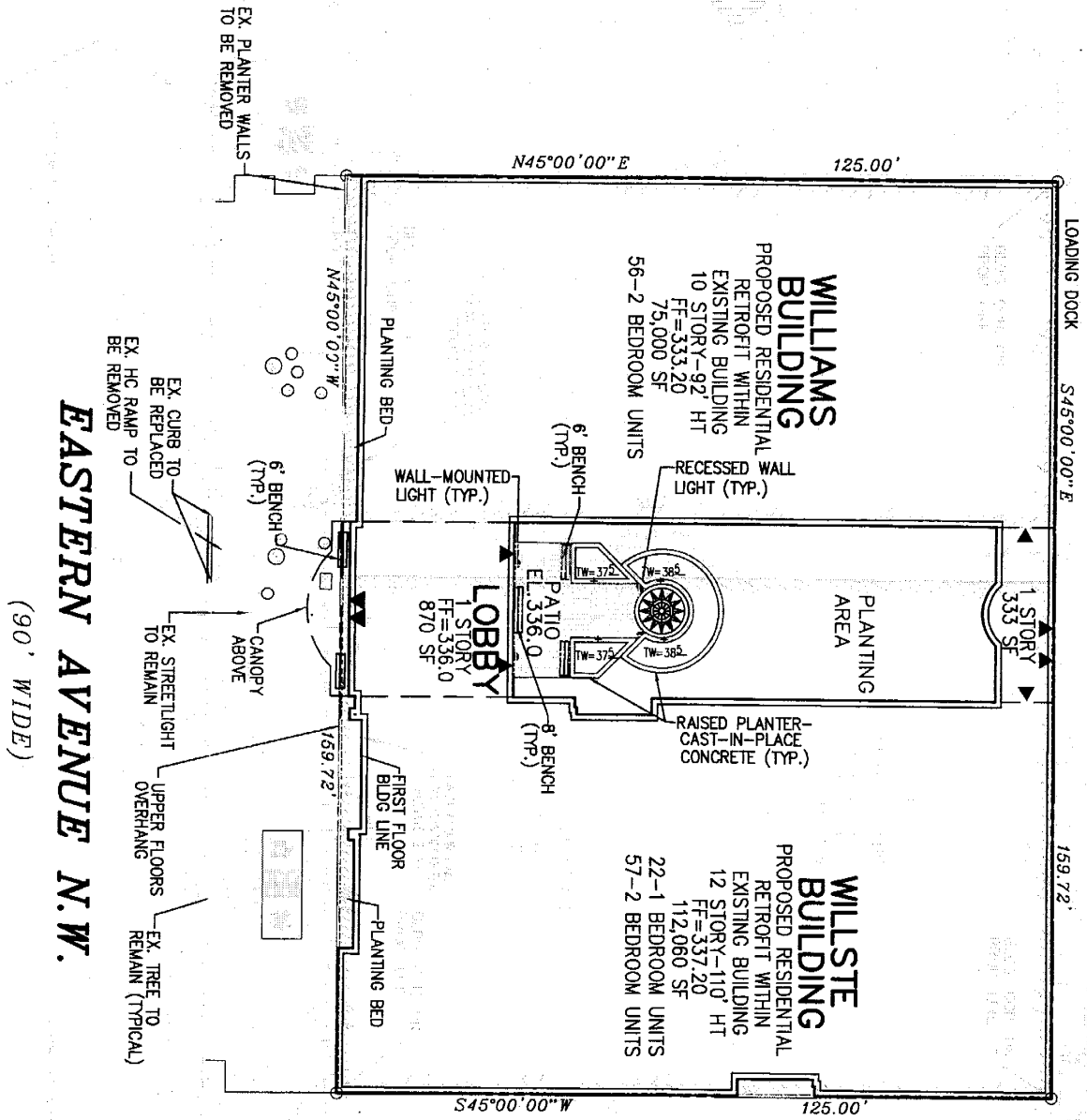
Williams Building

Proposed Elevation

FOR REVIEW AND COMMENT ONLY - NOT FOR CONSTRUCTION

1-3000-1

ALLEY



STATE OF MARYLAND LINE
DISTRICT OF COLUMBIA LINE

EASTERN AVENUE N.W.
(90' WIDE)



HADCO
BEACON BOLLARD
MODEL: CLARIB-BRONZE OR EQUAL
50 WATT HPS

LOCAL DISTRIBUTOR:
GENLITE THOMAS GROUP, LLC
5100 QUAILFORD ROAD
COLUMBIA, MD 21046
PHONE: 410.782.2773
FAX: 410.522.2810

• PLAN SYMBOL
NOT TO SCALE



HADCO-ARCHITECTURAL STEPIYES
MODEL: RST OR EQUAL
8 WATT FLUORESCENT LAMP

LOCAL DISTRIBUTOR:
GENLITE THOMAS GROUP, LLC
5100 QUAILFORD ROAD
COLUMBIA, MD 21046
PHONE: 410.782.2773
FAX: 410.522.2810

• PLAN SYMBOL
NOT TO SCALE



HADCO
CONTemporary NARROW GLOBE
MODEL: CLARK-BRONZE OR EQUAL
70 WATT HPS

LOCAL DISTRIBUTOR:
GENLITE THOMAS GROUP, LLC
5100 QUAILFORD ROAD
COLUMBIA, MD 21046
PHONE: 410.782.2773
FAX: 410.522.2810

• PLAN SYMBOL
NOT TO SCALE



HADCO WALL BRACKET
MODEL: # M028S OR EQUAL
BRONZE

LOCAL DISTRIBUTOR:
GENLITE THOMAS GROUP, LLC
5100 QUAILFORD ROAD
COLUMBIA, MD 21046
PHONE: 410.782.2773
FAX: 410.522.2810

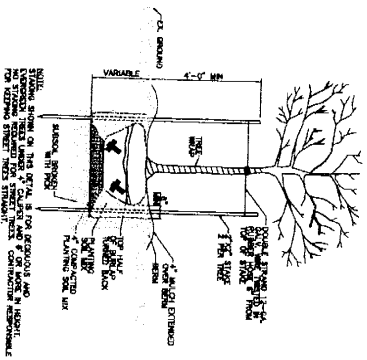
• PLAN SYMBOL
NOT TO SCALE

WALL-MOUNTED LIGHT DETAIL
NOT TO SCALE

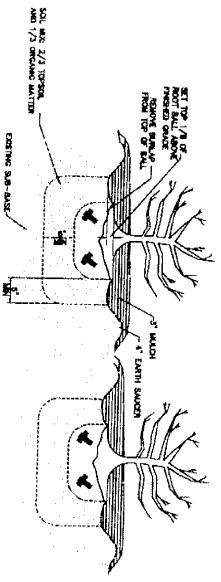
PLANT SCHEDULE

QUANTITY	DESCRIPTION	PLANT	SIZE	NOTES
1	BEACON BOLLARD	HADCO	50 WATT HPS	
1	ARCHITECTURAL STEPIYES	HADCO	8 WATT FLUORESCENT LAMP	
1	CONTemporary NARROW GLOBE	HADCO	70 WATT HPS	
1	WALL BRACKET	HADCO	BRONZE	
1	STAGGER PLANT SPACING			
1	GROUND COVER PLANTING			
1	SHRUB PLANTING			
1	PLANTING AND STAKING			

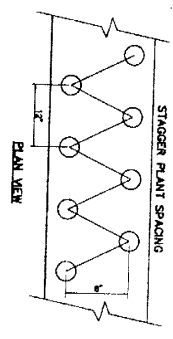
PLANTING AND STAKING DETAIL
NOT TO SCALE



SHRUB PLANTING DETAIL
NOT TO SCALE



STAGGER PLANT SPACING



GROUND COVER PLANTING DETAIL
NOT TO SCALE



WILLIAMS & WILLSTE BUILDING
SILVER SPRING
13TH ELECTION DISTRICT
MONTGOMERY COUNTY, MARYLAND

RST
DESIGN DEVELOPMENT
101 NORTH BAY DRIVE
SILVER SPRING, MD 20910
PHONE: 410.221.1111
FAX: 410.221.1112

Landscape & Lighting Details