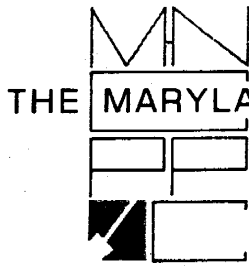


Item #16



THE MARYLAND-NATIONAL CAPITAL PARK AND PLANNING COMMISSION

8787 Georgia Avenue • Silver Spring, Maryland 20910-3760

M E M O R A N D U M

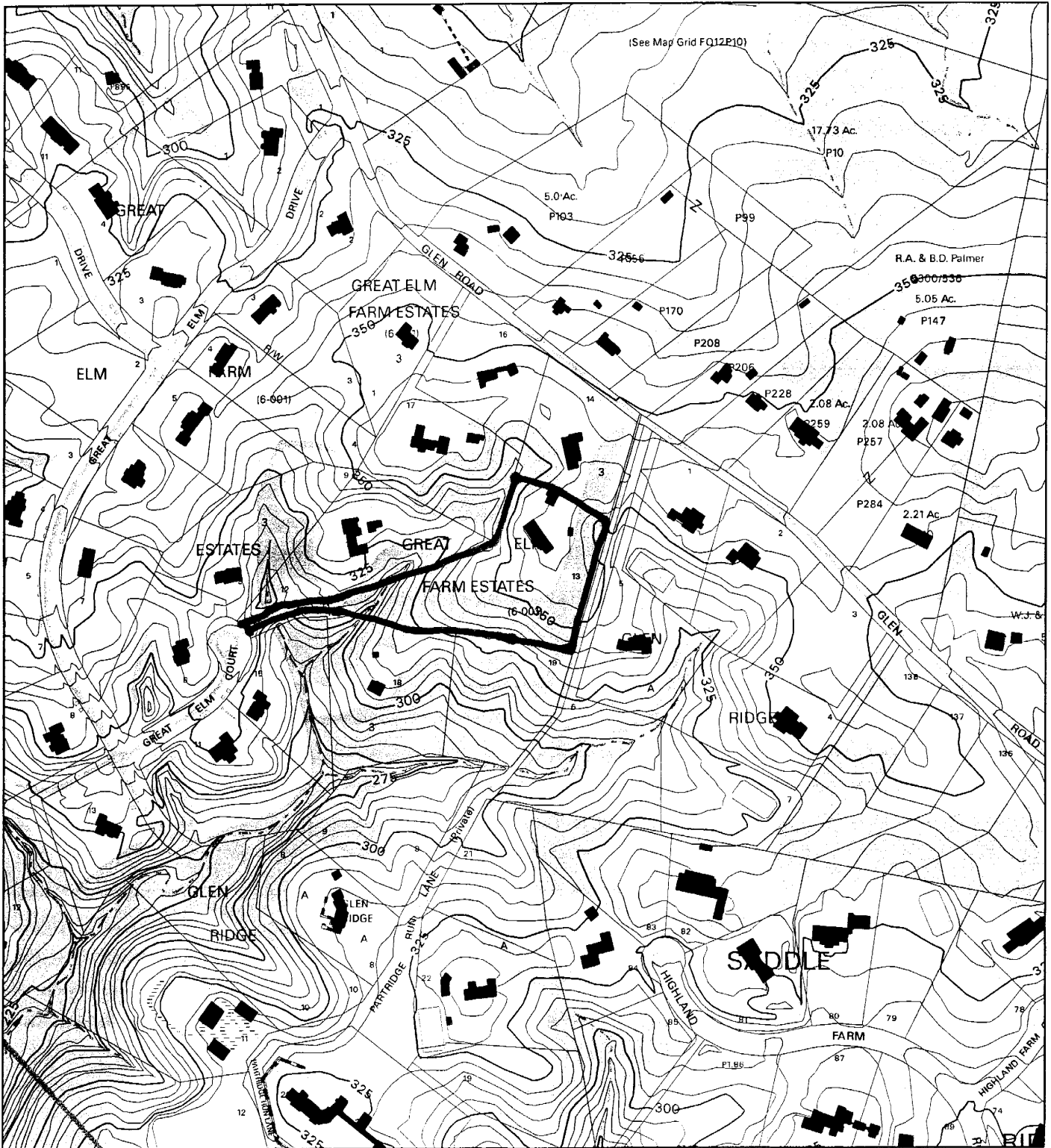
DATE: July 16, 2004
TO: Montgomery County Planning Board
FROM: Catherine Conlon
Development Review Division
(301) 495-4542
SUBJECT: Informational Maps for Subdivision Items on the
Planning Board's Agenda for July 22, 2004.

Attached are copies of plan drawings for Item #01, #16, #17 and #18. These subdivision items are scheduled for Planning Board consideration on July 22, 2004. The items are further identified as follows:

- Agenda Item #01 - Preliminary Plan 1-00009
Armenian Youth Center
- Agenda Item #16 - Preliminary Plan 1-04066
Great Elm Farm Estates
- Agenda Item #17 - Preliminary Plan 1-04090
Fellowship Meadows
- Agenda Item #18 - Preliminary Plan 1-04064
Deer Park

Attachment

GREAT ELM FARM ESTATES (1-04066)



Map compiled on July 16, 2004 at 10:46 AM | Site located on base sheet no - 215NW11

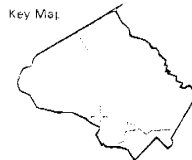
NOTICE

The planimetric, property, and topographic information shown on this map is based on copyrighted Map Products from the Montgomery County Department of Park and Planning of the Maryland-National Capital Park and Planning Commission, and may not be copied or reproduced without written permission from M-NCPPC.

Property lines are compiled by adjusting the property lines to topography created from aerial photography and should not be interpreted as actual field surveys. Planimetric features were compiled from 1:14400 scale aerial photography using stereo photogrammetric methods.

This map is created from a variety of data sources, and may not reflect the most current conditions in any one location and may not be completely accurate or up to date. All map features are approximately within five feet of their true location. This map may not be the same as a map of the same area plotted at an earlier time as the data is continuously updated. Use of this map, other than for general planning purposes is not recommended. - Copyright 1998

Key Map



N



Research & Technology Center

400

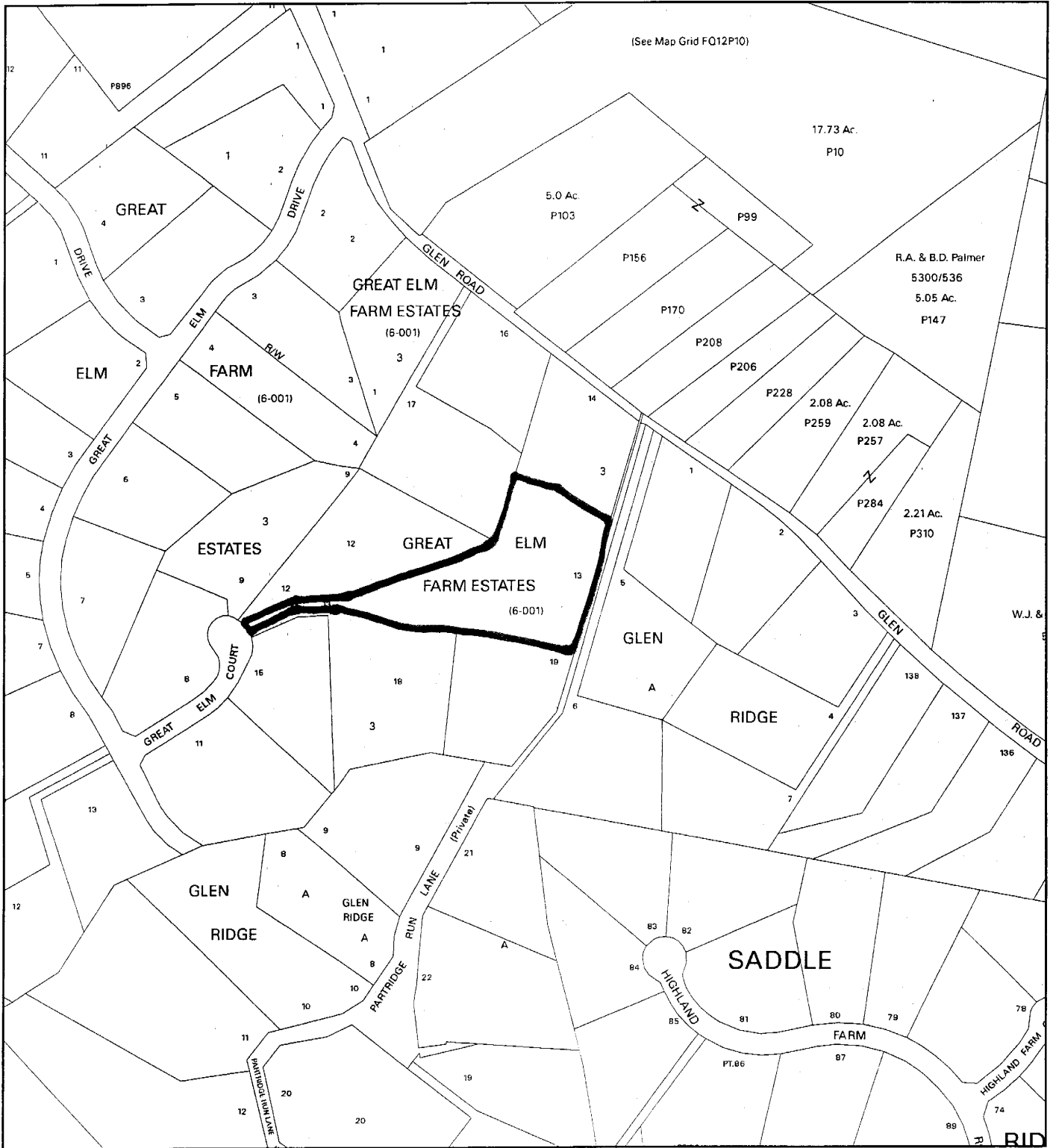
1 inch = 400 feet

1 : 4800

MONTGOMERY COUNTY DEPARTMENT OF PARK AND PLANNING
 THE MARYLAND-NATIONAL CAPITAL PARK AND PLANNING COMMISSION

8787 Georgia Avenue - Silver Spring, Maryland 20910-3761

GREAT ELM FARM ESTATES (1-04066)



Map compiled on July 16, 2004 at 10:44 AM | Site located on base sheet no - 215NW11

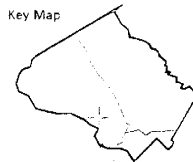
NOTICE

The planimetric, property, and topographic information shown on this map is based on copyrighted Map Products from the Montgomery County Department of Park and Planning of the Maryland -National Capital Park and Planning Commission, and may not be copied or reproduced without written permission from M-NCPPC.

Property lines are compiled by adjusting the property lines to topography created from aerial photography and should not be interpreted as actual field surveys. Planimetric features were compiled from 1:14400 scale aerial photography using stereo photogrammetric methods.

This map is created from a variety of data sources, and may not reflect the most current conditions in any one location and may not be completely accurate or up to date. All map features are approximately within five feet of their true location. This map may not be the same as a map of the same area plotted at an earlier time as the data is continuously updated. Use of this map, other than for general planning purposes is not recommended. - Copyright 1998

Key Map



N



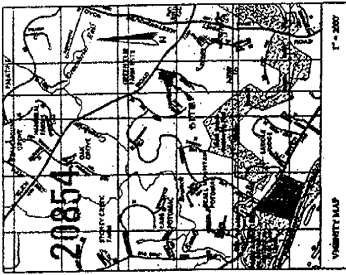
Research & Technology Center

0 400

1 inch = 400 feet
1 : 4800

MONTGOMERY COUNTY DEPARTMENT OF PARK AND PLANNING
THE MARYLAND-NATIONAL CAPITAL PARK AND PLANNING COMMISSION

8787 Georgia Avenue - Silver Spring, Maryland 20910-3760



20854
VARIETY MAP
Scale 1" = 200'

- SITE DATA**
1. Applicant: Appropriate City/County
 2. Site: 20854 Farm
 3. Proposed: 20854 Farm
 4. Proposed: 20854 Farm
 5. Proposed: 20854 Farm
 6. Proposed: 20854 Farm

DEVELOPMENT BY	Proposed	Lot 20	Lot 21	Lot 22	Lot 23	Lot 24	Lot 25	Lot 26	Lot 27	Lot 28	Lot 29	Lot 30	Lot 31	Lot 32	Lot 33	Lot 34	Lot 35	Lot 36	Lot 37	Lot 38	Lot 39	Lot 40	Lot 41	Lot 42	Lot 43	Lot 44	Lot 45
Area	100	100	100	100	100	100	100	100	100	100	100	100	100	100	100	100	100	100	100	100	100	100	100	100	100	100	100
Volume	100	100	100	100	100	100	100	100	100	100	100	100	100	100	100	100	100	100	100	100	100	100	100	100	100	100	100
Area	100	100	100	100	100	100	100	100	100	100	100	100	100	100	100	100	100	100	100	100	100	100	100	100	100	100	100
Volume	100	100	100	100	100	100	100	100	100	100	100	100	100	100	100	100	100	100	100	100	100	100	100	100	100	100	100

DEVELOPMENT BY

The site is located within the Urban Branch Watershed.

Engineering and topographic information shown on this plan is compiled from approved Preliminary Information Plan or other reliable sources.

Engineering and topographic information shown on this plan is compiled from approved Preliminary Information Plan or other reliable sources.

Engineering and topographic information shown on this plan is compiled from approved Preliminary Information Plan or other reliable sources.

Engineering and topographic information shown on this plan is compiled from approved Preliminary Information Plan or other reliable sources.

Engineering and topographic information shown on this plan is compiled from approved Preliminary Information Plan or other reliable sources.

Engineering and topographic information shown on this plan is compiled from approved Preliminary Information Plan or other reliable sources.

Engineering and topographic information shown on this plan is compiled from approved Preliminary Information Plan or other reliable sources.

Engineering and topographic information shown on this plan is compiled from approved Preliminary Information Plan or other reliable sources.

Engineering and topographic information shown on this plan is compiled from approved Preliminary Information Plan or other reliable sources.

Engineering and topographic information shown on this plan is compiled from approved Preliminary Information Plan or other reliable sources.

Engineering and topographic information shown on this plan is compiled from approved Preliminary Information Plan or other reliable sources.

Engineering and topographic information shown on this plan is compiled from approved Preliminary Information Plan or other reliable sources.

Engineering and topographic information shown on this plan is compiled from approved Preliminary Information Plan or other reliable sources.

Engineering and topographic information shown on this plan is compiled from approved Preliminary Information Plan or other reliable sources.

Engineering and topographic information shown on this plan is compiled from approved Preliminary Information Plan or other reliable sources.

Engineering and topographic information shown on this plan is compiled from approved Preliminary Information Plan or other reliable sources.

Engineering and topographic information shown on this plan is compiled from approved Preliminary Information Plan or other reliable sources.

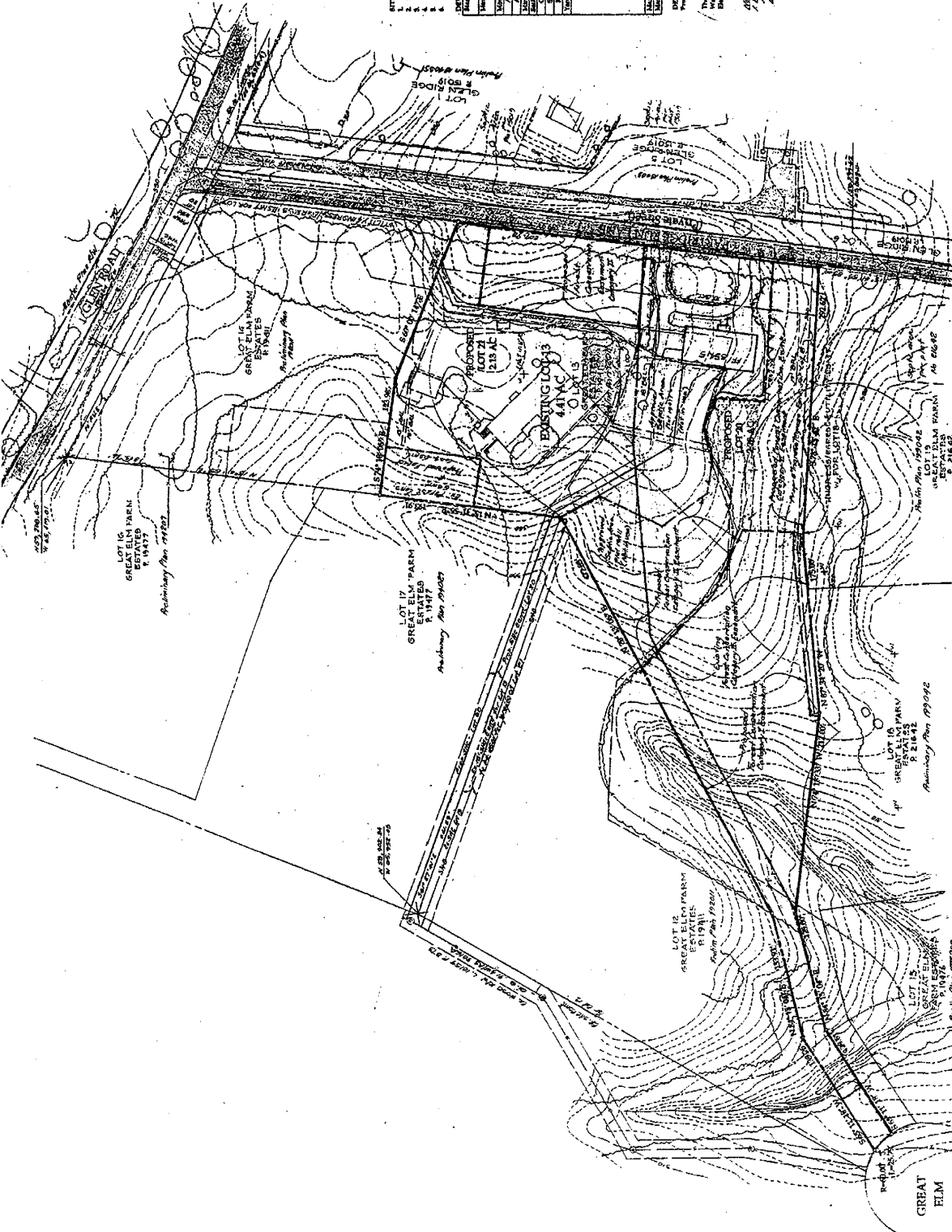
Engineering and topographic information shown on this plan is compiled from approved Preliminary Information Plan or other reliable sources.

Engineering and topographic information shown on this plan is compiled from approved Preliminary Information Plan or other reliable sources.

Engineering and topographic information shown on this plan is compiled from approved Preliminary Information Plan or other reliable sources.

Engineering and topographic information shown on this plan is compiled from approved Preliminary Information Plan or other reliable sources.

Engineering and topographic information shown on this plan is compiled from approved Preliminary Information Plan or other reliable sources.



ENGINEER'S CERTIFICATE

I hereby certify that the boundary and topographic information shown herein is correct, based on the information provided.

6/19/04

WASC DATUM

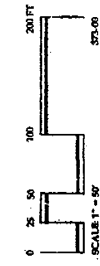
Preliminary Plan of Subdivision
GREAT ELM FARM ESTATES
Block 3, Lot 13
South Elbow District
Montgomery County, Maryland

NO.	BY	DATE	REVISIONS
1	PLP	11/11/03	Initial Plan
2	PLP	11/11/03	Revised Plan
3	PLP	11/11/03	Revised Plan
4	PLP	11/11/03	Revised Plan
5	PLP	11/11/03	Revised Plan
6	PLP	11/11/03	Revised Plan
7	PLP	11/11/03	Revised Plan
8	PLP	11/11/03	Revised Plan
9	PLP	11/11/03	Revised Plan
10	PLP	11/11/03	Revised Plan
11	PLP	11/11/03	Revised Plan
12	PLP	11/11/03	Revised Plan
13	PLP	11/11/03	Revised Plan
14	PLP	11/11/03	Revised Plan
15	PLP	11/11/03	Revised Plan
16	PLP	11/11/03	Revised Plan
17	PLP	11/11/03	Revised Plan
18	PLP	11/11/03	Revised Plan
19	PLP	11/11/03	Revised Plan
20	PLP	11/11/03	Revised Plan
21	PLP	11/11/03	Revised Plan
22	PLP	11/11/03	Revised Plan
23	PLP	11/11/03	Revised Plan
24	PLP	11/11/03	Revised Plan
25	PLP	11/11/03	Revised Plan
26	PLP	11/11/03	Revised Plan
27	PLP	11/11/03	Revised Plan
28	PLP	11/11/03	Revised Plan
29	PLP	11/11/03	Revised Plan
30	PLP	11/11/03	Revised Plan
31	PLP	11/11/03	Revised Plan
32	PLP	11/11/03	Revised Plan
33	PLP	11/11/03	Revised Plan
34	PLP	11/11/03	Revised Plan
35	PLP	11/11/03	Revised Plan
36	PLP	11/11/03	Revised Plan
37	PLP	11/11/03	Revised Plan
38	PLP	11/11/03	Revised Plan
39	PLP	11/11/03	Revised Plan
40	PLP	11/11/03	Revised Plan
41	PLP	11/11/03	Revised Plan
42	PLP	11/11/03	Revised Plan
43	PLP	11/11/03	Revised Plan
44	PLP	11/11/03	Revised Plan
45	PLP	11/11/03	Revised Plan

GREAT ELM COURT

PERRINE PLANNING & ZONING, INC.
100 N. WASHINGTON ST., SUITE 200, ROCKVILLE, MD 20850
TELEPHONE: 301-330-1474 FAX: 301-330-1488

GREAT ELM FARM ESTATES: PRELIMINARY PLAN



11/11/03