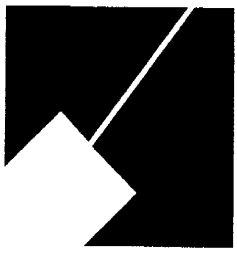


M-NCPPC



MONTGOMERY COUNTY DEPARTMENT OF PARK AND PLANNING

THE MARYLAND-NATIONAL CAPITAL
PARK AND PLANNING COMMISSION

8787 Georgia Avenue
Silver Spring, Maryland 20910-3760
301-495-4500, www.mncppc.org

M E M O R A N D U M

DATE: November 24, 2004
TO: Montgomery County Planning Board
FROM: Catherine Conlon
Development Review Division
(301) 495-4542
SUBJECT: Informational Maps for Subdivision Items on the
Planning Board's Agenda for December 2, 2004.

Attached are copies of plan drawings for item #06, #08, #09, #10 and #12. These subdivision items are scheduled for Planning Board consideration on December 2, 2004. The items are further identified as follows:

Agenda Item #06 - Subdivision Regulation Waiver SRW-05002
Union Cemetery

Agenda Item #08 - Preliminary Plan 1-04097
Alpine Forest

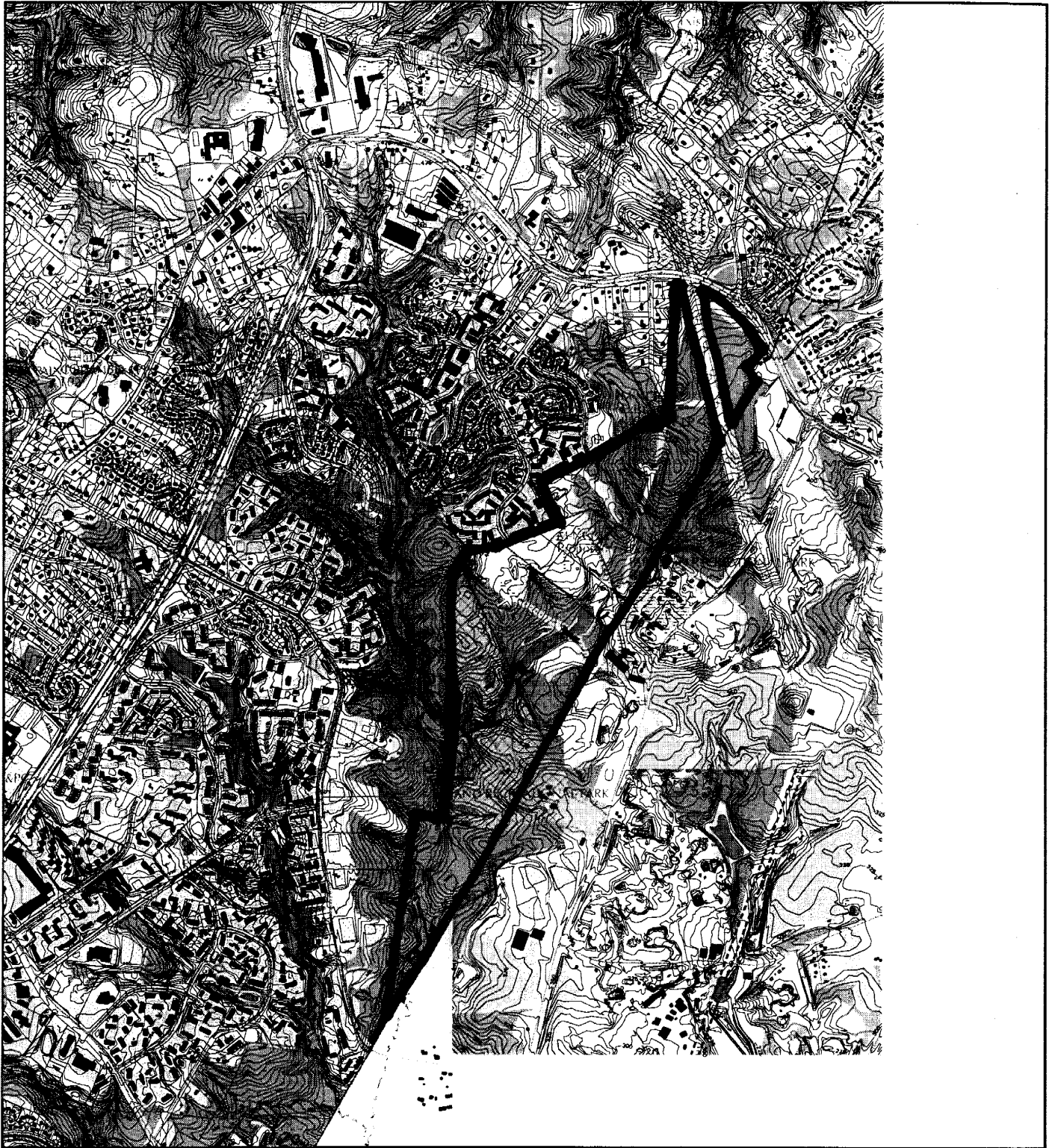
Agenda Item #09 - Preliminary Plan 1-05016
Nottingham Woods

Agenda Item #10 - Preliminary Plan 1-05020
Fairland Golf Community

Agenda Item #12 - Preliminary Plan 1-04055
Washington Christian Society

Attachment

FAIRLAND GOLF COMMUNITY (1-05020) (8-05006)



Map compiled on August 23, 2004 at 4:07 PM | Site located on base sheet no - 219NE05

NOTICE

The planimetric, property, and topographic information shown on this map is based on copyrighted Map Products from the Montgomery County Department of Park and Planning of the Maryland - National Capital Park and Planning Commission, and may not be copied or reproduced without written permission from M-NCPPC.

Property lines are compiled by adjusting the property lines to topography created from aerial photography and should not be interpreted as actual field surveys. Planimetric features were compiled from 1:14400 scale aerial photography using stereo photogrammetric methods.

This map is created from a variety of data sources, and may not reflect the most current conditions in any one location and may not be completely accurate or up to date. All map features are approximately within five feet of their true location. This map may not be the same as a map of the same area plotted at an earlier time as the data is continuously updated. Use of this map, other than for general planning purposes is not recommended. - Copyright 1998

Key Map



N



Research & Technology Center

2000



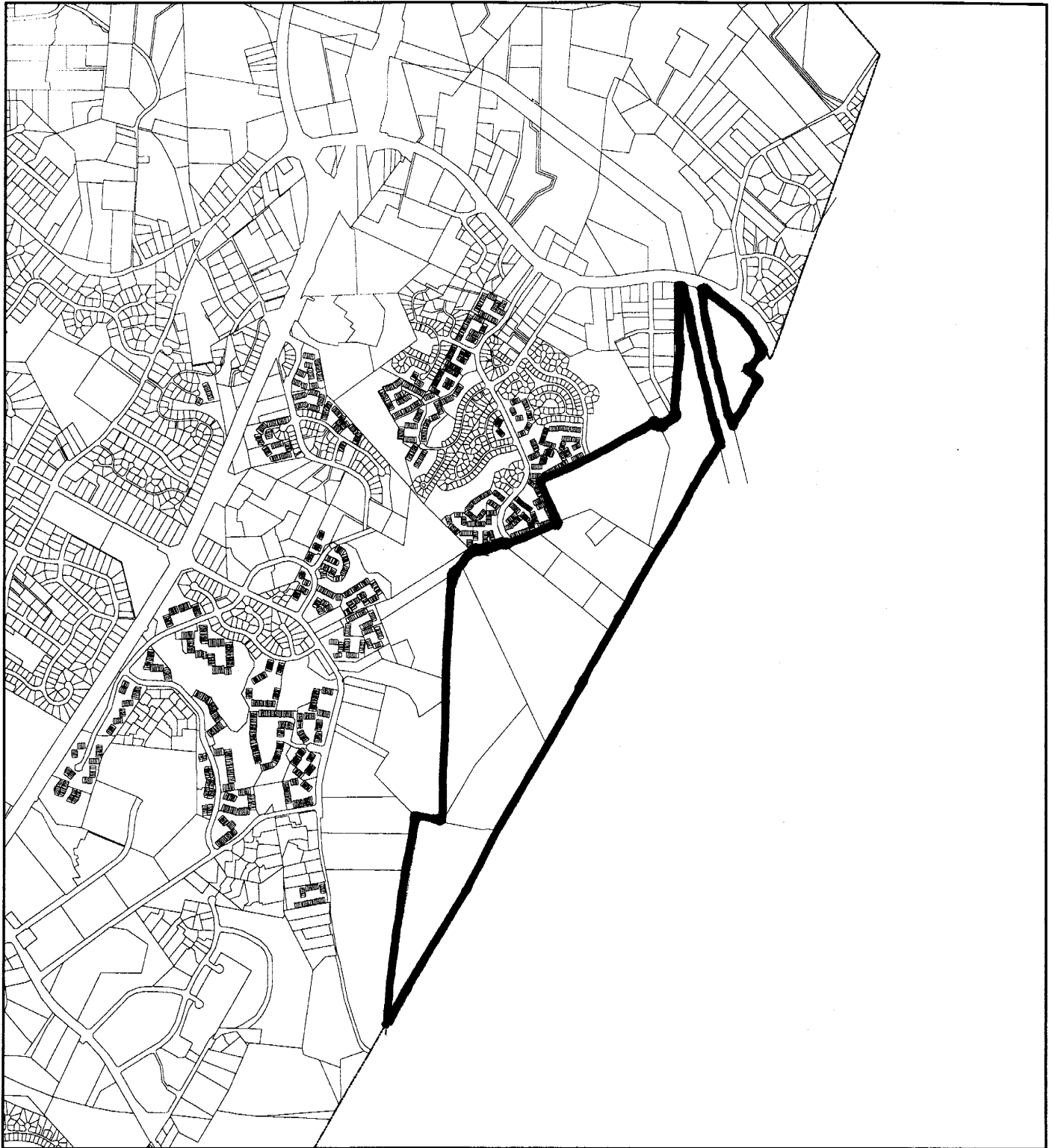
1 inch = 2000 feet
1 : 24000

MONTGOMERY COUNTY DEPARTMENT OF PARK AND PLANNING
THE MARYLAND-NATIONAL CAPITAL PARK AND PLANNING COMMISSION

M-NCPPC

6787 Georgia Avenue - Silver Spring, Maryland 20910-3760

FAIRLAND GOLF COMMUNITY (1-05020) (8-05006)



Map compiled on August 23, 2004 at 4:04 PM | Site located on base sheet no - 219NE05

NOTICE

The planimetric, property, and topographic information shown on this map is based on copyrighted Map Products from the Montgomery County Department of Park and Planning of the Maryland-National Capital Park and Planning Commission, and may not be copied or reproduced without written permission from M-NCPPC.

Property lines are compiled by adjusting the property lines to topography created from aerial photography and should not be interpreted as actual field surveys. Planimetric features were compiled from 1:14400 scale aerial photography using stereo photogrammetric methods.

This map is created from a variety of data sources, and may not reflect the most current conditions in any one location and may not be completely accurate or up to date. All map features are approximately within five feet of their true location. This map may not be the same as a map of the same area plotted at an earlier time as the data is continuously updated. Use of this map, other than for general planning purposes is not recommended. - Copyright 1998

Key Map



Research & Technology Center 2000



1 inch = 2000 feet
1 : 24000

REVISIONS	
NO.	DATE

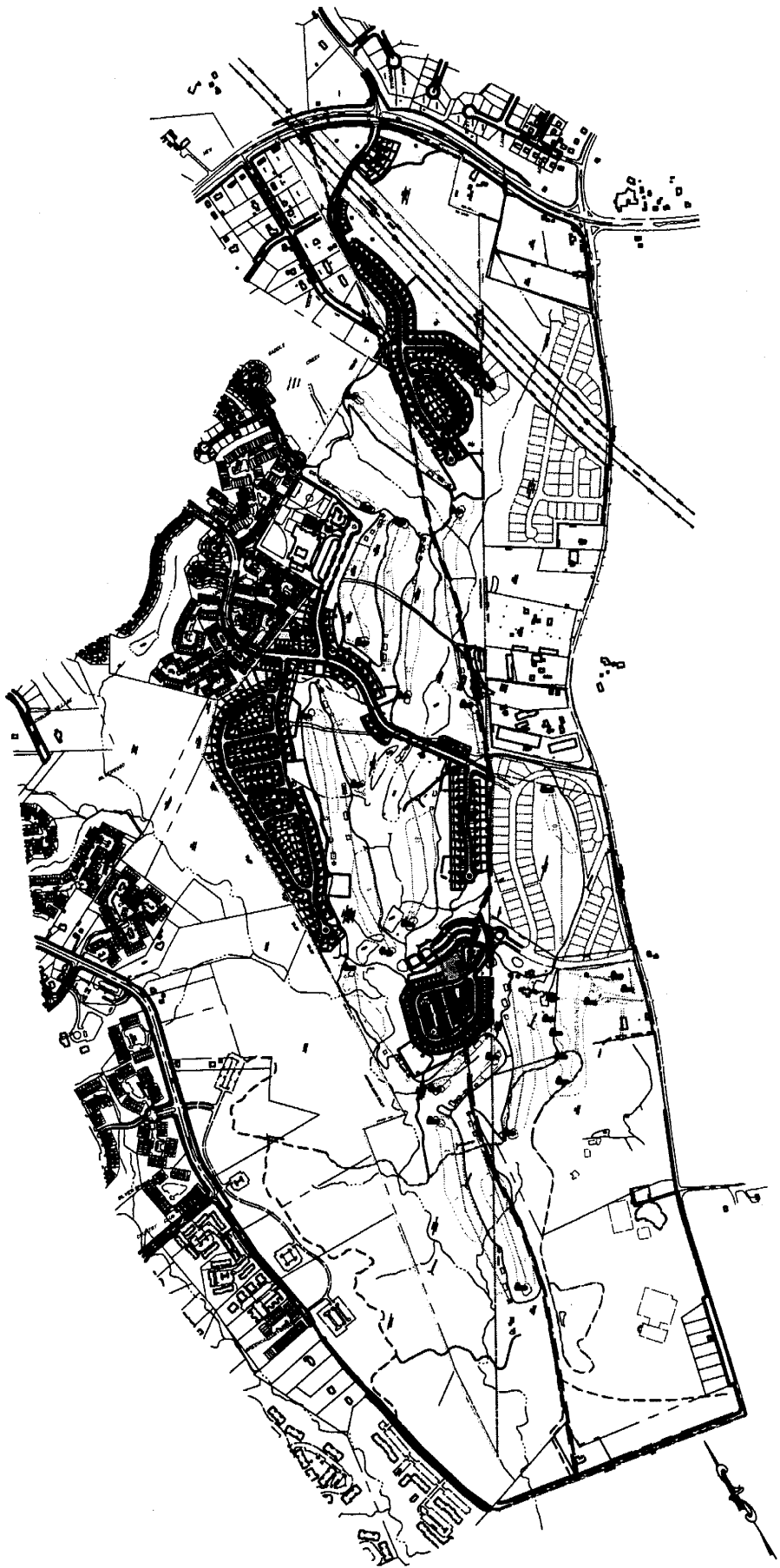
CERTIFICATE OF REGISTERED SURVEYOR
 I HEREBY CERTIFY THAT THE BOUNDARY LINE DATA INDICATED
 HEREON IS CORRECT
[Signature]
 SURVEYOR
 REGISTRATION NO. 10771 DATE

FAIRLAND GOLF COMMUNITY

COMPOSITE PRELIMINARY PLAN

APPLICANT
 THE FAIRLAND GOLF COMMUNITY, INC.
 10000 WOODBURY DRIVE, SUITE 100
 WOODBURY, MARYLAND 21797
 Phone: (301) 441-4000
 Fax: (301) 441-4001

DEVELOPER
 JAMES W. WOODBURY, JR., INC.
 10000 WOODBURY DRIVE, SUITE 100
 WOODBURY, MARYLAND 21797
 Phone: (301) 441-4000
 Fax: (301) 441-4001



Dowberry
 10000 WOODBURY DRIVE, SUITE 100
 WOODBURY, MARYLAND 21797
 Phone: (301) 441-4000
 Fax: (301) 441-4001

DATE	
SCALE	



LOCAL JURISDICTION

MONTGOMERY COUNTY, MARYLAND

COMPOSITE PRELIMINARY PLAN
 FAIRLAND GOLF COMMUNITY
 THE ELECTION DISTRICT

DATE: 10/1/00
 SCALE: 1" = 100'
 NONE