



THE MARYLAND-NATIONAL CAPITAL PARK AND PLANNING COMMISSION

Item #4

M E M O R A N D U M

DATE: January 14, 2005
TO: Montgomery County Planning Board
FROM: Catherine Conlon
Development Review Division
(301) 495-4542
SUBJECT: Informational Maps for Subdivision Items on the
Planning Board's Agenda for January 20, 2005.

Attached are copies of plan drawings for item #04, #06 and #10, and #11. These subdivision items are scheduled for Planning Board consideration on January 20, 2005. The items are further identified as follows:

Agenda Item #04 - Preliminary Plan 1-04098
Baum Property

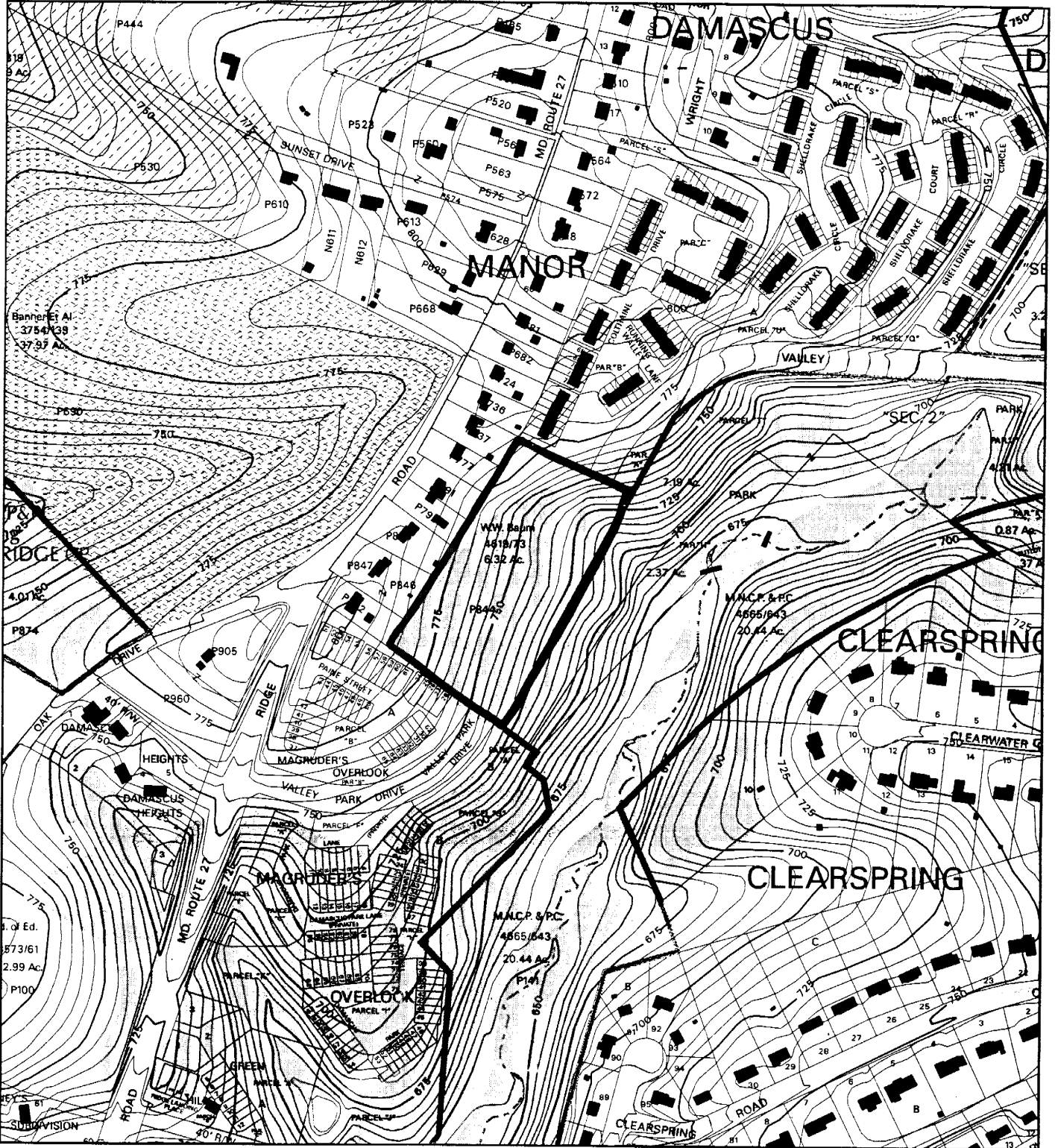
Agenda Item #06 - Preliminary Plan 1-05038
Woodlawn Property

Agenda Item #10 - Preliminary Plan 1-05041
Highgate II

Agenda Item #11 - Preliminary Plan 1-04091
Hutchison Property

Attachment

BAUM PROPERTY (1-04098)



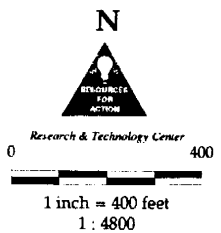
Map compiled on July 06, 2004 at 9:43 AM | Site located on base sheet no - 236NW10

NOTICE

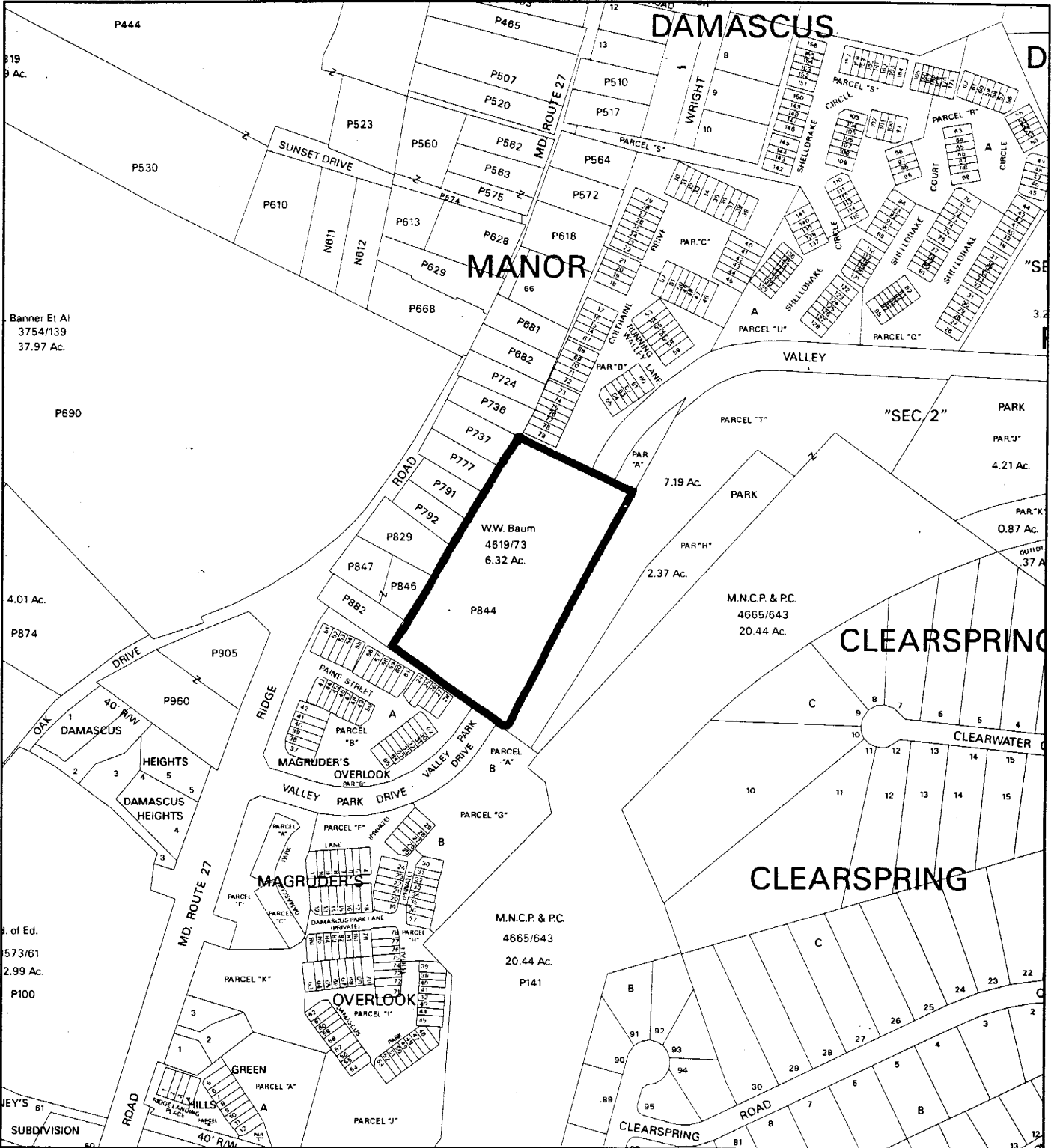
The planimetric, property, and topographic information shown on this map is based on copyrighted Map Products from the Montgomery County Department of Park and Planning of the Maryland-National Capital Park and Planning Commission, and may not be copied or reproduced without written permission from M-NCPPC.

Property lines are compiled by adjusting the property lines to topography created from aerial photography and should not be interpreted as actual field surveys. Planimetric features were compiled from 1:14,400 scale aerial photography using stereo photogrammetric methods.

This map is created from a variety of data sources, and may not reflect the most current conditions in any one location and may not be completely accurate or up to date. All map features are approximately within five feet of their true location. This map may not be the same as a map of the same area plotted at an earlier time as the data is continuously updated. Use of this map, other than for general planning purposes is not recommended. - Copyright 1998



BAUM PROPERTY (1-04098)



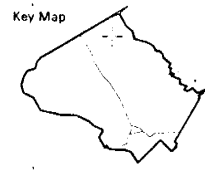
Map compiled on July 06, 2004 at 10:02 AM | Site located on base sheet no - 236NW10

NOTICE

The planimetric, property, and topographic information shown on this map is based on copyrighted Map Products from the Montgomery County Department of Park and Planning of the Maryland - National Capital Park and Planning Commission, and may not be copied or reproduced without written permission from M-NCPPC.

Property lines are compiled by adjusting the property lines to topography created from aerial photography and should not be interpreted as actual field surveys. Planimetric features were compiled from 1:14400 scale aerial photography using stereo photogrammetric methods.

This map is created from a variety of data sources, and may not reflect the most current conditions in any one location and may not be completely accurate or up to date. All map features are approximately within five feet of their true location. This map may not be the same as a map of the same area plotted at an earlier time as the data is continuously updated. Use of this map, other than for general planning purposes is not recommended. - Copyright 1998



N

Research & Technology Center

0 400

1 inch = 400 feet
1 : 4800

