



THE MARYLAND-NATIONAL CAPITAL PARK AND PLANNING COMMISSION

Item #6

MEMORANDUM

**DATE:** January 14, 2005  
**TO:** Montgomery County Planning Board  
**FROM:** Catherine Conlon  
Development Review Division  
(301) 495-4542  
**SUBJECT:** Informational Maps for Subdivision Items on the  
Planning Board's Agenda for January 20, 2005.

---

Attached are copies of plan drawings for item #04, #06 and #10, and #11. These subdivision items are scheduled for Planning Board consideration on January 20, 2005. The items are further identified as follows:

Agenda Item #04 - Preliminary Plan 1-04098  
Baum Property

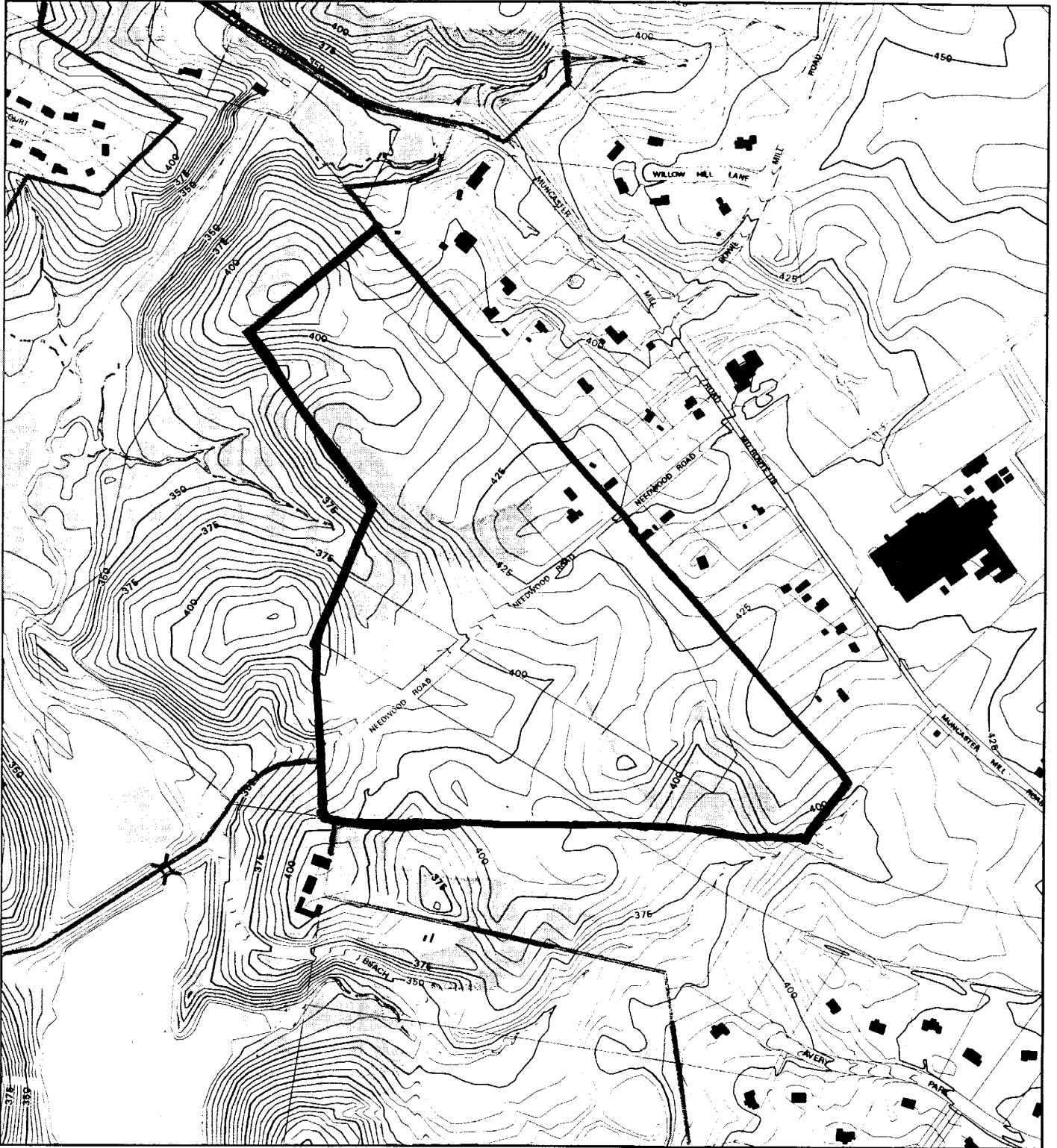
Agenda Item #06 - Preliminary Plan 1-05038  
Woodlawn Property

Agenda Item #10 - Preliminary Plan 1-05041  
Highgate II

Agenda Item #11 - Preliminary Plan 1-04091  
Hutchison Property

Attachment

# WOODLAWN PROPERTY (1-05038)



Map compiled on October 07, 2004 at 11:55 AM | Site located on base sheet no - 223NW06

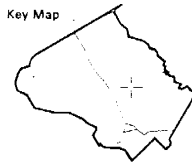
## NOTICE

The planimetric, property, and topographic information shown on this map is based on copyrighted Map Products from the Montgomery County Department of Park and Planning of the Maryland-National Capital Park and Planning Commission, and may not be copied or reproduced without written permission from M-NCPPC.

Property lines are compiled by adjusting the property lines to topography created from aerial photography and should not be interpreted as actual field surveys. Planimetric features were compiled from 1:14400 scale aerial photography using stereo photogrammetric methods.

This map is created from a variety of data sources, and may not reflect the most current conditions in any one location and may not be completely accurate or up to date. All map features are approximately within five feet of their true location. This map may not be the same as a map of the same area plotted at an earlier time as the data is continuously updated. Use of this map, other than for general planning purposes is not recommended. - Copyright 1998

Key Map



N

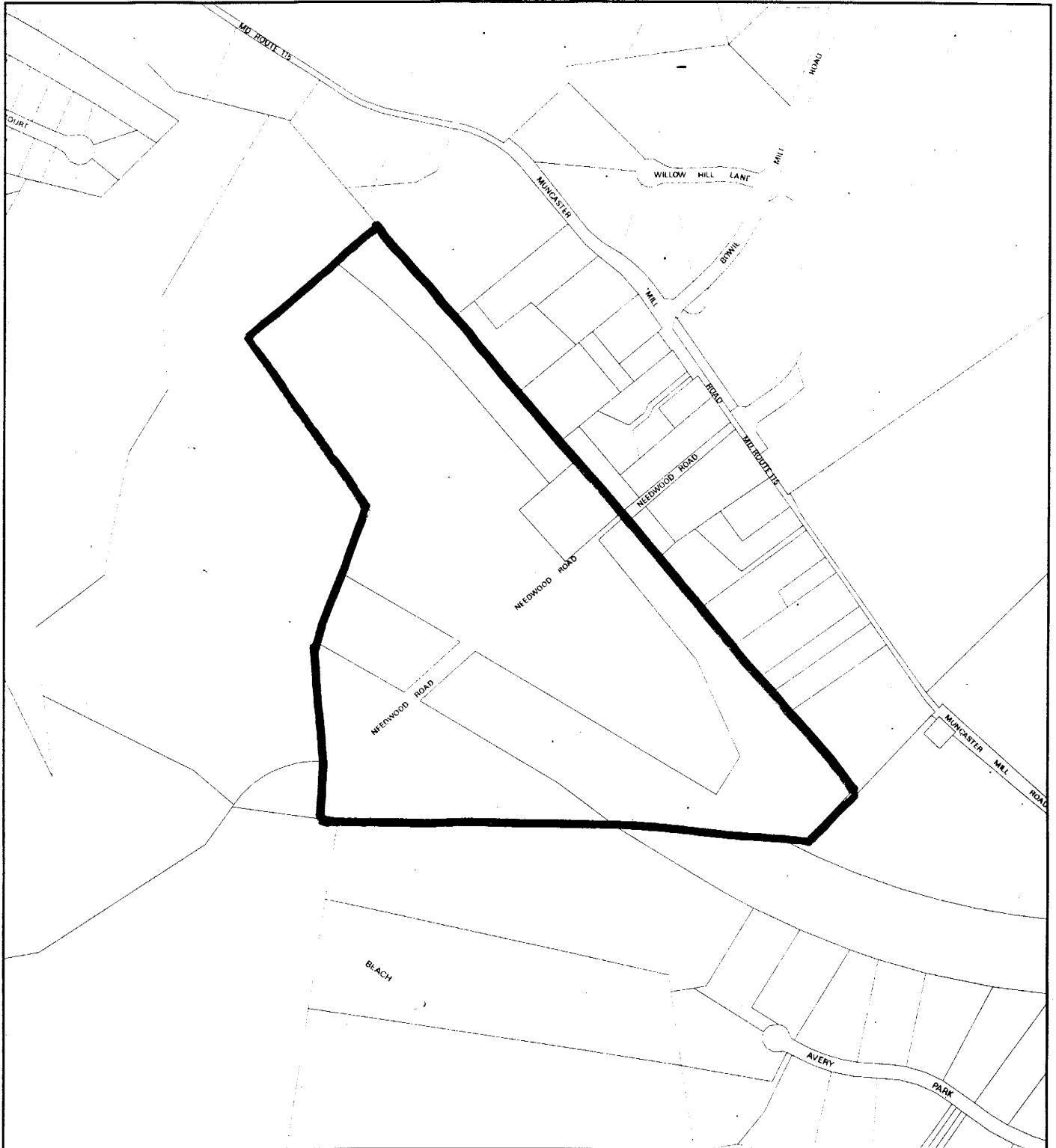


Research & Technology Center



1 inch = 600 feet  
1 : 7200

# WOODLAWN PROPERTY (1-05038)



Map compiled on October 07, 2004 at 12:01 PM | Site located on base sheet no - 223NW06

## NOTICE

The planimetric, property, and topographic information shown on this map is based on copyrighted Map Products from the Montgomery County Department of Park and Planning of the Maryland-National Capital Park and Planning Commission, and may not be copied or reproduced without written permission from M-NCPPC.

Property lines are compiled by adjusting the property lines to topography created from aerial photography and should not be interpreted as actual field surveys. Planimetric features were compiled from 1:14400 scale aerial photography using stereo photogrammetric methods.

This map is created from a variety of data sources, and may not reflect the most current conditions in any one location and may not be completely accurate or up to date. All map features are approximately within five feet of their true location. This map may not be the same as a map of the same area plotted at an earlier time as the data is continuously updated. Use of this map, other than for general planning purposes is not recommended. - Copyright 1998

Key Map



N



Research & Technology Center

0 600

1 inch = 600 feet  
1 : 7200

