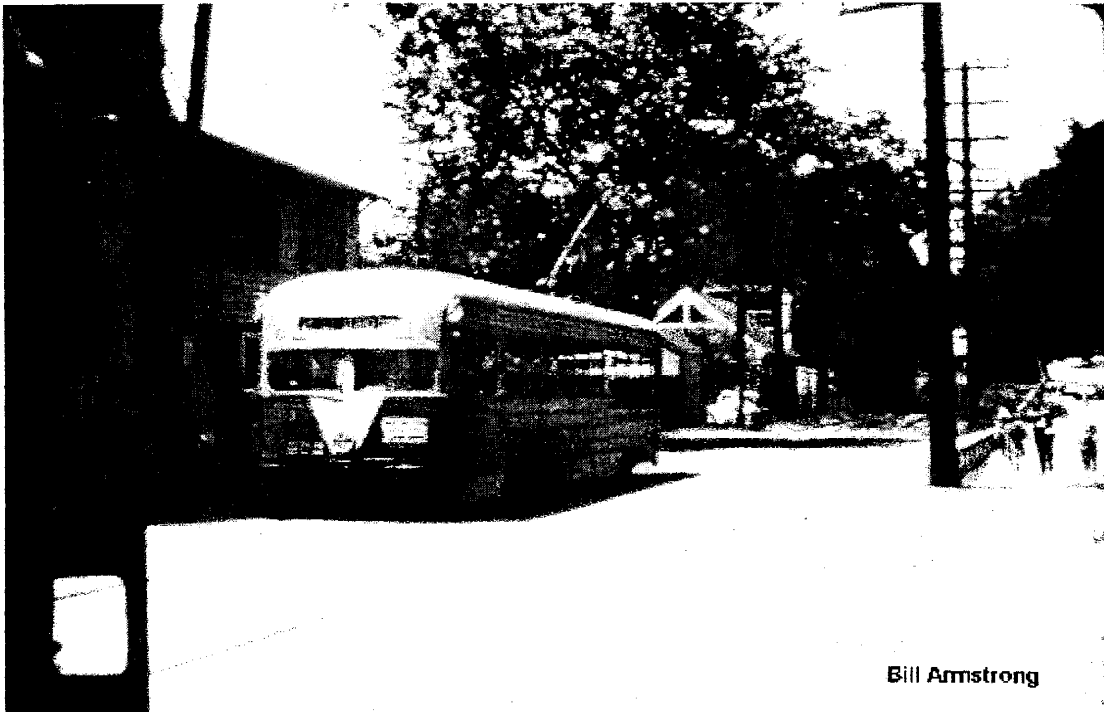


**Maryland Historical Trust  
Maryland Inventory of  
Historic Properties Form**

Inventory No. M: 35-155

Name  
**Continuation Sheet**

Number 9 Page 7



**Figure 16. A trolley car in front of Glen Echo amusement park, heading back towards Washington, D.C. The next stop will be the Sycamore Store and Sycamore Island.  
Photo by Bill Armstrong.**

**Maryland Historical Trust  
Maryland Inventory of  
Historic Properties Form**

Inventory No. M: 35-155

Name  
Continuation Sheet

Number 9 Page 8



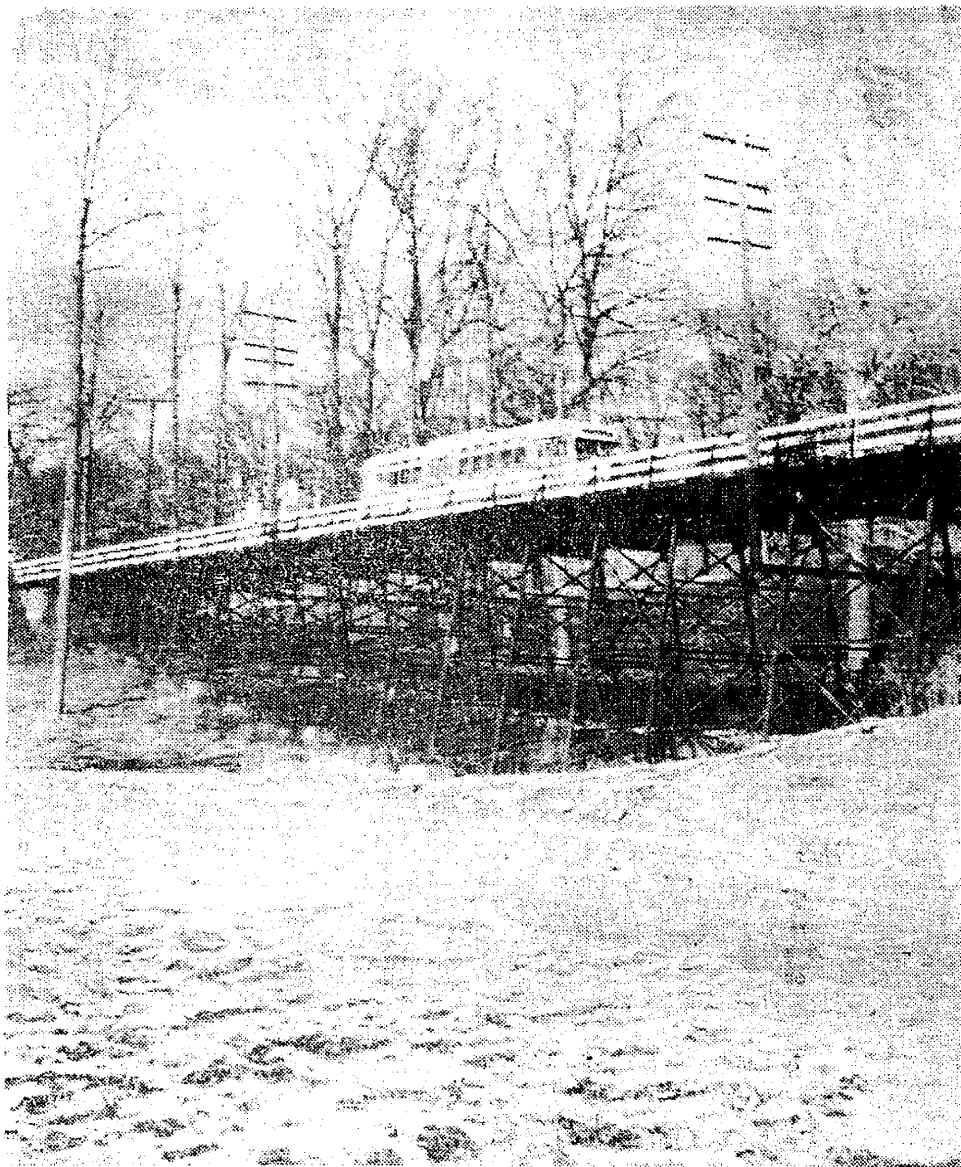
**Figure 17. The Washington and Glen Echo Trolley tracks turn a curve just before the Sycamore Trestle and the Sycamore Stop. The old trolley right of way, and this curve in particular, are easily visible from MacArthur Boulevard driving inbound from the Clara Barton Parkway exit towards the Sycamore Store. Note that "Conduit Road" in the foreground is still a deeply tracked dirt road. Photo; courtesy of Montgomery County Historical Society.**

# Maryland Historical Trust Maryland Inventory of Historic Properties Form

Inventory No. M: 35-155

Name  
Continuation Sheet

Number 9 Page 9



*Clickety-Clackety Sycamore Trestle Announced Trolley's Passing*

**Figure 18.** This picture was taken during the last week of the trolley's operation in January, 1961. The Sycamore Trestle bridged the outlet of the creek that runs through the ravine across from the Sycamore Store. The trestle still stands, although heavily rusted and its planking rotting away. *Photo; courtesy of Montgomery County Historical Society.*

**Maryland Historical Trust  
Maryland Inventory of  
Historic Properties Form**

Inventory No. M: 35-155

Name  
Continuation Sheet

Number 9 Page 10



**Figure 19. The Sycamore Store in the mid-1930's, prior to the raising of the roof and expansion to the rear. Note the small Cedar in the foreground, which is now an enormous tree. Also note that the side porch is not screened.**  
*Photo by Maya W. Wukusha, courtesy of the Rogers family.*