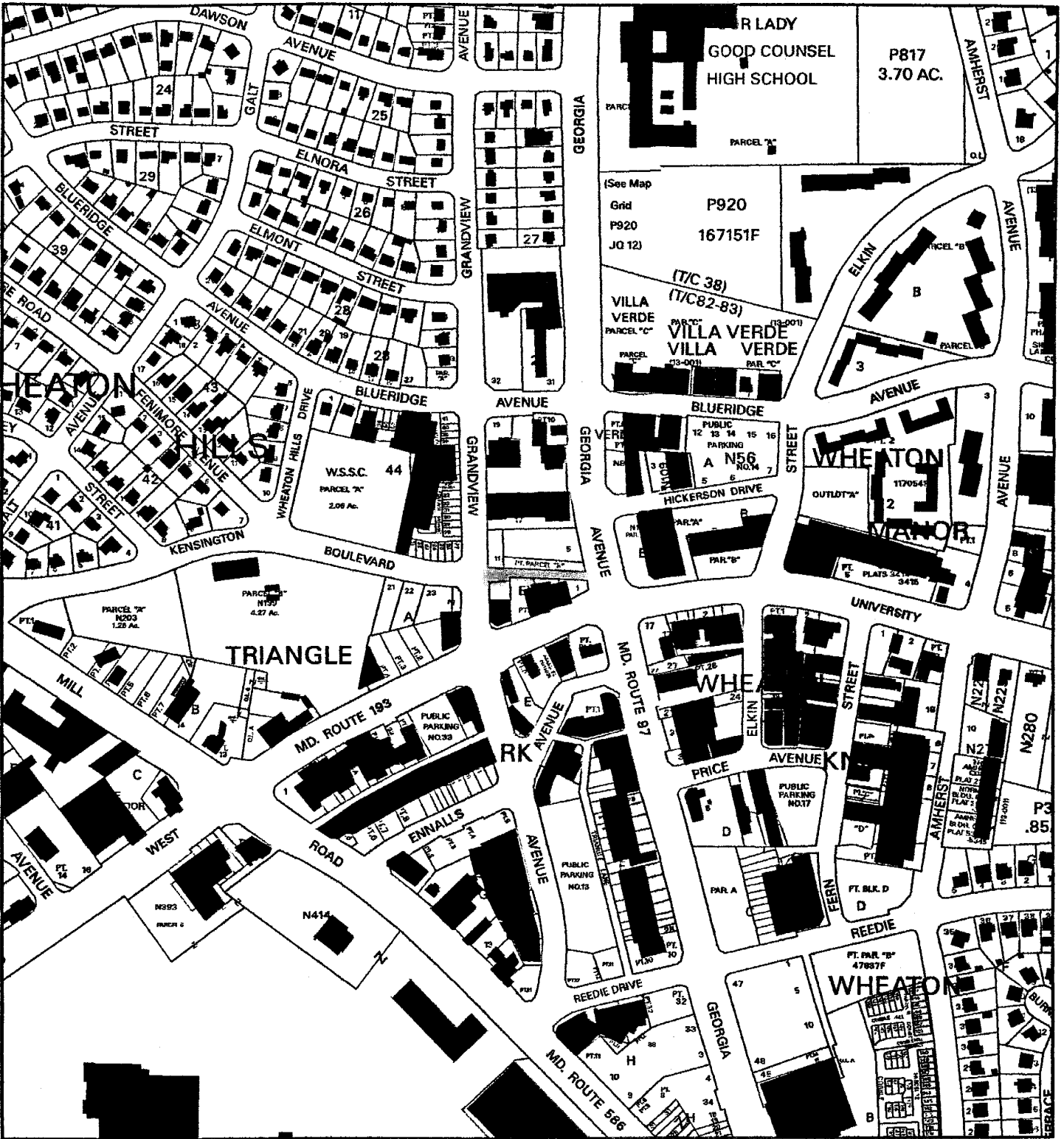


# KENSINGTON BLVD (AB 669)



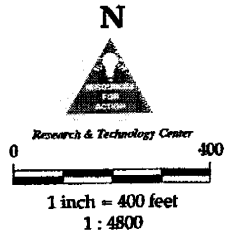
Map compiled on April 12, 2005 at 2:07 PM | Site located on base sheet no - 214NW03

## NOTICE

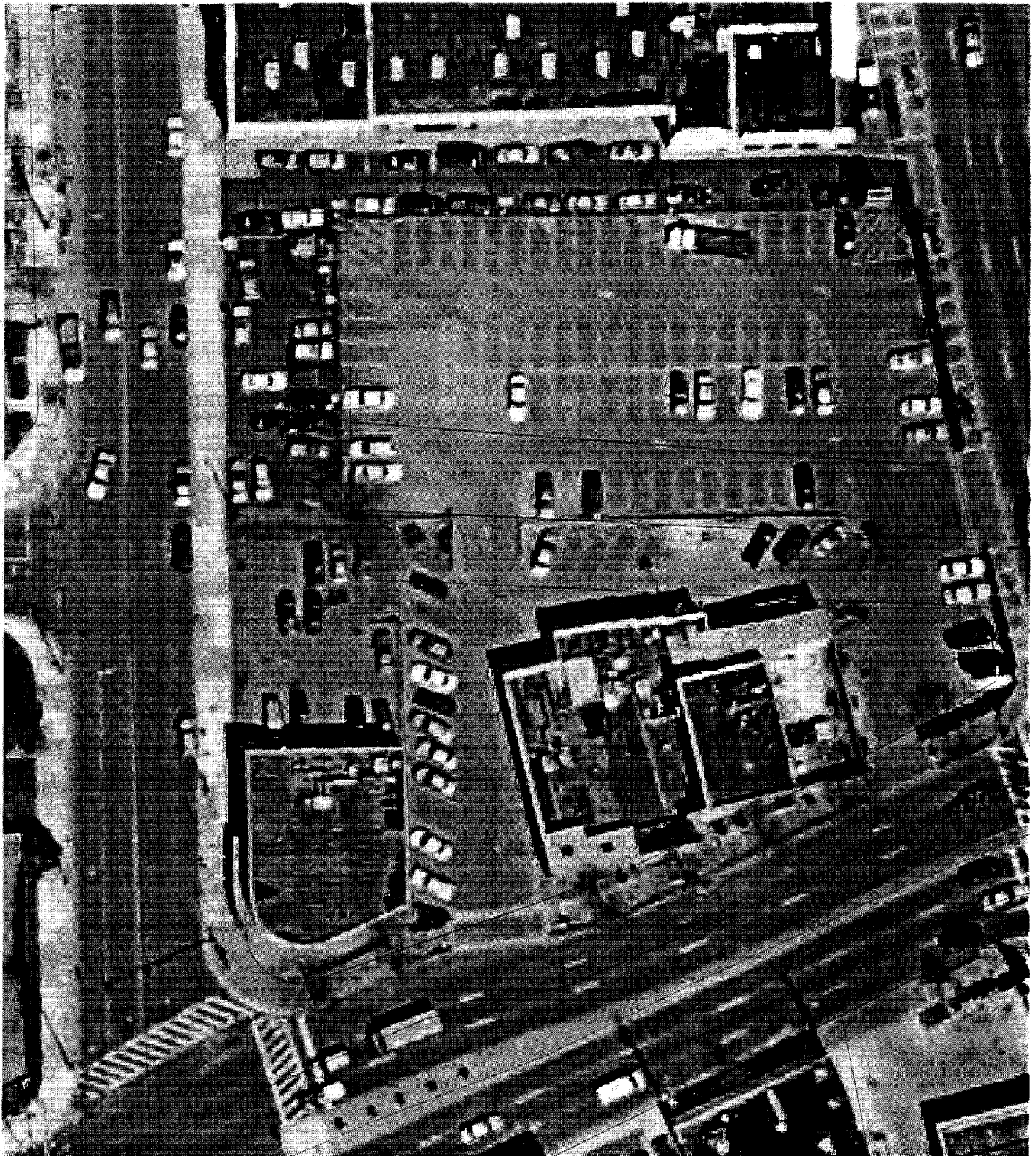
The planimetric, property, and topographic information shown on this map is based on copyrighted Map Products from the Montgomery County Department of Park and Planning of the Maryland-National Capital Park and Planning Commission, and may not be copied or reproduced without written permission from M-NCPPC.

Property lines are compiled by adjusting the property lines to topography created from aerial photography and should not be interpreted as actual field surveys. Planimetric features were compiled from 1:14,400 scale aerial photography using stereo photogrammetric methods.

This map is created from a variety of data sources, and may not reflect the most current conditions in any one location and may not be completely accurate or up to date. All map features are approximately within five feet of their true location. This map may not be the same as a map of the same area plotted at an earlier time as the data is continuously updated. Use of this map, other than for general planning purposes is not recommended. - Copyright 1998



**MONTGOMERY COUNTY DEPARTMENT OF PARK AND PLANNING**  
 THE MARYLAND-NATIONAL CAPITAL PARK AND PLANNING COMMISSION  
 8787 Georgia Avenue - Silver Spring, Maryland 20910-3760



Map Compiled On 03-23-2005 at 03:44 PM  
Map Scale: 1 inch = 50 feet or 1:600

0 50 Feet



The Maryland-National Capital Park and Planning Commission  
Montgomery County Department of Park and Planning  
Transportation Planning Unit  
8787 Georgia Avenue | Silver Spring, Maryland 20910  
301.495.4525 voice | 301.495.1302 fax | <http://www.mc-mncppc.org>

DPW/D 2800 Street Coordinates  
MCHD Planning Data Coordinates  
Montgomery County

**NOTICE**

The planimetric, property, and topographic information shown on this map is based on copyrighted Map Products from the Montgomery County Department of Park and Planning of the Maryland-National Capital Park and Planning Commission, and may not be copied or reproduced without written permission from M-NCPPC.

Property lines are compiled by adjusting the property lines to topography created from aerial photography and should not be interpreted as actual field surveys. Planimetric features were compiled from 1:14400 scale aerial photography using stereo photogrammetric methods. All planimetric and property-based features are collected at 1:2400 scale and are +/- 2.5 feet of their true location.

This map is created from a variety of data sources, and may not reflect the most current conditions in any one location and may not be completely accurate or up to date. This map may not be the same as a map of the same area plotted at an earlier time as the data are continuously updated. Use of this map, other than for general planning purposes, is not recommended. Copyright 2005.

