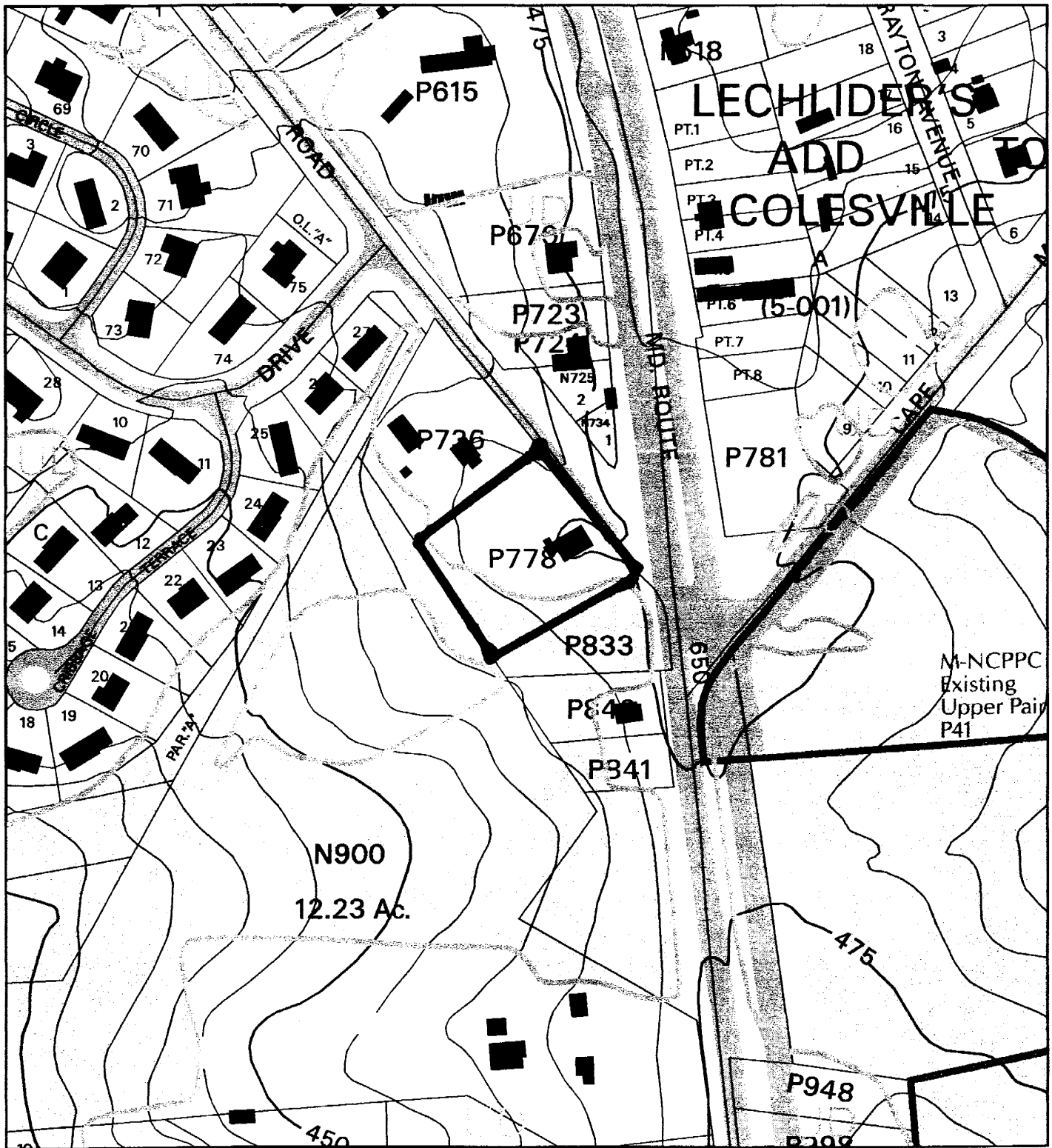


SNOWDEN MANOR (1-04086)



Map compiled on April 19, 2005 at 1:18 PM | Site located on base sheet no - 219NE01

NOTICE

The planimetric, property, and topographic information shown on this map is based on copyrighted Map Products from the Montgomery County Department of Park and Planning of the Maryland -National Capital Park and Planning Commission, and may not be copied or reproduced without written permission from M-NCPPC.

Property lines are compiled by adjusting the property lines to topography created from aerial photography and should not be interpreted as actual field surveys. Planimetric features were compiled from 1:14400 scale aerial photography using stereo photogrammetric methods.

This map is created from a variety of data sources, and may not reflect the most current conditions in any one location and may not be completely accurate or up to date. All map features are approximately within five feet of their true location. This map may not be the same as a map of the same area plotted at an earlier time as the data is continuously updated. Use of this map, other than for general planning purposes is not recommended. - Copyright 1998

Key Map



N



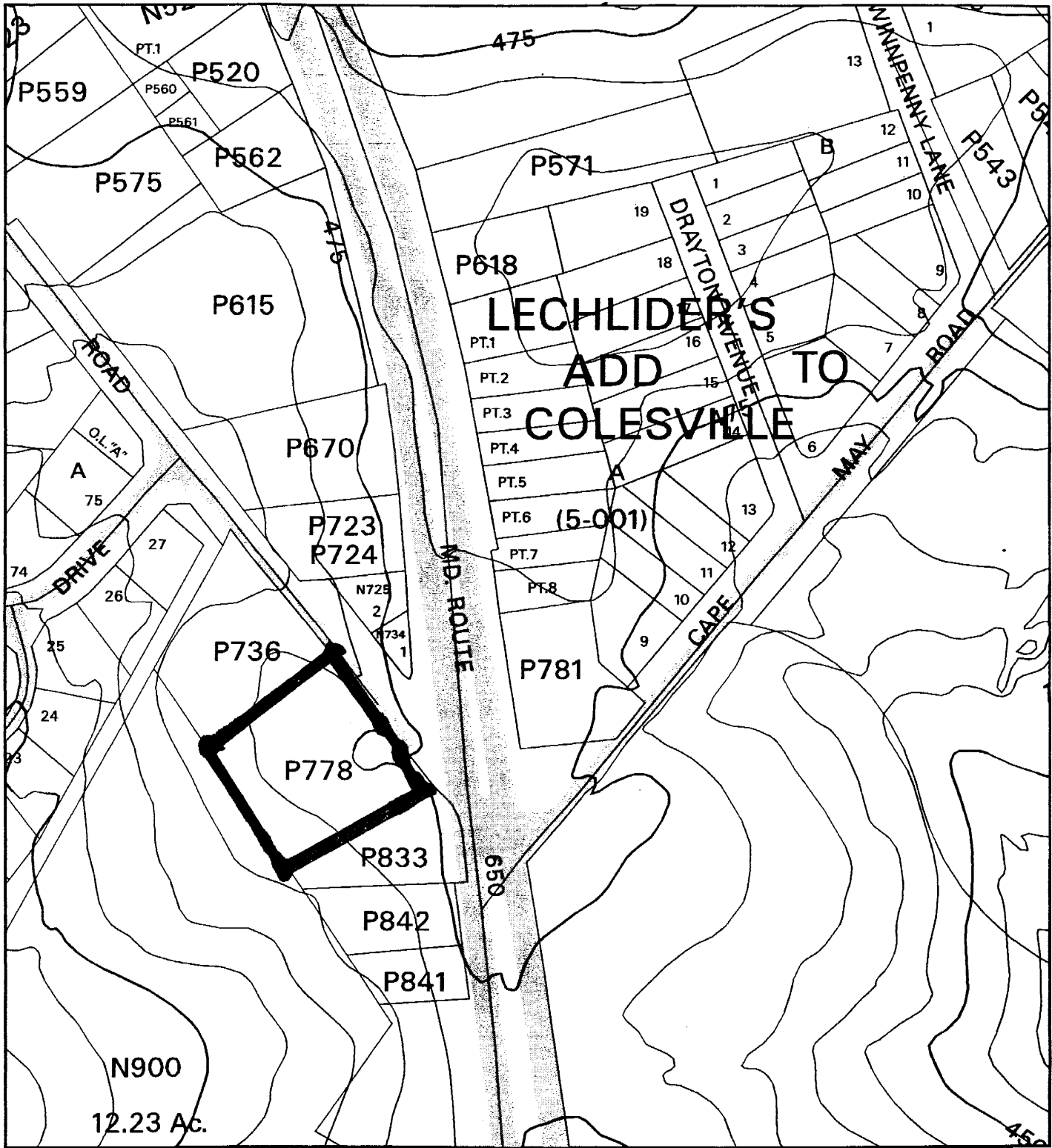
Research & Technology Center



1 inch = 200 feet

1 : 2400

SNOWDEN MANOR



Map compiled on April 19, 2005 at 1:06 PM | Site located on base sheet no - 219NE01

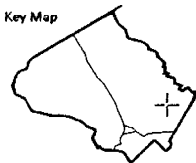
NOTICE

The planimetric, property, and topographic information shown on this map is based on copyrighted Map Products from the Montgomery County Department of Park and Planning of the Maryland -National Capital Park and Planning Commission, and may not be copied or reproduced without written permission from M-NCPPC.

Property lines are compiled by adjusting the property lines to topography created from aerial photography and should not be interpreted as actual field surveys. Planimetric features were compiled from 1:14400 scale aerial photography using stereo photogrammetric methods.

This map is created from a variety of data sources, and may not reflect the most current conditions in any one location and may not be completely accurate or up to date. All map features are approximately within five feet of their true location. This map may not be the same as a map of the same area plotted at an earlier time as the data is continuously updated. Use of this map, other than for general planning purposes is not recommended. - Copyright 1998

Key Map



N

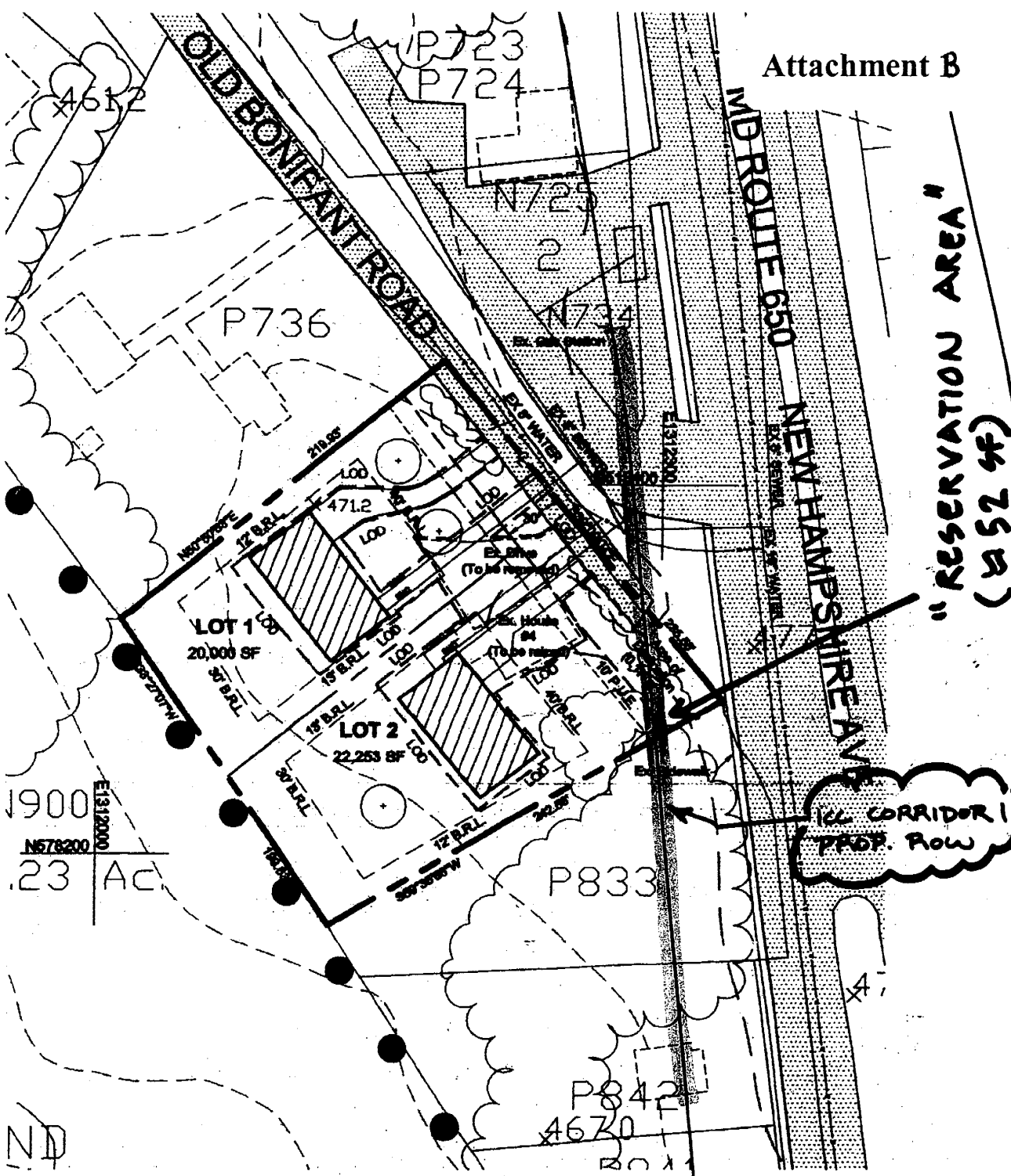


Research & Technology Center



1 inch = 200 feet
1 : 2400

MONTGOMERY COUNTY DEPARTMENT OF PARK AND PLANNING
THE MARYLAND-NATIONAL CAPITAL PARK AND PLANNING COMMISSION
8787 Georgia Avenue - Silver Spring, Maryland 20910-03760



Certificate:
 I certify that the boundary shown herein is correct to my
 best belief based upon existing records and views.

[Signature] 5/13/04
 Date



PRELIMINARY PLAN
Snowden Manor
 (4 Old Bonifant Road)
 Montgomery County, Maryland

