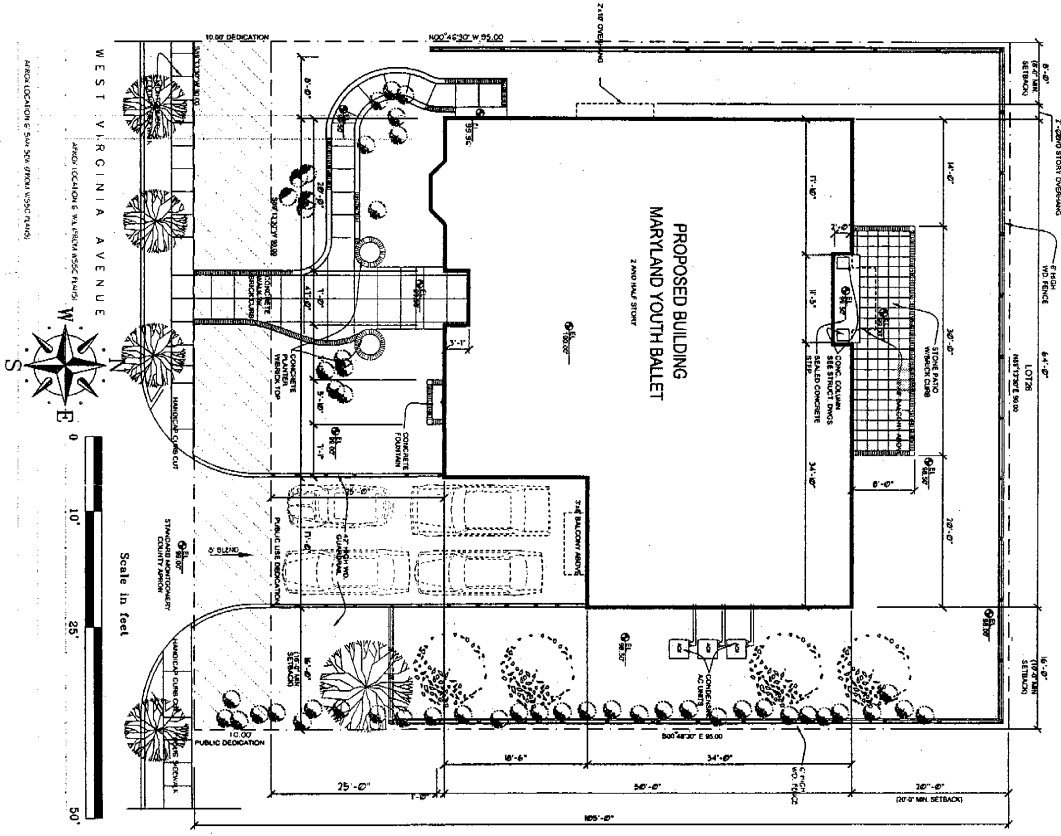
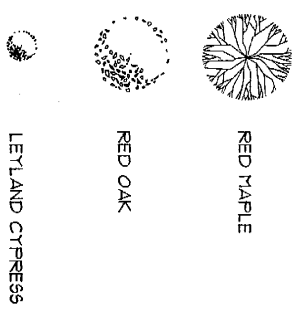


LANDSCAPE LEGEND



SITE PLAN
SCALE 1/16" = 1'-0"

INTERPLAN
Incorporated

5185 Montclair Boulevard, NW, Suite 200 Washington, DC 20016-5244
1.202.262.5500 1.202.266.9273 www.interplan.com

REFERENCE MONTGOMERY COUNTY CODE
CHAPTER 59, DIVISION 59-C.1.3

4705 WEST VIRGINIA AVENUE
BETHESDA, MARYLAND 20814

PROPERTY ZONE: R-60
RESULT/RECORD: PROPOSED

LOT AREA:	6,550 SQ. FT. (90' x 73' x 52' x 50')
LOT WIDTH:	60 feet min. 90 feet
LOT WIDTH @ STREET:	25 feet min. 90 feet
TOTAL LOT COVERAGE:	35%
SPRINKLE FROM ADJOINING LOTS:	25 feet FRONT: 6 feet SIDE: 1.6 feet REAR: 20 feet
MINIMUM DRIVEWAY SETBACK (EAST SIDE):	1.6 feet
MINIMUM BUILDING HEIGHT:	3.5 feet

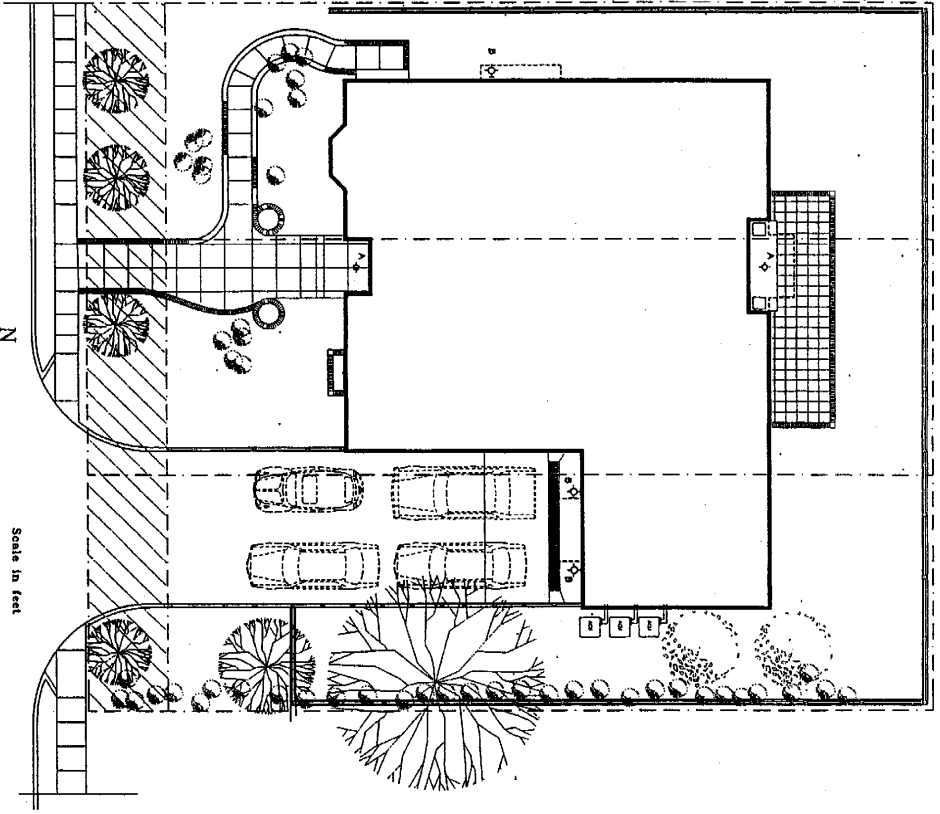
SITE PLAN
SCALE: 1/16" = 1'-0"

MAY 2, 2005
JOB # 02-2165

W
S
E
N

A-0

4705 WEST VIRGINIA AVENUE
LOT #26
BETHESDA, MARYLAND 20814
SPECIAL EXCEPTION SITE PLAN



LIGHT FIXTURE SCHEDULE

Fixture Type	Light Fixture Description	Lamping Requirements	Voltage Reqmts	Size	Mounting Height	Mfr	Location
A	OUTDOOR PENDANT 84044-11 ANTIQUE SHEPPARD SERIES BRONZE FINISH & SEEDED GLASS	Incandescent, 100 W max.	120 V	17 1/4" high x 10" wide SQUARE	Calling Mounted Pendant fixture See bidg. facade for exact location. Mounted 7'-6" to bottom of fixture	SEA GULL LIGHTING	Exterior Building Main Entrance
B	OUTDOOR WALL LANTERN 84042-11 ANTIQUE SHEPPARD SERIES BRONZE FINISH & SEEDED GLASS	Incandescent, 100 W max.	120 V	1 1/2" WIDE x 1 1/2" HIGH	7'-0" AFF to the bottom of the fixture. See bidg. facade for exact locations.	SEA GULL LIGHTING	Exterior Building over garage door and by the slide and back door

INTERPLAN
Incorporated

5185 MacArthur Boulevard, NW - Suite 200 Washington, DC 20015-3341
 1.202.362.5500 1.202.686.9273 www.interplan.com

REFERENCE MONTGOMERY COUNTY CODE
 CHAPTER 59, DIVISION 59-C-1.3

4707 WEST VIRGINIA AVENUE
 BETHESDA, MARYLAND 20814

ELECTRICAL SITE PLAN
 SCALE: 1/16" = 1'-0"

LIGHT FIXTURE SCHEDULE

FEB. 8, 2005

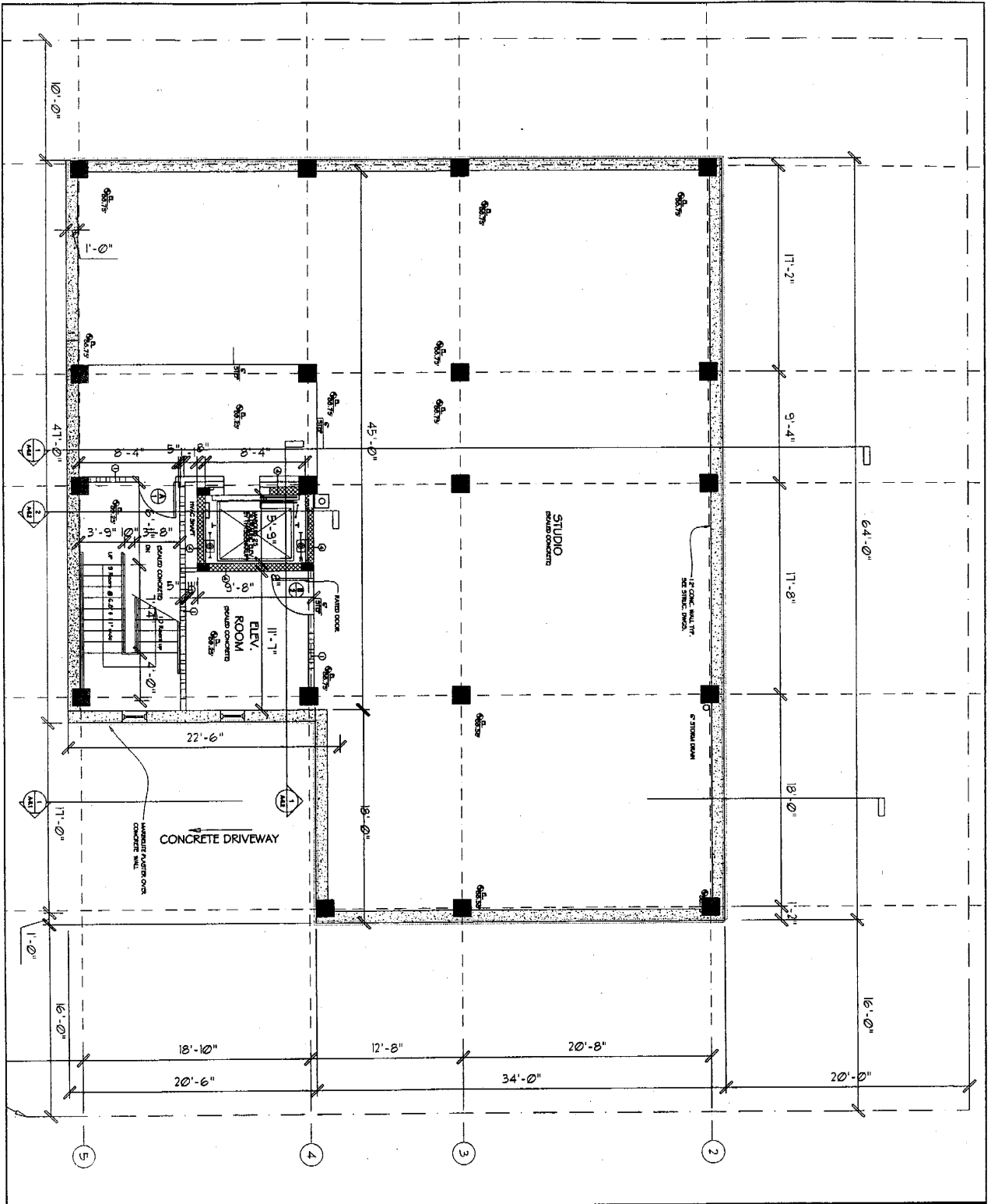
JOB # 02-2165

W
S
N
E

E-1

4707 WEST VIRGINIA AVENUE
 LOTS # 18, 19 AND 20
 BETHESDA, MARYLAND 20814

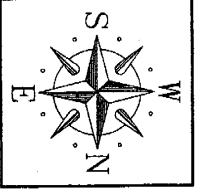
SPECIAL EXCEPTION Exhibit



INTERPLAN
Incorporated

5185 MacArthur Boulevard, N.W. - Suite 200 Washington, DC 20015-3341
L 202-382-5300 F 202-866-8273 www.interplaninc.com

BASEMENT
SCALE: 1/8" = 1'-0"



MAY 2, 2005
JOB # 02-2165
A-1

4705 WEST VIRGINIA AVENUE
LOTS #26
BETHESDA, MARYLAND 20814
SPECIAL EXCEPTION