

Item #7



THE MARYLAND-NATIONAL CAPITAL PARK AND PLANNING COMMISSION

M E M O R A N D U M

DATE: May 13, 2005

TO: Montgomery County Planning Board

FROM: Catherine Conlon
Development Review Division
(301) 495-4542

SUBJECT: Informational Maps for Subdivision Items on the
Planning Board's Agenda for May 19, 2005.

Attached are copies of plan drawings for item #07, #08, #09, #10 and #11. These subdivision items are scheduled for Planning Board consideration on May 19, 2005. The items are further identified as follows:

Agenda Item #07 - Preliminary Plan 1-05010
Potomac Manors

Agenda Item #08 - Pre-Preliminary Plan 7-05053
Qureshi Property

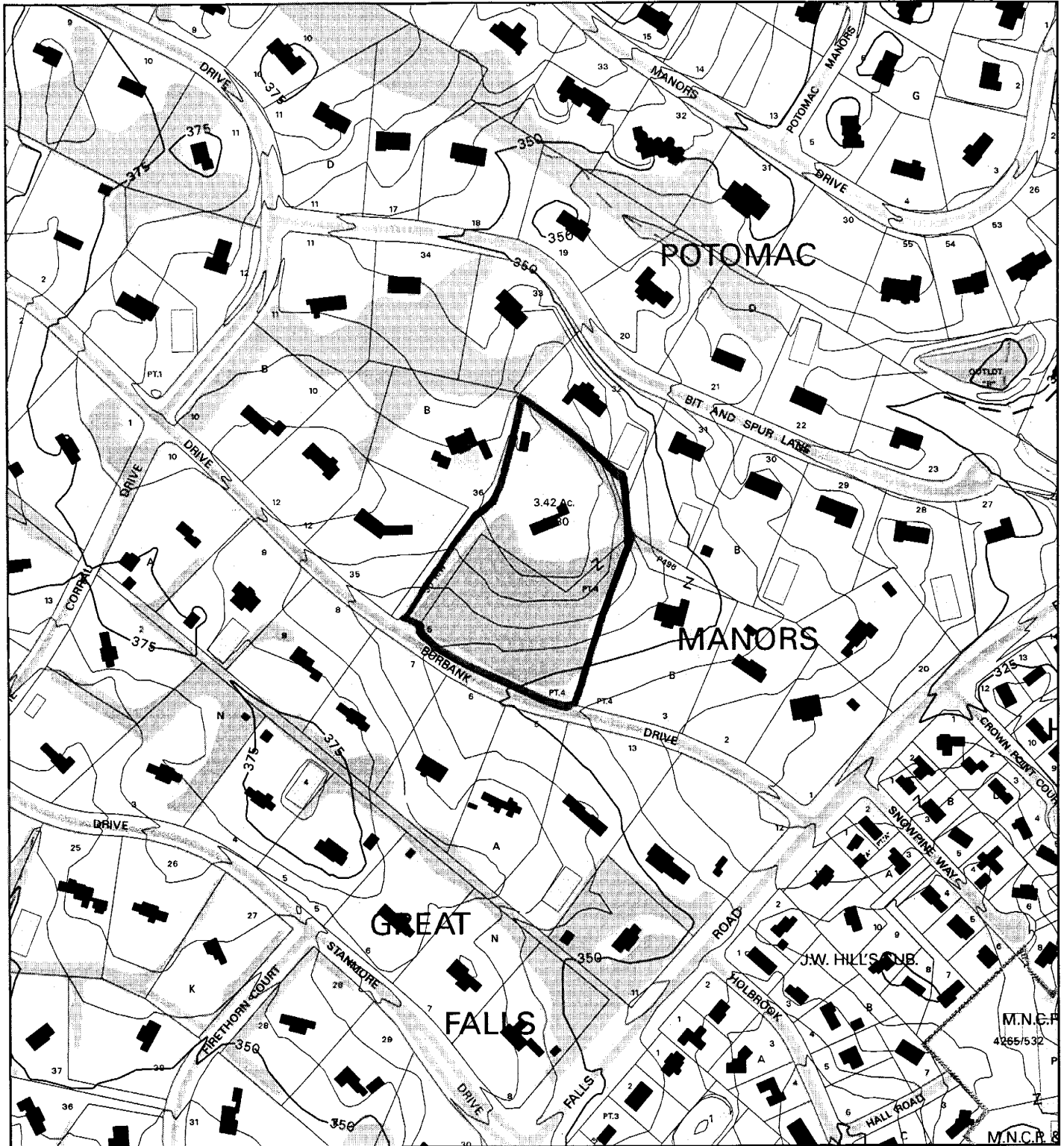
Agenda Item #09 - Preliminary Plan 1-05075
Alta Vista

Agenda Item #10 - Pre-Preliminary Plan 7-05016
White Ground Bridge

Agenda Item #11 - Preliminary Plan 1-03090
Yingers Addition to Woodfield

Attachment

POTOMAC MANORS (1-05010)



Map compiled on August 02, 2004 at 11:02 AM | Site located on base sheet no - 212NW10

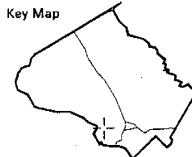
NOTICE

The planimetric, property, and topographic information shown on this map is based on copyrighted Map Products from the Montgomery County Department of Park and Planning of the Maryland-National Capital Park and Planning Commission, and may not be copied or reproduced without written permission from M-NCPPC.

Property lines are compiled by adjusting the property lines to topography created from aerial photography and should not be interpreted as actual field surveys. Planimetric features were compiled from 1:14400 scale aerial photography using stereo photogrammetric methods.

This map is created from a variety of data sources, and may not reflect the most current conditions in any one location and may not be completely accurate or up to date. All map features are approximately within five feet of their true location. This map may not be the same as a map of the same area plotted at an earlier time as the data is continuously updated. Use of this map, other than for general planning purposes is not recommended. - Copyright 1998

Key Map



N



Research & Technology Center

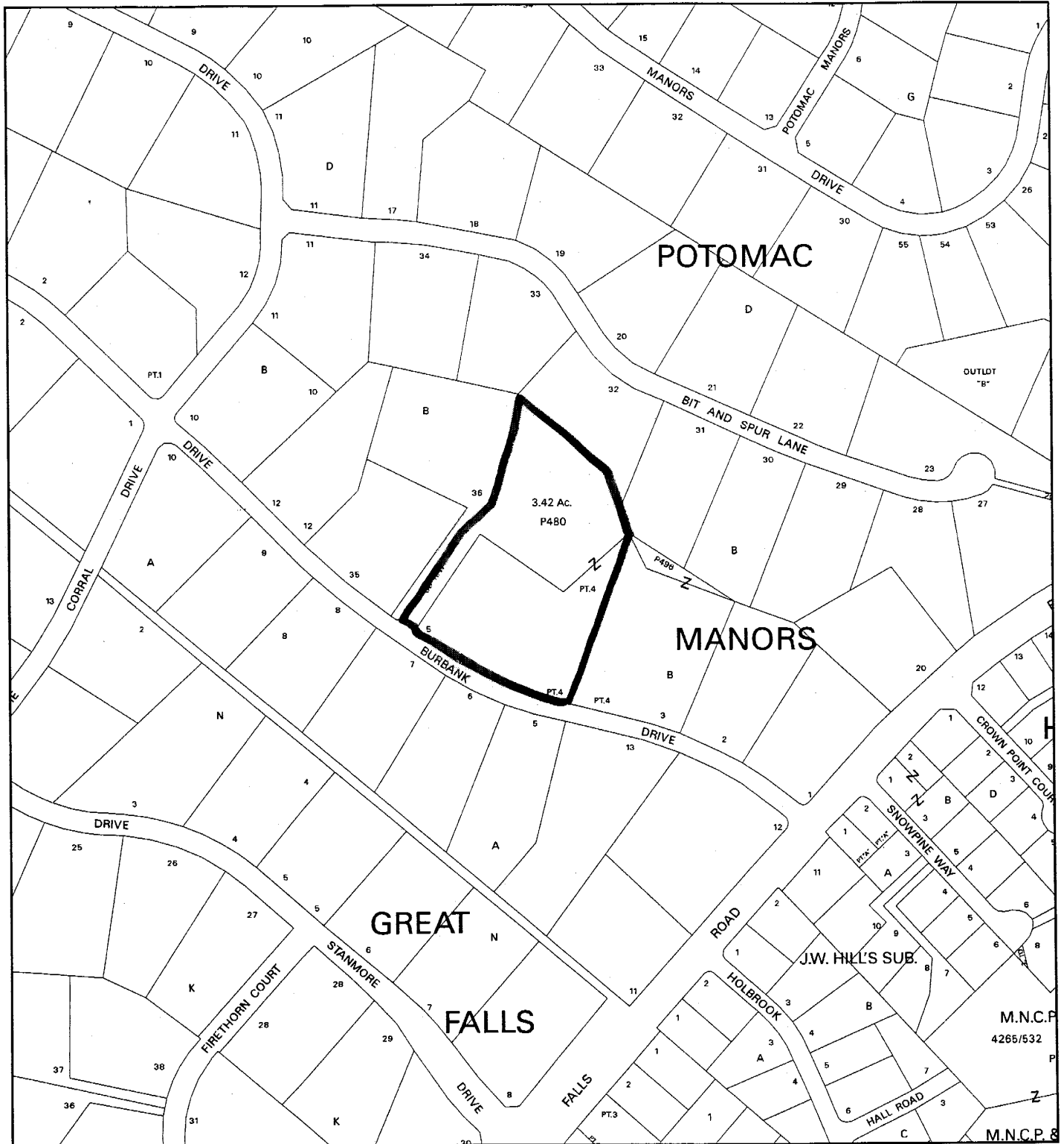


1 inch = 400 feet
1 : 4800

MONTGOMERY COUNTY DEPARTMENT OF PARK AND PLANNING
THE MARYLAND-NATIONAL CAPITAL PARK AND PLANNING COMMISSION
8787 Georgia Avenue - Silver Spring, Maryland 20910-3760

M-NCPPC

POTOMAC MANORS (1-05010)



Map compiled on August 02, 2004 at 11:07 AM | Site located on base sheet no - 212NW10

NOTICE

The planimetric, property, and topographic information shown on this map is based on copyrighted Map Products from the Montgomery County Department of Park and Planning of the Maryland -National Capital Park and Planning Commission, and may not be copied or reproduced without written permission from M-NCPPC.

Property lines are compiled by adjusting the property lines to topography created from aerial photography and should not be interpreted as actual field surveys. Planimetric features were compiled from 1:14400 scale aerial photography using stereo photogrammetric methods.

This map is created from a variety of data sources, and may not reflect the most current conditions in any one location and may not be completely accurate or up to date. All map features are approximately within five feet of their true location. This map may not be the same as a map of the same area plotted at an earlier time as the data is continuously updated. Use of this map, other than for general planning purposes is not recommended. - Copyright 1998

Key Map



N



Research & Technology Center



1 inch = 400 feet
1 : 4800

MONTGOMERY COUNTY DEPARTMENT OF PARK AND PLANNING
THE MARYLAND-NATIONAL CAPITAL PARK AND PLANNING COMMISSION

8787 Georgia Avenue - Silver Spring, Maryland 20910-3760

