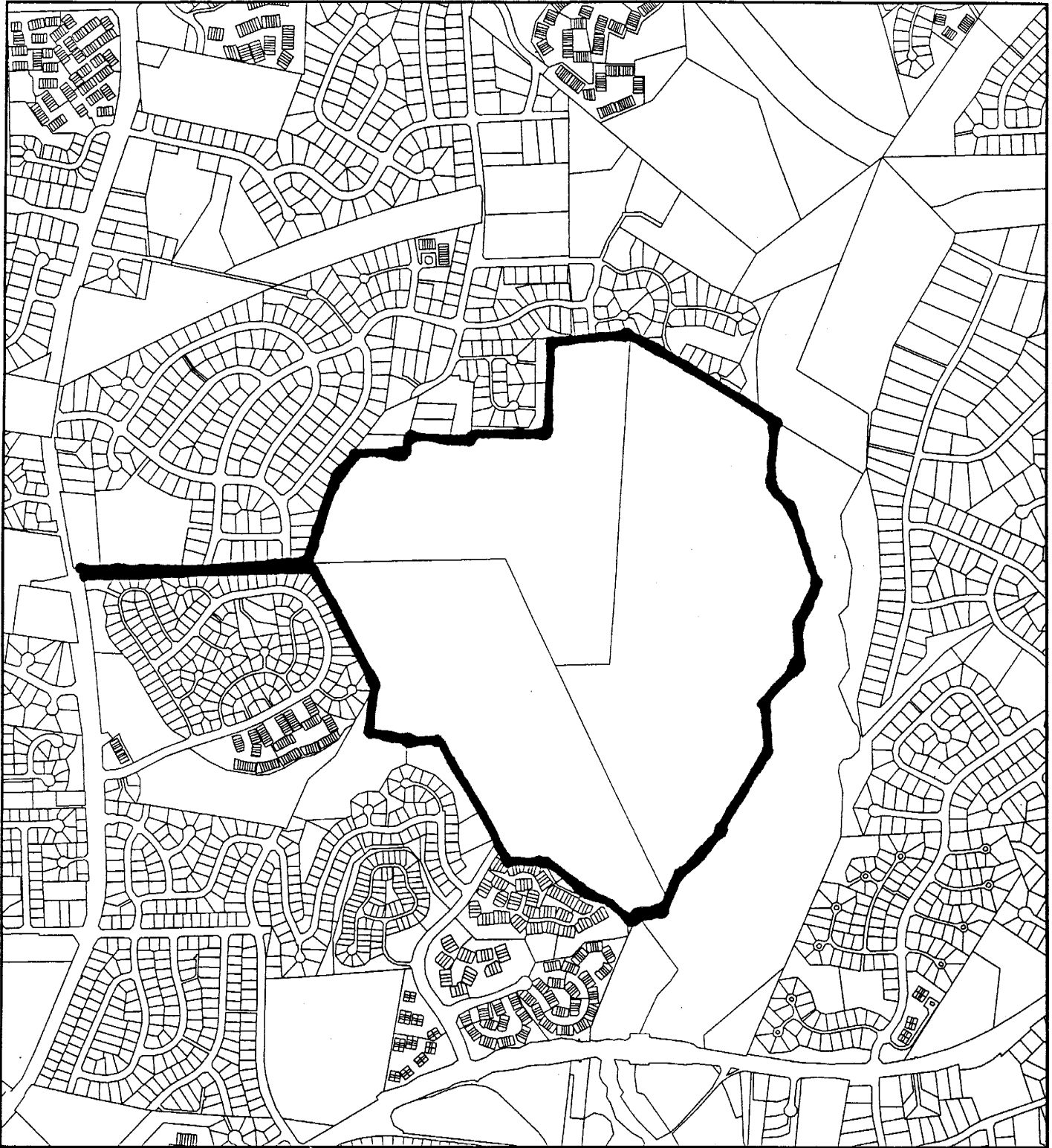


INDIAN SPRING PROPERTY (1-04108)



Map compiled on February 25, 2005 at 9:57 AM | Site located on base sheet no - 218NW02

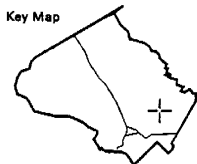
NOTICE

The planimetric, property, and topographic information shown on this map is based on copyrighted Map Products from the Montgomery County Department of Park and Planning of the Maryland -National Capital Park and Planning Commission, and may not be copied or reproduced without written permission from M-NCPPC.

Property lines are compiled by adjusting the property lines to topography created from aerial photography and should not be interpreted as actual field surveys. Planimetric features were compiled from 1:14400 scale aerial photography using stereo photogrammetric methods.

This map is created from a variety of data sources, and may not reflect the most current conditions in any one location and may not be completely accurate or up to date. All map features are approximately within five feet of their true location. This map may not be the same as a map of the same area plotted at an earlier time as the data is continuously updated. Use of this map, other than for general planning purposes is not recommended. - Copyright 1998

Key Map



Research & Technology Center



1 inch = 1200 feet
1 : 14400

INDIAN SPRING PROPERTY (1-04108)



Map compiled on February 25, 2005 at 9:58 AM | Site located on base sheet no - 218NW02

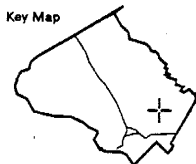
NOTICE

The planimetric, property, and topographic information shown on this map is based on copyrighted Map Products from the Montgomery County Department of Park and Planning of the Maryland-National Capital Park and Planning Commission, and may not be copied or reproduced without written permission from M-NCPPC.

Property lines are compiled by adjusting the property lines to topography created from aerial photography and should not be interpreted as actual field surveys. Planimetric features were compiled from 1:14400 scale aerial photography using stereo photogrammetric methods.

This map is created from a variety of data sources, and may not reflect the most current conditions in any one location and may not be completely accurate or up to date. All map features are approximately within five feet of their true location. This map may not be the same as a map of the same area plotted at an earlier time as the data is continuously updated. Use of this map, other than for general planning purposes is not recommended. - Copyright 1998

Key Map



Research & Technology Center



1 inch = 1200 feet
1:14400



- LEGEND**
- PROPERTY LINE
 - SAND FILTER BASIN (SFB)
 - NEW DRY POND (NDP)
 - STREAM RESTORATION (SR)
 - FORESTED WETLAND / AFFORESTATION (FW)
 - AFFORESTATION (A)
 - EXISTING FOREST (EF)
 - WETLAND MARSH (WM)

ENVIRONMENTAL EXHIBIT
INDIAN SPRING

Montgomery County, Maryland
 Not to Scale February 25, 2005

Environmental Services
 2005