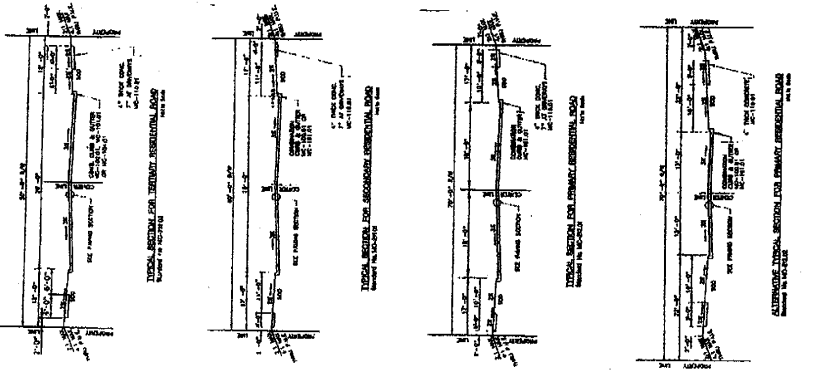
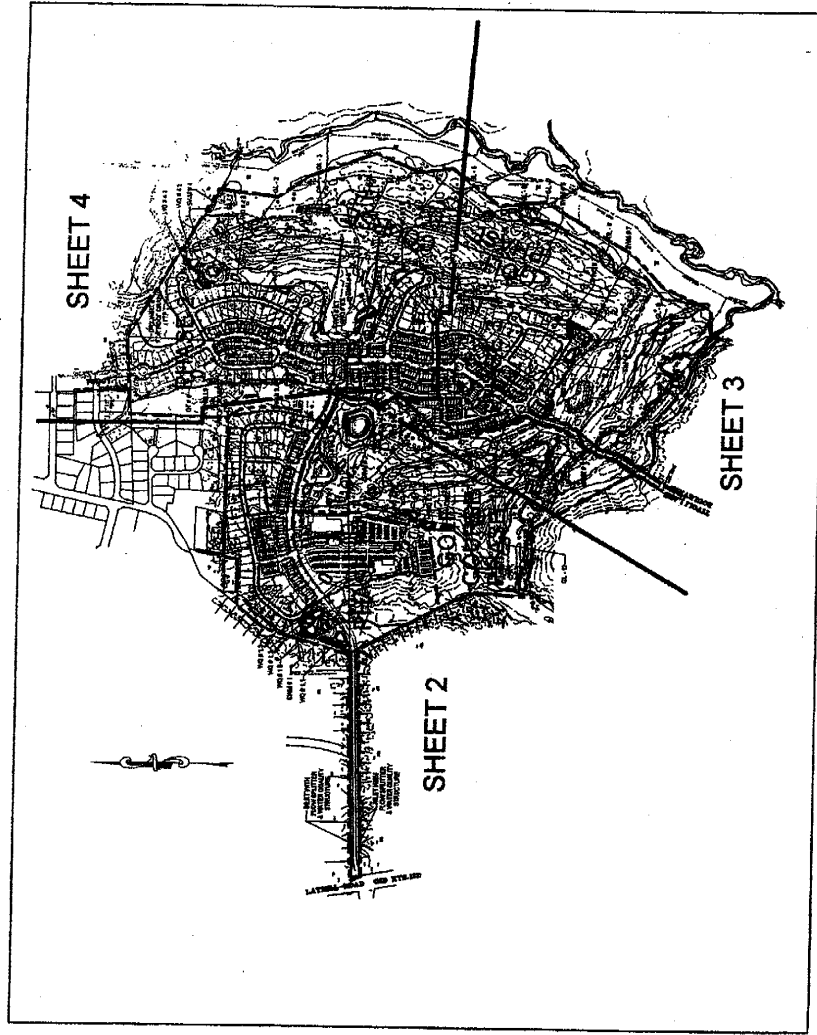
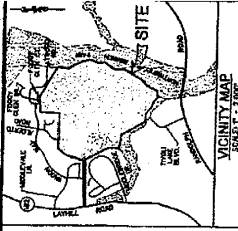


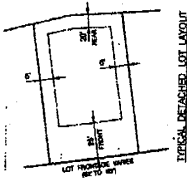
INDIAN SPRING PROPERTY PRELIMINARY PLAN

WHEATON (13TH) ELECTION DISTRICT
MONTGOMERY COUNTY, MARYLAND



GENERAL NOTES AND SITE DATA

1. Gross Tract Area - 308.38 Acres
2. Zoning - R-200 (297.98 Acre) and R-30 (10.40 Acre)
3. Maximum Depth Permitted by Zoning (with 100' setback) - 2.14' (R-200) and 4.38' (R-30)
4. Maximum Number of Dwelling Units Permitted - 773
5. Number of Units Proposed - 220 of maximum density
6. Number of Single-Family Attached - 220
7. Proposed Density - 71 units per acre
8. Minimum Lot Area Proposed - 338 sq. ft. (28% of total)
9. Minimum Lot Area Proposed by 2008 Ord. - 1,300 sq. ft.
10. Floor Area Maximum - 1,300 sq. ft.
11. Floor Area Maximum - 1,300 sq. ft.
12. Property is located in the Northwest Branch watershed (Use 17 watershed).
13. Existing topography by A/E Surveys - 2' contour interval.
14. Boundary information from available deed information.
15. 100-Year Floodplain delineation by LSA, dated September 2003.
16. There are no designated historic sites associated with the property.
17. Existing Water & Sewer Service Categories W1/31.
18. The proposed lot locations, shows, dimensions and site are shown on the record plan.



Attachment E

ENGINEER'S CERTIFICATE

I, the undersigned, being a duly Licensed Professional Engineer in the State of Maryland, do hereby certify that the above described plan was prepared by me or under my direct supervision and that I am a duly Licensed Professional Engineer in the State of Maryland.

DATE: _____
 ENGINEER'S NAME: CAROL E. GIBBIA, P.E.
 NO. REG. IN: 4385

APPLICANT:
WINCHESTER HOMES, INC.
 6806 ROCKLEDGE DRIVE, SUITE 800
 BETHESDA, MD 20817
 ATTN: MIKE LEMON



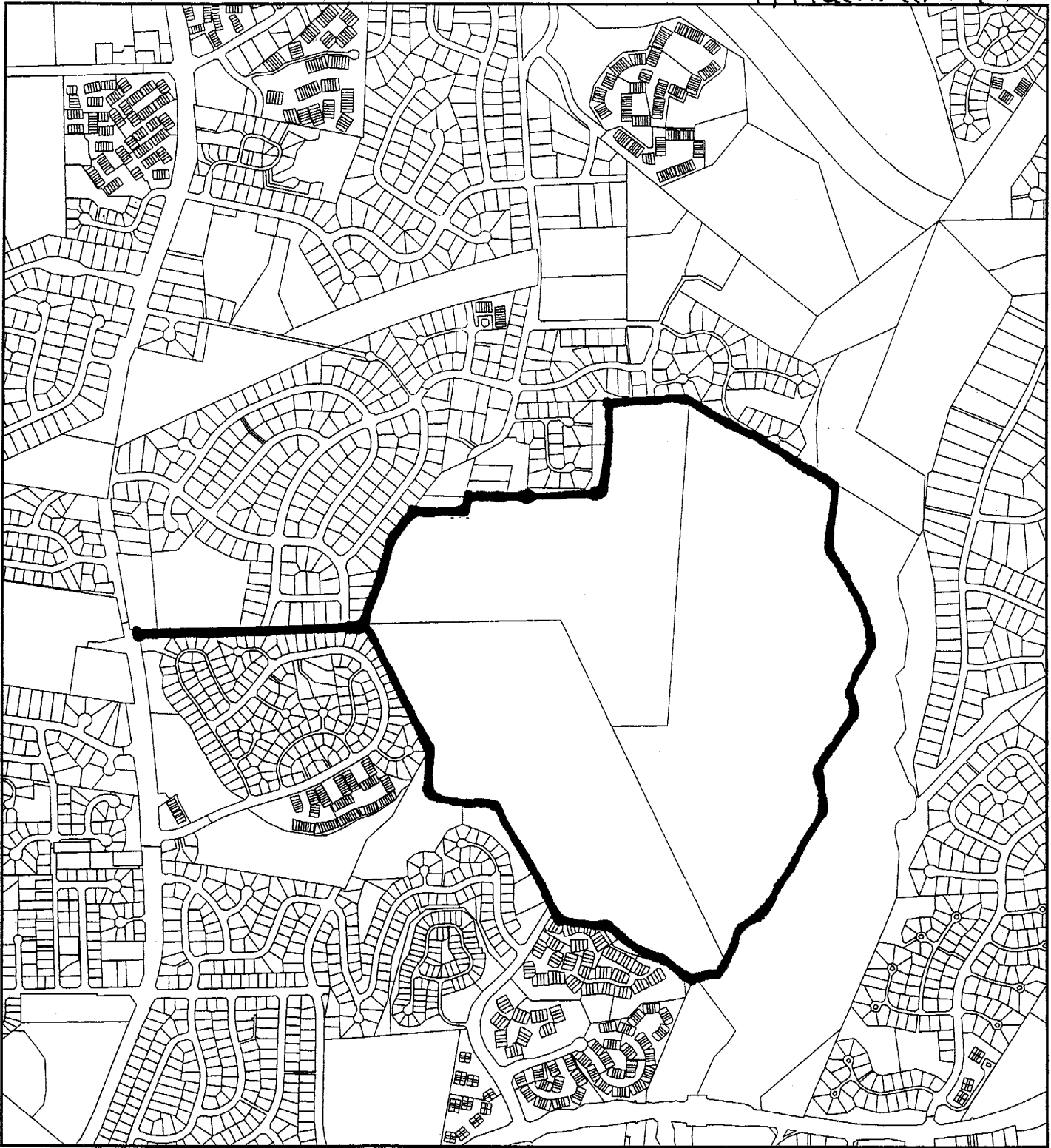
Arch. Eng. & Architects, Ltd.
 Civil/Struct. Architects
 1100 Rockville Pike
 Rockville, MD 20854

SITE SOLUTIONS, INC.
 1938 CLIP WORTH LANE, SUITE 95
 ROCKVILLE, MARYLAND 20850
 TEL: 301-441-8888
 FAX: 301-441-8888

PRELIMINARY PLAN		INDIAN SPRING PROPERTY	
WHEATON (13TH) ELECTION DISTRICT		MONTGOMERY COUNTY, MARYLAND	
COVER SHEET		DATE: 11/11/03	
SCALE: 1" = 400'		DRAWN BY: [Name]	
PROJECT NO.:		SHEET NO. 1 OF 1	
DATE: 11/11/03		BY: [Name]	
CHECKED BY: [Name]		APPROVED BY: [Name]	
PROJECT LOCATION:		PROJECT NO.:	
SHEET NO.:		DATE: 11/11/03	
DRAWN BY:		SCALE: 1" = 400'	
CHECKED BY:		PROJECT NO.:	
APPROVED BY:		DATE: 11/11/03	
PROJECT LOCATION:		PROJECT NO.:	
SHEET NO.:		DATE: 11/11/03	
DRAWN BY:		SCALE: 1" = 400'	
CHECKED BY:		PROJECT NO.:	
APPROVED BY:		DATE: 11/11/03	
PROJECT LOCATION:		PROJECT NO.:	
SHEET NO.:		DATE: 11/11/03	
DRAWN BY:		SCALE: 1" = 400'	
CHECKED BY:		PROJECT NO.:	
APPROVED BY:		DATE: 11/11/03	
PROJECT LOCATION:		PROJECT NO.:	
SHEET NO.:		DATE: 11/11/03	
DRAWN BY:		SCALE: 1" = 400'	
CHECKED BY:		PROJECT NO.:	
APPROVED BY:		DATE: 11/11/03	
PROJECT LOCATION:		PROJECT NO.:	
SHEET NO.:		DATE: 11/11/03	
DRAWN BY:		SCALE: 1" = 400'	
CHECKED BY:		PROJECT NO.:	
APPROVED BY:		DATE: 11/11/03	
PROJECT LOCATION:		PROJECT NO.:	
SHEET NO.:		DATE: 11/11/03	
DRAWN BY:		SCALE: 1" = 400'	
CHECKED BY:		PROJECT NO.:	
APPROVED BY:		DATE: 11/11/03	
PROJECT LOCATION:		PROJECT NO.:	
SHEET NO.:		DATE: 11/11/03	
DRAWN BY:		SCALE: 1" = 400'	
CHECKED BY:		PROJECT NO.:	
APPROVED BY:		DATE: 11/11/03	
PROJECT LOCATION:		PROJECT NO.:	
SHEET NO.:		DATE: 11/11/03	
DRAWN BY:		SCALE: 1" = 400'	
CHECKED BY:		PROJECT NO.:	
APPROVED BY:		DATE: 11/11/03	
PROJECT LOCATION:		PROJECT NO.:	
SHEET NO.:		DATE: 11/11/03	
DRAWN BY:		SCALE: 1" = 400'	
CHECKED BY:		PROJECT NO.:	
APPROVED BY:		DATE: 11/11/03	
PROJECT LOCATION:		PROJECT NO.:	
SHEET NO.:		DATE: 11/11/03	
DRAWN BY:		SCALE: 1" = 400'	
CHECKED BY:		PROJECT NO.:	
APPROVED BY:		DATE: 11/11/03	
PROJECT LOCATION:		PROJECT NO.:	
SHEET NO.:		DATE: 11/11/03	
DRAWN BY:		SCALE: 1" = 400'	
CHECKED BY:		PROJECT NO.:	
APPROVED BY:		DATE: 11/11/03	
PROJECT LOCATION:		PROJECT NO.:	
SHEET NO.:		DATE: 11/11/03	
DRAWN BY:		SCALE: 1" = 400'	
CHECKED BY:		PROJECT NO.:	
APPROVED BY:		DATE: 11/11/03	
PROJECT LOCATION:		PROJECT NO.:	
SHEET NO.:		DATE: 11/11/03	
DRAWN BY:		SCALE: 1" = 400'	
CHECKED BY:		PROJECT NO.:	
APPROVED BY:		DATE: 11/11/03	
PROJECT LOCATION:		PROJECT NO.:	
SHEET NO.:		DATE: 11/11/03	
DRAWN BY:		SCALE: 1" = 400'	
CHECKED BY:		PROJECT NO.:	
APPROVED BY:		DATE: 11/11/03	
PROJECT LOCATION:		PROJECT NO.:	
SHEET NO.:		DATE: 11/11/03	
DRAWN BY:		SCALE: 1" = 400'	
CHECKED BY:		PROJECT NO.:	
APPROVED BY:		DATE: 11/11/03	
PROJECT LOCATION:		PROJECT NO.:	
SHEET NO.:		DATE: 11/11/03	
DRAWN BY:		SCALE: 1" = 400'	
CHECKED BY:		PROJECT NO.:	
APPROVED BY:		DATE: 11/11/03	
PROJECT LOCATION:		PROJECT NO.:	
SHEET NO.:		DATE: 11/11/03	
DRAWN BY:		SCALE: 1" = 400'	
CHECKED BY:		PROJECT NO.:	
APPROVED BY:		DATE: 11/11/03	
PROJECT LOCATION:		PROJECT NO.:	
SHEET NO.:		DATE: 11/11/03	
DRAWN BY:		SCALE: 1" = 400'	
CHECKED BY:		PROJECT NO.:	
APPROVED BY:		DATE: 11/11/03	
PROJECT LOCATION:		PROJECT NO.:	
SHEET NO.:		DATE: 11/11/03	
DRAWN BY:		SCALE: 1" = 400'	
CHECKED BY:		PROJECT NO.:	
APPROVED BY:		DATE: 11/11/03	
PROJECT LOCATION:		PROJECT NO.:	
SHEET NO.:		DATE: 11/11/03	
DRAWN BY:		SCALE: 1" = 400'	
CHECKED BY:		PROJECT NO.:	
APPROVED BY:		DATE: 11/11/03	
PROJECT LOCATION:		PROJECT NO.:	
SHEET NO.:		DATE: 11/11/03	
DRAWN BY:		SCALE: 1" = 400'	
CHECKED BY:		PROJECT NO.:	
APPROVED BY:		DATE: 11/11/03	
PROJECT LOCATION:		PROJECT NO.:	
SHEET NO.:		DATE: 11/11/03	
DRAWN BY:		SCALE: 1" = 400'	
CHECKED BY:		PROJECT NO.:	
APPROVED BY:		DATE: 11/11/03	
PROJECT LOCATION:		PROJECT NO.:	
SHEET NO.:		DATE: 11/11/03	
DRAWN BY:		SCALE: 1" = 400'	
CHECKED BY:		PROJECT NO.:	
APPROVED BY:		DATE: 11/11/03	
PROJECT LOCATION:		PROJECT NO.:	
SHEET NO.:		DATE: 11/11/03	
DRAWN BY:		SCALE: 1" = 400'	
CHECKED BY:		PROJECT NO.:	
APPROVED BY:		DATE: 11/11/03	
PROJECT LOCATION:		PROJECT NO.:	
SHEET NO.:		DATE: 11/11/03	
DRAWN BY:		SCALE: 1" = 400'	
CHECKED BY:		PROJECT NO.:	
APPROVED BY:		DATE: 11/11/03	
PROJECT LOCATION:		PROJECT NO.:	
SHEET NO.:		DATE: 11/11/03	
DRAWN BY:		SCALE: 1" = 400'	
CHECKED BY:		PROJECT NO.:	
APPROVED BY:		DATE: 11/11/03	
PROJECT LOCATION:		PROJECT NO.:	
SHEET NO.:		DATE: 11/11/03	
DRAWN BY:		SCALE: 1" = 400'	
CHECKED BY:		PROJECT NO.:	
APPROVED BY:		DATE: 11/11/03	
PROJECT LOCATION:		PROJECT NO.:	
SHEET NO.:		DATE: 11/11/03	
DRAWN BY:		SCALE: 1" = 400'	
CHECKED BY:		PROJECT NO.:	
APPROVED BY:		DATE: 11/11/03	
PROJECT LOCATION:		PROJECT NO.:	
SHEET NO.:		DATE: 11/11/03	
DRAWN BY:		SCALE: 1" = 400'	
CHECKED BY:		PROJECT NO.:	
APPROVED BY:		DATE: 11/11/03	
PROJECT LOCATION:		PROJECT NO.:	
SHEET NO.:		DATE: 11/11/03	
DRAWN BY:		SCALE: 1" = 400'	
CHECKED BY:		PROJECT NO.:	
APPROVED BY:		DATE: 11/11/03	
PROJECT LOCATION:		PROJECT NO.:	
SHEET NO.:		DATE: 11/11/03	
DRAWN BY:		SCALE: 1" = 400'	
CHECKED BY:		PROJECT NO.:	
APPROVED BY:		DATE: 11/11/03	
PROJECT LOCATION:		PROJECT NO.:	
SHEET NO.:		DATE: 11/11/03	
DRAWN BY:		SCALE: 1" = 400'	
CHECKED BY:		PROJECT NO.:	
APPROVED BY:		DATE: 11/11/03	
PROJECT LOCATION:		PROJECT NO.:	
SHEET NO.:		DATE: 11/11/03	
DRAWN BY:		SCALE: 1" = 400'	
CHECKED BY:		PROJECT NO.:	
APPROVED BY:		DATE: 11/11/03	
PROJECT LOCATION:		PROJECT NO.:	
SHEET NO.:		DATE: 11/11/03	
DRAWN BY:		SCALE: 1" = 400'	
CHECKED BY:		PROJECT NO.:	
APPROVED BY:		DATE: 11/11/03	
PROJECT LOCATION:		PROJECT NO.:	
SHEET NO.:		DATE: 11/11/03	
DRAWN BY:		SCALE: 1" = 400'	
CHECKED BY:		PROJECT NO.:	
APPROVED BY:		DATE: 11/11/03	
PROJECT LOCATION:		PROJECT NO.:	
SHEET NO.:		DATE: 11/11/03	
DRAWN BY:		SCALE: 1" = 400'	
CHECKED BY:		PROJECT NO.:	
APPROVED BY:		DATE: 11/11/03	
PROJECT LOCATION:		PROJECT NO.:	
SHEET NO.:		DATE: 11/11/03	
DRAWN BY:		SCALE: 1" = 400'	
CHECKED BY:		PROJECT NO.:	
APPROVED BY:		DATE: 11/11/03	
PROJECT LOCATION:		PROJECT NO.:	
SHEET NO.:		DATE: 11/11/03	
DRAWN BY:		SCALE: 1" = 400'	
CHECKED BY:		PROJECT NO.:	
APPROVED BY:		DATE: 11/11/03	
PROJECT LOCATION:		PROJECT NO.:	
SHEET NO.:		DATE: 11/11/03	
DRAWN BY:		SCALE: 1" = 400'	
CHECKED BY:		PROJECT NO.:	
APPROVED BY:		DATE: 11/11/03	
PROJECT LOCATION:		PROJECT NO.:	
SHEET NO.:		DATE: 11/11/03	
DRAWN BY:		SCALE: 1" = 400'	
CHECKED BY:		PROJECT NO.:	
APPROVED BY:		DATE: 11/11/03	
PROJECT LOCATION:		PROJECT NO.:	
SHEET NO.:		DATE: 11/11/03	
DRAWN BY:		SCALE: 1" = 400'	
CHECKED BY:		PROJECT NO.:	
APPROVED BY:		DATE: 11/11/03	
PROJECT LOCATION:		PROJECT NO.:	
SHEET NO.:		DATE: 11/11/03	
DRAWN BY:		SCALE: 1" = 400'	
CHECKED BY:		PROJECT NO.:	
APPROVED BY:		DATE: 11/11/03	
PROJECT LOCATION:		PROJECT NO.:	
SHEET NO.:		DATE: 11/11/03	
DRAWN BY:		SCALE: 1" = 400'	
CHECKED BY:		PROJECT NO.:	
APPROVED BY:		DATE: 11/11/03	
PROJECT LOCATION:		PROJECT NO.:	
SHEET NO.:		DATE: 11/11/03	
DRAWN BY:		SCALE: 1" = 400'	
CHECKED BY:		PROJECT NO.:	
APPROVED BY:		DATE: 11/11/03	
PROJECT LOCATION:		PROJECT NO.:	
SHEET NO.:		DATE: 11/11/03	
DRAWN BY:		SCALE: 1" = 400'	
CHECKED BY:		PROJECT NO.:	
APPROVED BY:		DATE: 11/11/03	
PROJECT LOCATION:		PROJECT NO.:	
SHEET NO.:		DATE: 11/11/03	
DRAWN BY:		SCALE: 1" = 400'	
CHECKED BY:		PROJECT NO.:	
APPROVED BY:		DATE: 11/11/03	
PROJECT LOCATION:		PROJECT NO.:	
SHEET NO.:		DATE: 11/11/03	
DRAWN BY:		SCALE: 1" = 400'	
CHECKED BY:		PROJECT NO.:	
APPROVED BY:		DATE: 11/11/03	
PROJECT LOCATION:		PROJECT NO.:	
SHEET NO.:		DATE: 11/11/03	
DRAWN BY:		SCALE: 1" = 400'	
CHECKED BY:		PROJECT NO.:	
APPROVED BY:		DATE: 11/11/03	
PROJECT LOCATION:		PROJECT NO.:	
SHEET NO.:		DATE: 11/11/03	
DRAWN BY:		SCALE: 1" = 400'	
CHECKED BY:		PROJECT NO.:	
APPROVED BY:		DATE: 11/11/03	
PROJECT LOCATION:		PROJECT NO.:	
SHEET NO.:		DATE: 11/11/03	
DRAWN BY:		SCALE: 1" = 400'	
CHECKED BY:		PROJECT NO.:	
APPROVED BY:		DATE: 11/11/03	
PROJECT LOCATION:		PROJECT NO.:	
SHEET NO.:		DATE: 11/11/03	
DRAWN BY:		SCALE: 1" = 400'	
CHECKED BY:		PROJECT NO.:	
APPROVED BY:		DATE: 11/11/03	
PROJECT LOCATION:		PROJECT NO.:	
SHEET NO.:		DATE: 11/11/03	
DRAWN BY:		SCALE: 1" = 400'	
CHECKED BY:		PROJECT NO.:	
APPROVED BY:		DATE: 11/11/03	
PROJECT LOCATION:		PROJECT NO.:	
SHEET NO.:		DATE: 11/11/03	
DRAWN BY:		SCALE: 1" = 400'	
CHECKED BY:		PROJECT NO.:	
APPROVED BY:		DATE: 11/11/03	
PROJECT LOCATION:		PROJECT NO.:	
SHEET NO.:		DATE: 11/11/03	
DRAWN BY:		SCALE: 1" = 400'	
CHECKED BY:		PROJECT NO.:	
APPROVED BY:		DATE: 11/11/03	
PROJECT LOCATION:		PROJECT NO.:	
SHEET NO.:		DATE: 11/11/03	
DRAWN BY:		SCALE: 1" = 400'	
CHECKED BY:		PROJECT NO.:	
APPROVED BY:		DATE: 11/11/03	
PROJECT LOCATION:		PROJECT NO.:	
SHEET NO.:		DATE: 11/11/03	
DRAWN BY:		SCALE: 1" = 400'	
CHECKED BY:		PROJECT NO.:	
APPROVED BY:		DATE: 11/11/03	
PROJECT LOCATION:		PROJECT NO.:	
SHEET NO.:		DATE: 11/11/03	
DRAWN BY:		SCALE: 1" = 400'	
CHECKED BY:		PROJECT NO.:	
APPROVED BY:		DATE: 11/11/03	
PROJECT LOCATION:		PROJECT NO.:	
SHEET NO.:		DATE: 11/11/03	
DRAWN BY:		SCALE: 1" = 400'	
CHECKED BY:		PROJECT NO.:	
APPROVED BY:		DATE: 11/11/03	
PROJECT LOCATION:		PROJECT NO.:	
SHEET NO.:		DATE: 11/11/03	
DRAWN BY:		SCALE: 1" = 400'	
CHECKED BY:		PROJECT NO.:	

INDIAN SPRING

Attachment F



Map compiled on May 20, 2005 at 12:10 PM | Site located on base sheet no - 218NW02

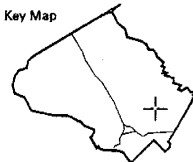
NOTICE

The planimetric, property, and topographic information shown on this map is based on copyrighted Map Products from the Montgomery County Department of Park and Planning of the Maryland-National Capital Park and Planning Commission, and may not be copied or reproduced without written permission from M-NCPPC.

Property lines are compiled by adjusting the property lines to topography created from aerial photography and should not be interpreted as actual field surveys. Planimetric features were compiled from 1:14400 scale aerial photography using stereo photogrammetric methods.

This map is created from a variety of data sources, and may not reflect the most current conditions in any one location and may not be completely accurate or up to date. All map features are approximately within five feet of their true location. This map may not be the same as a map of the same area plotted at an earlier time as the data is continuously updated. Use of this map, other than for general planning purposes is not recommended. - Copyright 1998

Key Map



N



Research & Technology Center



1 inch = 1200 feet
1 : 14400

M-NCPPC

MONTGOMERY COUNTY DEPARTMENT OF PARK AND PLANNING
THE MARYLAND-NATIONAL CAPITAL PARK AND PLANNING COMMISSION

8787 Georgia Avenue - Silver Spring, Maryland 20910-3760

INDIAN SPRING

Attachment "G"



Map compiled on May 20, 2005 at 11:56 AM | Site located on base sheet no - 218NW02

NOTICE

The planimetric, property, and topographic information shown on this map is based on copyrighted Map Products from the Montgomery County Department of Park and Planning of the Maryland -National Capital Park and Planning Commission, and may not be copied or reproduced without written permission from M-NCPPC.

Property lines are compiled by adjusting the property lines to topography created from aerial photography and should not be interpreted as actual field surveys. Planimetric features were compiled from 1:14400 scale aerial photography using stereo photogrammetric methods.

This map is created from a variety of data sources, and may not reflect the most current conditions in any one location and may not be completely accurate or up to date. All map features are approximately within five feet of their true location. This map may not be the same as a map of the same area plotted at an earlier time as the data is continuously updated. Use of this map, other than for general planning purposes is not recommended. - Copyright 1998

Key Map



N



Research & Technology Center
0 1200

1 inch = 1200 feet
1 : 14400