



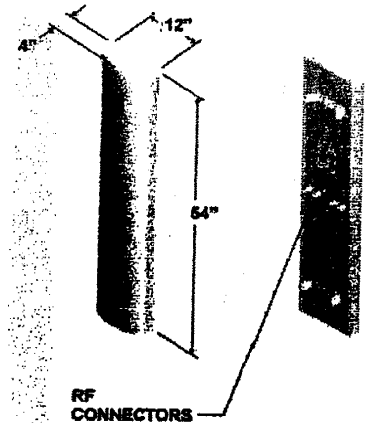
## DR65-18-XXDPL2Q

Dual DualPol<sup>®</sup> Polarization  
1850 MHz - 1990 MHz

OptiRange<sup>™</sup>  
Suppressor<sup>™</sup>

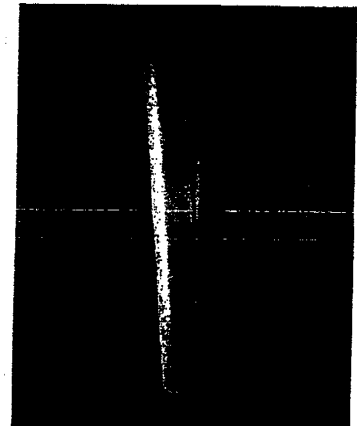
### Electrical Specifications

Azimuth Beamwidth (-3 dB)	65°
Elevation Beamwidth (-3 dB)	6°
Elevation Sidelobes (Upper)	≥ 18 dB
Gain	17.3 dBi (15.2 dBd)
Polarization	Quad Linear, Slant (± 45°)
Port-to-Port Isolation	≥ 30 dB
Front-to-Back Ratio	≥ 35 dB
Electrical Downtilt Options	0°, 2°, 4°, 6°
VSWR	1.35:1 Max
Connectors	4; 7-16 DIN (female)
Power Handling	250 Watts CW
Passive Intermodulation	≤ -150 dBc [2 x 20W (+ 43 dBm)]
Lightning Protection	Chassis Ground



### Mechanical Specifications

Dimensions (L x W x D)	54 in x 12 in x 4 in (137.2 cm x 30.5 cm x 10.2 cm)
Rated Wind Velocity	130 mph (209 km/hr)
Equivalent Flat Plate Area	4.5ft <sup>2</sup> (.42 m <sup>2</sup> )
Front Wind Load @ 100 mph (161 kph)	133 lbs (589 N)
Side Wind Load @ 100 mph (161 kph)	44 lbs (196 N)
Weight (Without Mounting Kit)	20.5 lbs (9.4 kg)

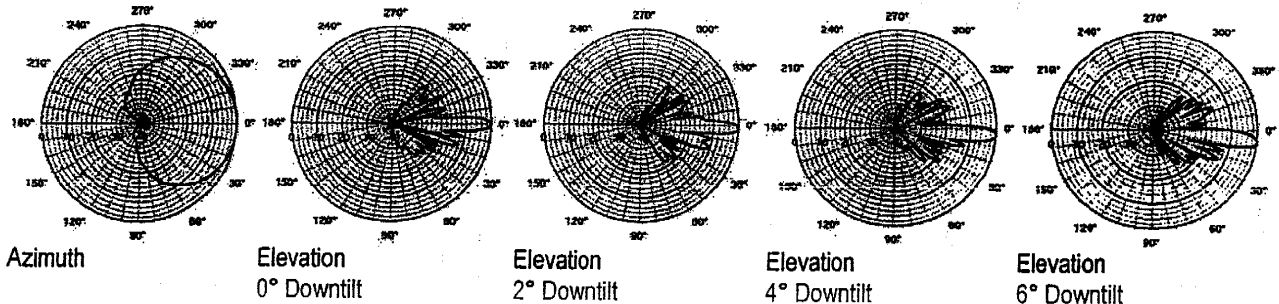


### Mounting Options

MTG-P00-10, MTG-S02-10, MTG-DXX-20\*, MTG-CXX-10\*, MTG-C02-10, MTG-TXX-10\*

Note: \*Model number shown represents a series of products. See Mounting Options section for specific model number.

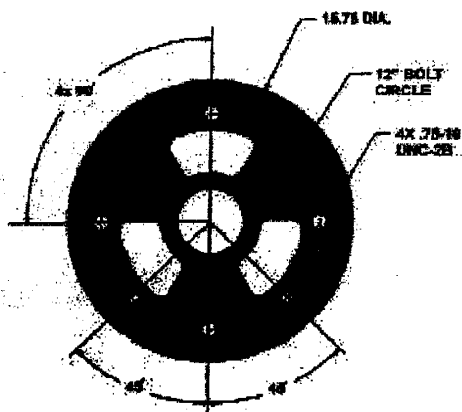
### Patterns



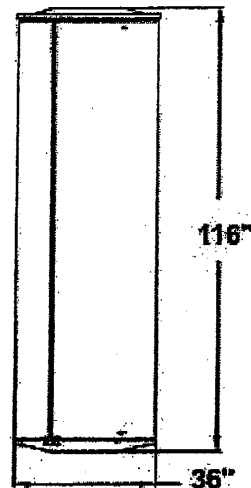
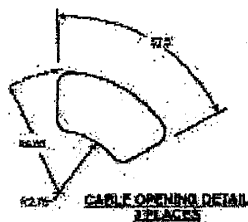
EMS' antennas are protected by one or more of the following U.S. patents: 5,844,529; 6,067,053; 6,462,710; 6,392,600; 6,069,590; 5,966,102; 5,757,246. EMS' antenna designs may also be covered by pending U.S. patent applications and by pending & awarded international patents.

Revised 12/04/03

# OUTLINE DIMENSIONS



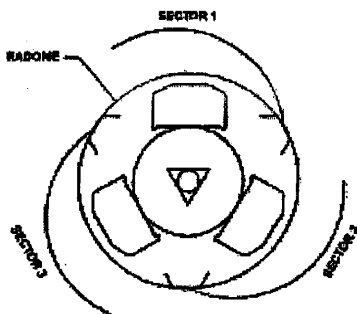
**Mounting Interface**



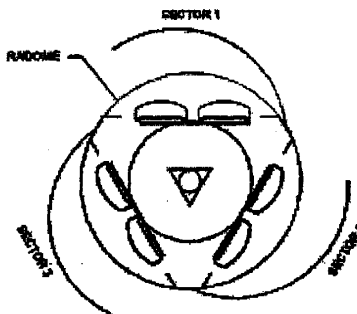
**Side View**

# Sector Configuration

## TOP VIEWS

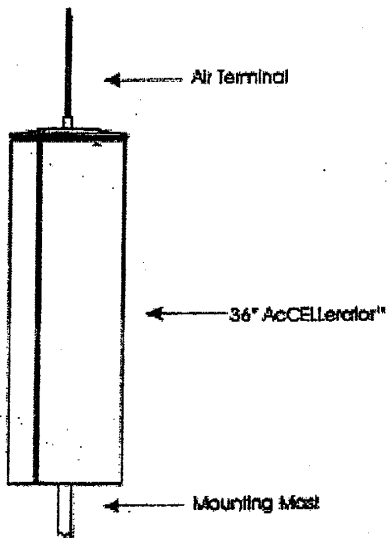


**CELL AcCELLerator™**



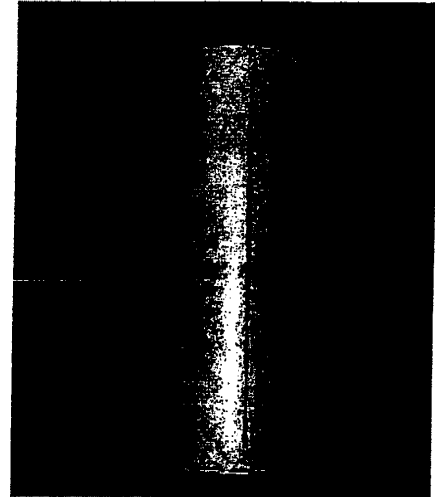
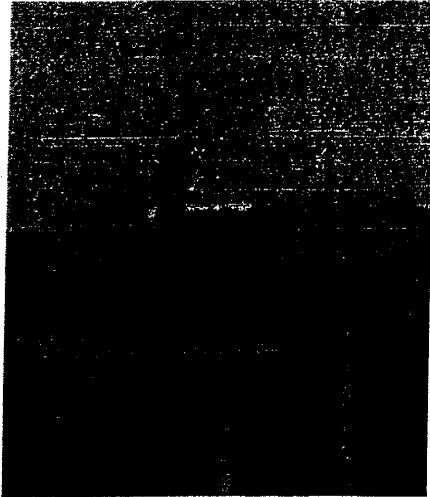
**PCS AcCELLerator™**

# Options



# 36" AcCELLerator™ Product Page

To get a quote for this item select the Configure button.



## SPECIFICATIONS

### Electrical

Sector to Sector Isolation	>40 dB
Jumper Cable Connectors	>7- 16 DIN (female)
Lightning Protection	Chassis Ground (Optional air terminal kit)

For all other electrical performance specifications including radiation pattern data, please refer to the individual antenna data sheet.

### Mechanical

Dimensions: Height	116 inch (183 cm)
Diameter	16 inch (41 cm)
Rated Wind Velocity	100 mph (161 kph)
Side Wind Load @ 100 mph	160 lbs (710 N)
Weight	425 lbs (193 kg)
Mounting Hardware	4 ea. 3/4 - 10 Bolts on 12 inch bolt circle

## ACCESSORIES

Model Number	Description	Comments
LPK-1	Air Terminal	Lightning protection kit including 24 in. Air terminal and 20 ft. #4 AWG copper pigtail.

## MOUNTING OPTIONS

Model Number	Description	Comments
MTG-A00-02	Mounting Plate	16 inch dia. Steel plate with mating hole patterns for AcCELLerator™ series antennas. Use to make your own custom mount or monopole adapter.
MTG-A10-02	Mounting Mast	10 ft. x 4.5 in. O.D. Galvanized steel pipe with welded antenna mounting plate.
MTG-A20-02	Mounting Mast & Wall Mount Kit	10 ft. Mounting mast plus brackets for wall attachment.

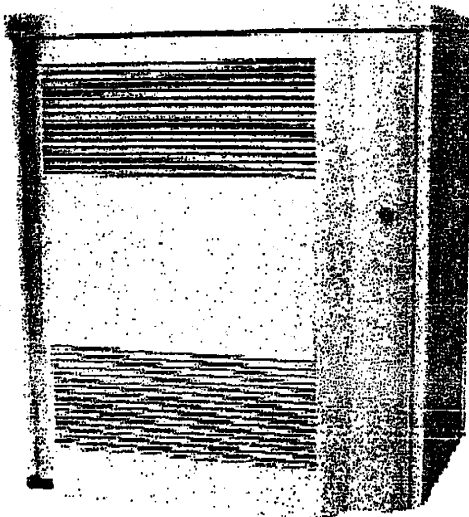
## The RBS 2106 cabinet

- Outdoor specified.
- Supports up to six double transceiver units (12 TRX's) per cabinet.
- One cabinet can be configured as a one, two or three sector cell configuration.
- The cabinet fulfils seismic requirements

*Figure 7. RBS 2106 cabinet.*

All units in the cabinet are easily accessible from the front of the cabinet. There are no requirements on access to the cabinet from the sides or the back, which implies that the cabinets can be mounted side by side with the back to a wall.

Cable entries for antenna feeders, transmission cables, and mains power are concentrated at the bottom of the cabinet.



*Figure 7. RBS 2106 cabinet.*

### Product Description 12 (33)

© Ericsson. Commercial in confidence Rev A 2001-02-27 SRNX-00:146

## 3 Technical Specification

### 3.1 Mechanical Dimensions

*Table 1. Mechanical Dimensions.*

**Quantity Value (mm)**

Height 1614

Width 1300

Depth (inclusive door of 230 mm) 940

Footprint (Depth) 710

### 3.2 Weight

*Table 2. Weight.*

**Unit Weight (kg)**

Fully equipped cabinet incl. batteries.

590

Fully equipped cabinet excl. batteries.

550

### **3.3 Power Requirements**

*Table 3. Power Requirements.*

#### **Quantity Value**

AC input voltage: 200–250 VAC

Backup capacity at maximum load  
(depending on number of batteries)

15–30 min

External fuse:

– AC input 1x50A or 3x32 A

### **3.4 Power Consumption**

The maximum operating power consumption for RBS 2106 is 6.6 kW with air condition valid for 200-250 VAC.

These figures correspond to operation during peak load in extreme conditions. The power consumption during normal operation is however also configuration dependent.