



THE MARYLAND-NATIONAL CAPITAL PARK AND PLANNING COMMISSION

MCPB
Item # 1
6-2-05

May 27, 2005

MEMORANDUM

TO: Montgomery County Planning Board
VIA: Richard C. Hawthorne, Chief *for RH*
Transportation Planning
FROM: Kathy Woodworth for the Park and Planning Department, 301-495-4525
Transportation Planning *KW*
SUBJECT: Highway Reservation, 2005

This item is the formal action needed by the Planning Board to continue reservation of land for public use. Attached is a copy of the plat.

CONTINUATION OF RESERVATION

1. Pulte Home Corporation – 1.7211 acres
Intercounty Connector

STAFF RECOMMENDATION

Approval of Resolution to continue in reservation for three years.

KCW:rlb
Attachment

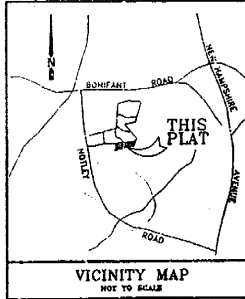
mno to Brd reservations 05.doc

CERTIFICATE

I HEREBY CERTIFY THAT PURSUANT TO THE PROVISIONS OF ARTICLE 28 OF THE ANNOTATED CODE OF MARYLAND AND THE REGULATIONS FOR THE SUBDIVISION OF LAND FOR THE MARYLAND-WASHINGTON REGIONAL DISTRICT IN MONTGOMERY COUNTY, ADOPTED BY THE COUNTY COUNCIL FOR MONTGOMERY COUNTY, MARYLAND, OCTOBER 17, 1961, AND BY VIRTUE OF ITS AUTHORITY TO ADMINISTER SAID REGULATIONS, THE MONTGOMERY COUNTY PLANNING BOARD BY RESOLUTION ADOPTED June 29, 1995, HAS DECLARED THE 1.7211 ACRES OF LAND AS SHOWN HEREON AS PARCEL D, BLOCK I, TO BE A RESERVATION OF LAND FOR PUBLIC USE AS DEEMED NECESSARY FOR HIGHWAY PURPOSES FOR THE PROPOSED "INTER COUNTY CONNECTOR", SAID RESERVATION TO CONTINUE IN FULL FORCE AND EFFECT FOR THREE YEARS.

DATE: 7/19/95

Judy Meyer Johnson
EXECUTIVE DIRECTOR

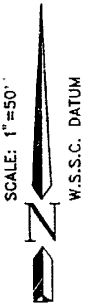
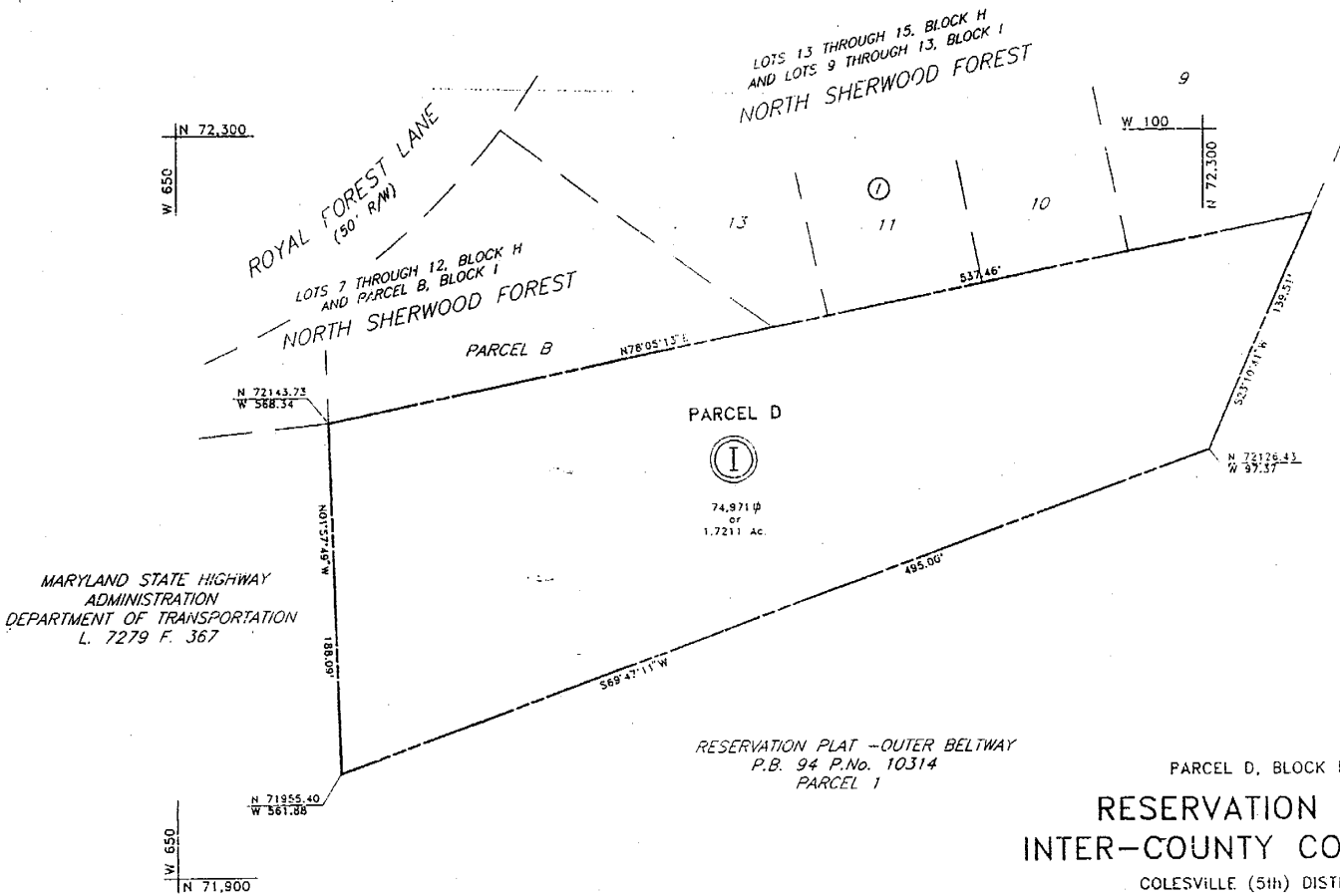


SURVEYOR'S CERTIFICATE

I HEREBY CERTIFY THAT THE INFORMATION SHOWN HEREON IS CORRECT; THAT IT IS PART OF THE LAND ACQUIRED BY PULTE HOME CORPORATION, A MICHIGAN CORPORATION FOR Q/S LIMITED PARTNERSHIP, A MARYLAND LIMITED PARTNERSHIP BY DEED DATED OCTOBER 17, 1994 AND RECORDED AMONG THE LAND RECORDS OF MONTGOMERY COUNTY, MARYLAND IN LIBER 13017 AT FOLIO 513.

DATE: 2-14-95

R. Collier
RONALD L. COLLIER
REGISTERED PROPERTY LINE SURVEYOR
MARYLAND NO. 307



PARCEL D, BLOCK I
RESERVATION PLAT
INTER-COUNTY CONNECTOR
COLESVILLE (5th) DISTRICT
MONTGOMERY COUNTY, MARYLAND
SCALE: 1"=50" FEBRUARY, 1995

THE MARYLAND NATIONAL CAPITAL PARK AND PLANNING COMMISSION
MONTGOMERY COUNTY PLANNING BOARD
APPROVED: July 6 1995
Chairman CHAIRMAN
Secretary SECRETARY - TREASURER
MNCP&PC Record File No. 596-59

RECORDED: 2-22-95
PLAT BOOK: 197
PLAT NO.: 19807

1 PARCEL



Charlie P. Johnson & Associates, Inc.
PLANNING ENGINEERS LANDSCAPE ARCHITECTS SURVEYORS
1761 EITON ROAD SILVER SPRING, MARYLAND 20903
(301) 481-7000 FALLS CHURCH, VA

SW 157
23-042-15
596-59