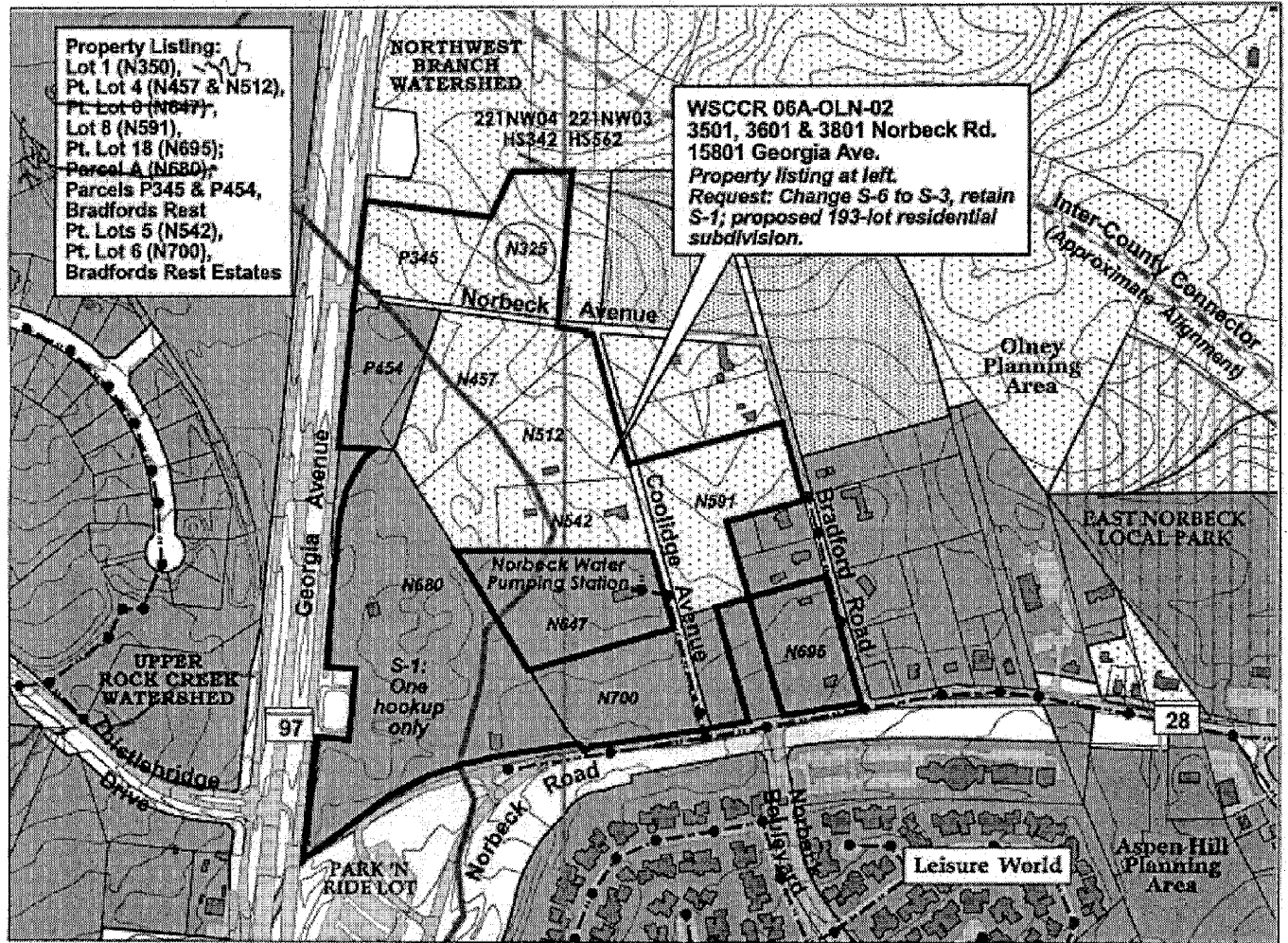
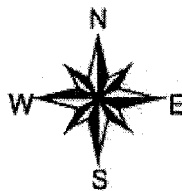


Sewer Service Area Categories Map: WSSCR 06A-OLN-02 (The Georgia Group LP & Mid-Atlantic Golf/Norbeck LLC)



MAP LEGEND

- Property
- WSSC Map Grid
- Sewer Manholes
- Sewer Mains**
 - Small-Diameter, Low-Pressure Mains
 - 6" - to 8"-Diameter Gravity Mains
 - 10" - to 14"-Diameter Gravity Mains
 - 15" - to 42"-Diameter (CIP) Trunk Mains
 - 48" - or Larger-Diameter (CIP) Trunk Mains
- Buildings
- Roads
- Topography (C.I. = 5 Feet)
- Watersheds
- Streams
- Ponds - Lakes
- M-NCPPC Planning Areas
- County - State - Federal Parks

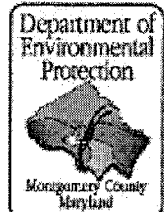


Sewer Service Area Categories (6/03)

- S-1
- S-3
- S-4
- S-5
- S-6

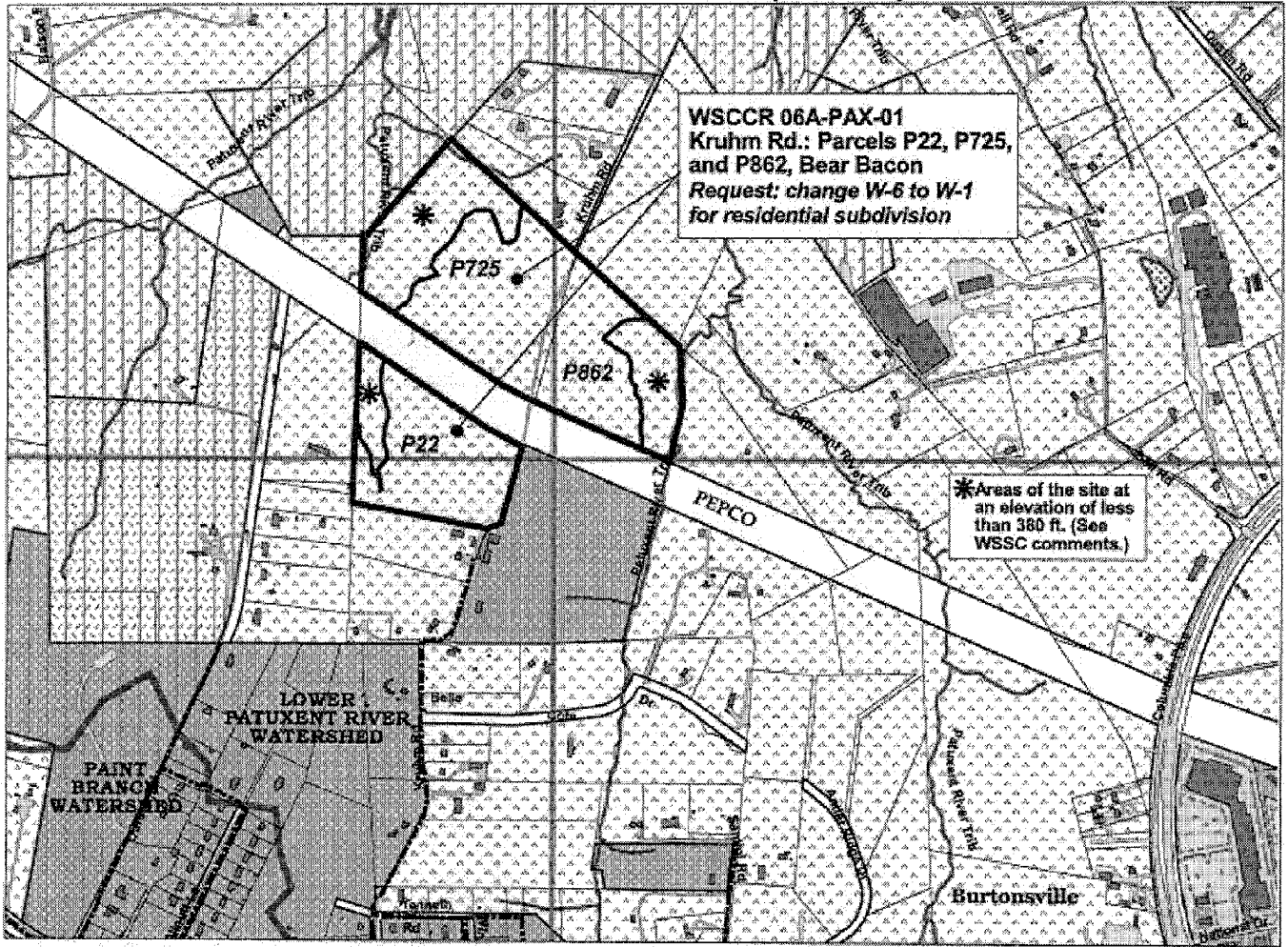
June 2003 Update
Service Area Categories Map

Montgomery County, Maryland
Comprehensive Water Supply
and Sewerage Systems Plan



Water & Wastewater Policy Group
 2/1/06 - GIS Project File:
 o:\wwteam\ccrs-pastolney\2006ccrs\06a-oln-02=norbeck-crossing=ws.apr

Water Service Area Categories Map WSSCR 06A-PAX-01 (Kruhm)

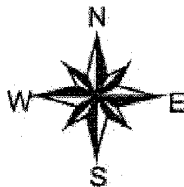


Patuxent Watershed Conservation Planning Area:



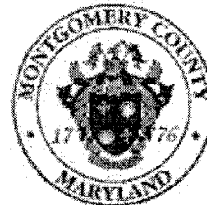
MAP LEGEND

- Text Streets
- Property
- WSSC Map Grid
- Water
- Watersheds
- Bldg Buildings
- Road03 Roads
- Priv_rd Priv. rd
- Parking
- Parking
- Streams
- Ponds - Lakes
- County - State - Federal Parks
- Water Service Area Categories
 - W-1
 - W-3
 - W-4
 - W-5
 - W-6
 - W-6 Multi-Use System



June 2003 Update
Service Area Categories Map

Montgomery County, Maryland
Comprehensive Water Supply
and Sewerage Systems Plan



Water & Wastewater Policy Group
02/13/06 - GIS Project File:
o:\wwteam\ccrs-pas\Patuxent-Lower\
2006ccrs\06A-PAX-01=Kruhm=W.apr